

# EXERCÍCIOS

---

4 e 5

## Modelação Geométrica e Generativa

---



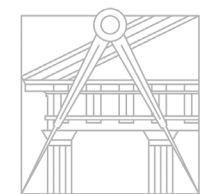
al003913



PAULO S. FERREIRA

U LISBOA

UNIVERSIDADE  
DE LISBOA



FACULDADE DE ARQUITETURA  
UNIVERSIDADE DE LISBOA

MGeG

Mestrado Integrado em Arquitectura  
Ano Lectivo 2021-2022 1º Semestre  
Docente - Nuno Alão 4º Ano

# ÍNDICE:

## EX. 4.0 - TERRENO NA ROMEIRA

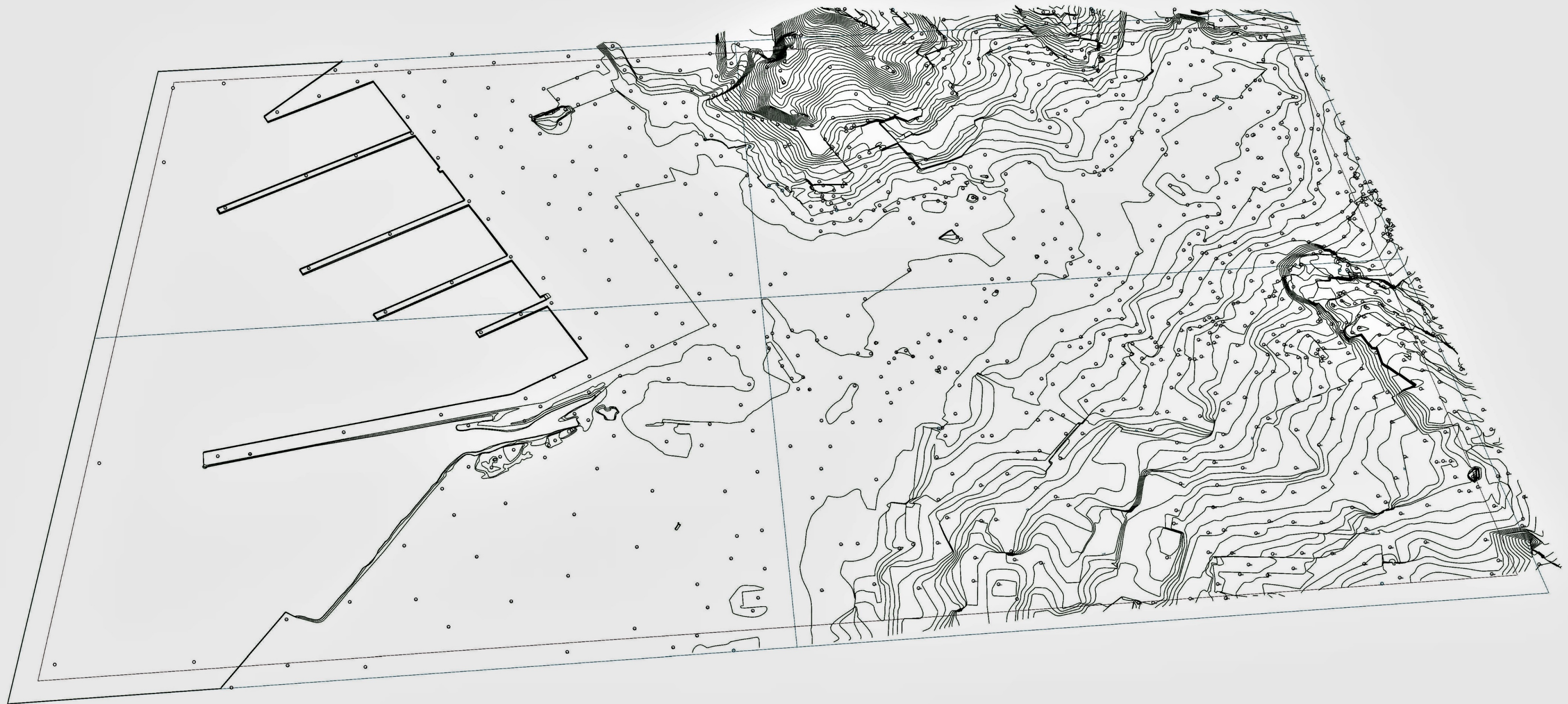
## Rhino files

<u>TERRENO CAD</u> .....	04
<u>MESH “DELAUNAY”</u> .....	05
<u>MESH “DELAUNAY” RENDER</u> .....	06
<u>PROJEÇÃO COM GRELHA 5m x 5m</u> .....	07
<u>PROJEÇÃO COM GRELHA 1m x 1m</u> .....	08
<u>PROJEÇÃO COM GRELHA 3m x 3m + “GRADIENT”</u> .....	09
<u>PROJEÇÃO 3m x 3m + “GRADIENT” + CURVAS</u> .....	10

## EX. 5.0 - CORAIS

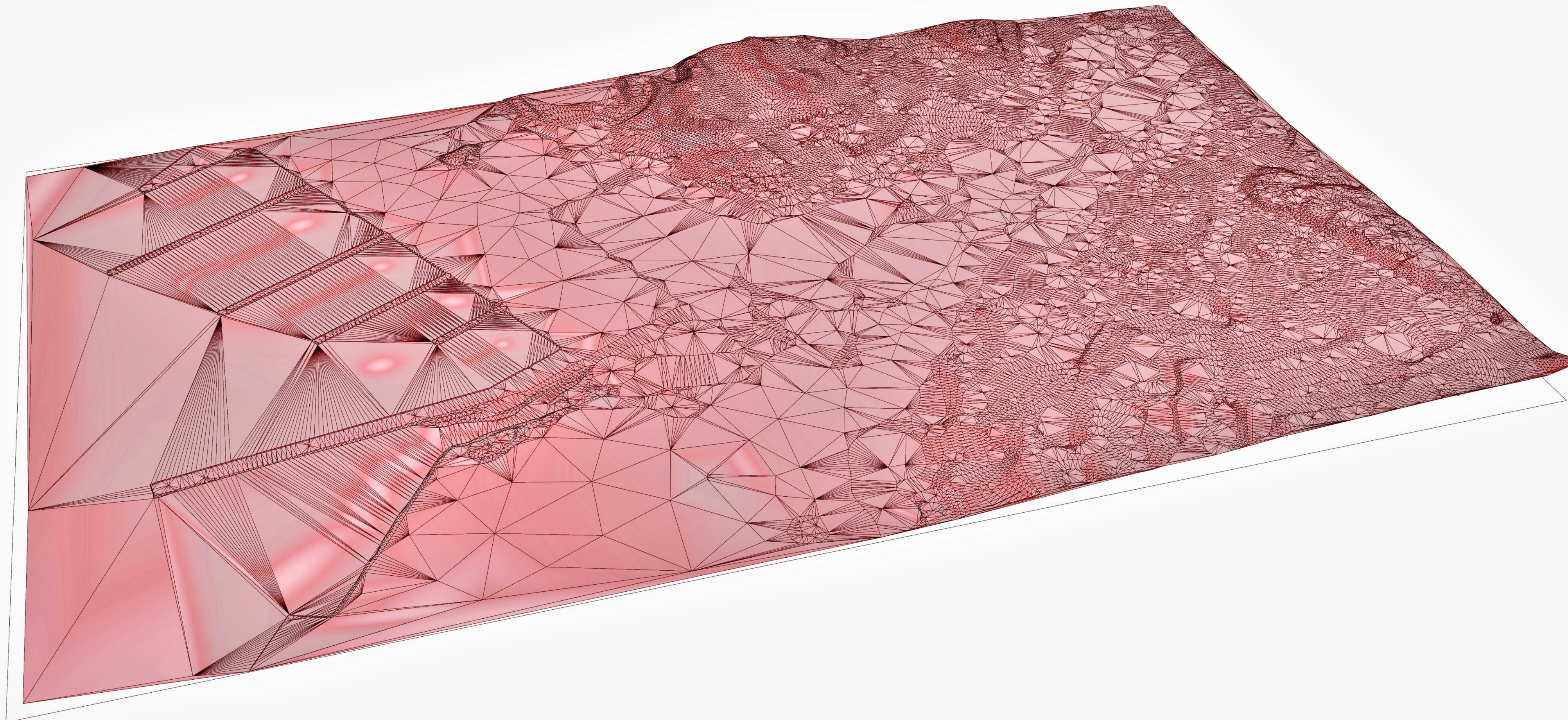
## Rhino files

<u>CORAIS</u> .....	11
<u>CORAIS GEOMETRIA</u> .....	12
<u>CORAL A</u> .....	14
<u>CORAL B</u> .....	15
<u>CORAL C</u> .....	16
<u>PAINÉIS + CORAIS</u> .....	14

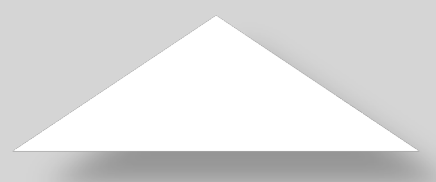


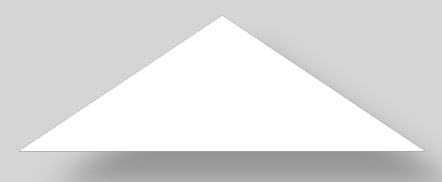
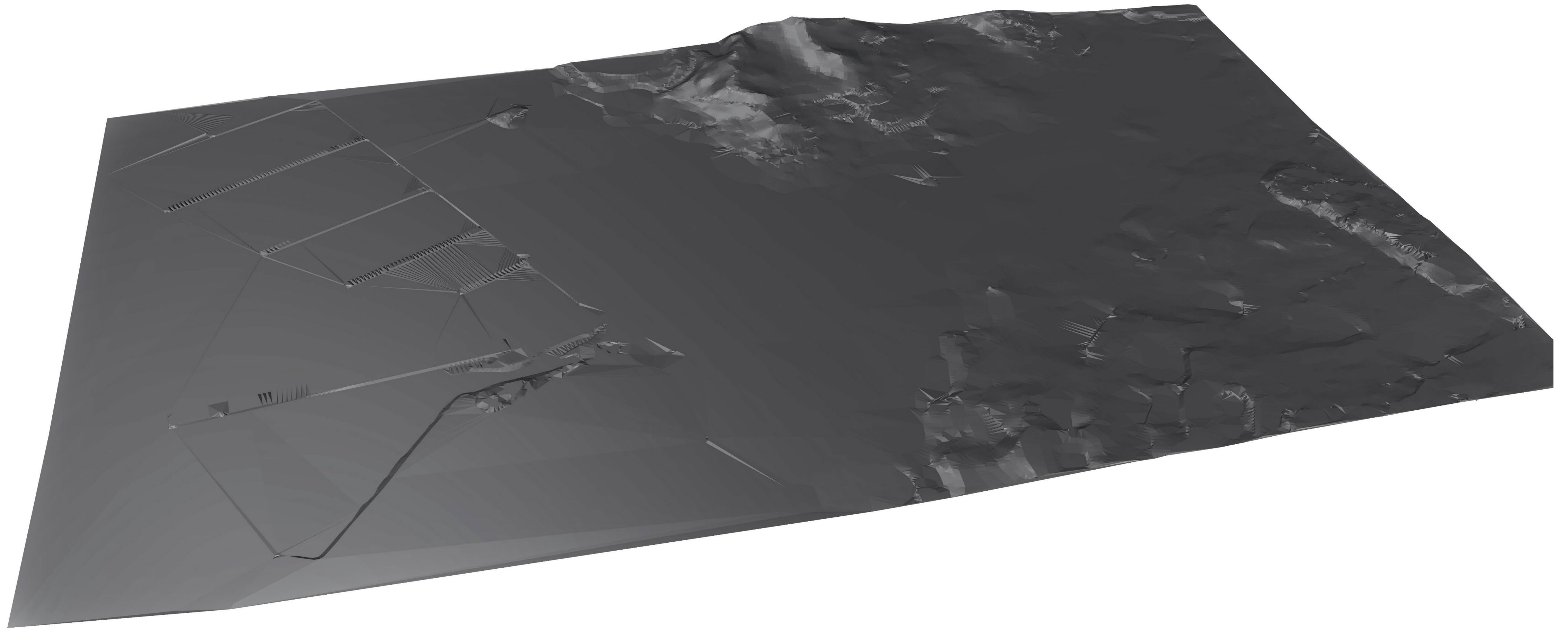
Exercício. 4.0 – Terreno CAD



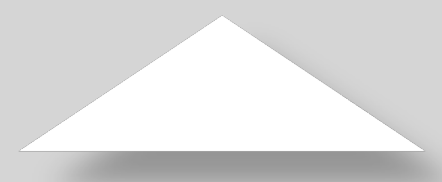
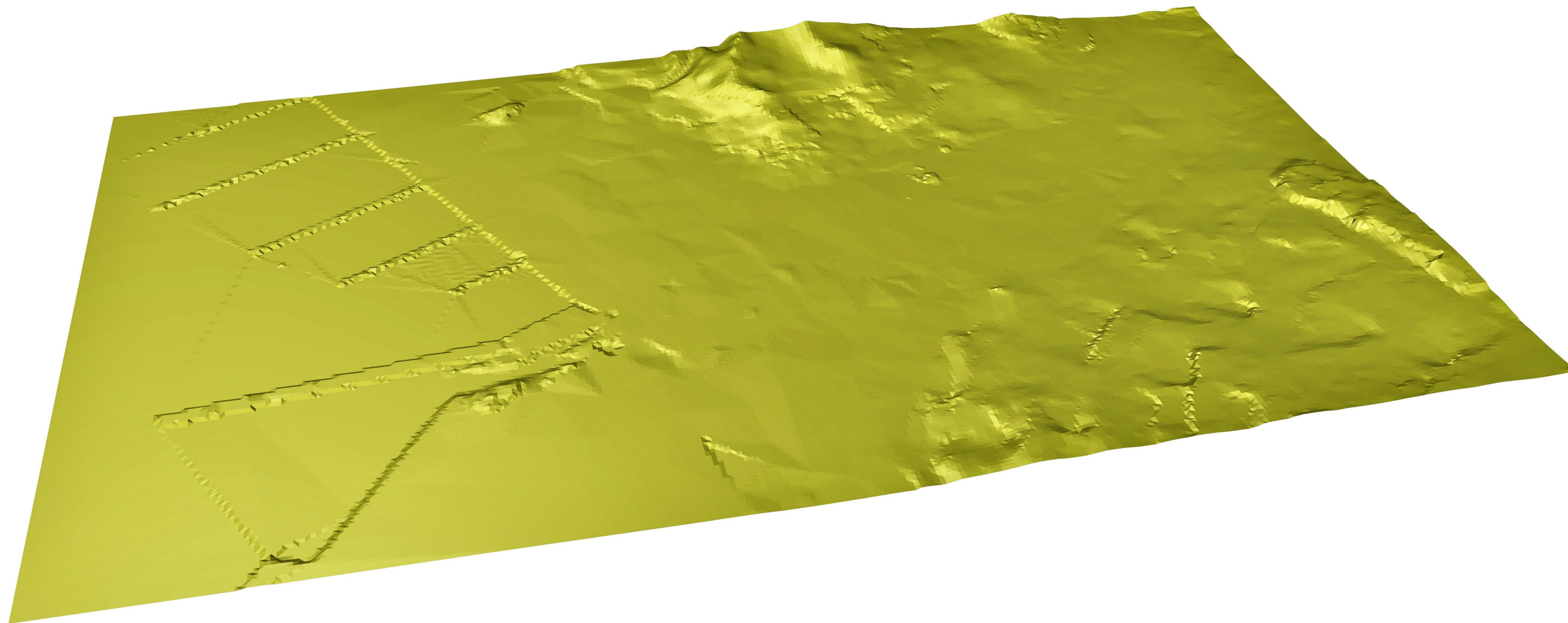


Exercício. 4.0 – Mesh Delaunay

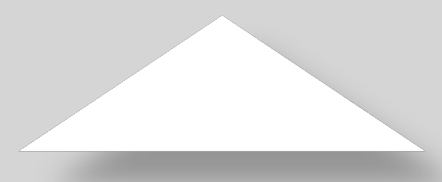
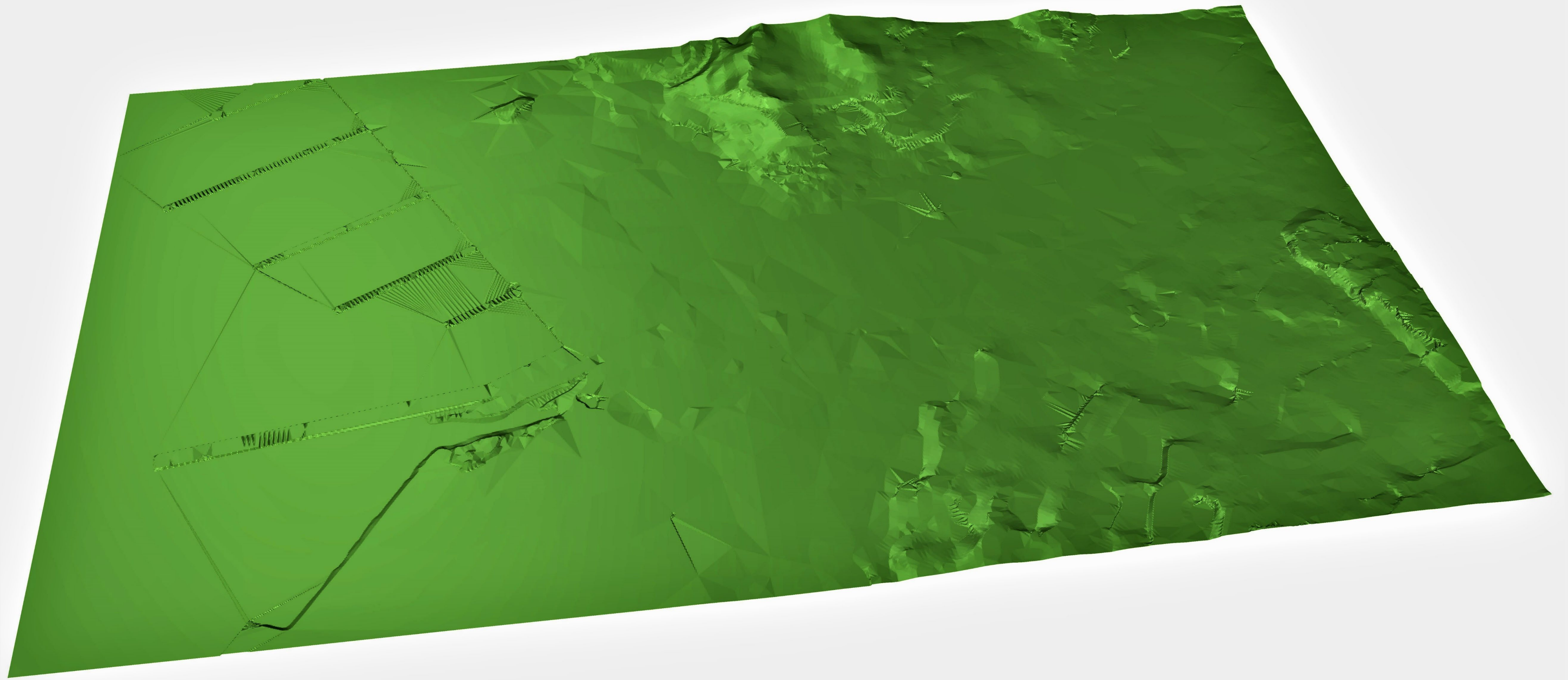




Exercício. 4.0 – Mesh Delaunay

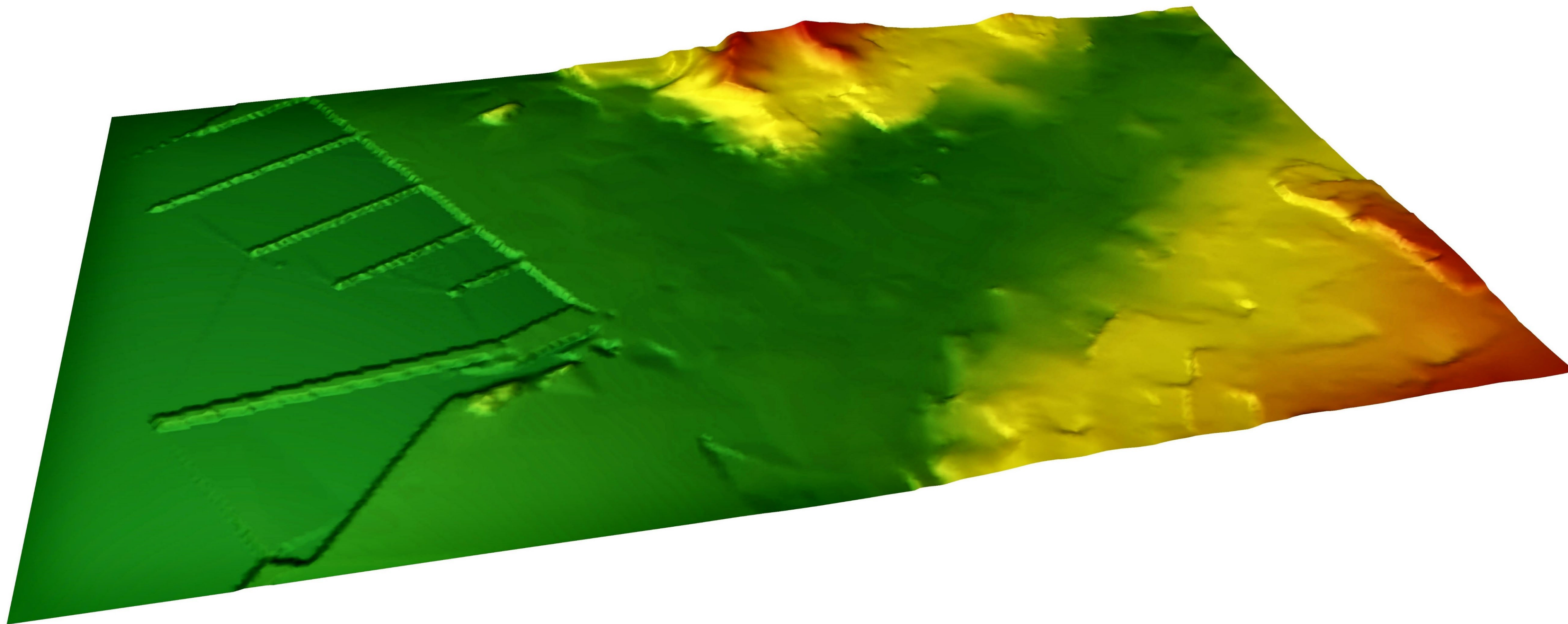


Exercício. 4.0 - Projeção 5 x 5m

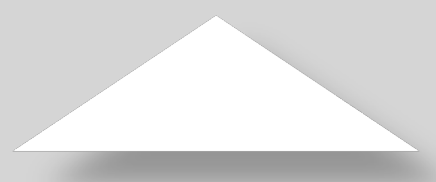


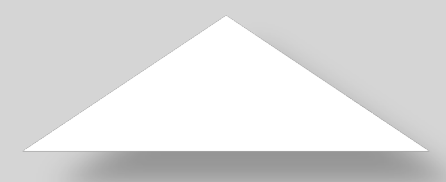
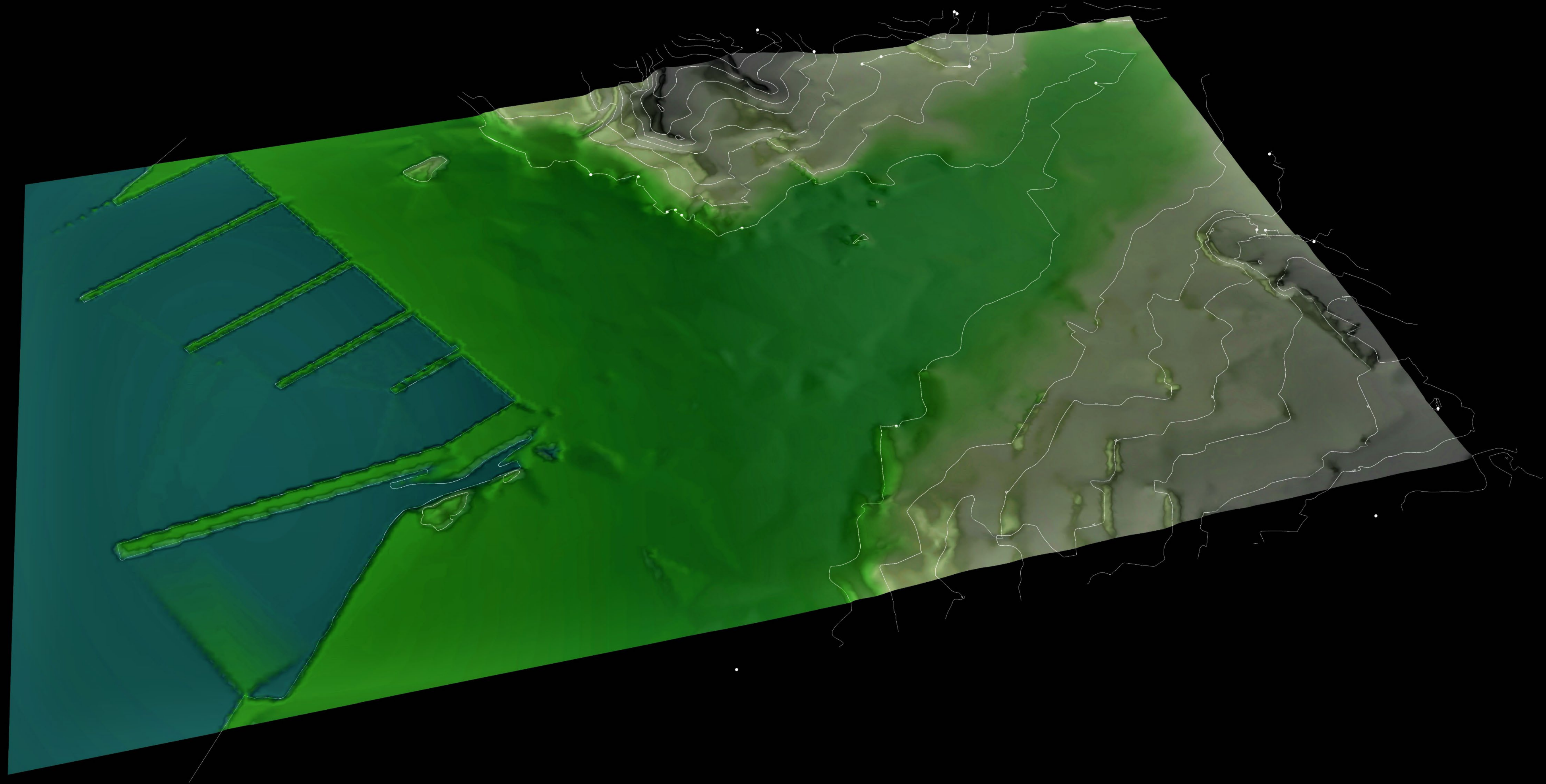
Exercício. 4.0 - Projeção 1 x 1m



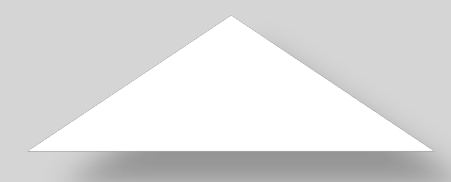


Exercício. 4.0 – Projeção 3x3m + “Gradient”

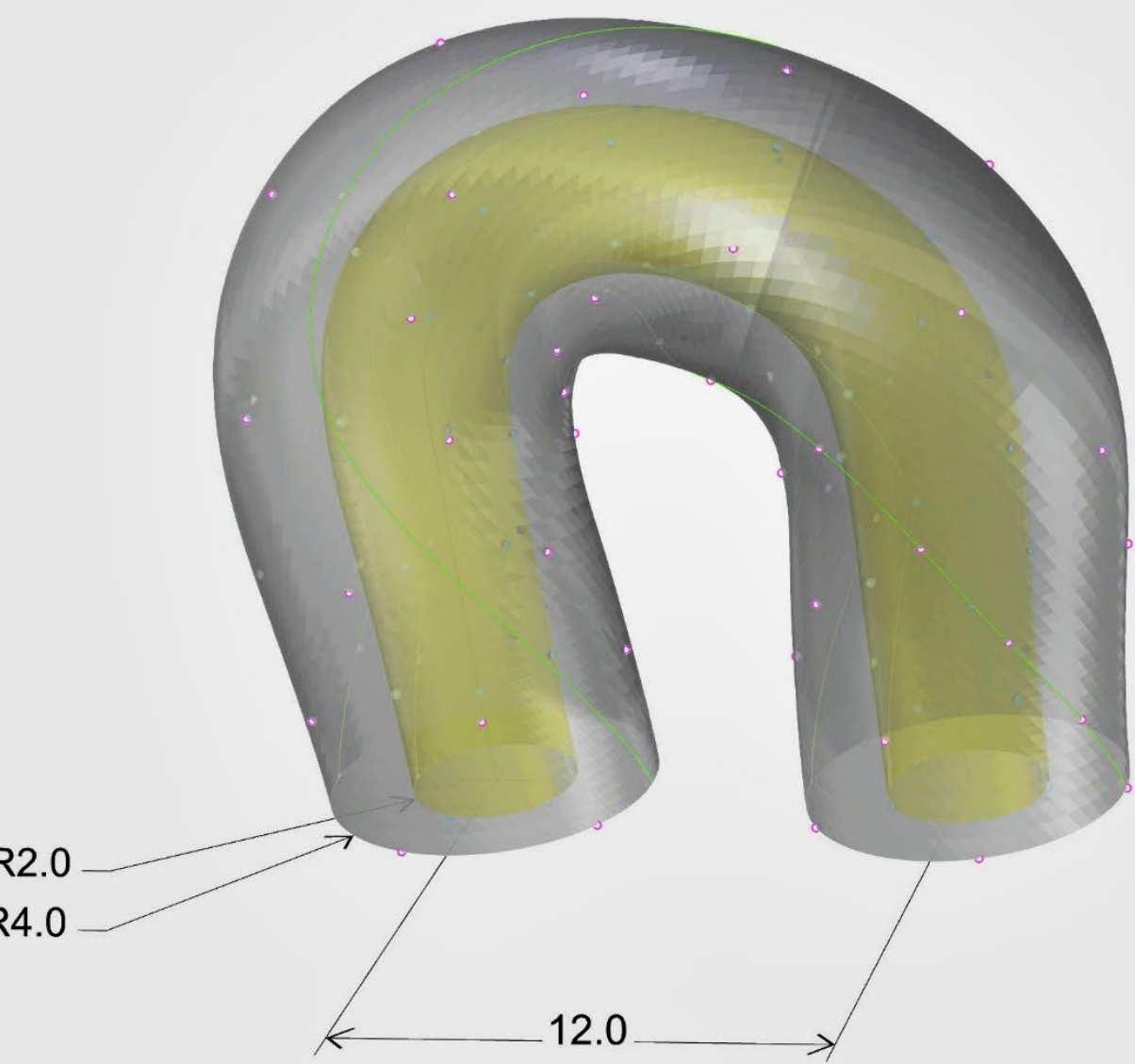




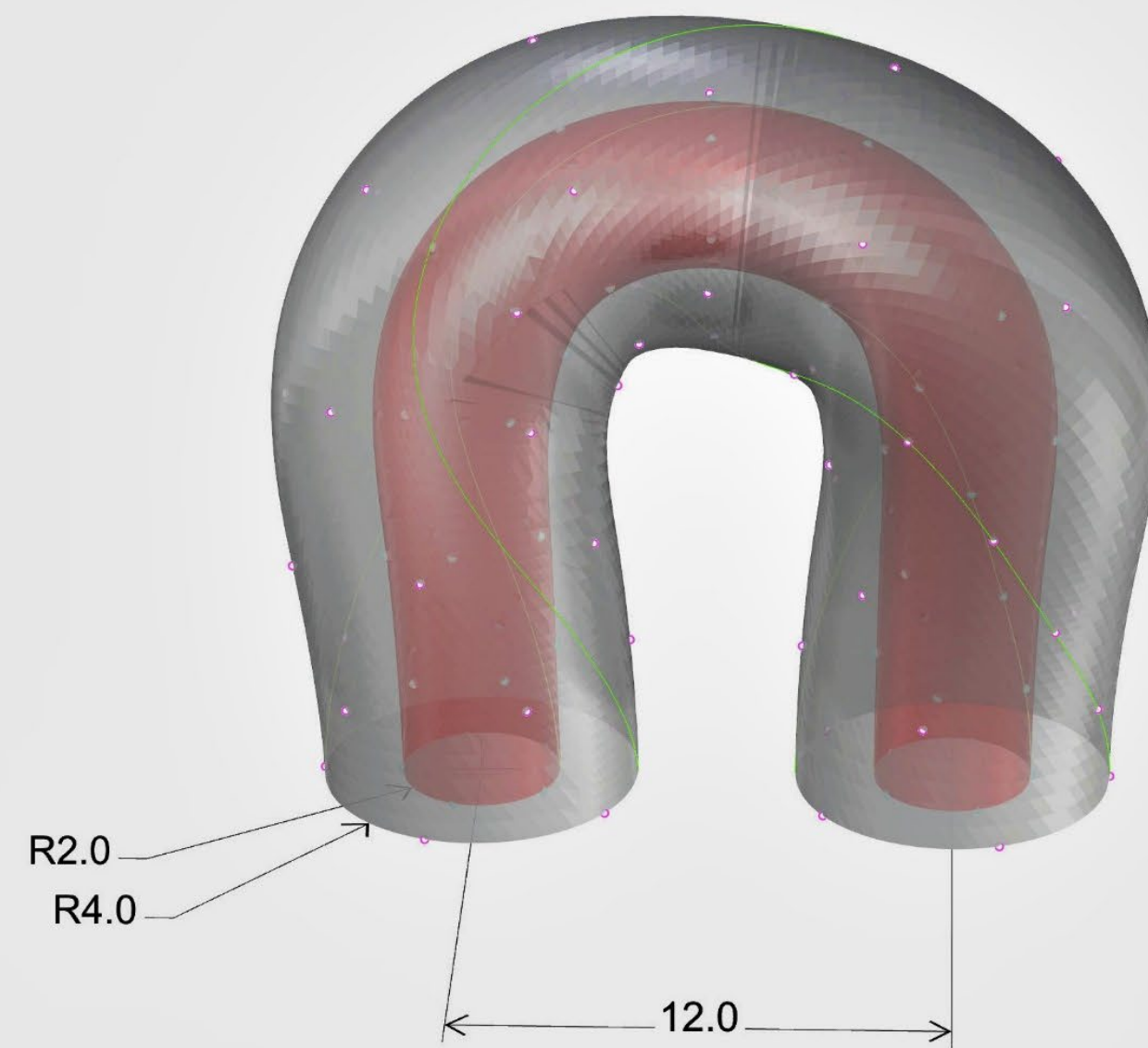
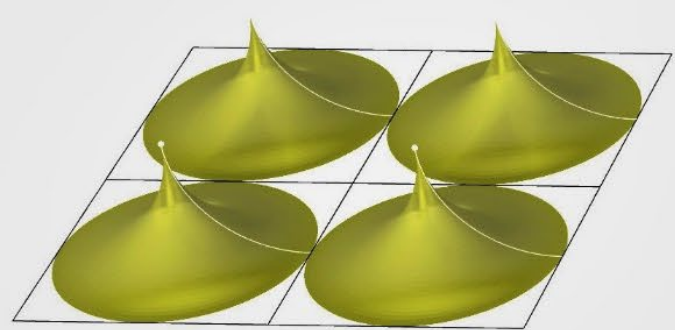
# Exercício. 4.0 – Projeção + “gradient” + Curvas



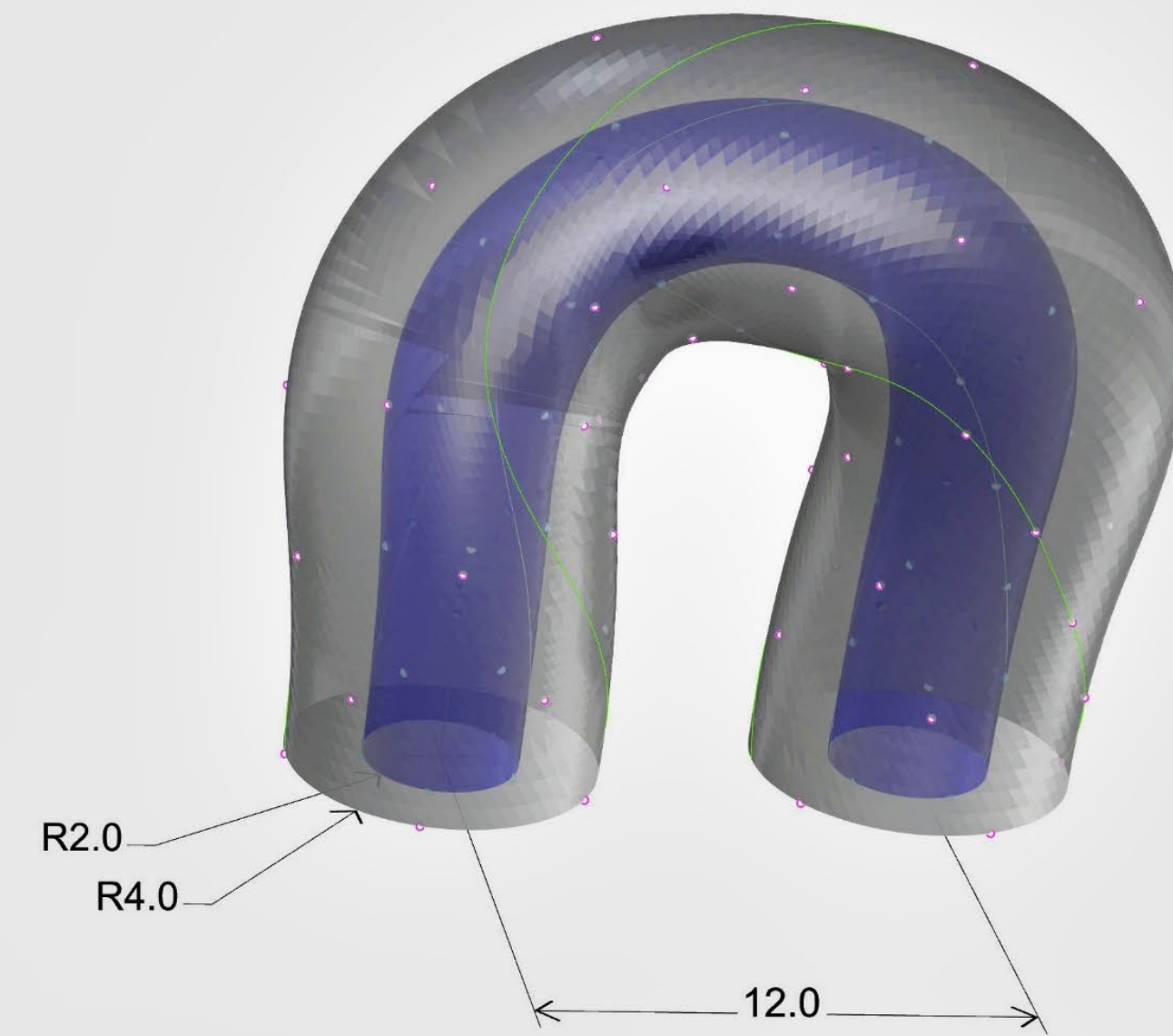
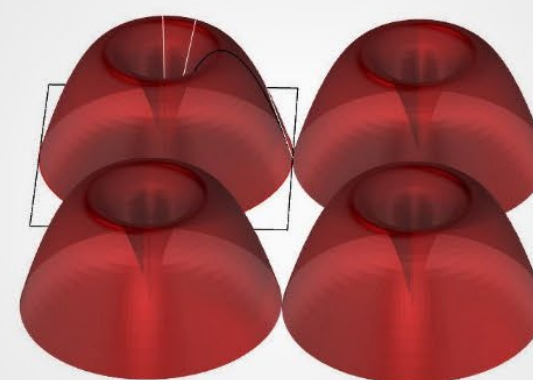
# Exercício. 5.0 - Corais



**5.1 Coral A**



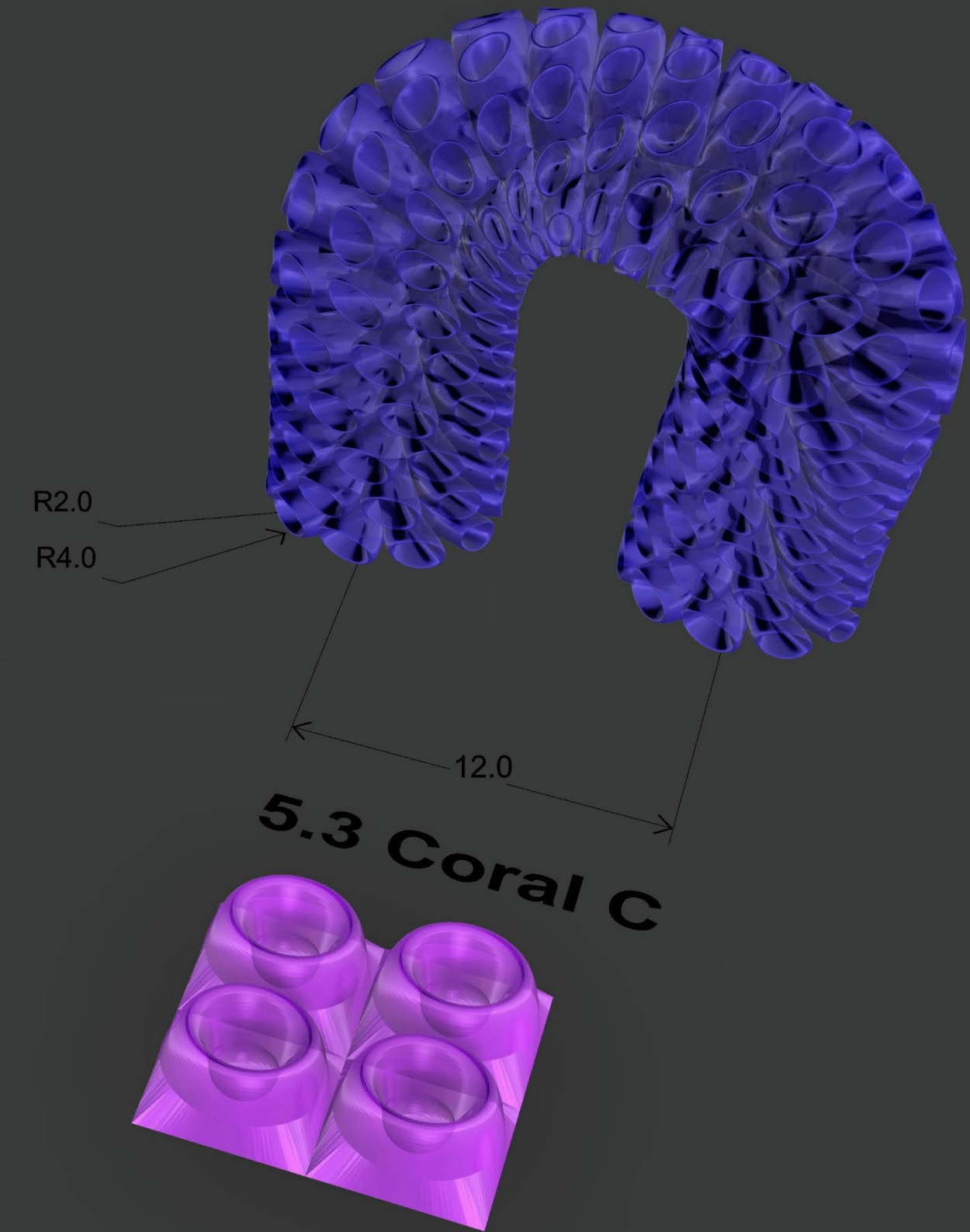
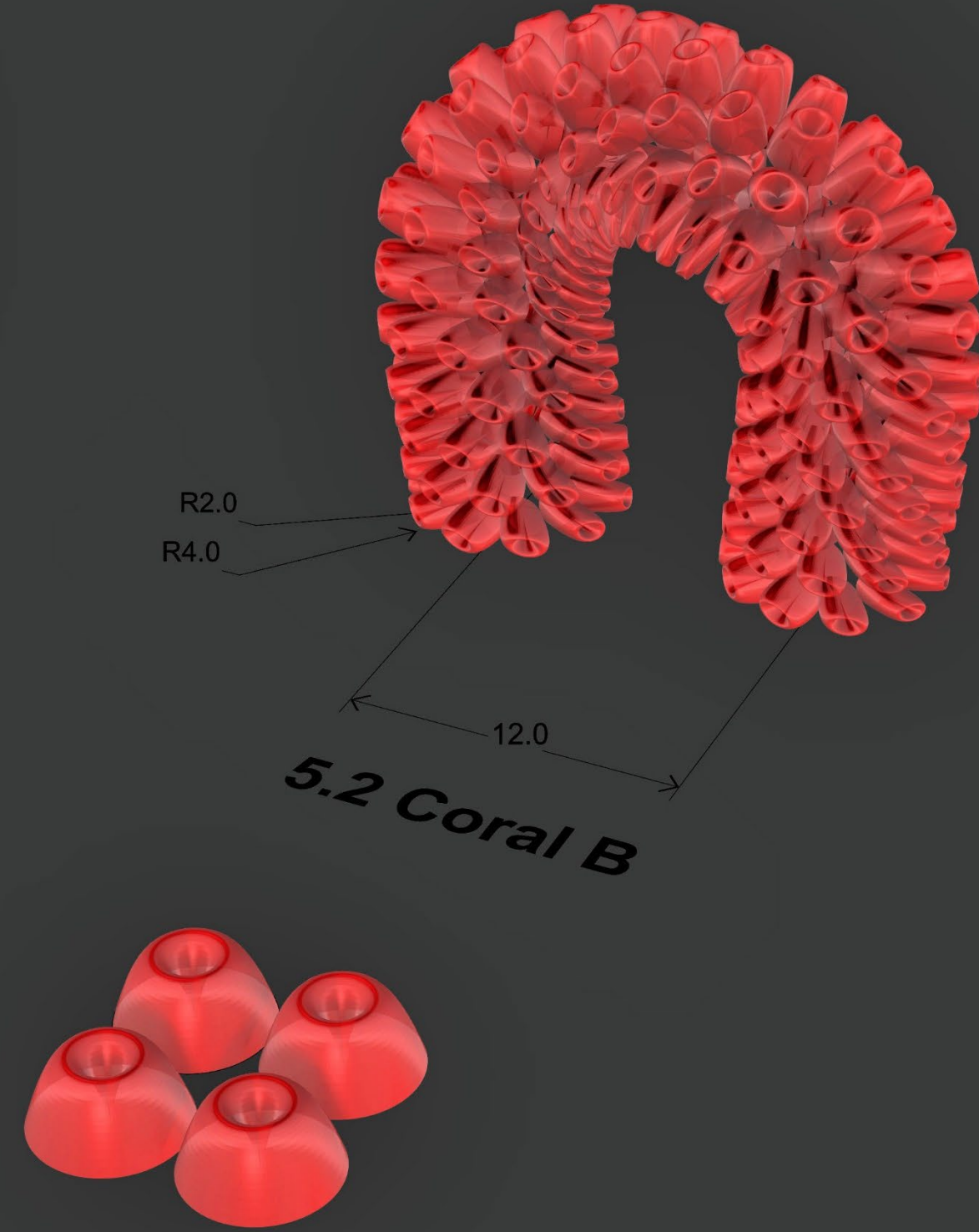
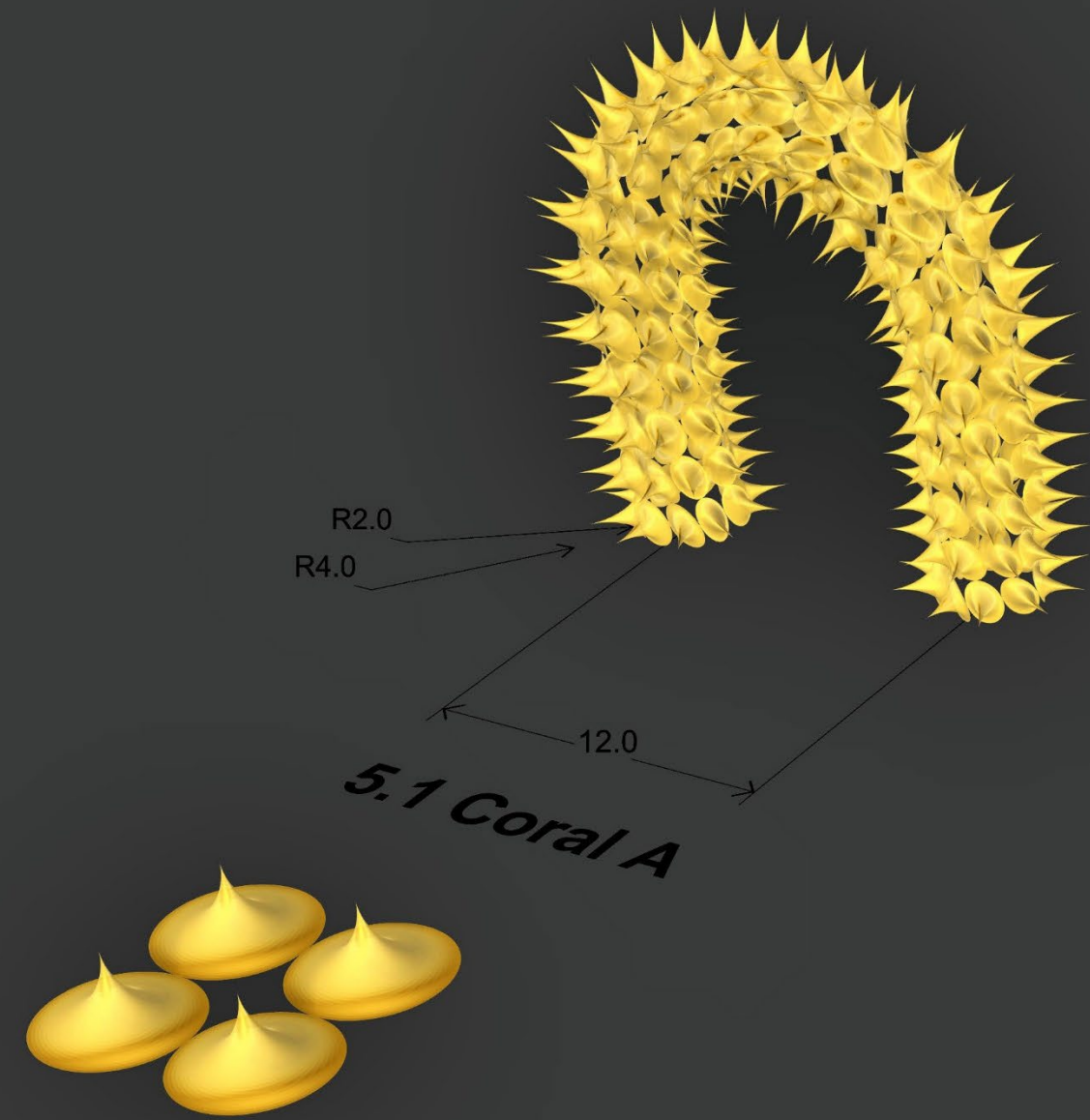
**5.2 Coral B**



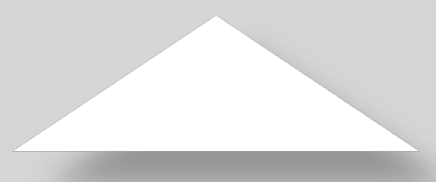
**5.3 Coral C**



# Exercício. 5.0 - Corais Geometria

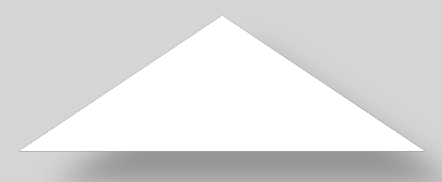
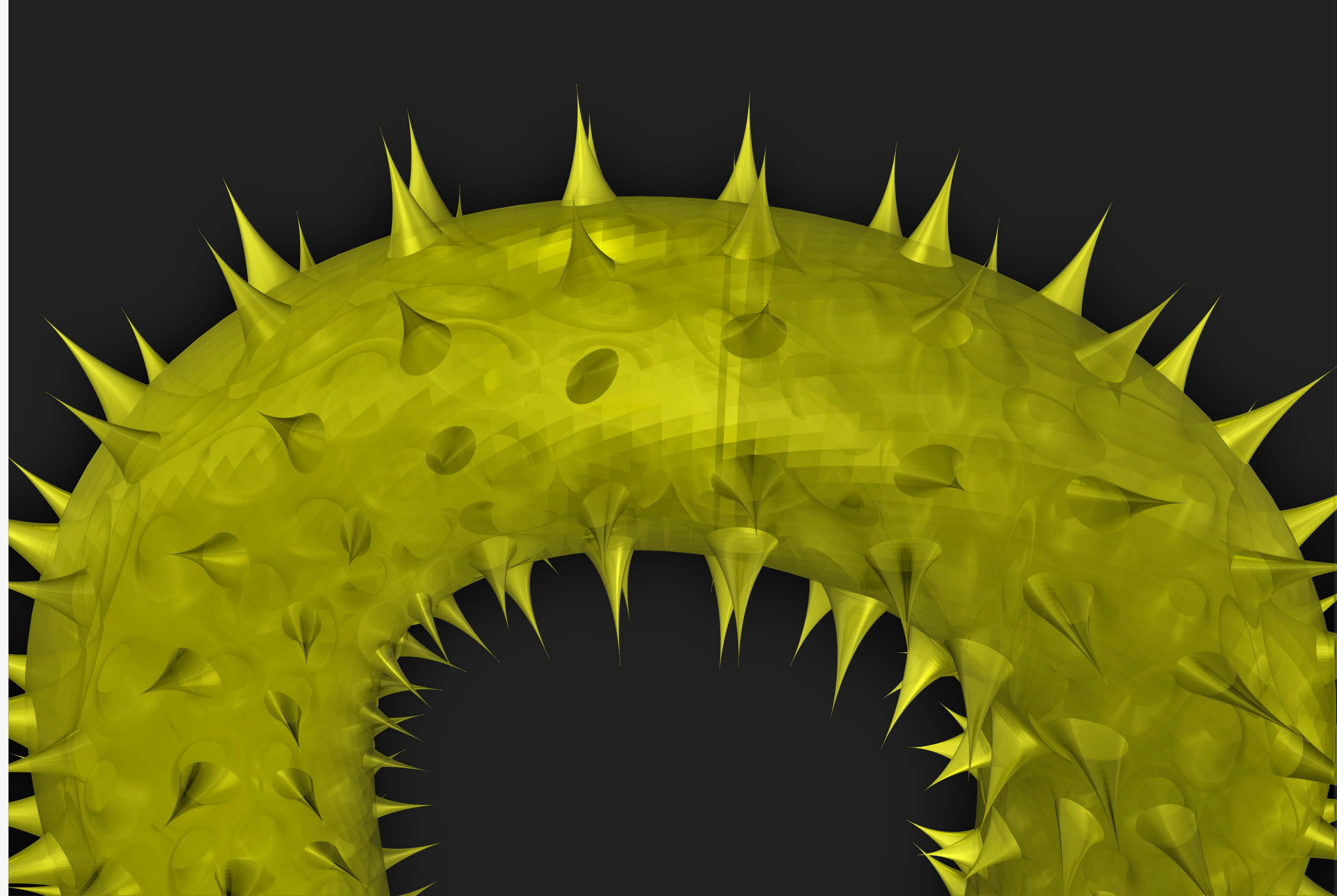
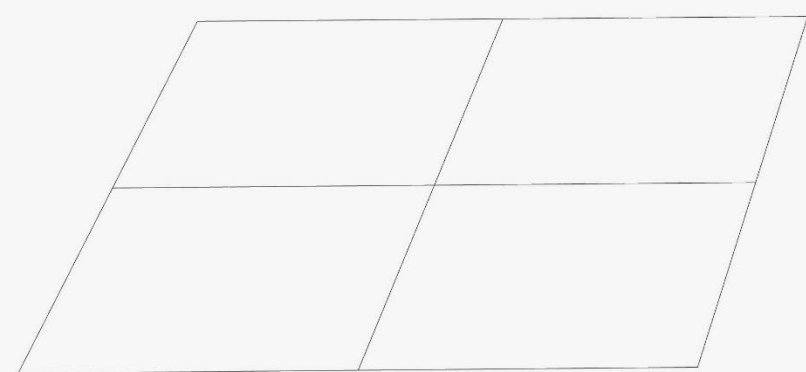


# Exercício. 5.0 - Corais Geometria

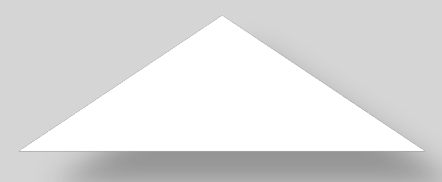
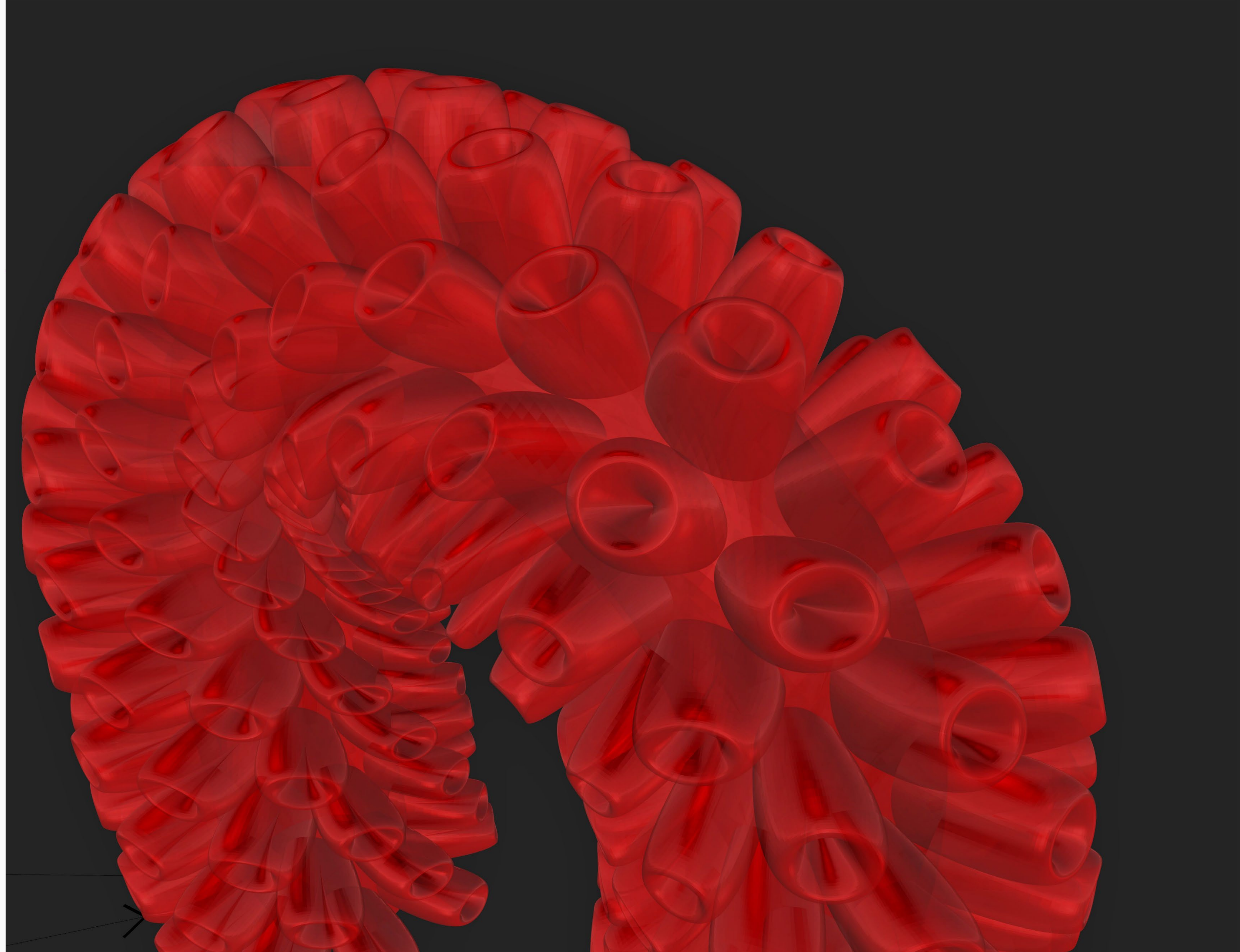
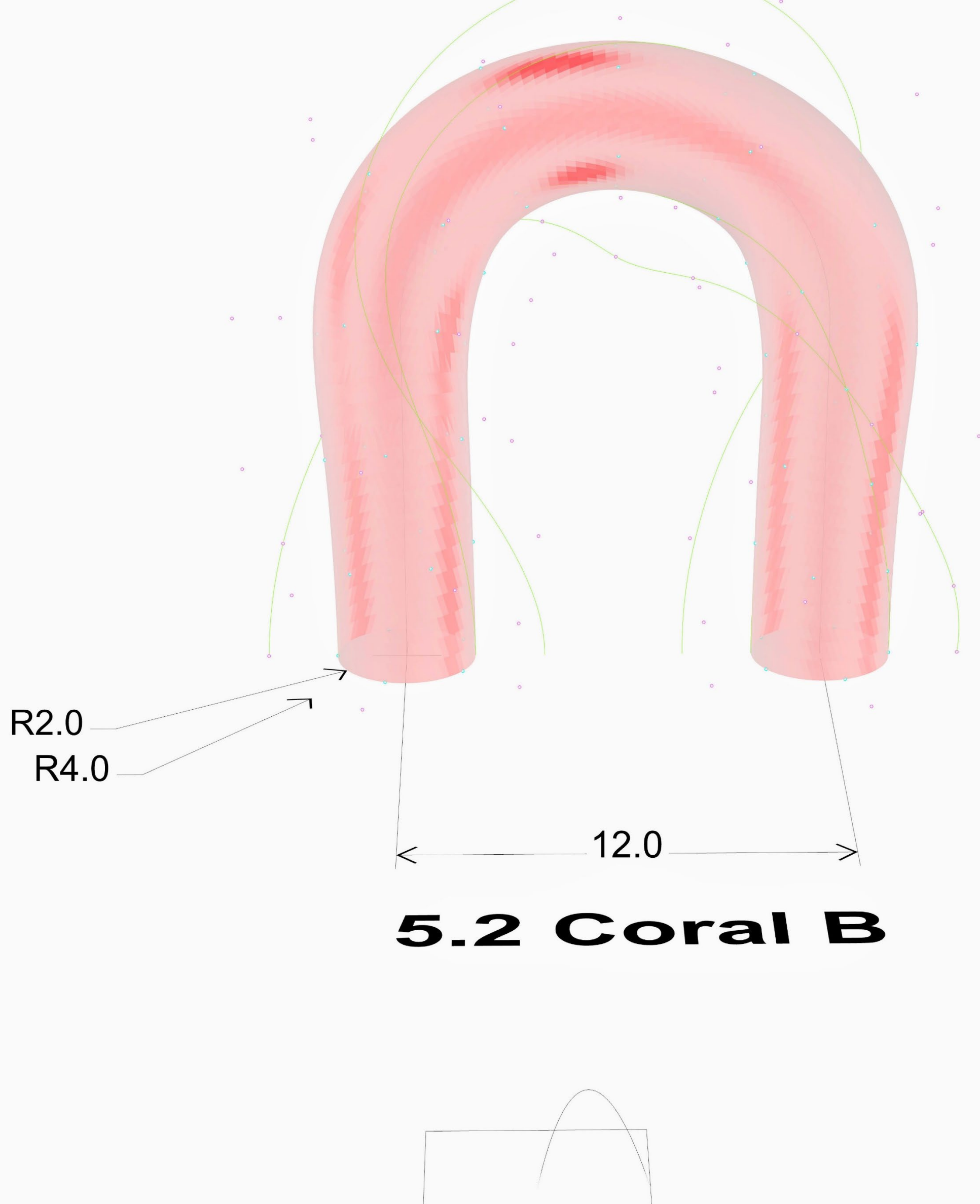




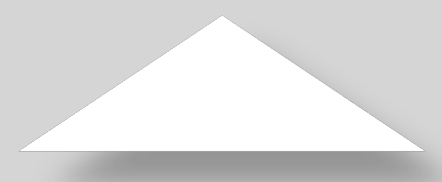
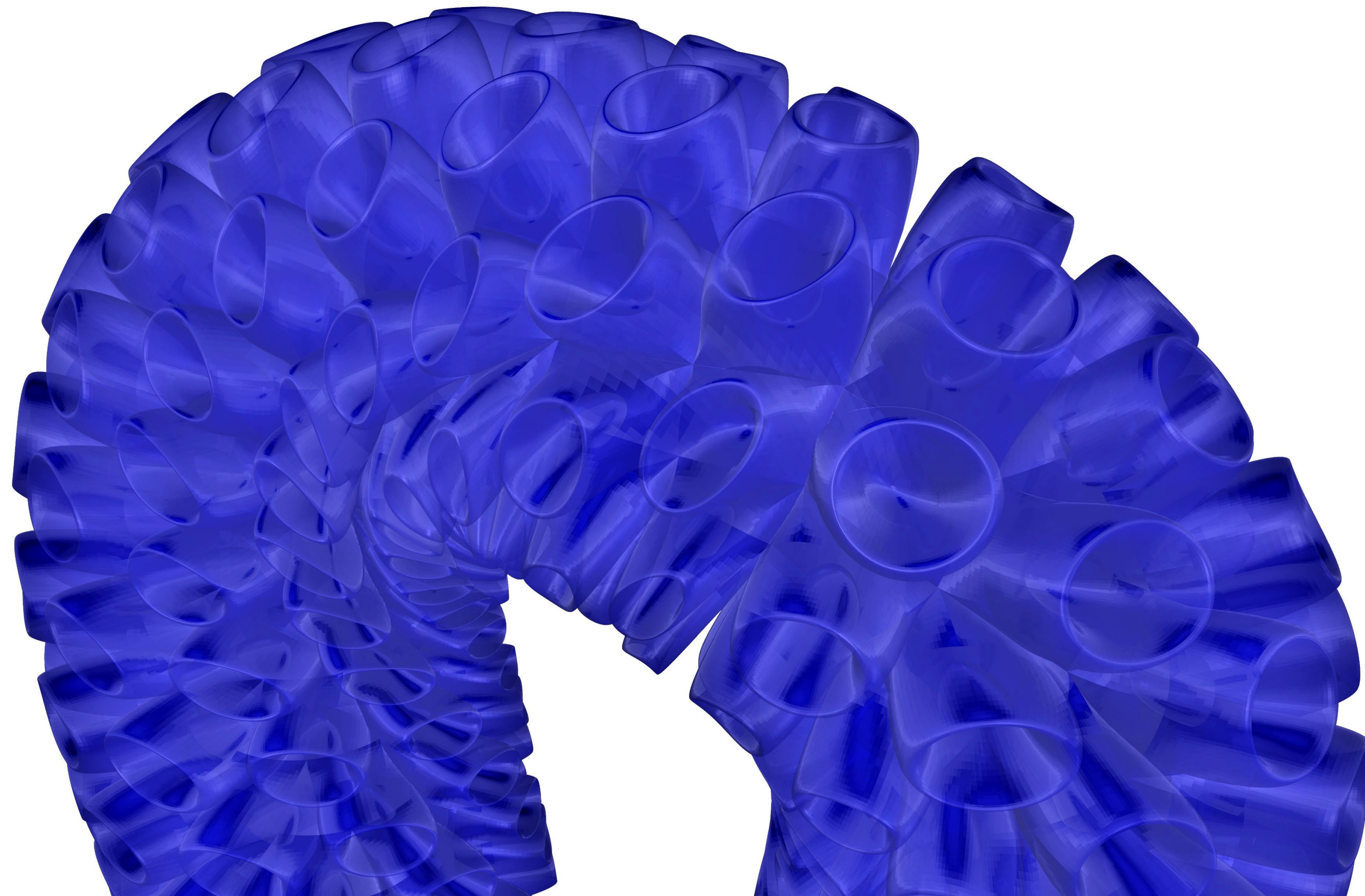
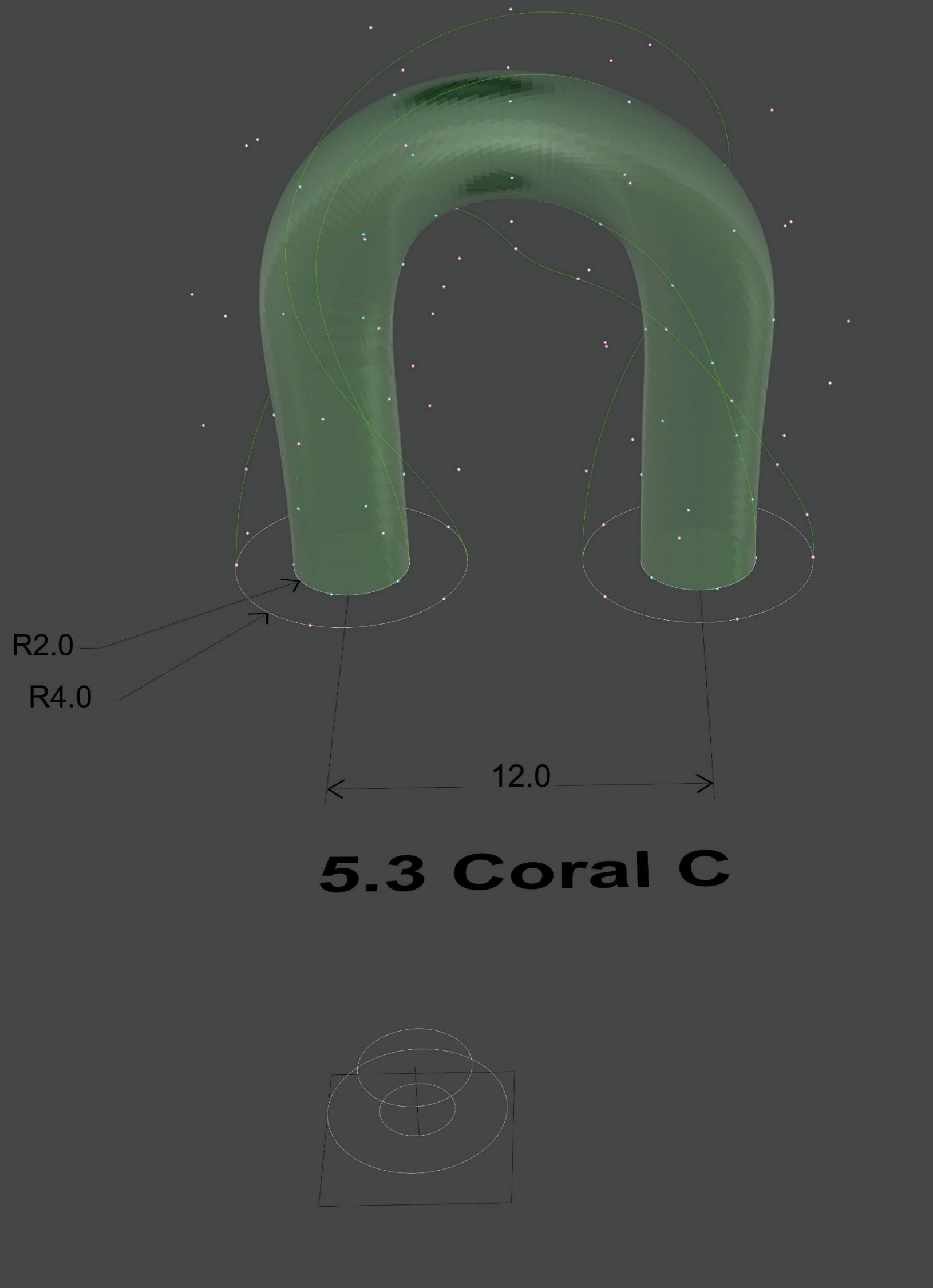
**5.1 Coral A**



Exercício. 5.0 - Coral A

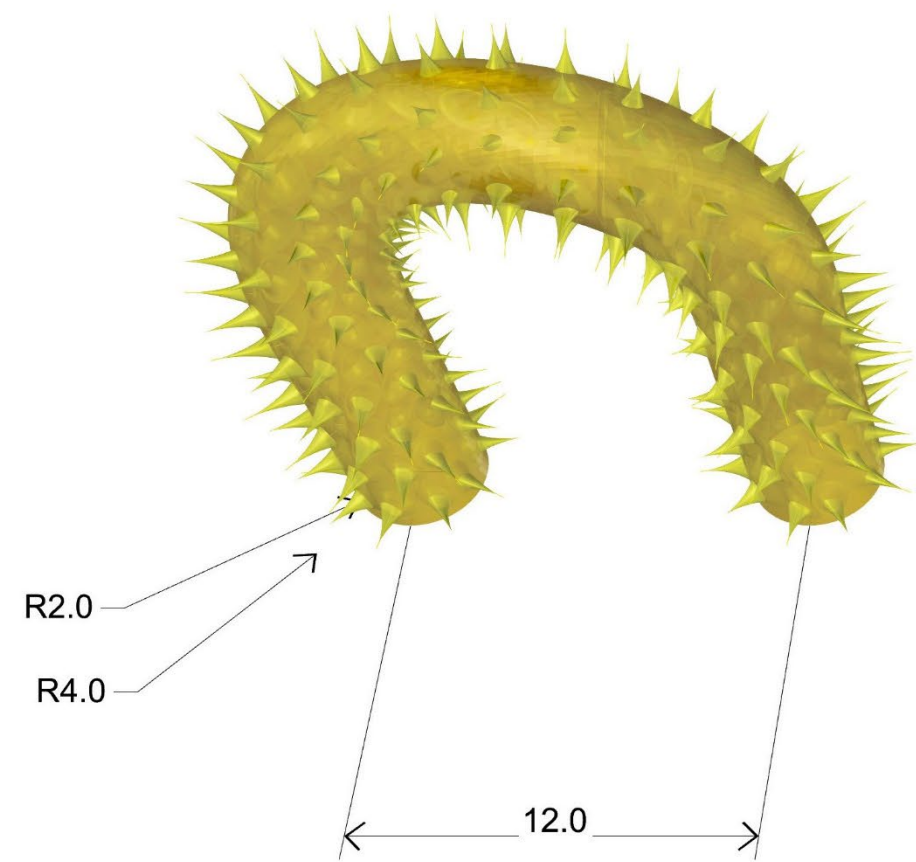


Exercício. 5.0 - Coral B

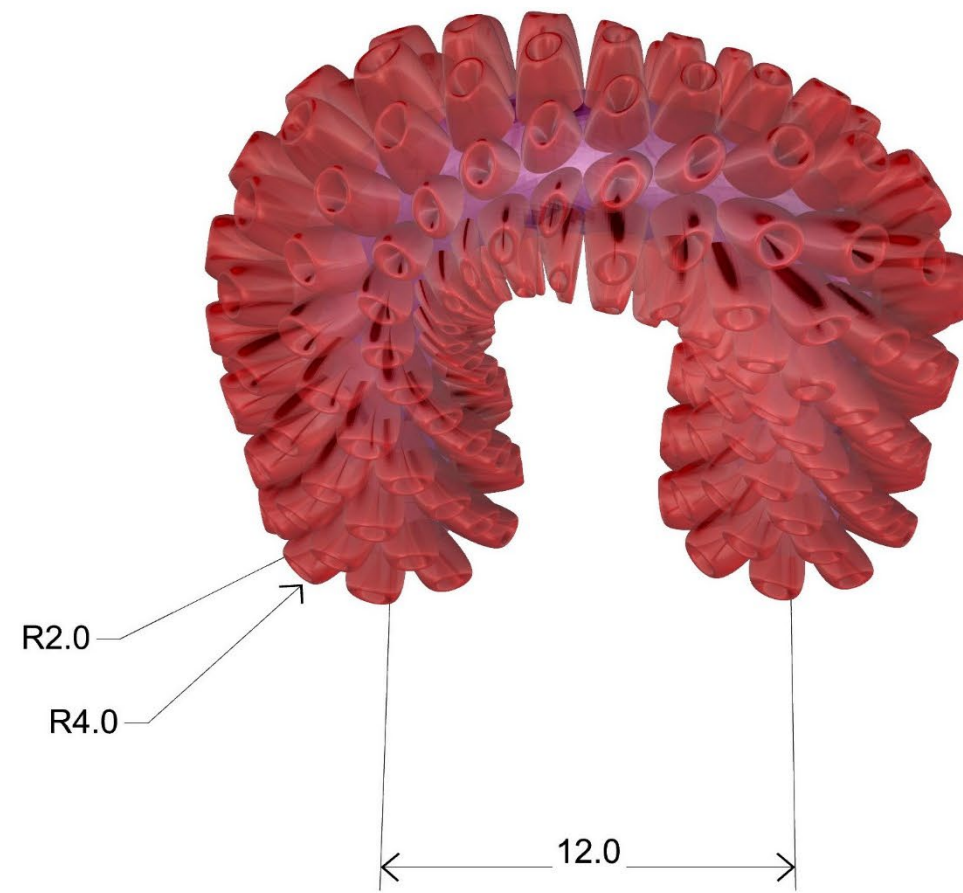
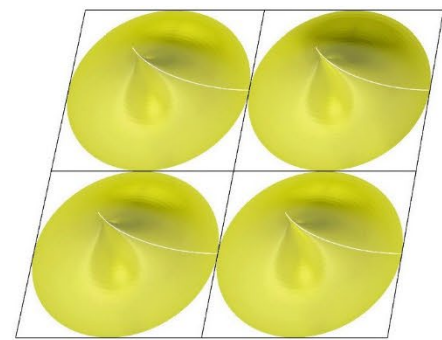


Exercício. 5.5 - Coral C

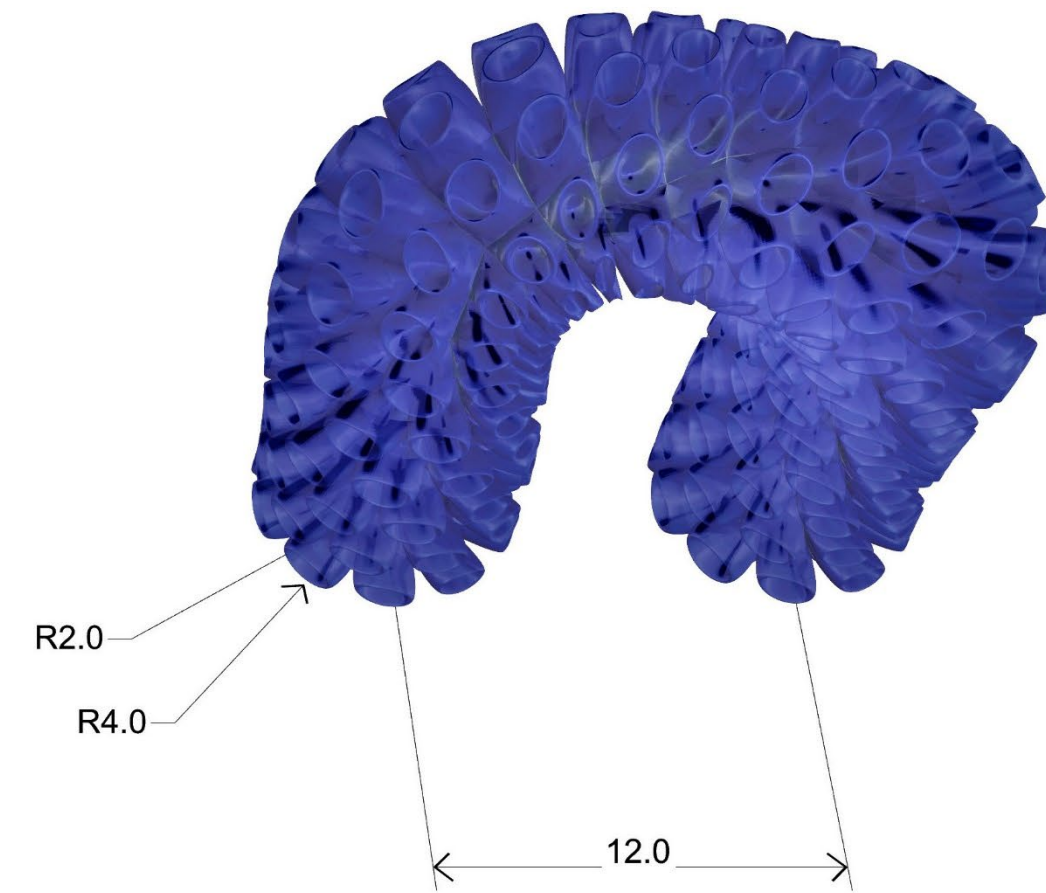




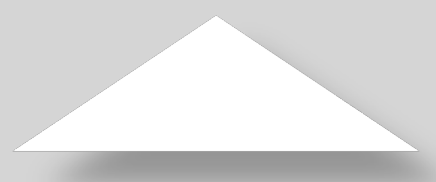
**5.1 Coral A**



**5.2 Coral B**



**5.3 Coral C**



# Exercício. 5.0 - Painéis + Corais