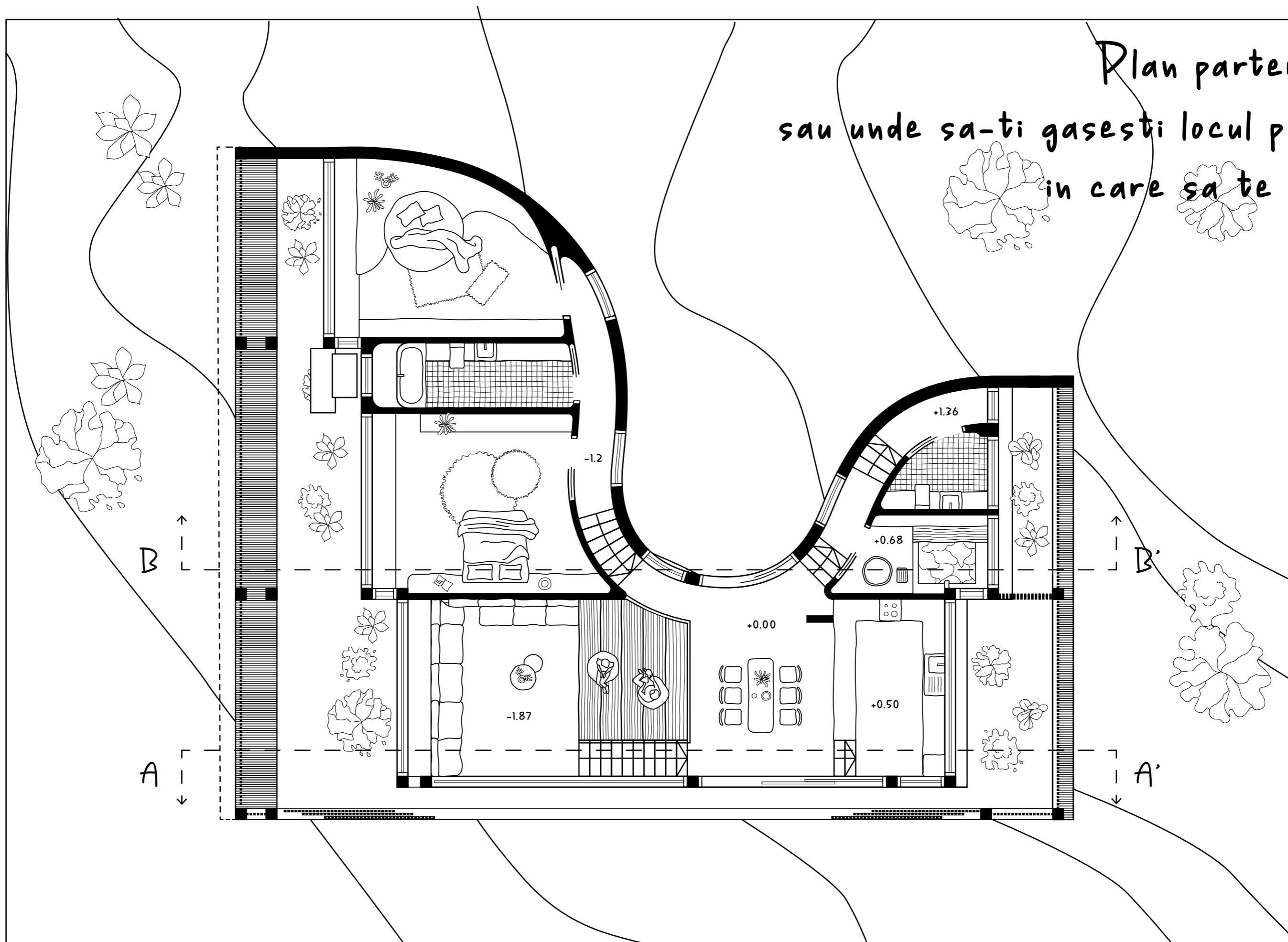
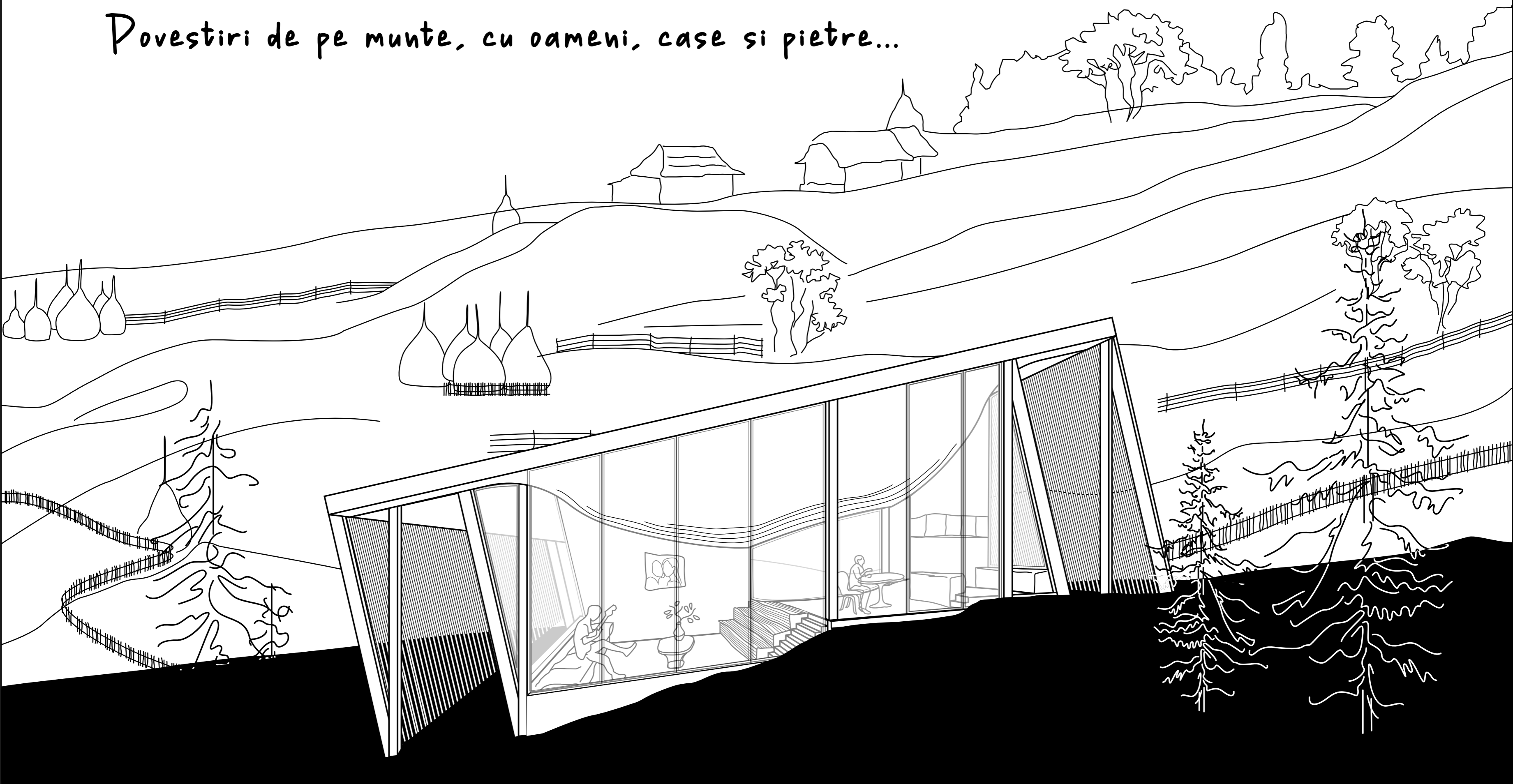


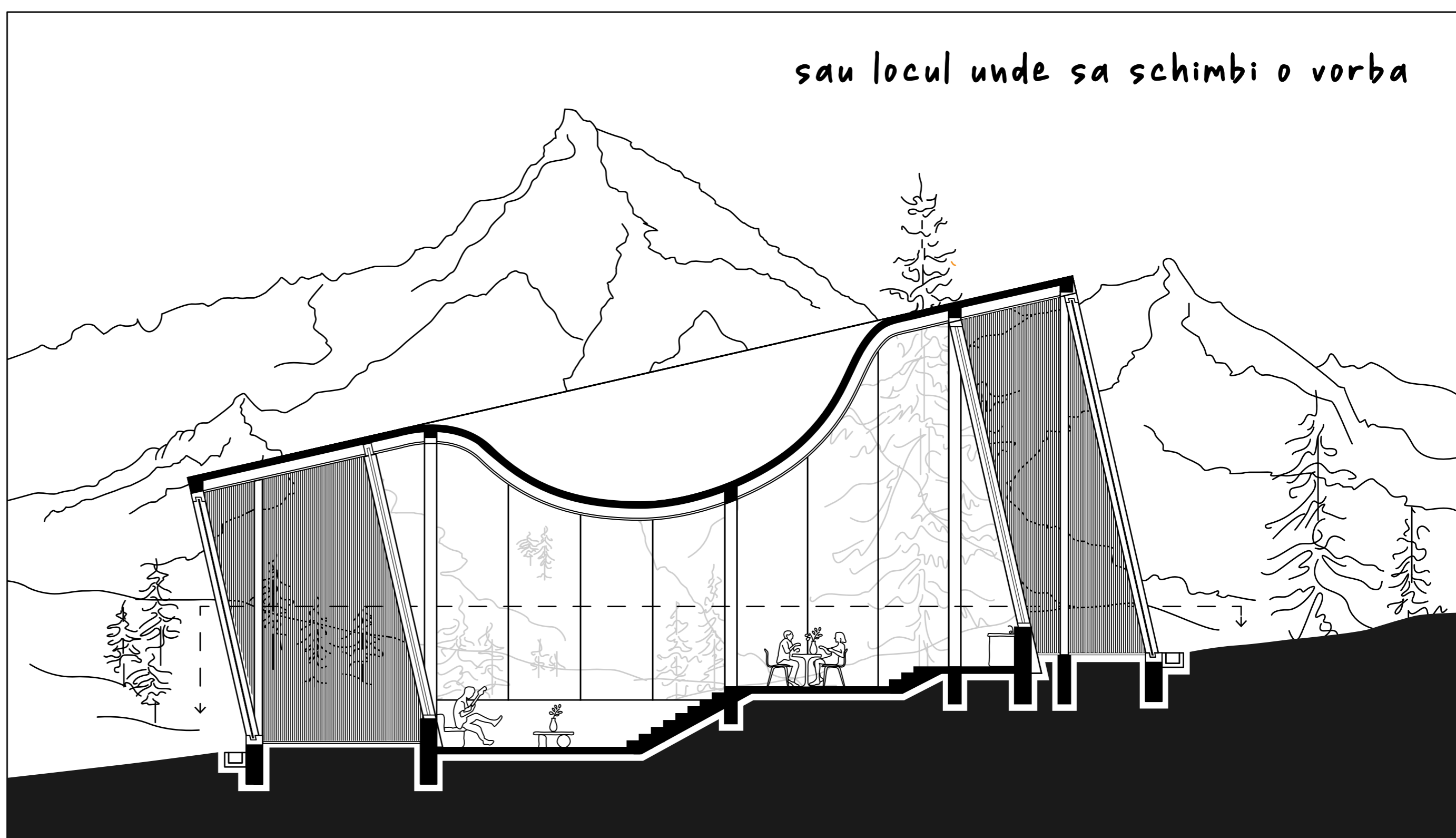
Povestiri de pe munte, cu oameni, case si pietre...



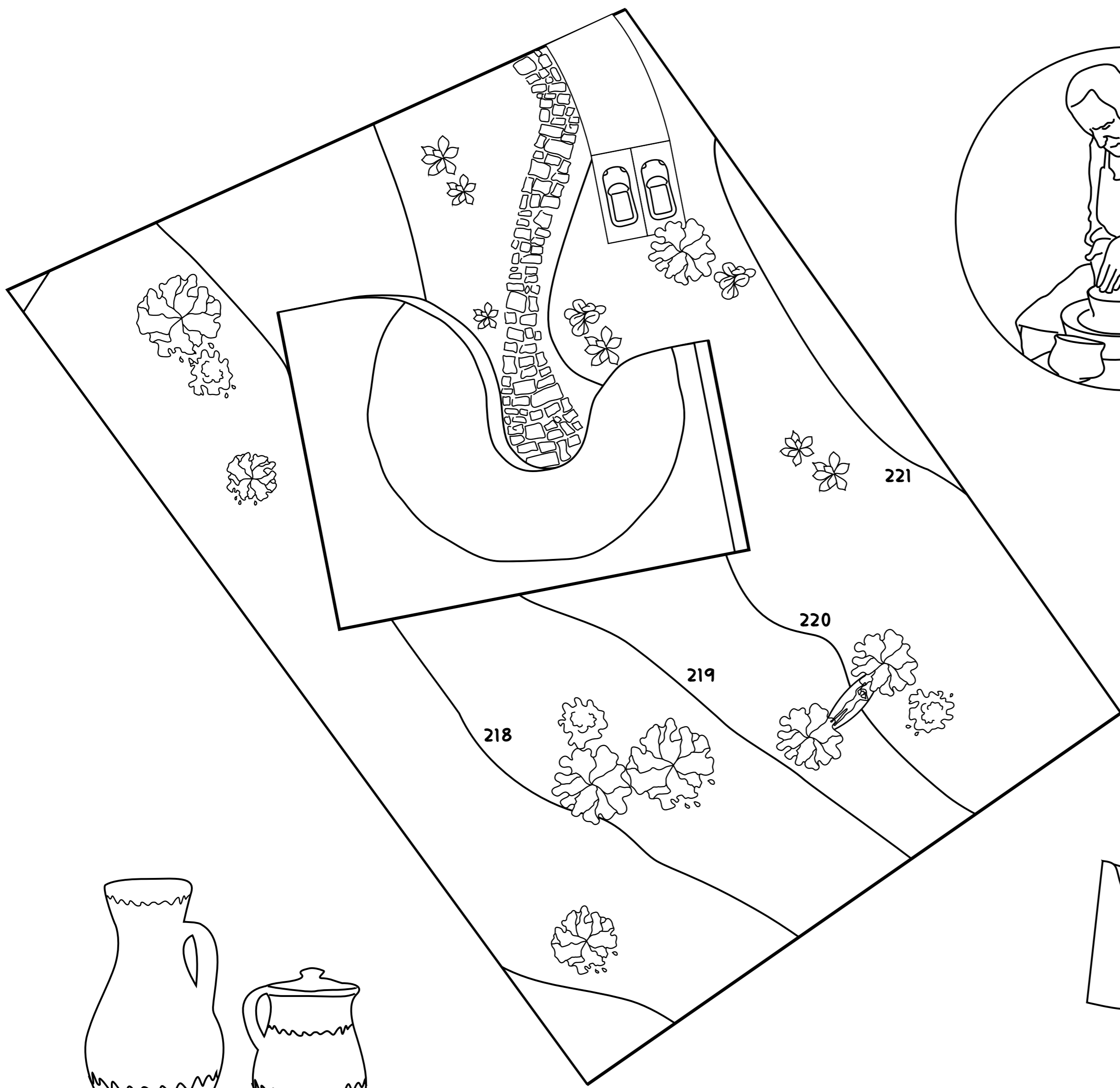
Plan parter 1:100
sau unde sa-ti gasesti locul perfect
in care sa te pitești

sectiune A A'

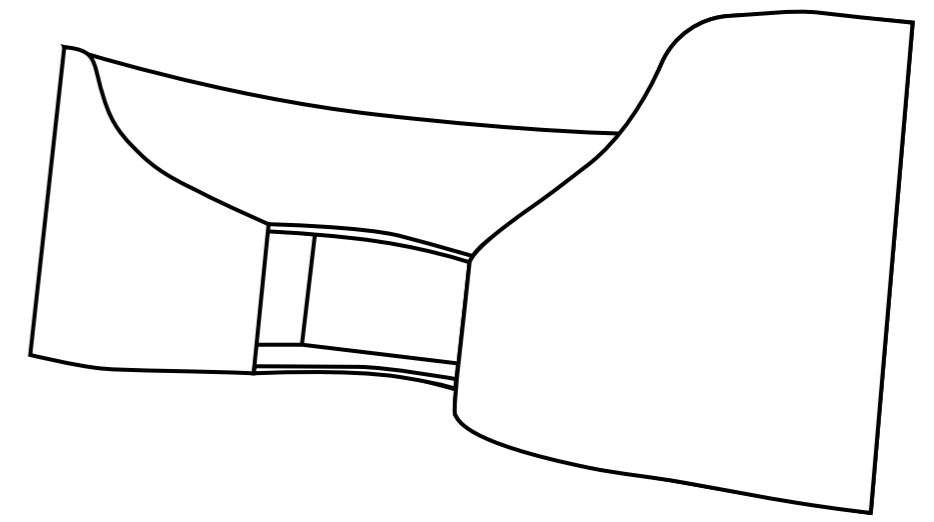
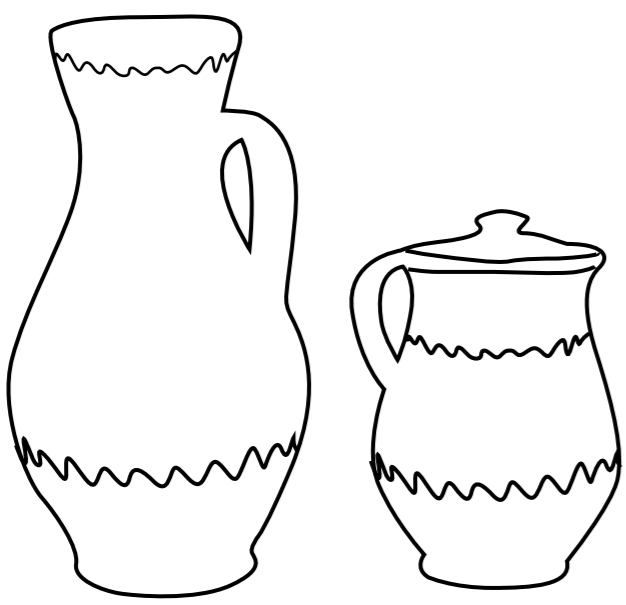
sau locul unde sa schimbi o vorba



PROIECT SCURT AN II
CASĂ DE VACANȚĂ
DANA LUPAN
COORD. ASIST. DR. ARH. TIBERIU STANCIU
2023
FACULTATEA DE ARHITECTURĂ „G.M. CANTACUZINO”
UNIVERSITATEA TEHNICĂ „GHEORGHE ASACHI” DIN IAȘI



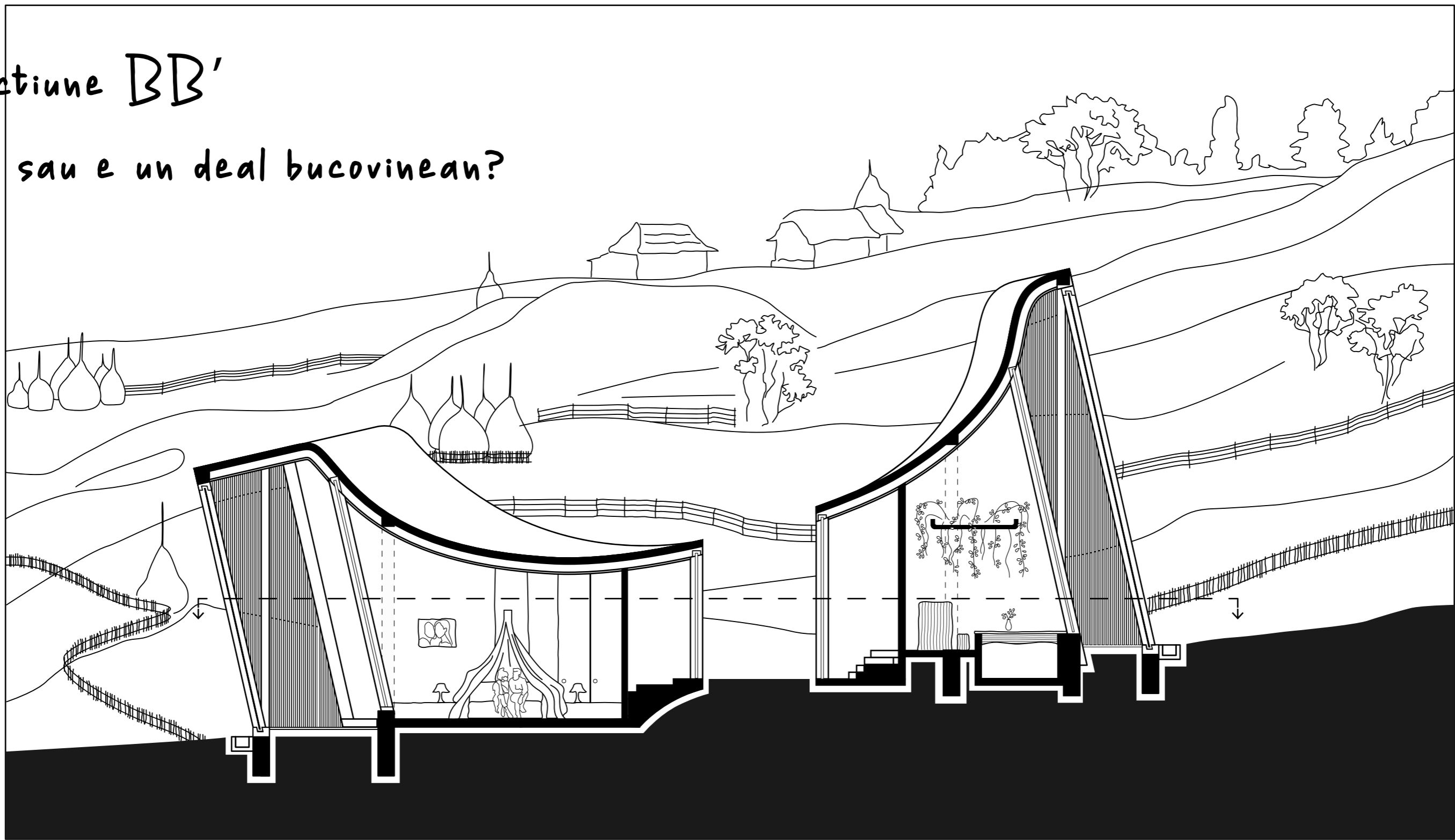
Linii curbe care aduc
aminte de mestesugurile
si traditiile romanesti
populare



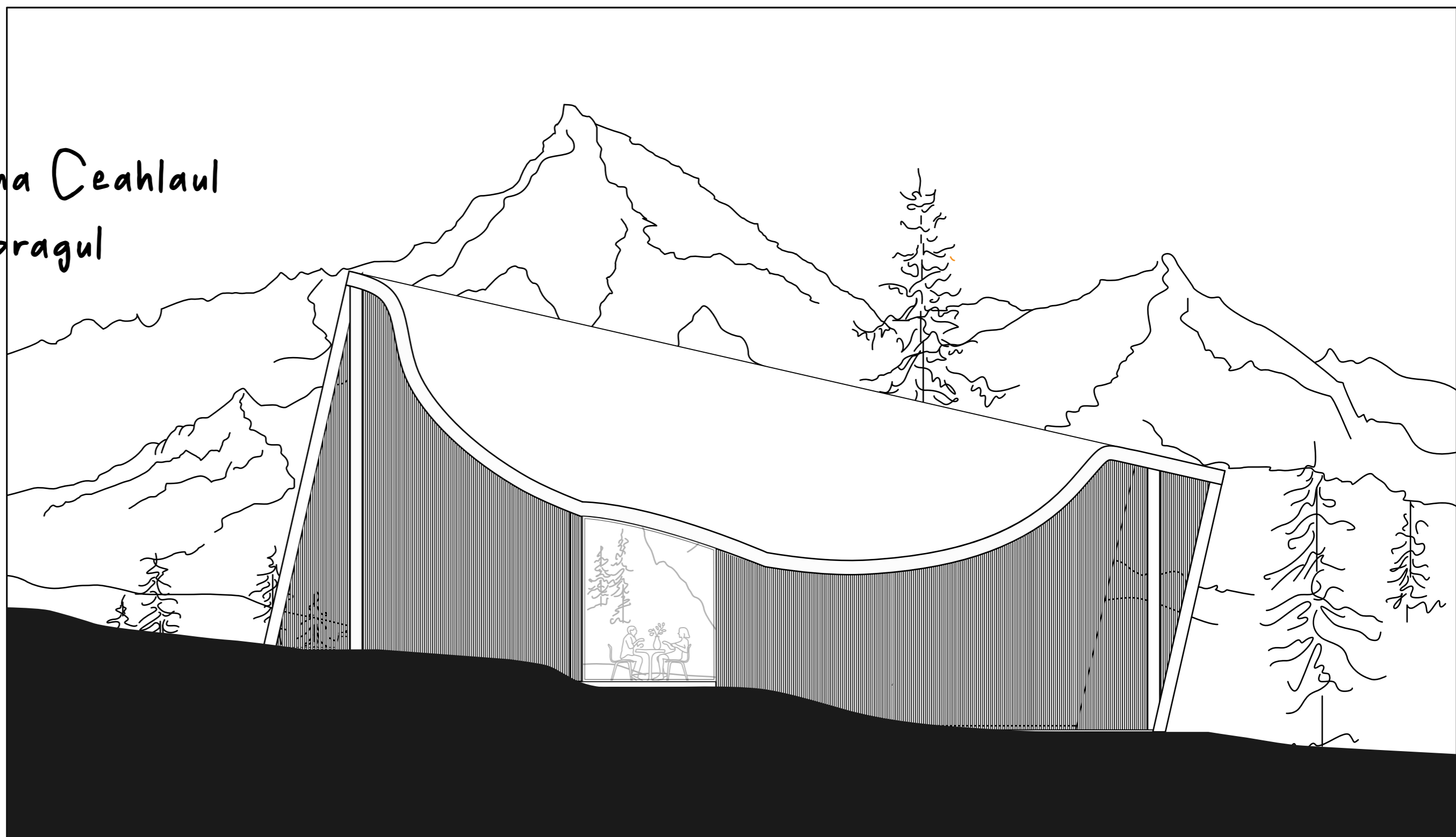
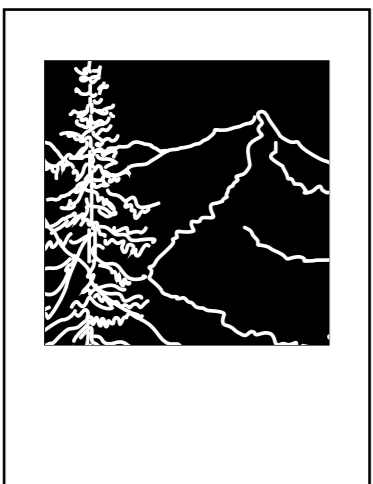
Fatada orientata spre sat este calda,
te invita si te imbratiseaza

sectiune BB'

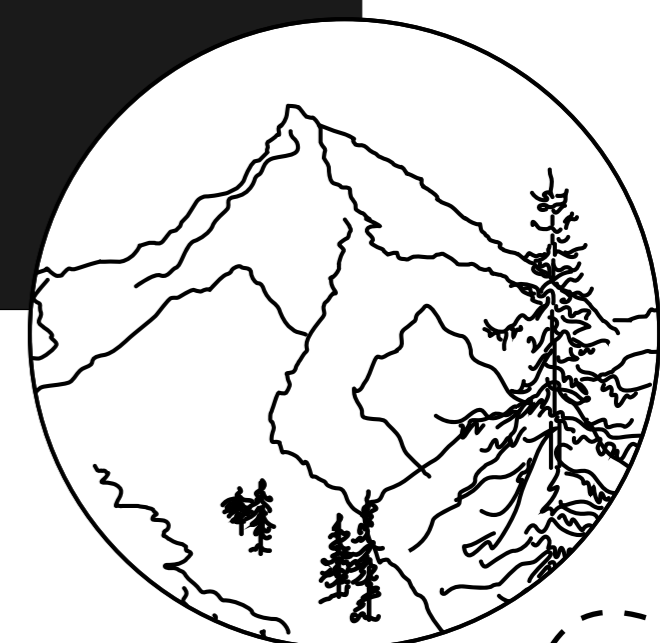
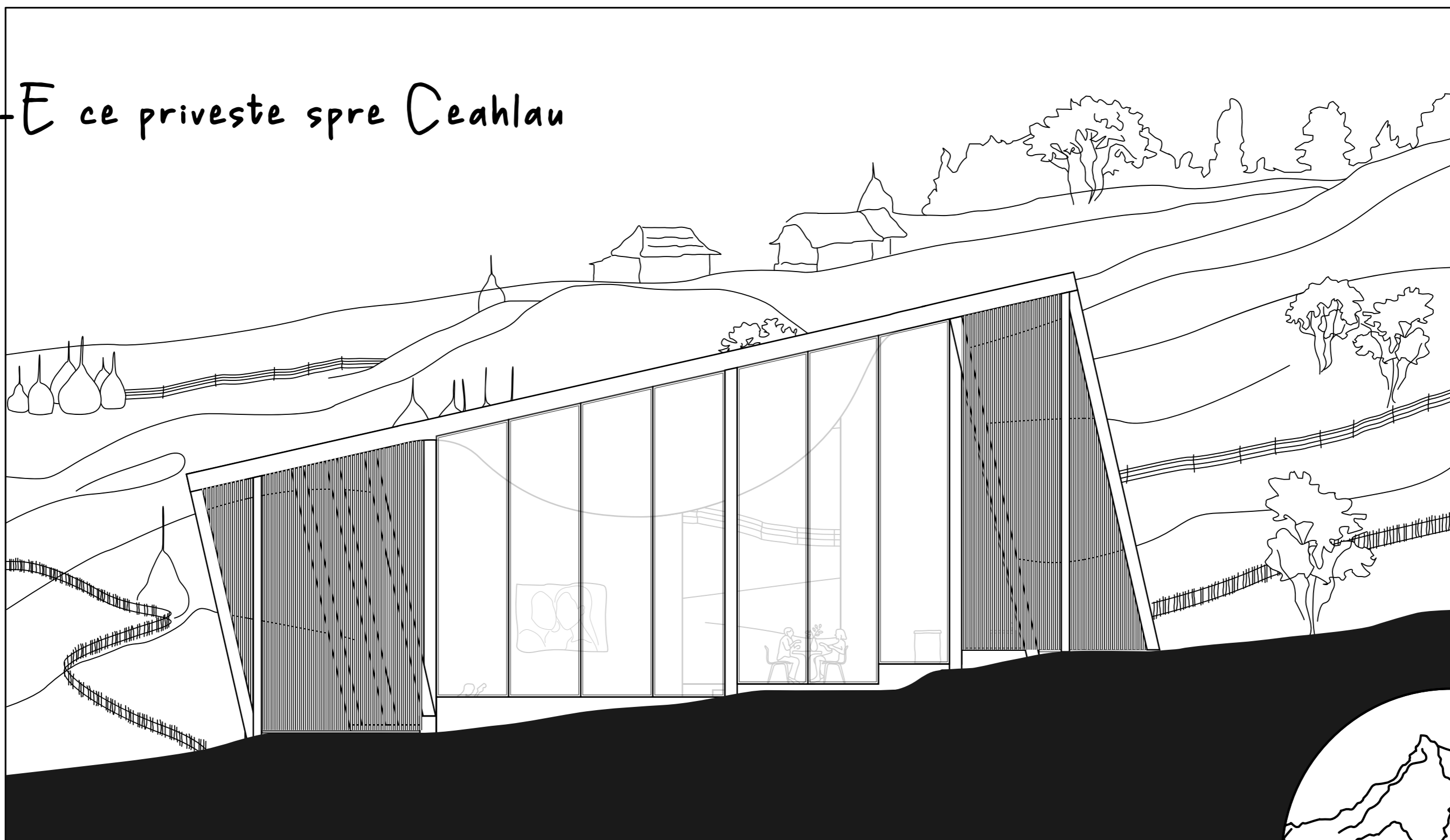
E o casa sau e un deal bucovinean?



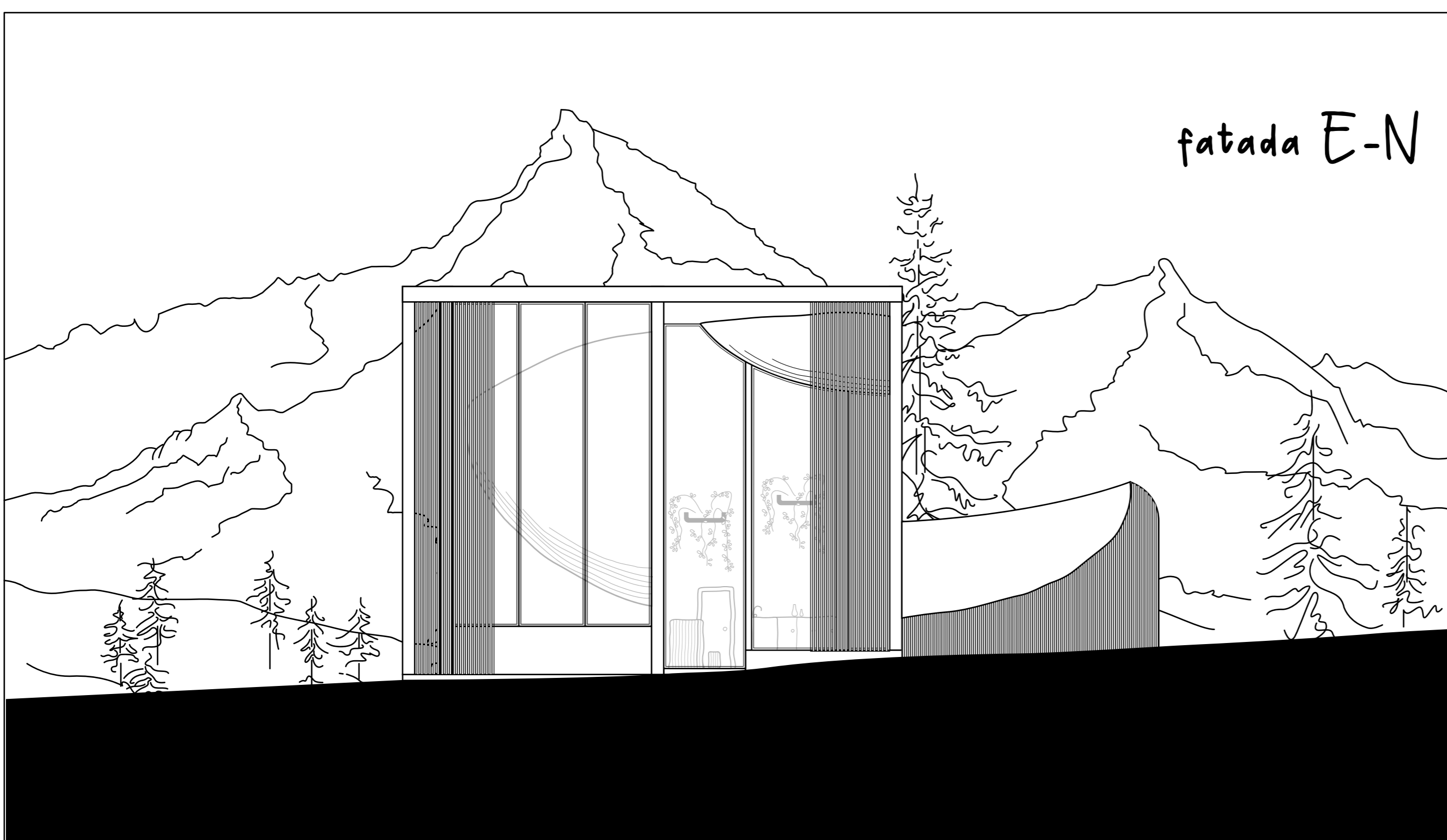
fatada N-V spre sat
ce incadreaza ca o rama Ceahlaul
si te invita sa-i treci pragul



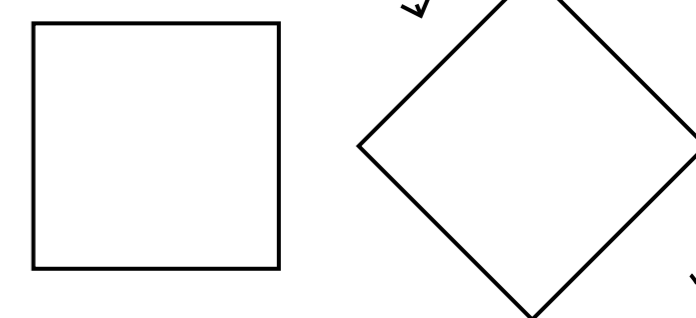
fatada S-E ce priveste spre Ceahlau



fatada E-N



Linii abrupte si ascutite
inspirate din piscurile muntilor



Casa ca o stanca
ce priveste spre abrupt



In ziua 1
fu muntele.
Liniste.
Aer curat.
Pasuni.



In ziua 2
sosira oamenii.
Mancara.
Sporovaira.
Se plictisira.



In ziua 3
Construira
o casa.



In ziua 4
muntele
se suparase
si toata ziua
tremurase.



Wait... wait...
...

What?

Inspirat din Amintiri din Copilarie... Nica si Caprele Irinucai...



fatada S-V

