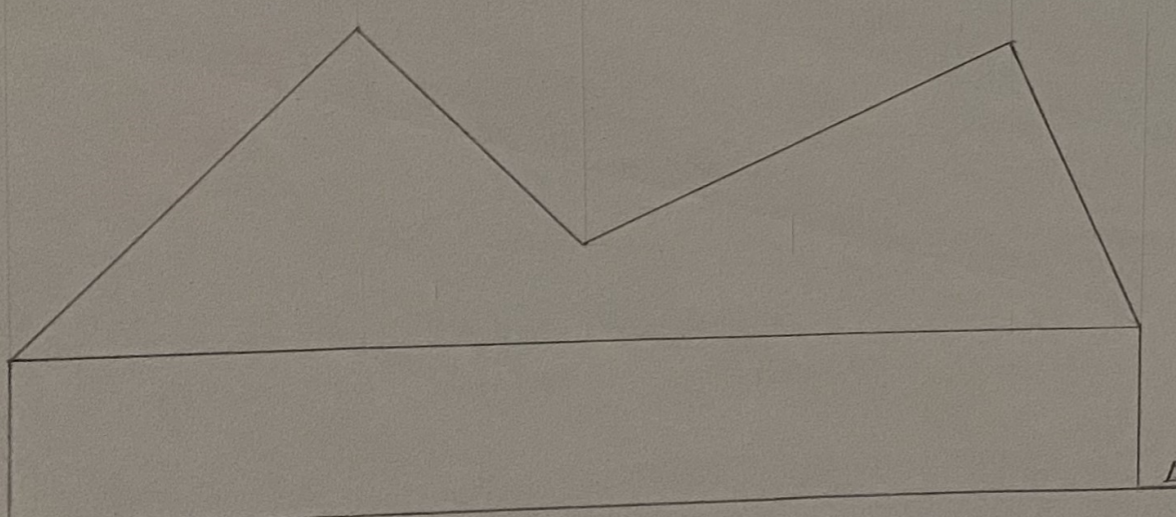
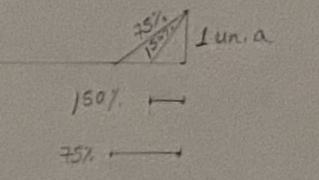
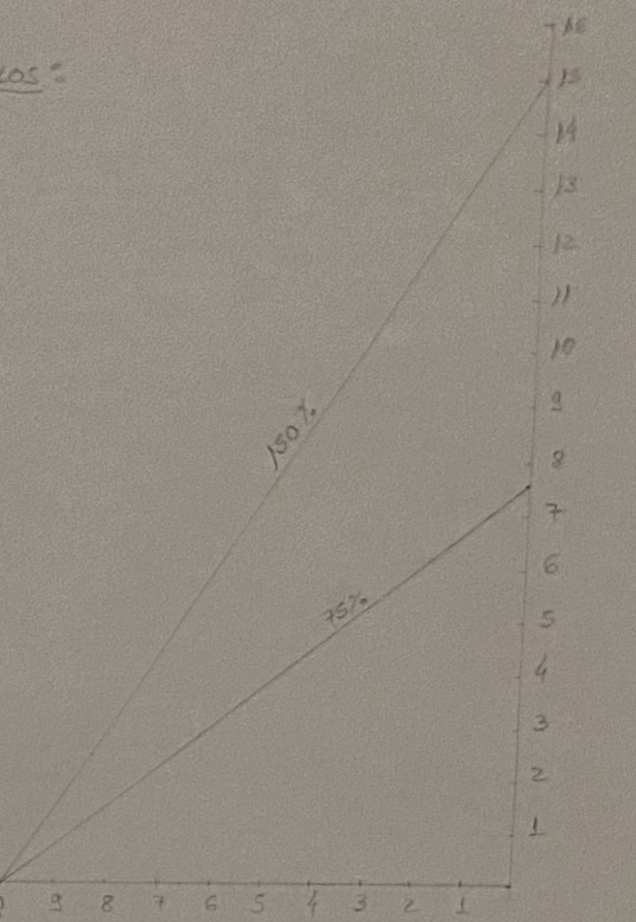


DECLIVES:
 AB = 100% = 1
 BC = 1,5 = 150%
 CD = 200% = 2
 DA = 1
 WX = 2 = 200%
 XY = 45° = 1
 WY = 0,75 = 75%
 ESC = 1/100
 $\frac{1 \text{ un. a}}{1 \text{ m}}$



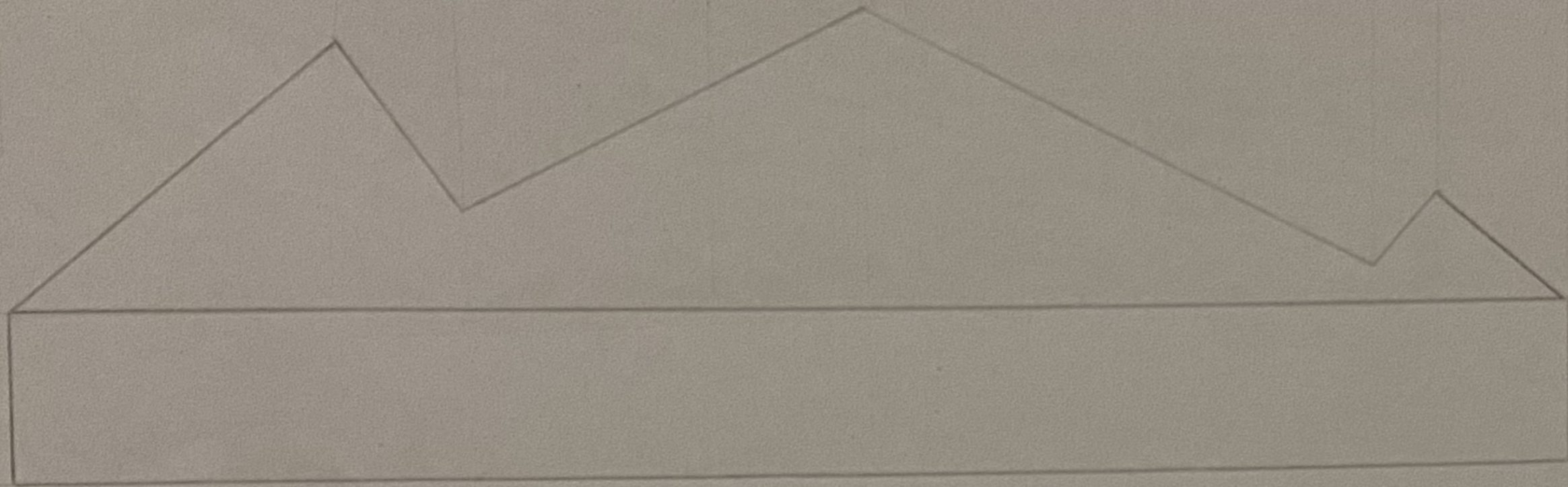
$a_e = 5,4 \times 1 = 5,4 \text{ m}$
 $a_d = 0,7 \times 1 = 0,7 \text{ m}$
 $a_e = 2 \times 1 = 2 \text{ m}$

$\frac{d}{\text{declive}} = \frac{\text{altura}}{\text{componente}}$
 $a_a = 5,8 \times 1 = 5,8 \text{ m}$
 $a_b = 1,8 \times 1 = 1,8 \text{ m}$
 $a_c = 5,4 \times 1 = 5,4 \text{ m}$

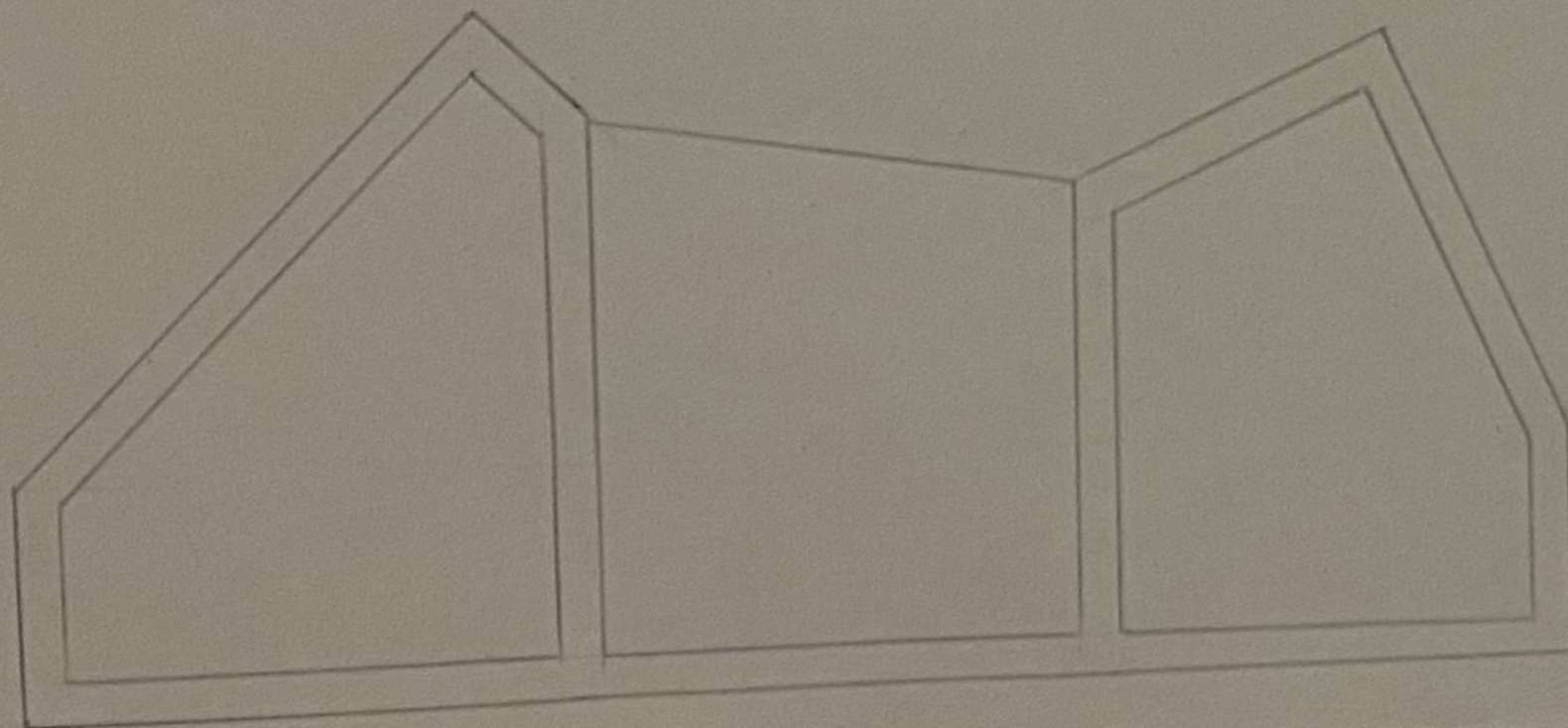
JULIETA PALMA
 N° 20231360
 TPIA LG

JULIETA PALMA
 N° 20231360
 TPIA LG

RECADO NO PLANO OBLÍQUO



CORTE \overline{BE}



JULIETA DA SILVA
Nº 2023/360
TMA 1 G