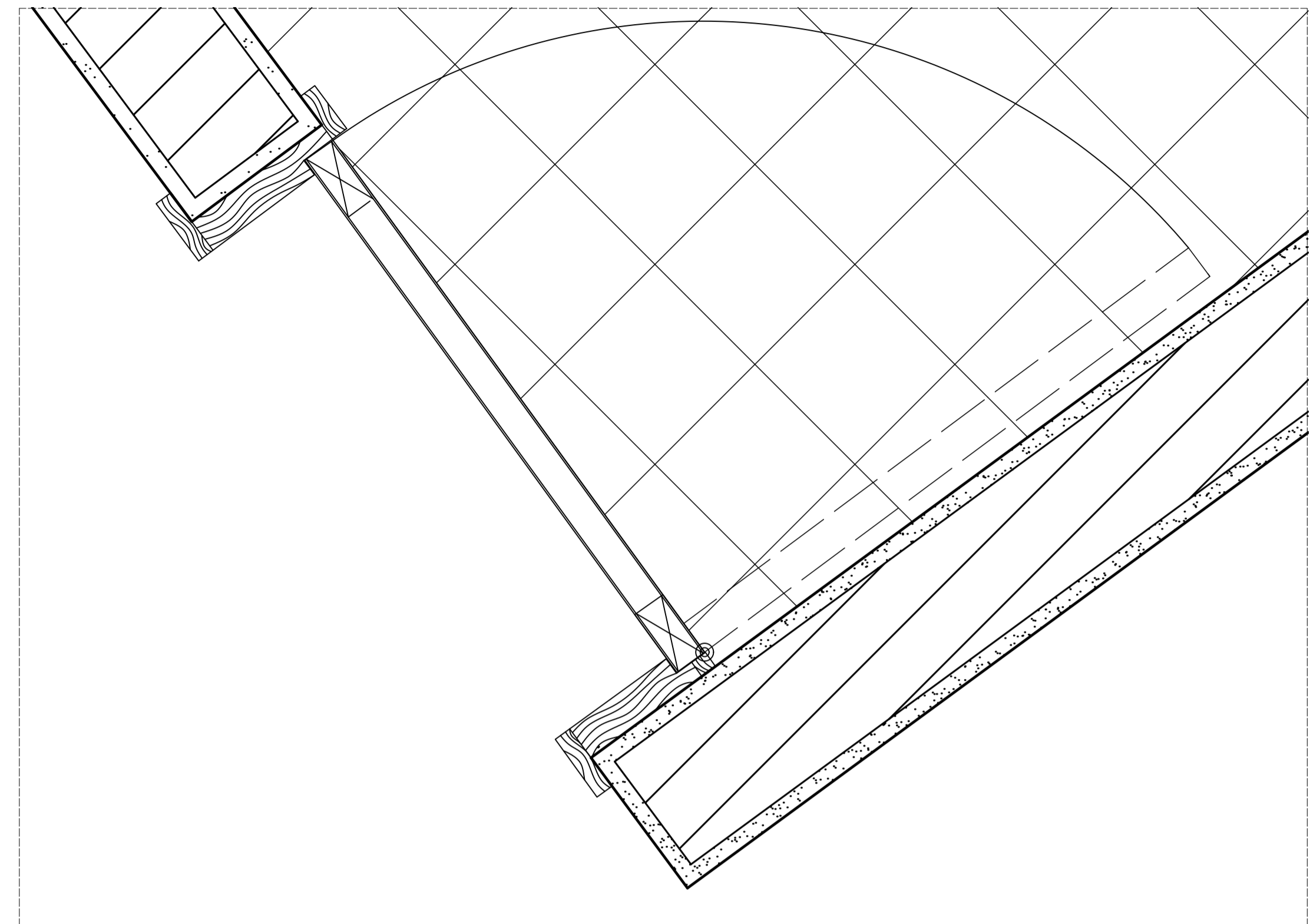
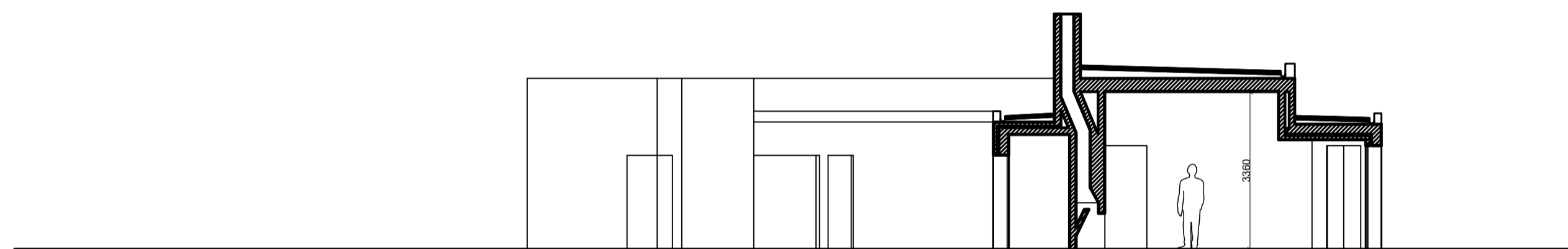


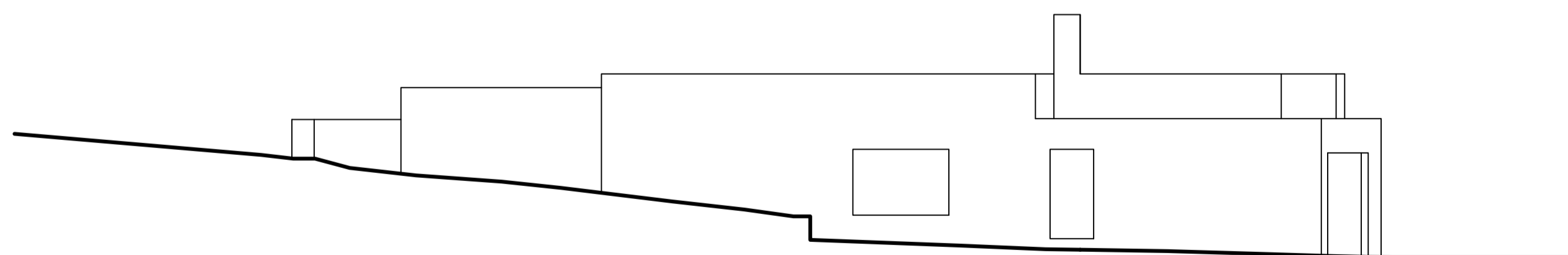
Planta  
Esc. 1:100



Pormenor Construtivo  
Esc. 1:5



Corte A A'  
Esc. 1:100



Alçado Poente  
Esc. 1:100

<b>Álvaro Siza (Teodomiro Afonso Pires)</b>	
Casa António Carlos Siza	
Ano do Projeto: 1976-1978	Escala 1/100 e 1/1
Desenhos/Planta/Pormenores	Data e Assinatura 25/10/2024