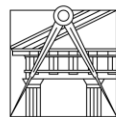


Representação Digital

2023-2024

U LISBOA

UNIVERSIDADE
DE LISBOA



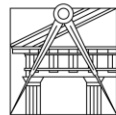
FACULDADE DE ARQUITETURA
UNIVERSIDADE DE LISBOA

Mestrado Integrado em Arquitetura
Ano Letivo 2023-2024 1º Semestre
Docente – Nuno Alão 2º Ano

Índice

Semana 1- Slide 4
Semana 2- Slide 6
Semana 3- Slide 13
Semana 4- Slide 15
Semana 5- Slide 18
Semana 6- Slide 19
Semana 7- Slide 21
Semana 8- Slide 23
Semana 9- Slide 25
Semana 10- Slide 26

Semana 11- 27
Semana 12 - 28
Semana 13- 29
Semana 14- 30

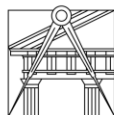


20221215

Tomás Gomes

U LISBOA

UNIVERSIDADE
DE LISBOA



FACULDADE DE ARQUITETURA
UNIVERSIDADE DE LISBOA

ReDig

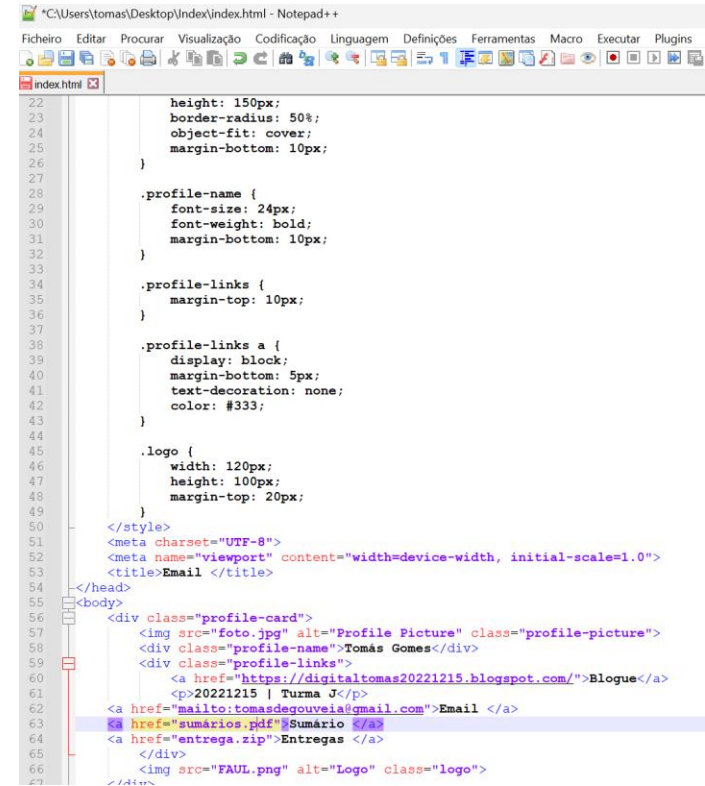
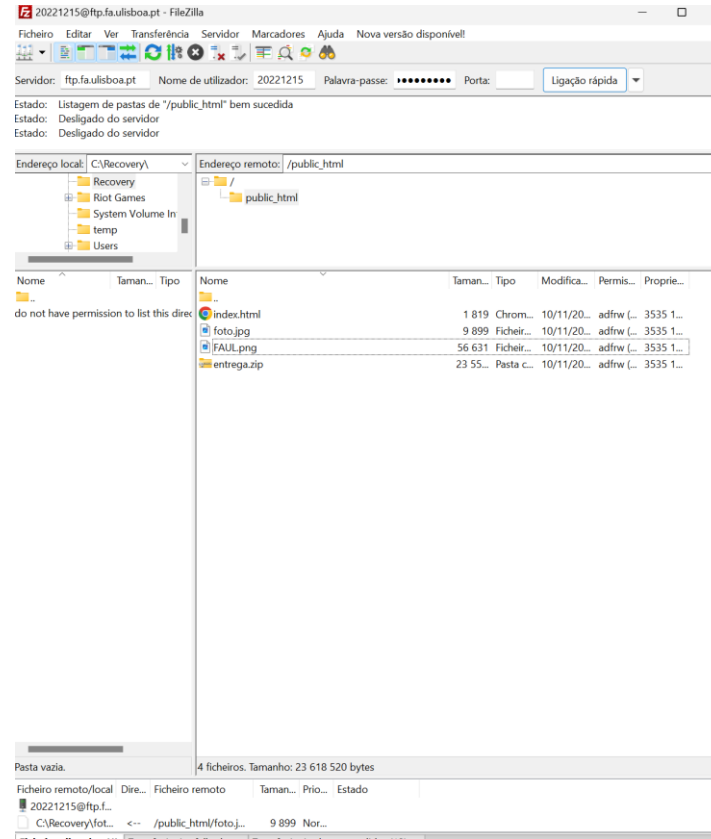


Mestrado Integrado em Arquitetura
Ano Letivo 2023-2024 1º Semestre
Docente – Nuno Alão 2º Ano

Introdução à Unidade Curricular:

Criação do site onde as entregas serão todas postas

- ftp.fa.ulisboa.pt
- N° de aluno
- Palavra-Pass do moodle



ReDig

Semana 1



Tomás Gomes

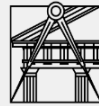
Blogue

20221215 | Turma J

Email

Sumário

Entregas



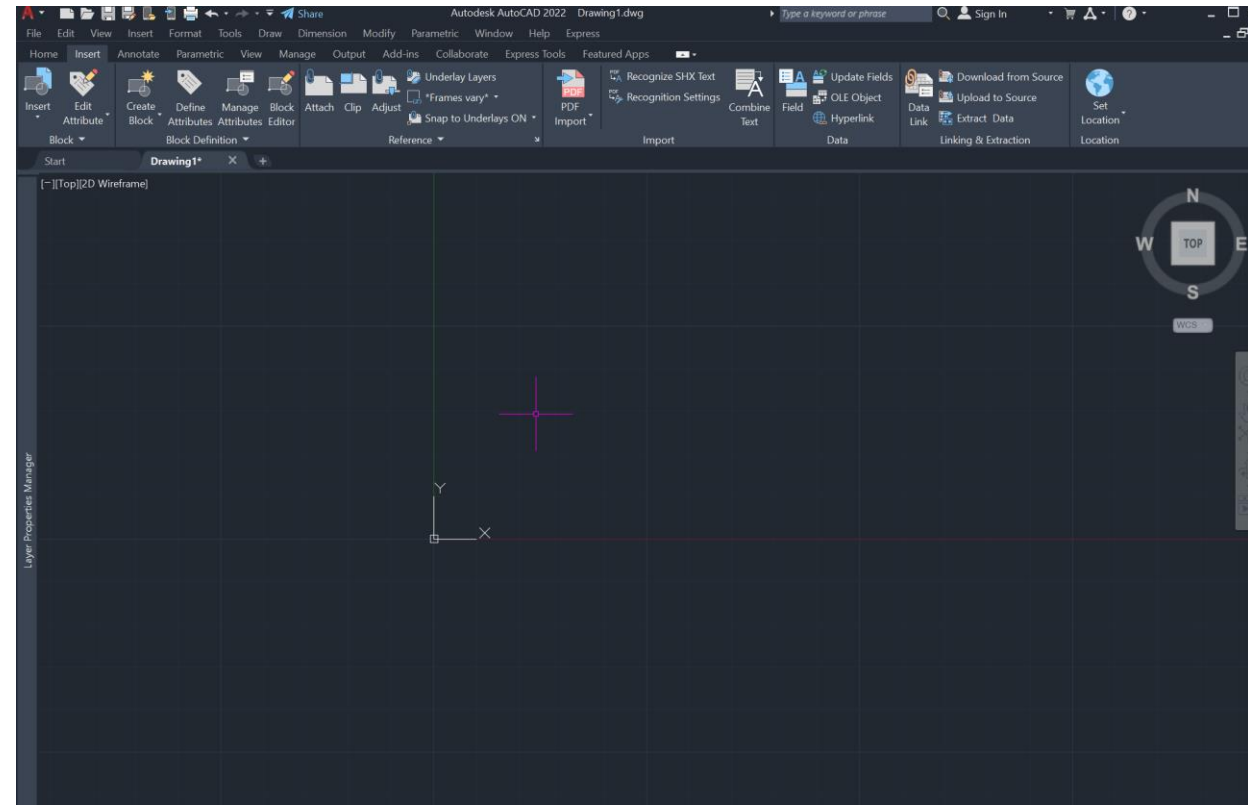
ReDig

Semana 1

AutoCad na Unidade Curricular

Comandos para a utilização do AutoCad:

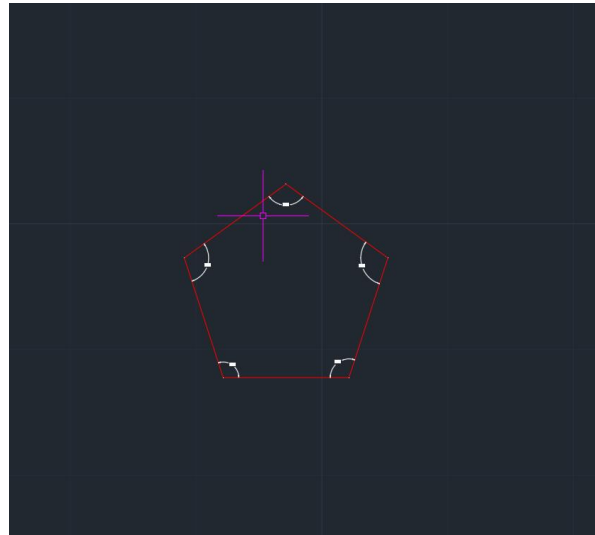
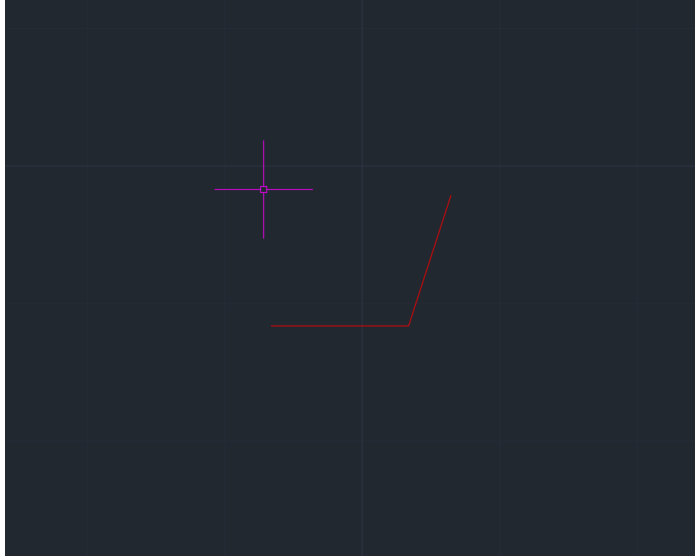
- L = Line
- PL = Polyline
- O = Offset
- CO = Copy
- M = Move
- DI = Dist
- CL = Close
- TR = Trim
- H = Hatch
- E = Erase
- STR = Stretch
- RO = Rotate



ReDig

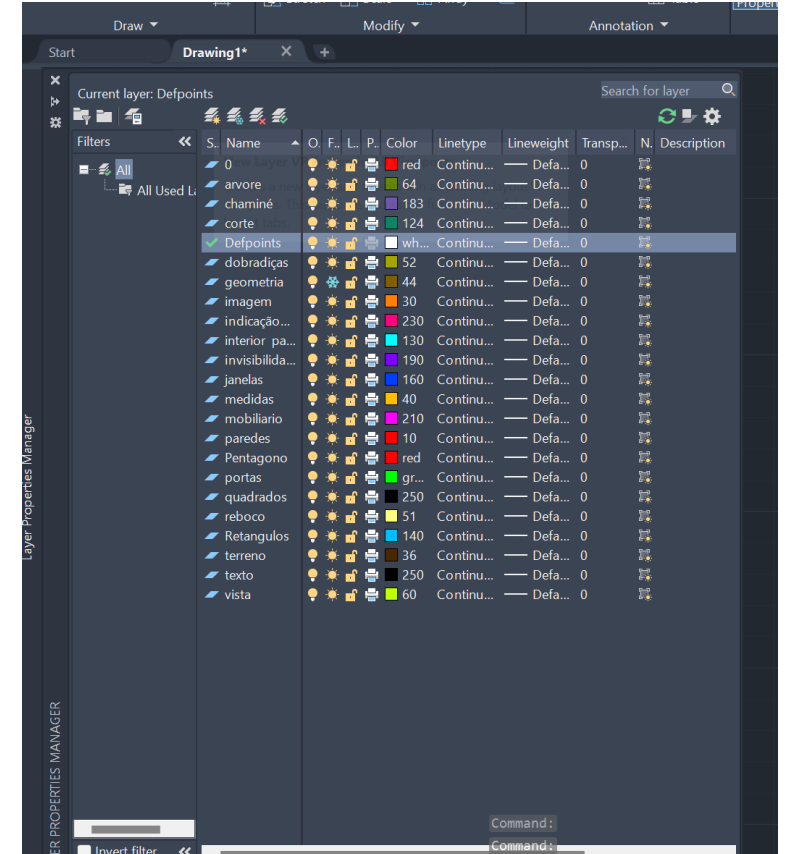
Semana 2

Construção do Pentágono



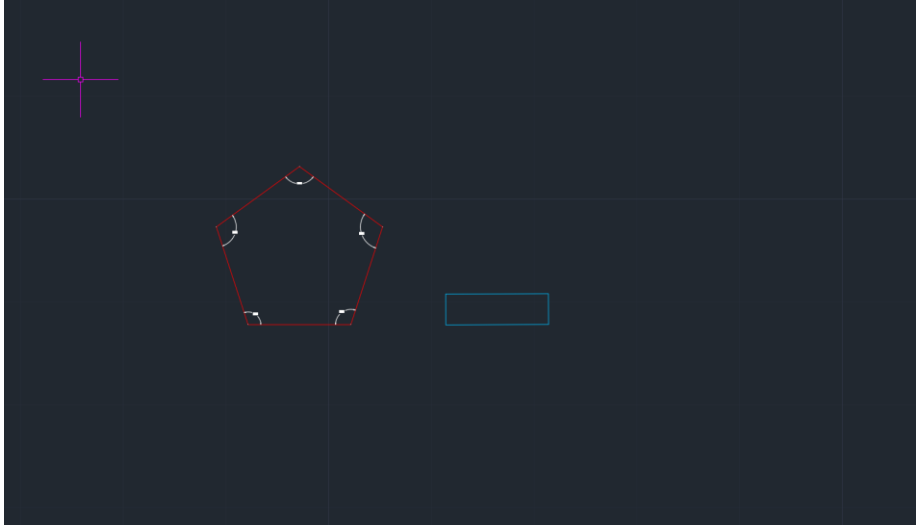
ReDig

Criação de Layers

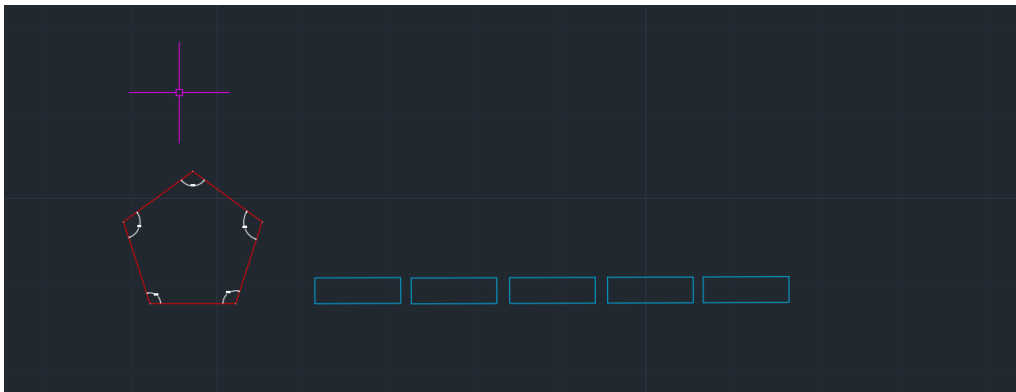


Semana 2

Construção de um retângulo

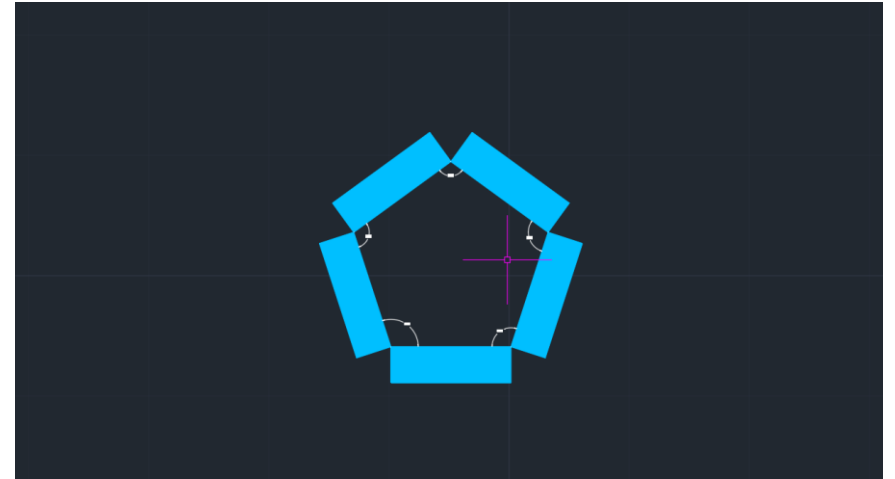


Com o comando COPY fazer mais 4 retângulos



ReDig

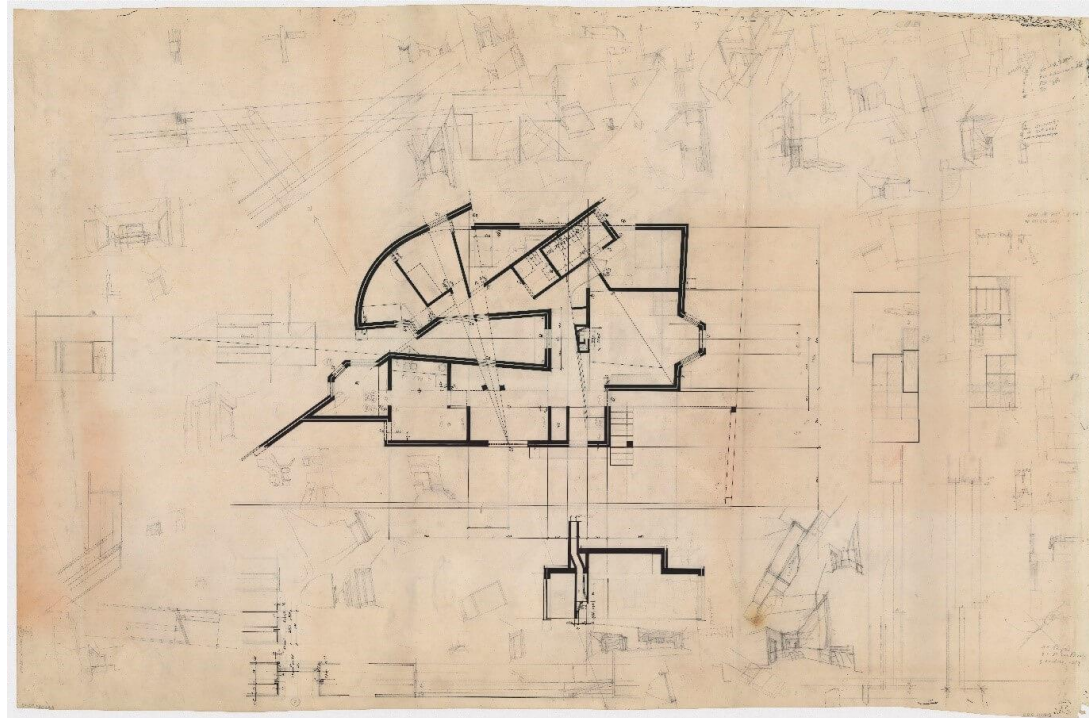
Preencher e colocar os retângulos ao pentágono com o comando HATCH e ROTATE



Semana 2

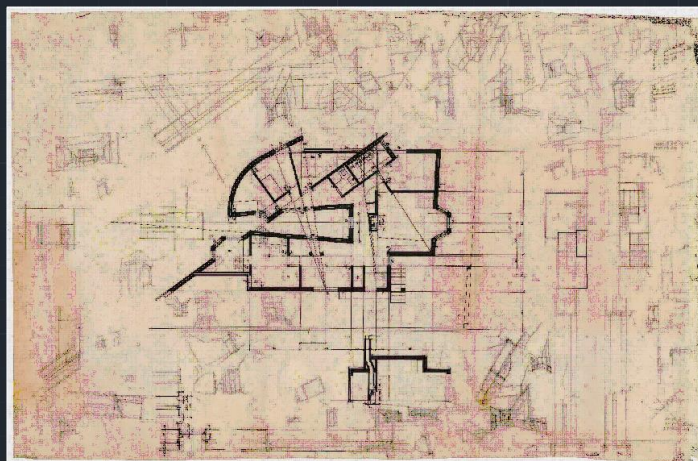
Novo Trabalho

Planta da Casa António Carlos Siza



ReDig

Semana 2



SCALE – Para escalar a imagem da planta através de uma medida geral que no meu caso usei a largura de um dos degraus ou seja 30cm

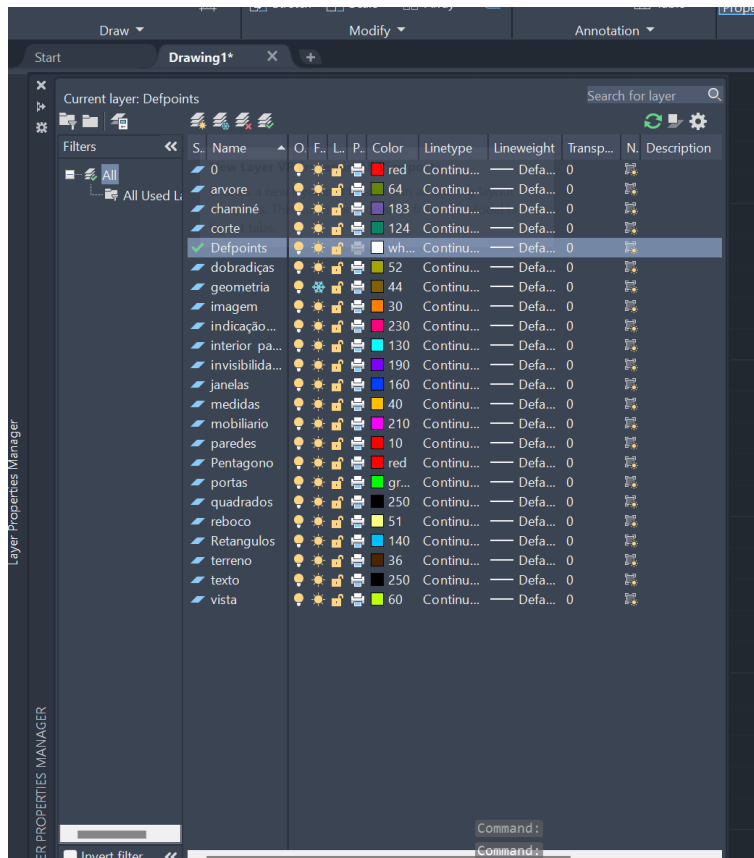
ATTATCH – Para inserir a imagem no autocad

ALIGN – Para alinhar a imagem

ReDig

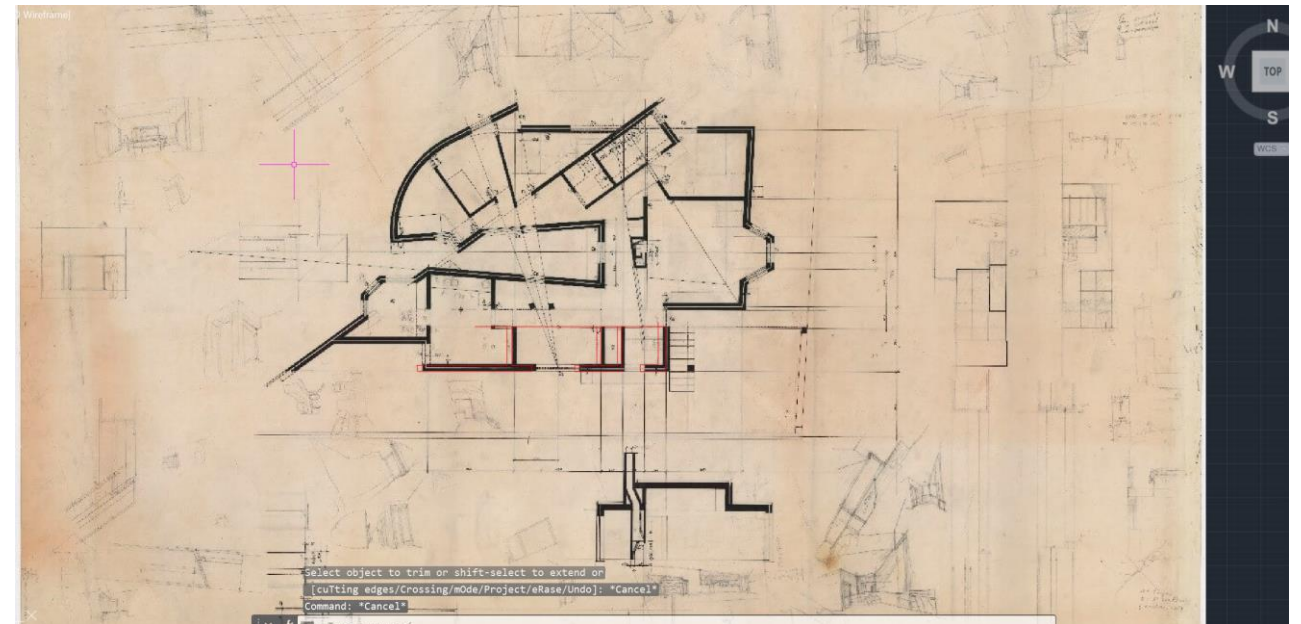
Semana 2

Criação de layers para o trabalho



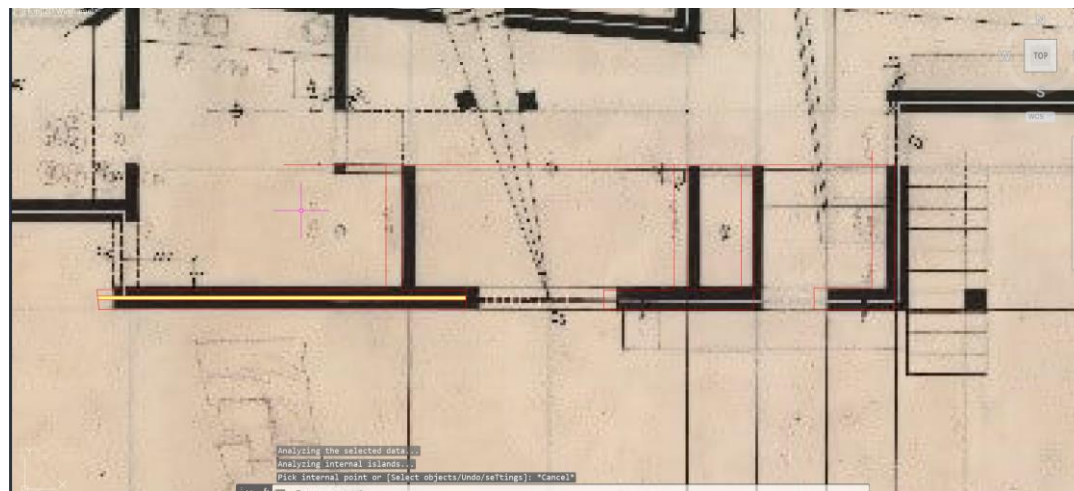
ReDig

Começar a passar por cima da planta à escala 1/100



Semana 2

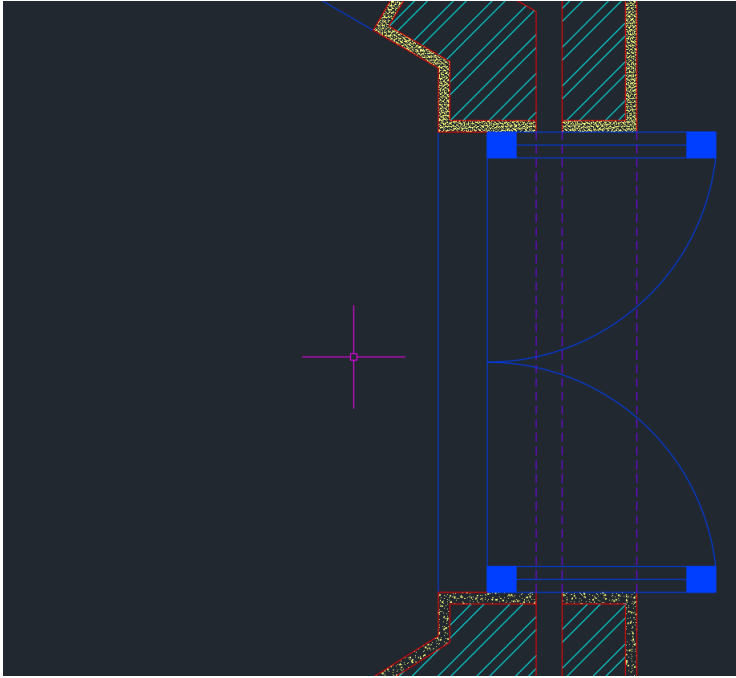
Trabalhar na escala 1/10 sobreposta à escala 1/100



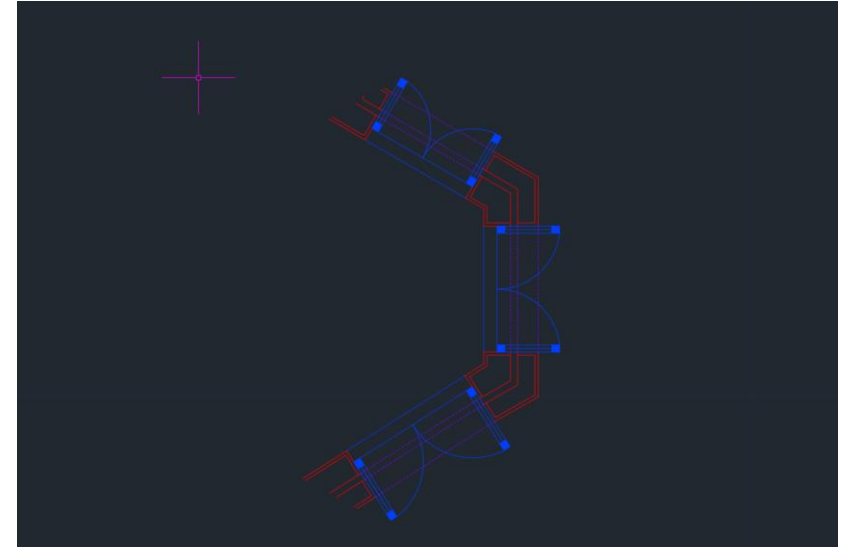
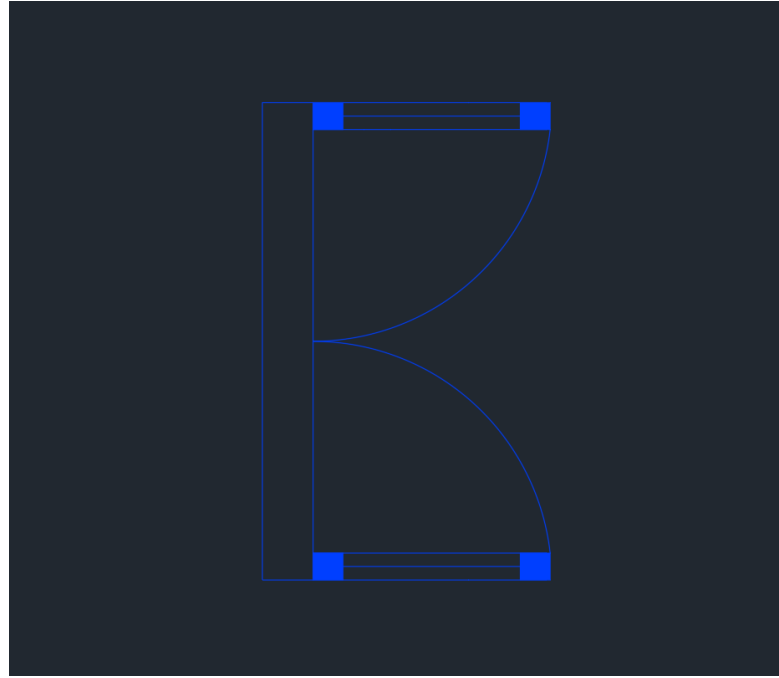
ReDig

Semana 2

Properties – Linhas Invisíveis



Representação das Janelas

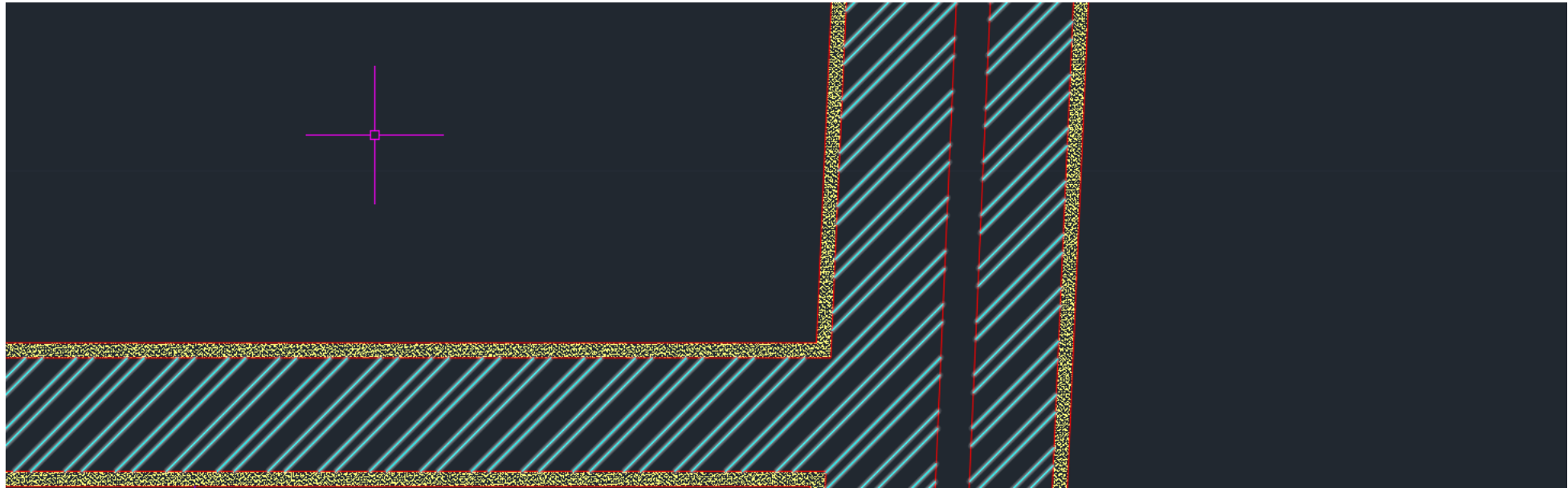


ReDig

Semana 3

Hatch das paredes

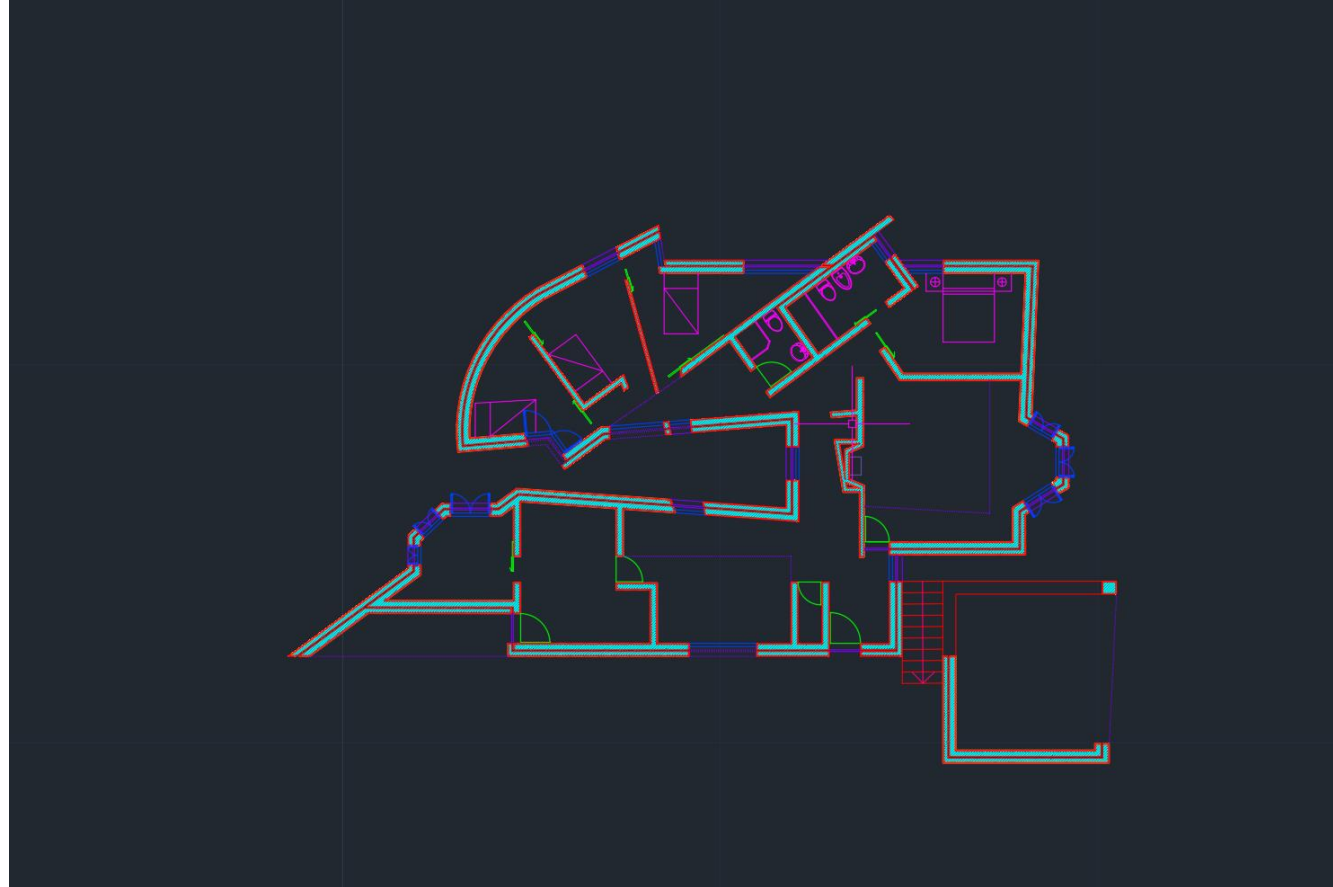
- Ar – Sand (Reboco)
- ANSI32 (Tijolo)



ReDig

Semana 3

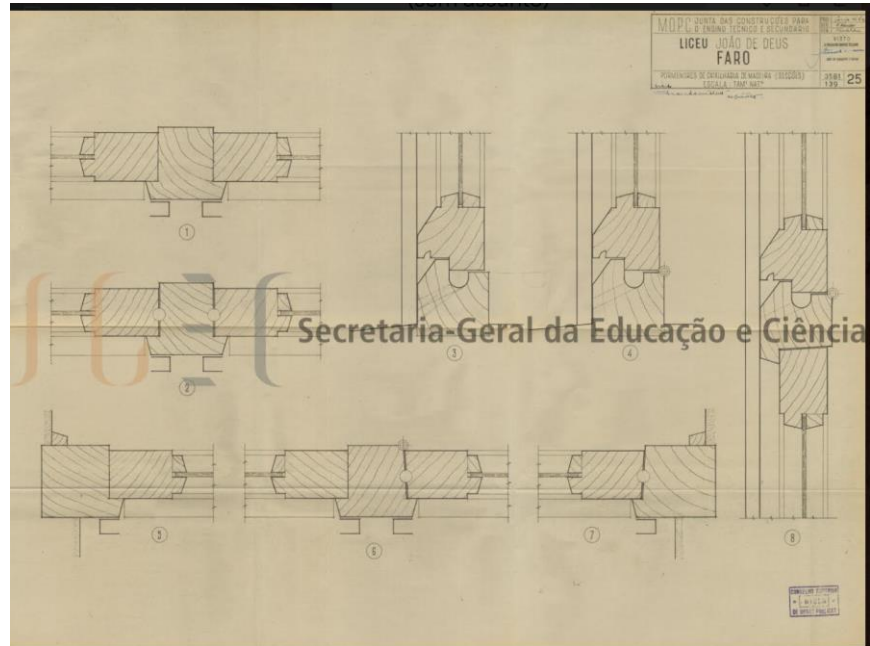
Representação final da Planta



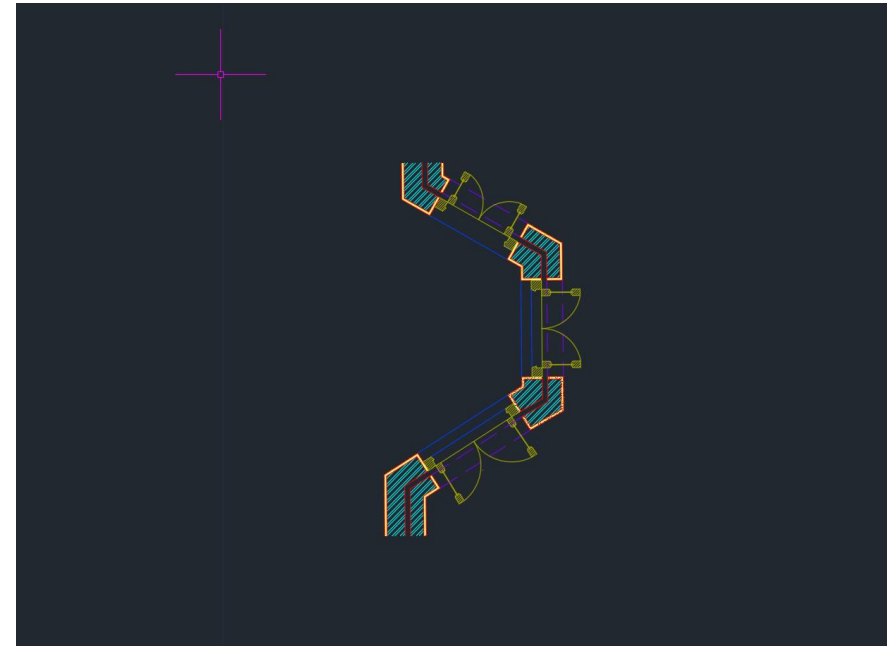
ReDig

Semana 4

Representação do caixilho



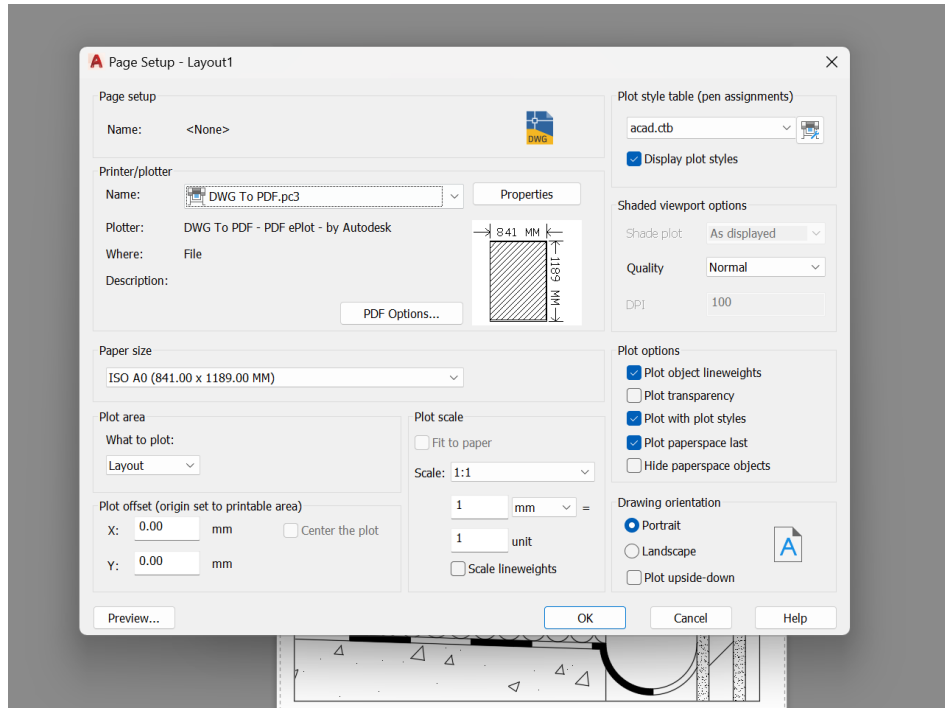
Caixilho no autocad



ReDig

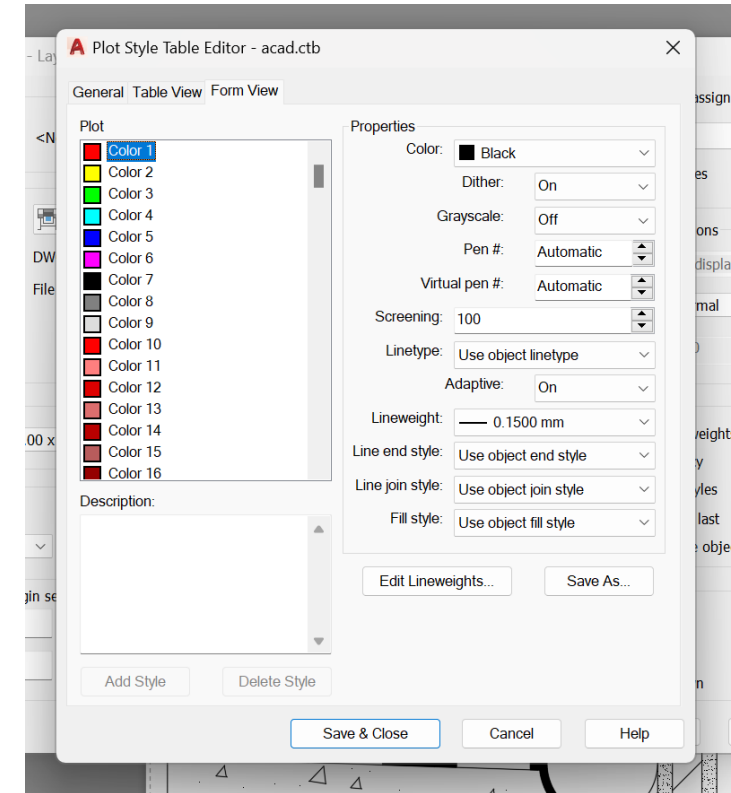
Semana 4

Edição do layout de impressão



ReDig

Canetas de impressão

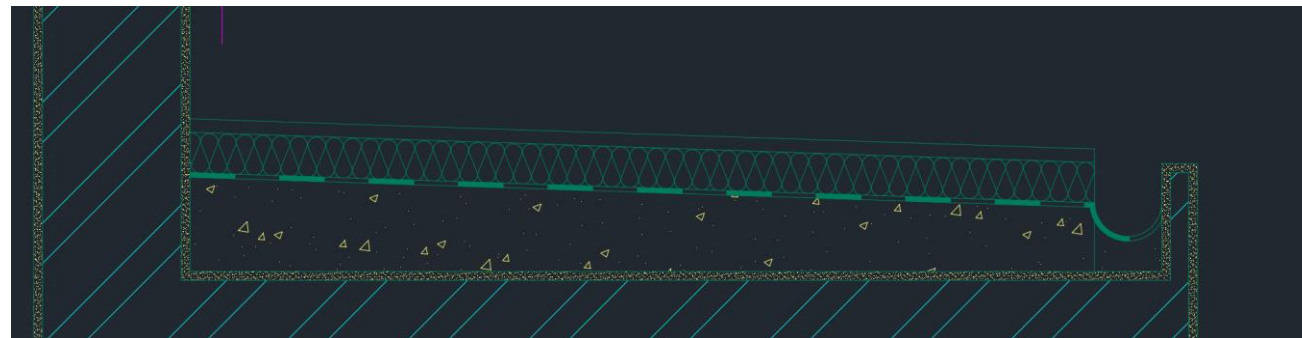


Semana 4

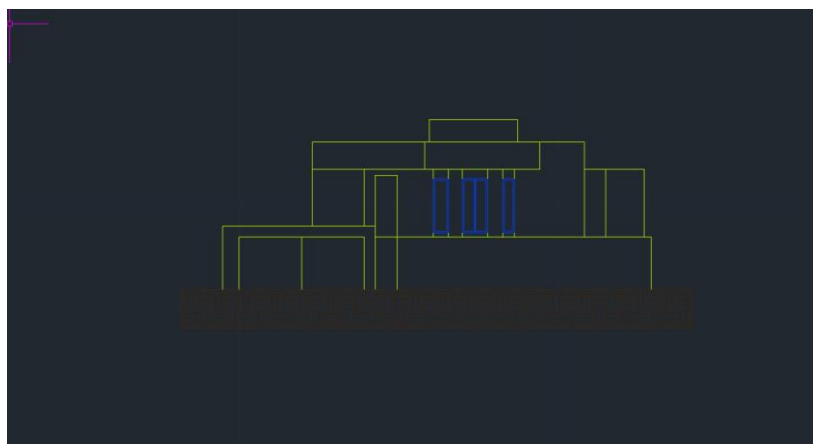
Representação do corte



Representação do pormenor do corte



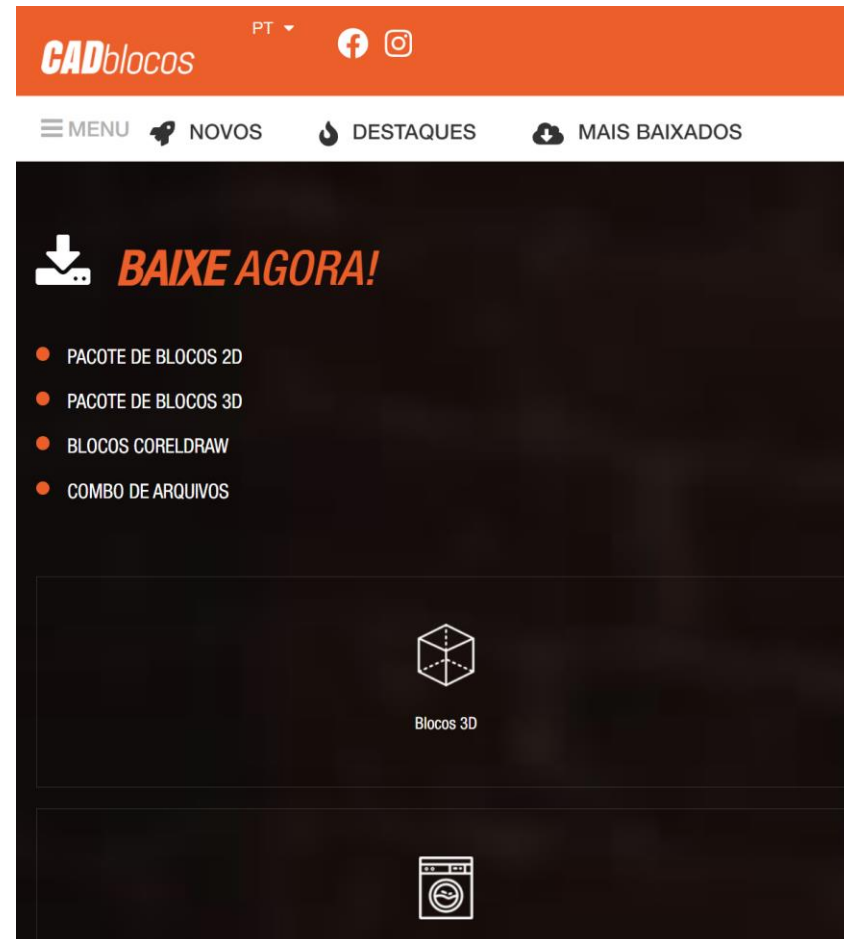
Representação do Alçado



ReDig

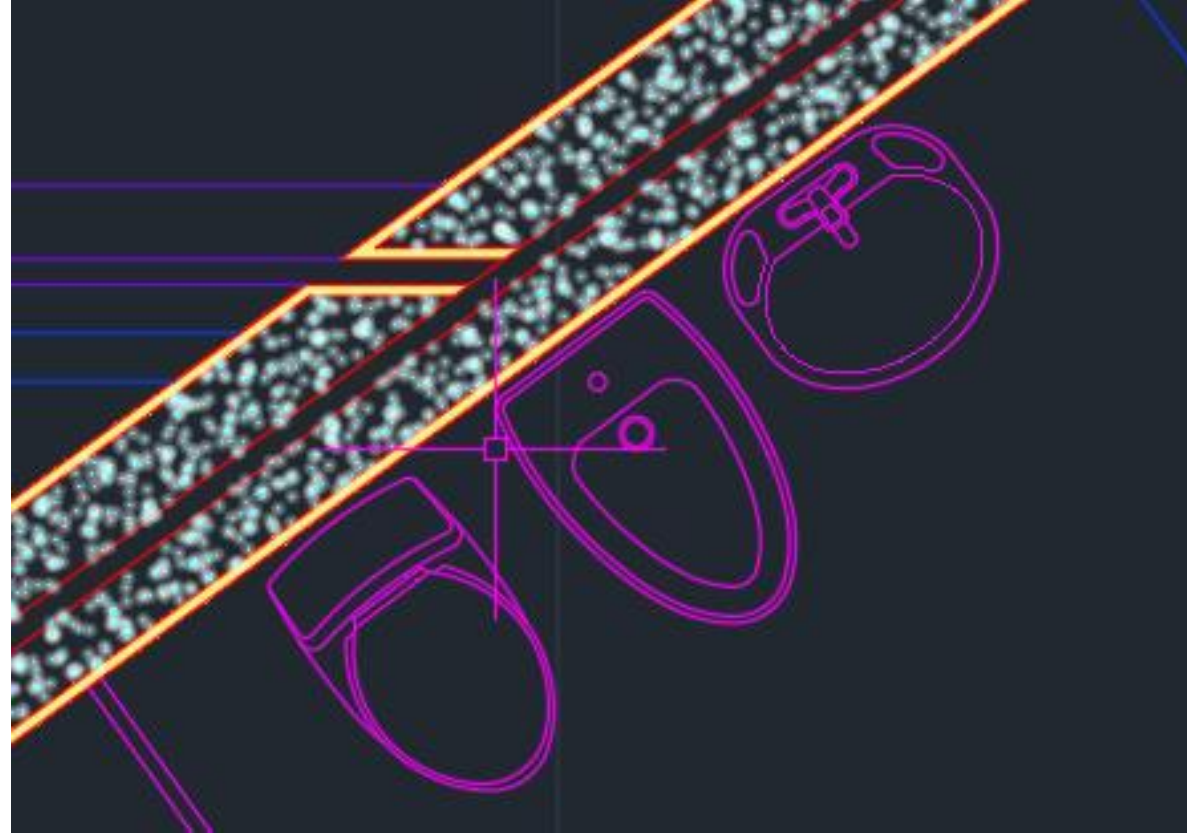
Semana 5

Onde buscar as representações das mobílias para a planta da casa



Usando os blocos cad,
pesquisar e baixar o
que for preciso

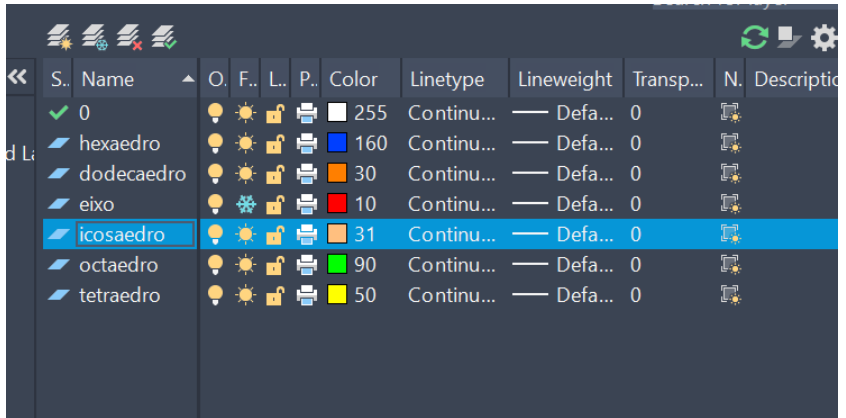
Mobílias



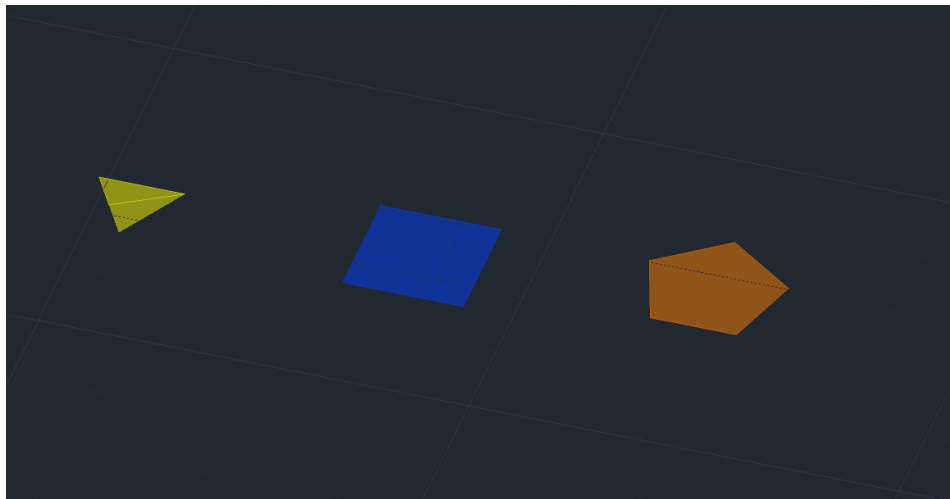
ReDig

Semana 6

Construção de Sólidos



S..	Name	O.	F..	L..	P..	Color	Linetype	Lineweight	Transp...	N.	Descriptio
✓	0	☀	☀	🔒	🖨	255	Continu...	— Defa...	0		
✓	hexaedro	☀	☀	🔒	🖨	160	Continu...	— Defa...	0		
✓	dodecaedro	☀	☀	🔒	🖨	30	Continu...	— Defa...	0		
✓	eixo	☀	☀	🔒	🖨	10	Continu...	— Defa...	0		
✓	icosaedro	☀	☀	🔒	🖨	31	Continu...	— Defa...	0		
✓	octaedro	☀	☀	🔒	🖨	90	Continu...	— Defa...	0		
✓	tetraedro	☀	☀	🔒	🖨	50	Continu...	— Defa...	0		



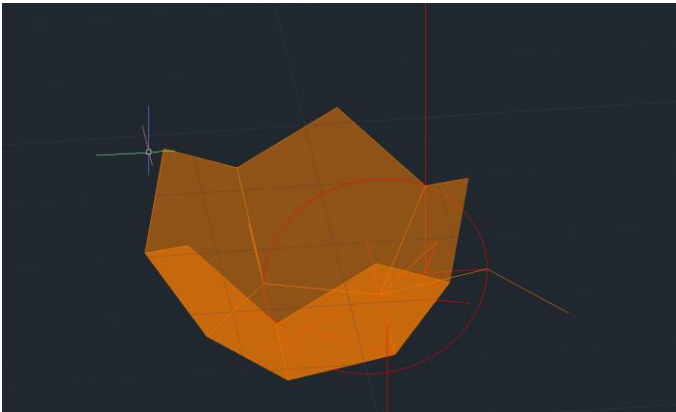
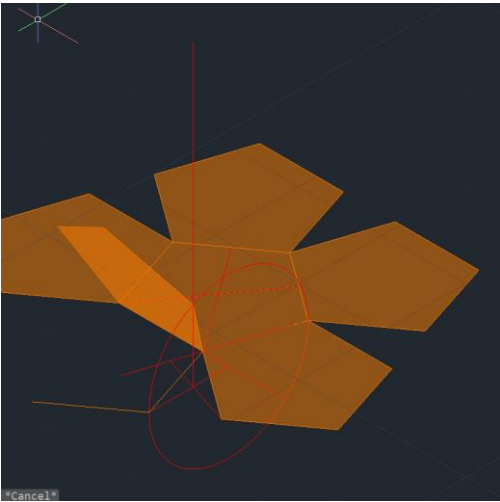
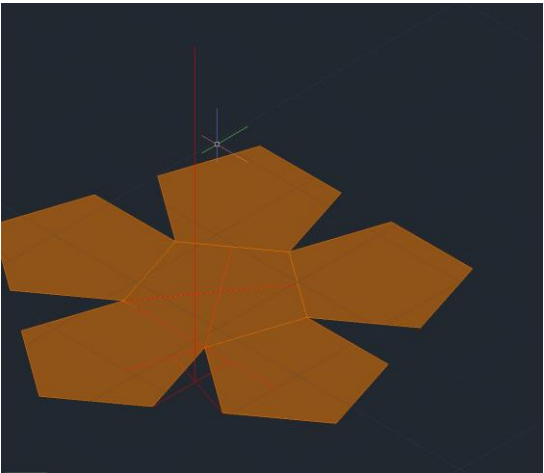
Novos comandos:

- 3DRotate
- Array
- 3DMirror

ReDig

Semana 7

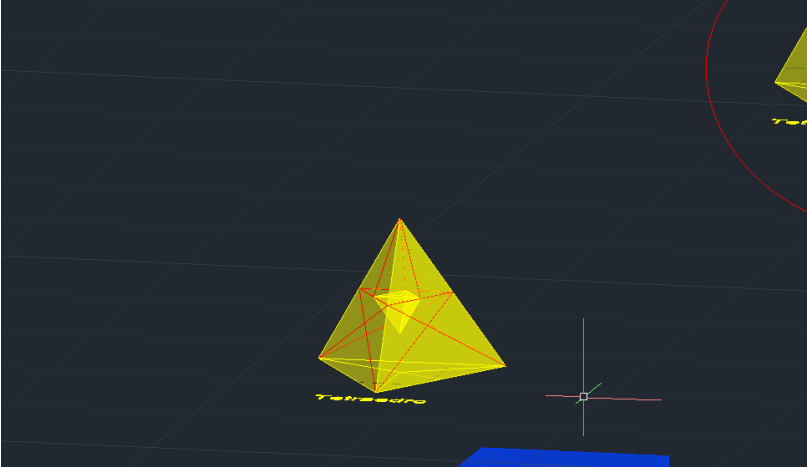
Construção de Sólidos



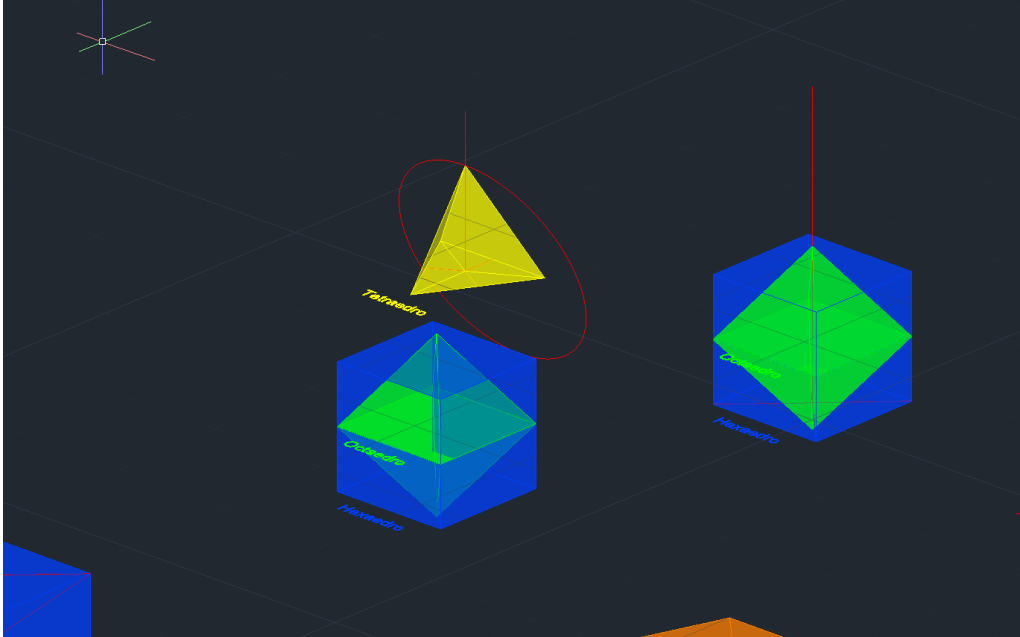
ReDig

Semana 7

Construção de Sólidos

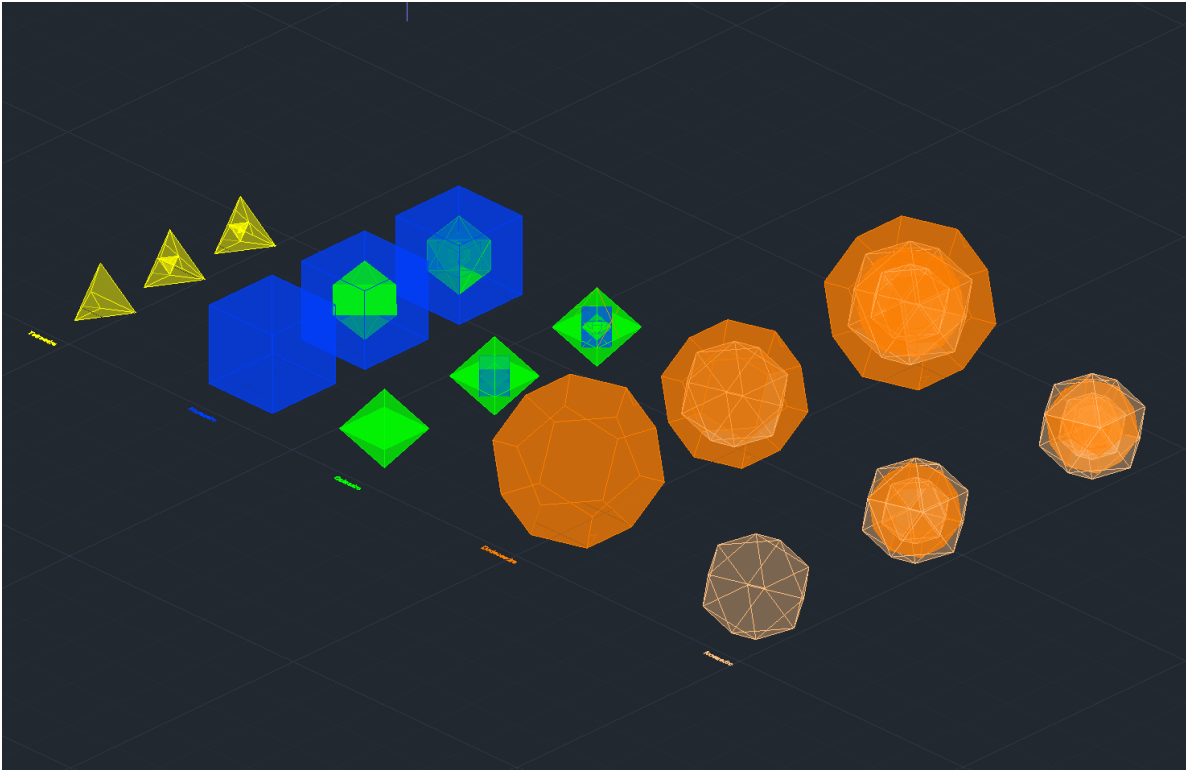


ReDig



Semana 8

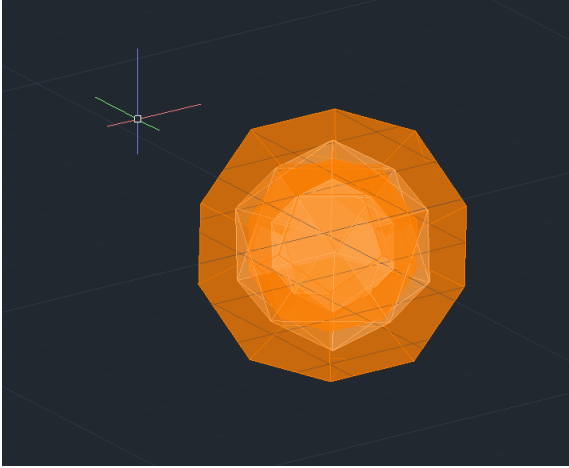
Construção de Sólidos



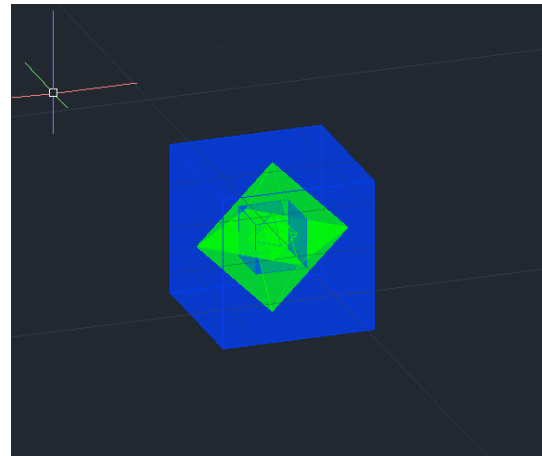
ReDig

Semana 8

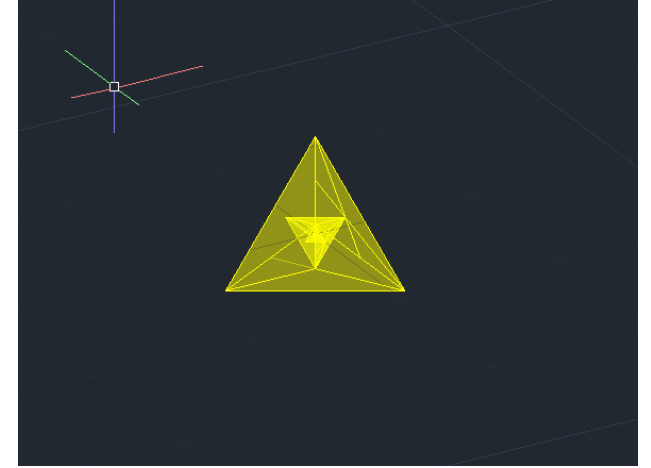
Construção de Sólidos



Dual Dodecaedro/Icosaedro



Dual Hexaedro/Octaedro



Dual Tetraedro

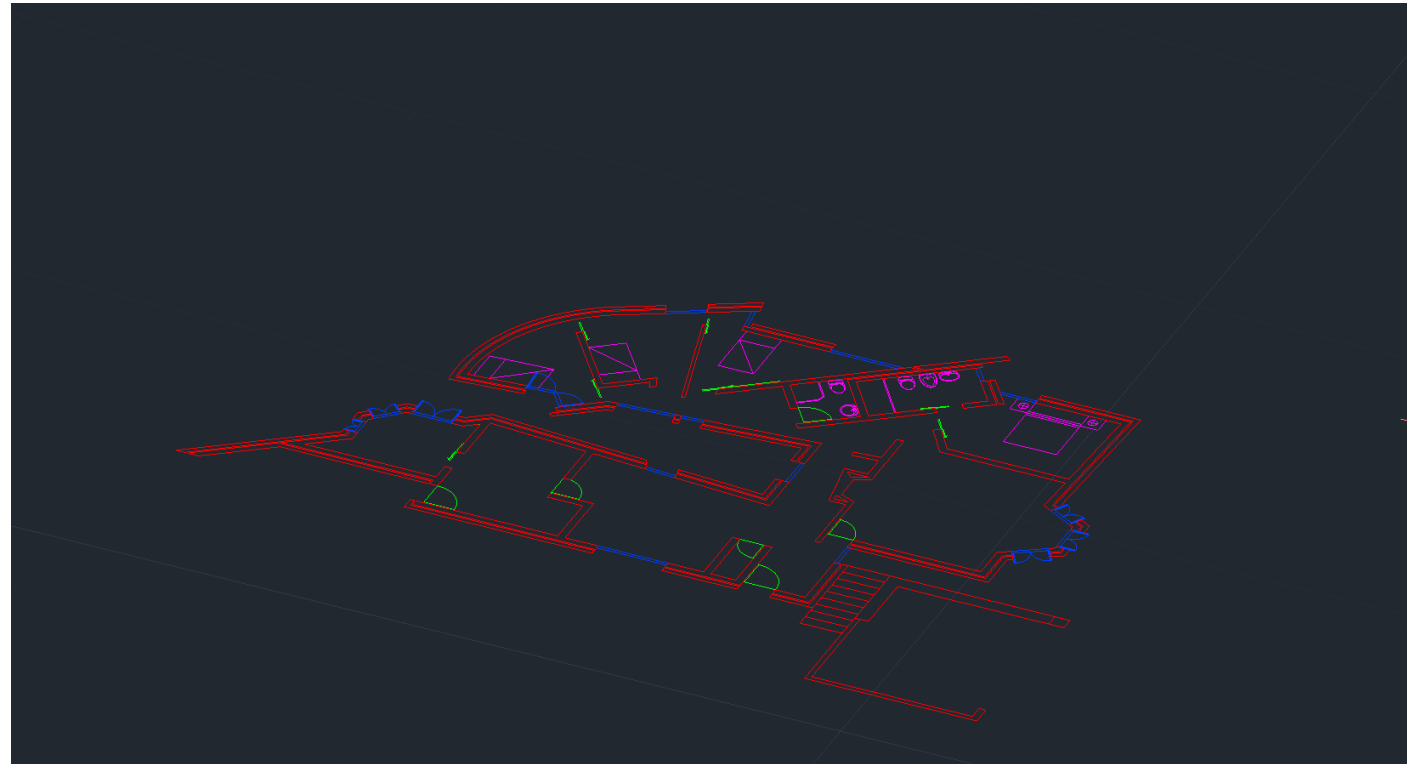
ReDig

Semana 9

Extrude na planta António Carlos Siza Viera

Comandos:

- Extrude ou PressPull



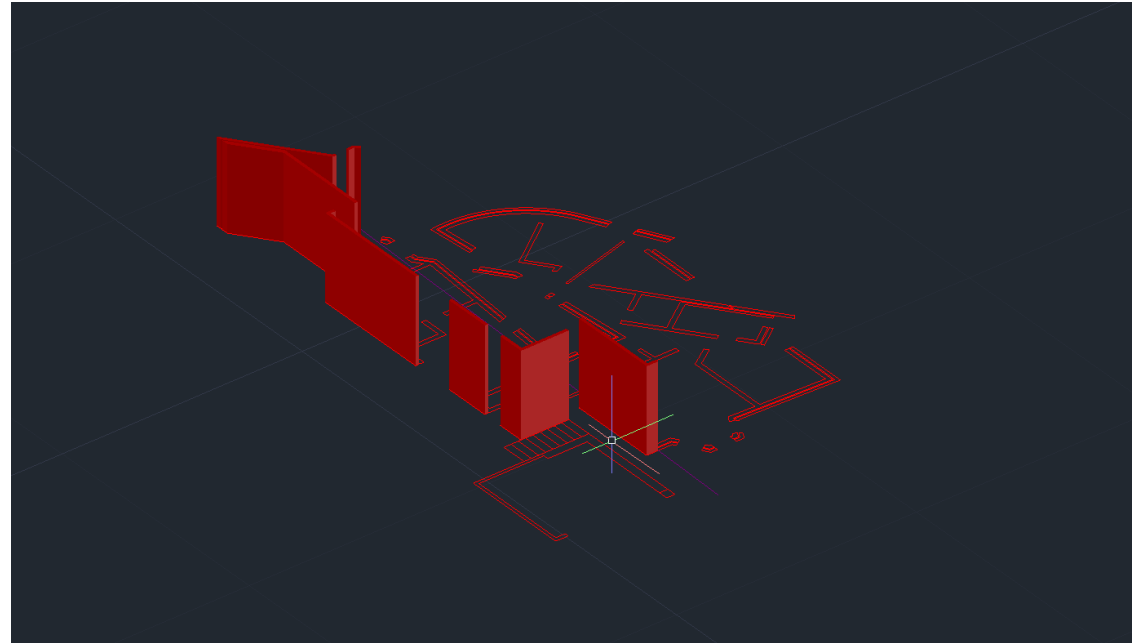
ReDig

Semana 10

Extrude na planta António Carlos Siza Viera

Comandos:

- Extrude ou PressPull



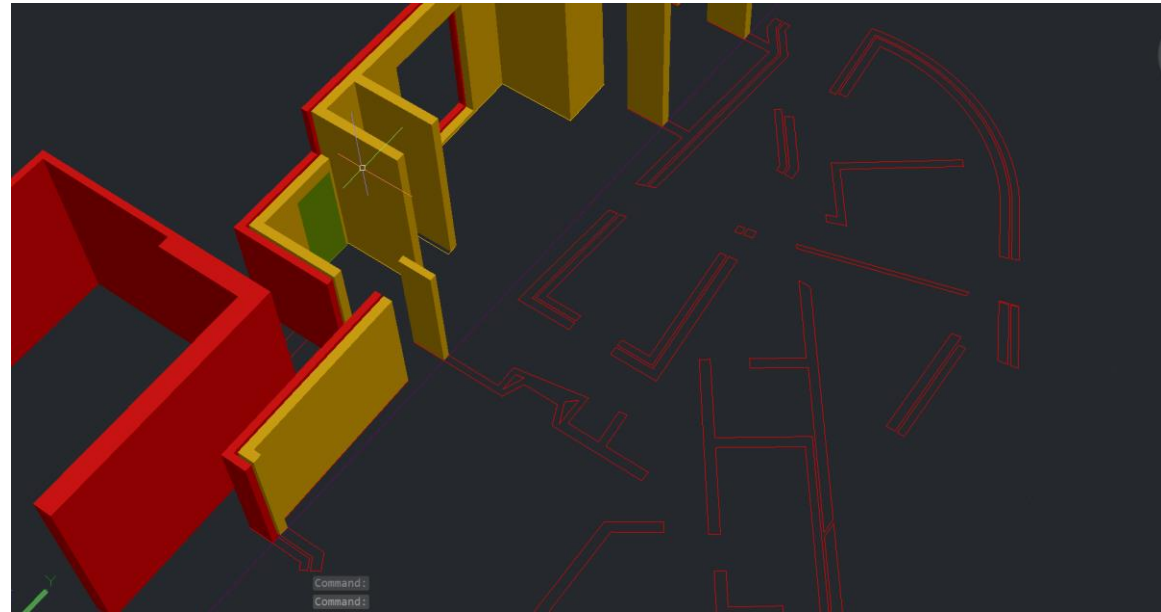
ReDig

Semana 11

Extrude na planta António Carlos Siza Viera

Comandos:

- Extrude ou PressPull



ReDig

Semana 12

Extrude na planta António Carlos Siza Viera 3Dmax

Introdução ao 3Dmax



Produtos ▾ Suporte ▾ Informações ▾ Comunidade ▾

3 3ds Max

Autodesk 3ds Max: crie mundos em grande escala e projetos de alta qualidade

Modelação e renderização em formato 3D de grande impacto visual.

Imagem cedida por Alex Nice

[Transferir versão experimental gratuita](#)

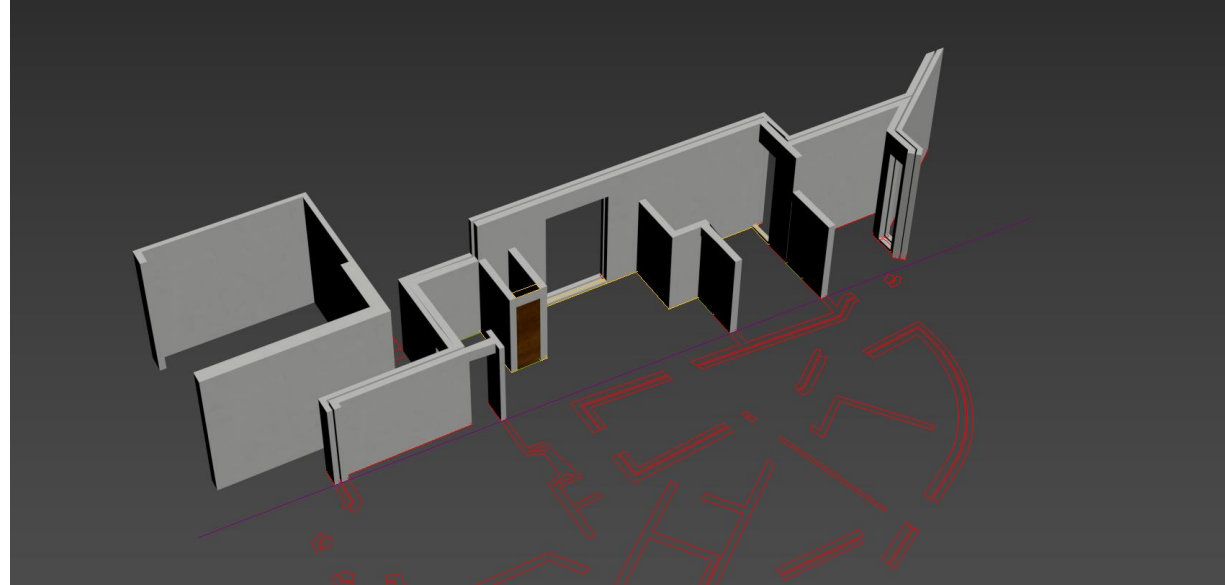
[Converse com a nossa equipa de vendas. +351 30 880 3777](#)

ReDig

Semana 13

Extrude na planta António Carlos Siza Viera 3Dmax

Passar planta da casa
para 3dmax



ReDig

Semana 14