

Representação Digital

2023-2024



UNIVERSIDADE
DE LISBOA



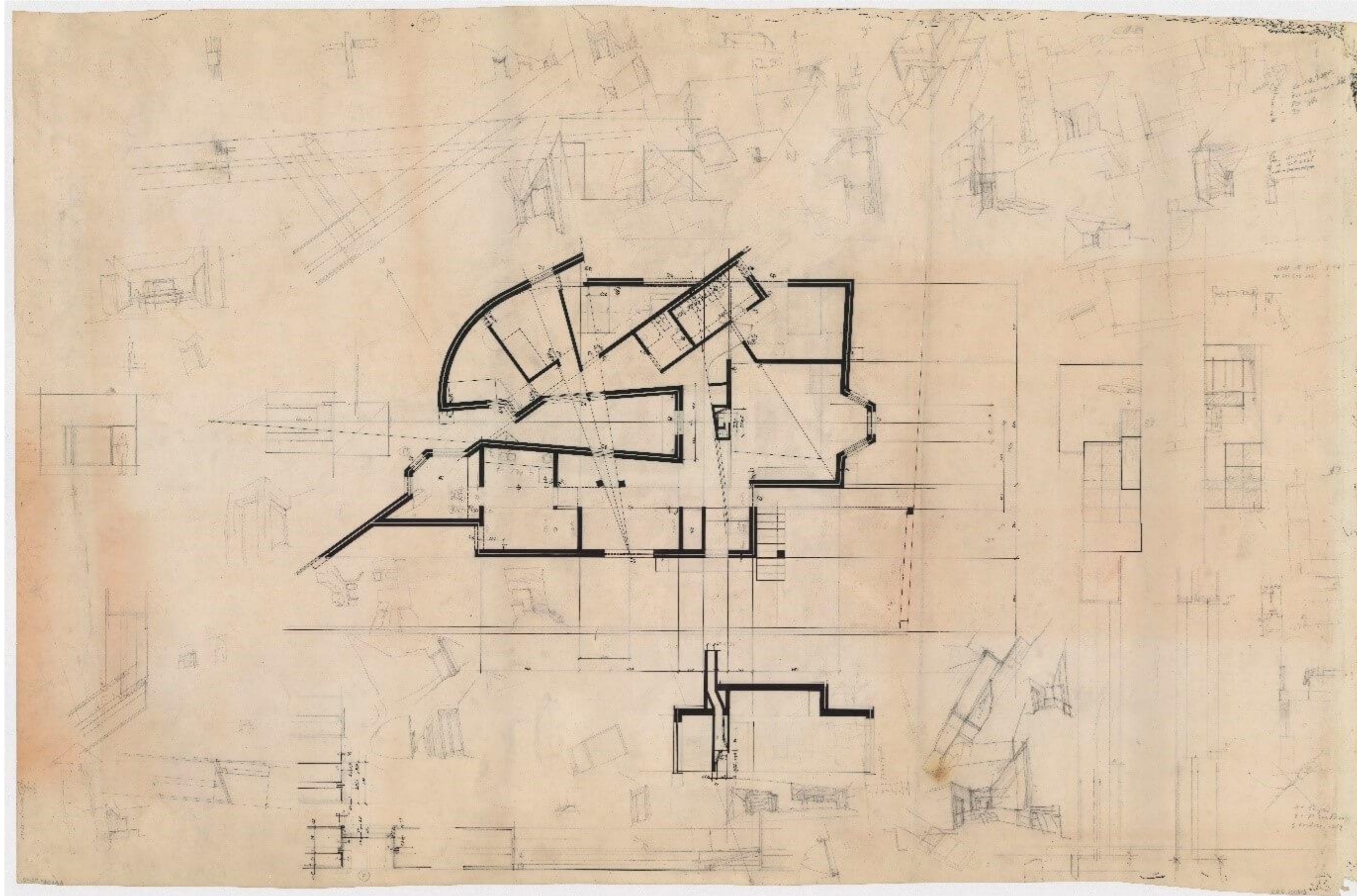
FACULDADE DE ARQUITETURA
UNIVERSIDADE DE LISBOA

Mestrado Integrado em Arquitectura
Ano Lectivo 2023-2024 1º Semestre
Docente - Nuno Alão 2º Ano

20211439

DIOGO FAGULHA





ReDig

Exerc. 1.1 – ACAD 2D


 Servidor: ftp.fa.ulisboa.pt Nome de utilizador: 20211439 Palavra-passe: ●●●●●●●● Porta: Ligação rápida ▼

Estado: Transferência bem sucedida, tranferidos 1 432 bytes in 1 segundo

Estado: Desligado do servidor

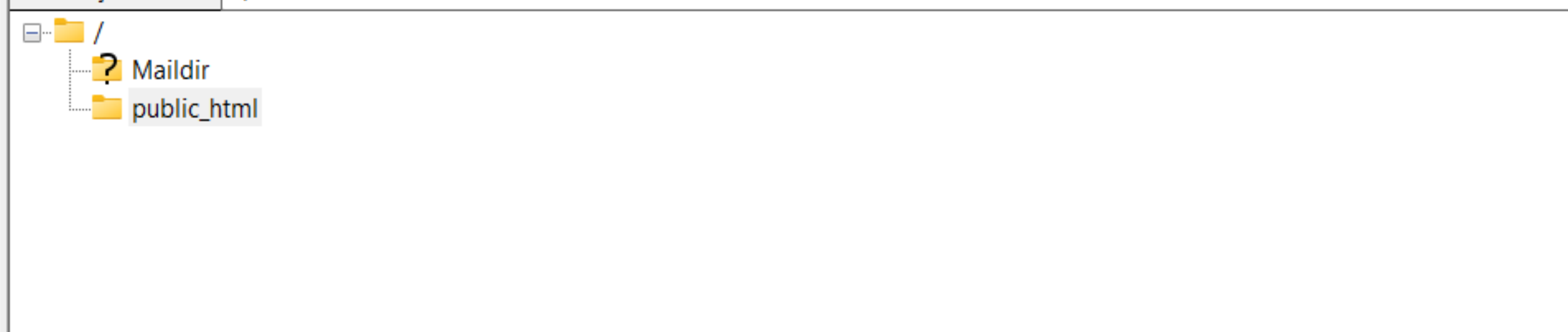
Estado: Ligação terminada pelo servidor

Estado: Ligação terminada pelo servidor

20211439@ftp.fa.ulisboa.pt × 20211439@ftp.fa.ulisboa.pt ×

Endereço local: C:\Users\fagul\OneDrive\Ambiente de Trabalho\2º ANO\

Endereço remoto: /public_html



Nome	Tamanho	Tipo	Modificado
..			
CULTURA		Pasta de fichei...	27/10/2023 08:...
FISICA E NOVOS M...		Pasta de fichei...	28/09/2023 15:...
MATEMATICA		Pasta de fichei...	20/10/2023 09:...
PROJETO 3		Pasta de fichei...	26/10/2023 19:...
REPRESENTAÇÃO		Pasta de fichei...	10/11/2023 09:...

5 pastas

Nome	Tamanho	Tipo	Modificado	Permissõ...	Proprietá...
..					
foto01.jpg	237 061	Ficheiro ...	10/11/2023...	adfrw (0...	2562 1003
index.html	1 432	htmlfile			
site alão .html	1 459	htmlfile	20/10/2023...	adfrw (0...	2562 1003

3 ficheiros. Tamanho: 239 952 bytes

Ficheiro remoto/local	Direc...	Ficheiro remoto	Tamanho	Priori...	Estado

Ficheiros listados Transferências falhadas (1) Transferências bem sucedidas (2)



```
</title>
```

```
background-color:#B0E0E6
```

```
font-family: Arial, monospace;
```

```
body {  
font-family: Arial, sans-serif;
```

```
color:#008B8B ;  
text-align: left;  
font-family: arial, sans-serif;  
font-size: 35px;
```

```
color: black;  
text-align: center;  
font-family: arial, sans-serif;  
font-size: 15px;
```

```
<link type="text/css" rel="stylesheet" href="estilos.css">
```

```
<img alt="foto" style="position:absolute; left:1050px; width:430px; height:50px; z-index:0 ; margin-left:000px;margin-bottom: 250px">
```

```
</div>  
<div style="border: 1px solid black; padding: 5px; width: 300px; height: 450px; margin-left: 200px;">
```

```
<a href="http://www.fa.ulisboa.pt/">Faculdade de Arquitetura - ULisboa </a>
```

```
<a href="http://home.fa.ulisboa.pt/~nunoalao"> Representação Digital </a>
```



```
55 <font color=#008B8B> <i>20211439
56 <br>
57 ARQ 2<sup>ordm</sup>; Turma E
58 <h3>
59
60
61 <br><br><br><br><br><br><br><br><br><br><br><br><br><br>
62
63 <hr>
64 <footer>
65 <a href="diariogrrafico.pptx"> Di<sup>a</sup>cuterio Gr<sup>a</sup>cutefico </a>
66 <br><br>
67 <a href="Entregas.html"> Entregas </a>
68 <br><br>
69 <a href="mailto: fagulhadiogo13@gmail.com"> Contacto </a>
70 </footer>
71
72 </body>
73
74
```

Home Insert Annotate Parametric View Manage Output Add-ins Collaborate Express Tools Featured Apps

Line Polyline Circle Arc Move Rotate Trim Copy Mirror Fillet Stretch Scale Array Text Dimension Layer Properties Layers Insert Match Properties Groups Measure Paste Base

[-][Top][2D Wireframe]

Orthomode
ângulos de 90° e linhas
retas verticais ou horizontais

Copy + Rotate

Hatch solid

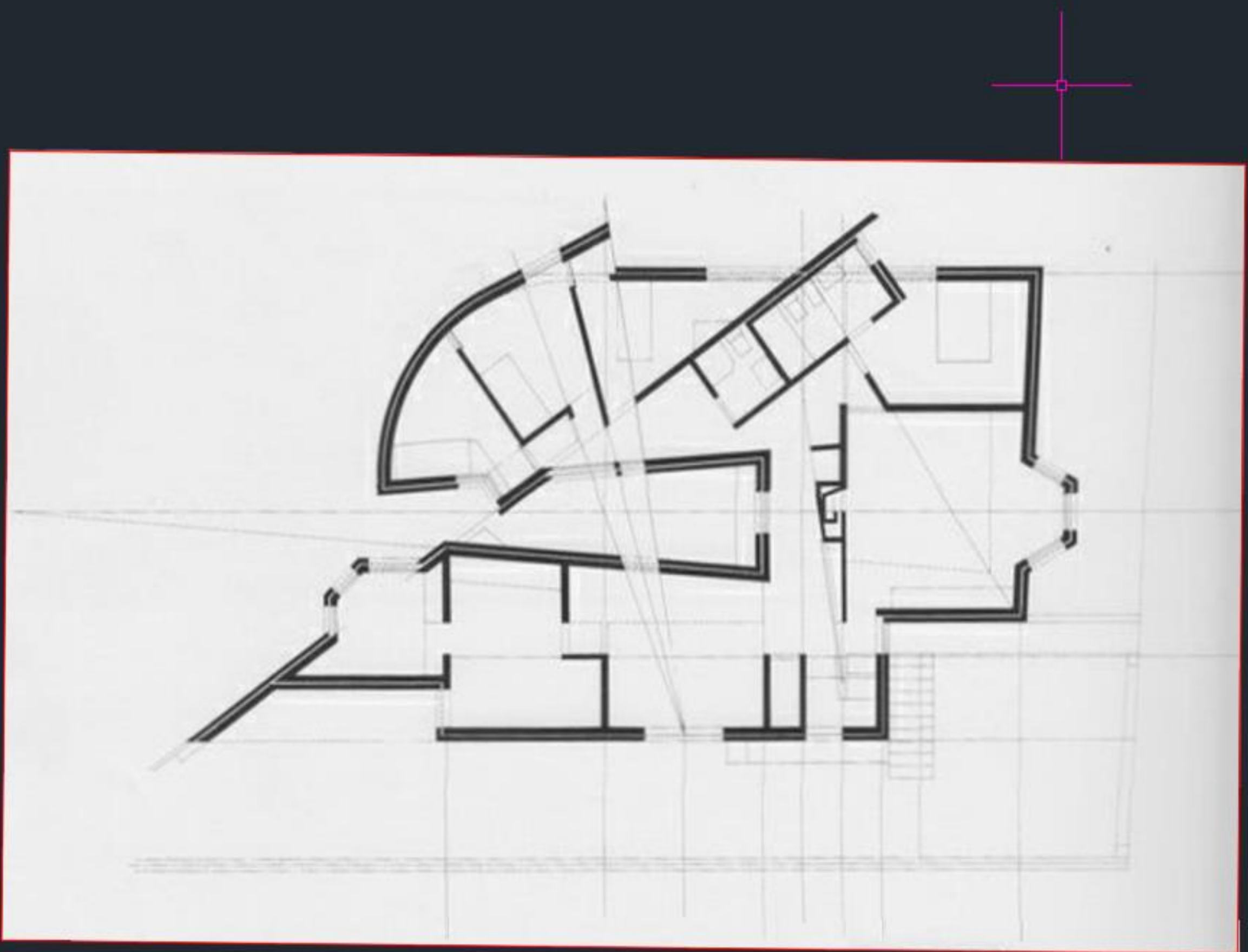
Command: <Object Snap Tracking on>
Command: <Object Snap Tracking off>

LAYER PROPERTIES MANAGER

S...	Name	O...	F...	L...	P...	Color	Linety
0	0	Light	On	Lock	Print	White	Conti
alçados	alçados	Light	On	Lock	Print	Green	Conti
cortes	cortes	Light	On	Lock	Print	Blue	Conti
Defpoints	Defpoints	Light	On	Lock	Print	White	Conti
exterior	exterior	Light	On	Lock	Print	Brown	Conti
geometria	geometria	Light	On	Lock	Print	Grey	Conti
hatch	hatch	Light	On	Lock	Print	Magenta	Conti
inv. 10	inv. 10	Light	On	Lock	Print	Magenta	ACAD
invisiblid...	invisiblid...	Light	On	Lock	Print	Cyan	ACAD
paredes 10	paredes 10	Light	On	Lock	Print	Yellow	Conti
paredes 100	paredes 100	Light	On	Lock	Print	Yellow	Conti
texto	texto	Light	On	Lock	Print	Black	Conti
TOP	TOP	Light	On	Lock	Print	White	Conti
Vão 10	Vão 10	Light	On	Lock	Print	Red	Conti
Vão 100	Vão 100	Light	On	Lock	Print	Red	Conti
vista 10	vista 10	Light	On	Lock	Print	Red	Conti
vista 100	vista 100	Light	On	Lock	Print	Red	Conti

All Used Layers: 17 layers displayed of 17 total

[-] [Top] [2D Wireframe]



LAYER PROPERTIES MANAGER

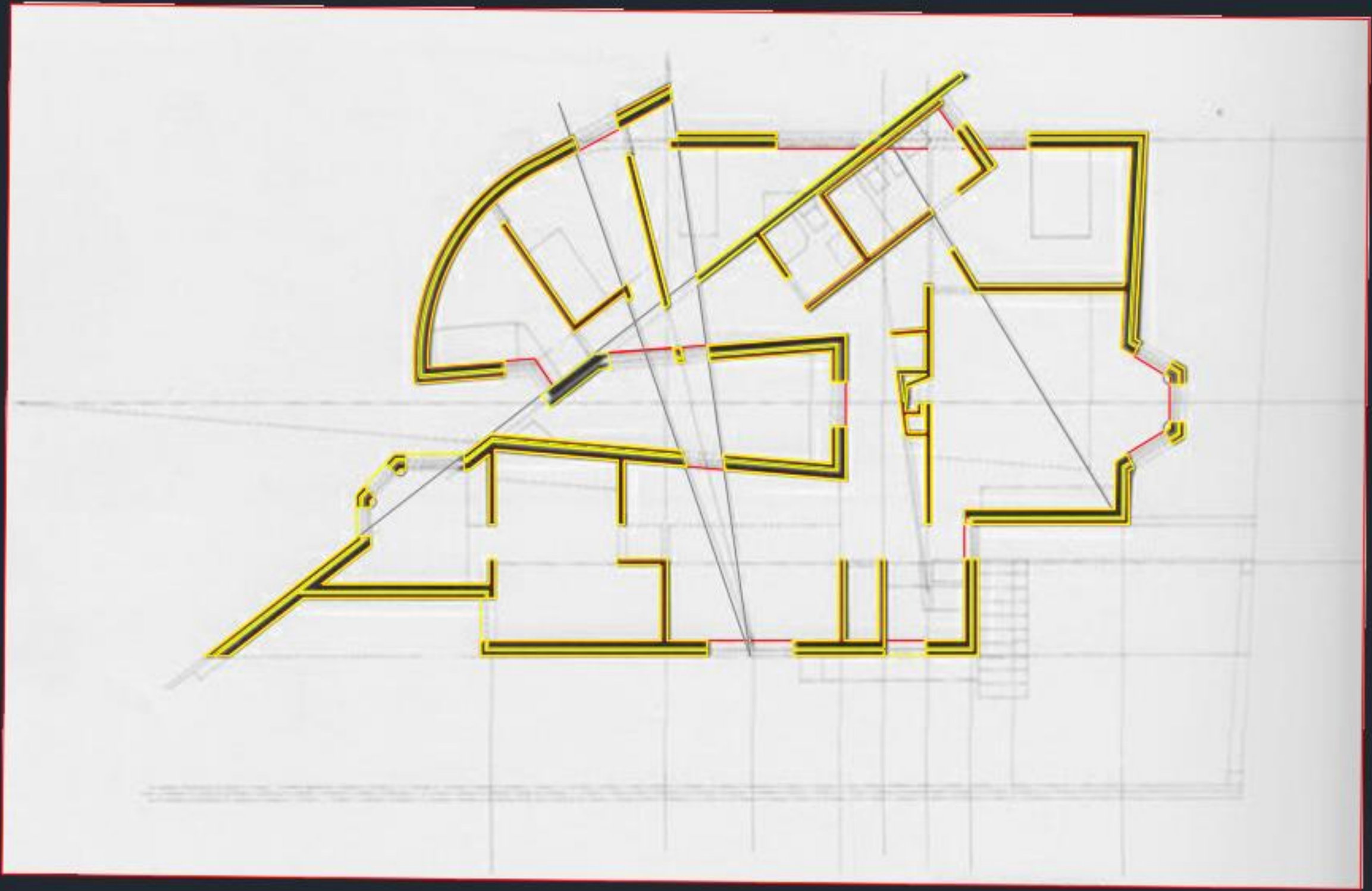
Current layer: texto Search for layer

S...	Name	O...	F...	L...	P...	Color	Linety
0	0	Light	On	Lock	Print	wh...	Conti
Defpoints	Defpoints	Light	On	Lock	Print	wh...	Conti
geometria	geometria	Light	On	Lock	Print	8	Conti
hatch	hatch	Light	On	Lock	Print	30	Conti
inv. 10	inv. 10	Light	On	Lock	Print	ma...	ACAD
invisibla...	invisibla...	Light	On	Lock	Print	ma...	ACAD
paredes 10	paredes 10	Light	On	Lock	Print	50	Conti
paredes 100	paredes 100	Light	On	Lock	Print	yel...	Conti
texto	texto	Light	On	Lock	Print	30	Conti
Vão 10	Vão 10	Light	On	Lock	Print	red	Conti
Vão 100	Vão 100	Light	On	Lock	Print	red	Conti
vista 10	vista 10	Light	On	Lock	Print	red	Conti
vista 100	vista 100	Light	On	Lock	Print	red	Conti

Command: *Cancel*
Command: *Cancel*
Command: *Cancel*

Type a command

[-] [Top] [2D Wireframe]



LAYER PROPERTIES MANAGER

Current layer: texto Search for layer

S...	Name	O...	F...	L...	P...	Color	Linety
	0					wh...	Conti
	Defpoints					wh...	Conti
	geometria					8	Conti
	hatch					30	Conti
	inv. 10					ma...	ACAD
	invisiblid...					ma...	ACAD
	paredes 10					50	Conti
	paredes 100					yel...	Conti
✓	texto					30	Conti
	Vão 10					red	Conti
	Vão 100					red	Conti
	vista 10					red	Conti
	vista 100					red	Conti

Home Insert Annotate Parametric View Manage Output Add-ins Collaborate Express Tools Featured Apps

Line Polyline Circle Arc Move Rotate Trim Copy Mirror Fillet Stretch Scale Array Text Dimension Layer Properties Layers Insert Match Properties Groups Measure Paste Base

Draw Modify Annotation Layers Block Properties Groups Utilities Clipboard View

[-][Top][2D Wireframe]



LAYER PROPERTIES MANAGER

Current layer: paredes 10 Search for layer

S...	Name	O..	F...	L...	P...	Color	Linety
0						wh...	Conti
	geometria					8	Conti
	hatch					30	Conti
	invisiblid...					ma...	Conti
✓	paredes 10					50	Conti
	paredes 100					yel...	Conti
	texto					30	Conti
	vista 10					red	Conti
	vista 100					red	Conti

Home Insert Annotate Parametric View Manage Output Add-ins Collaborate Express Tools Featured Apps

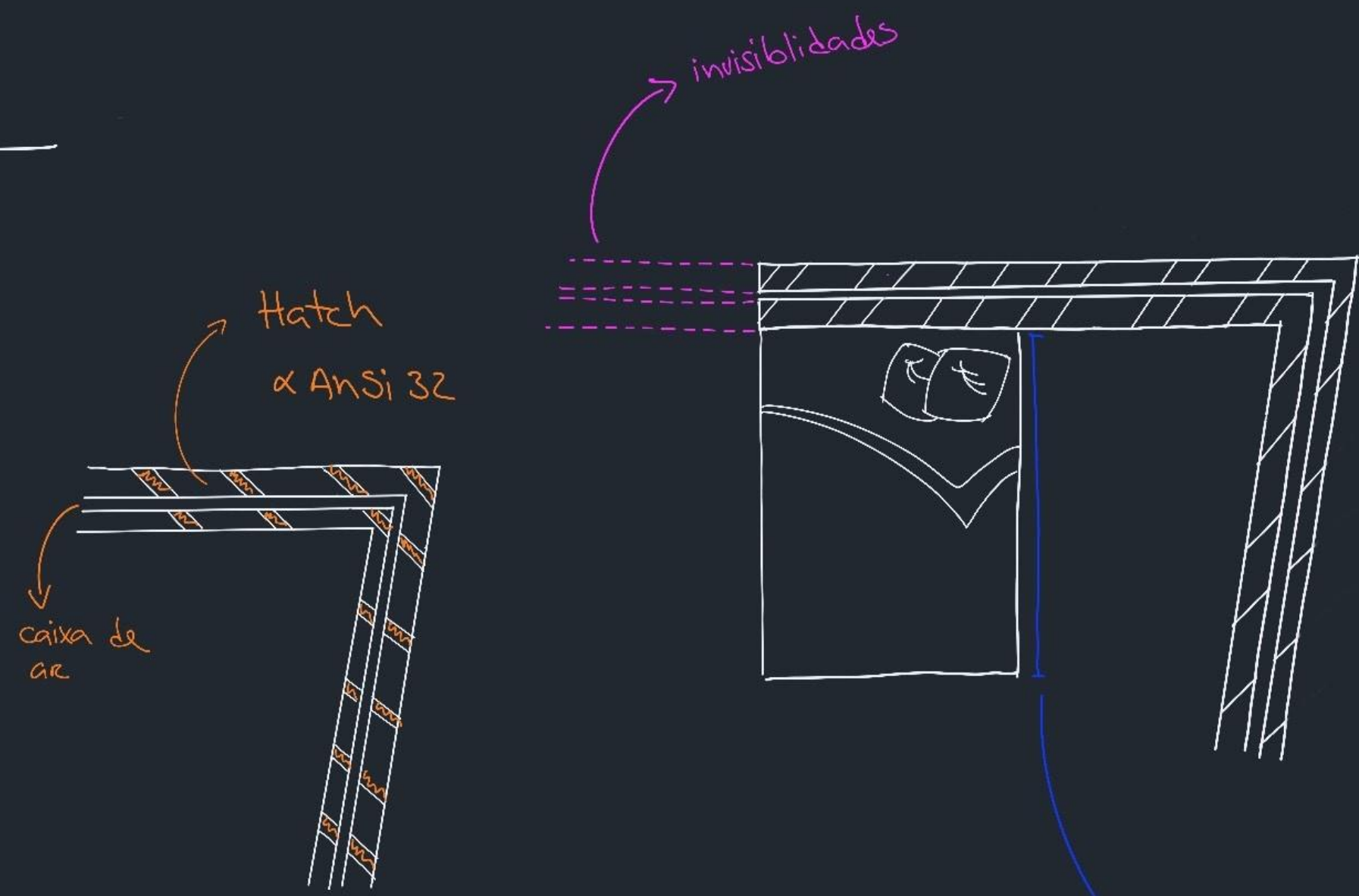
Line Polyline Circle Arc Move Rotate Trim Copy Mirror Fillet Stretch Scale Array Text Dimension Layer Properties Layers Block Properties Groups Utilities Clipboard View

S...	Name	O...	F...	L...	P...	Color	Linety
0						wh...	Conti
alçados						90	Conti
cortes						160	Conti
Defpoints						wh...	Conti
exterior						25	Conti
geometria						8	Conti
hatch						ma...	Conti
inv. 10						ma...	ACAD
invisibla...						144	ACAD
paredes 10						50	Conti
paredes 100						yel...	Conti
texto						109	Conti
TOP						wh...	Conti
Vão 10						red	Conti
Vão 100						red	Conti
vista 10						red	Conti
vista 100						red	Conti



Lista de comandos

- × ARC
- × Copy
- × Extend
- × Hatch
- × Line
- × Mirror
- × Move
- × Poly line
- × trim
- × scale



como usada como referencia para escalar a planta à escala real. (200cm)

× comando - scale ... selecionar imagem ...

Base Point ... inserir medida a que queremos aquele lado do objeto

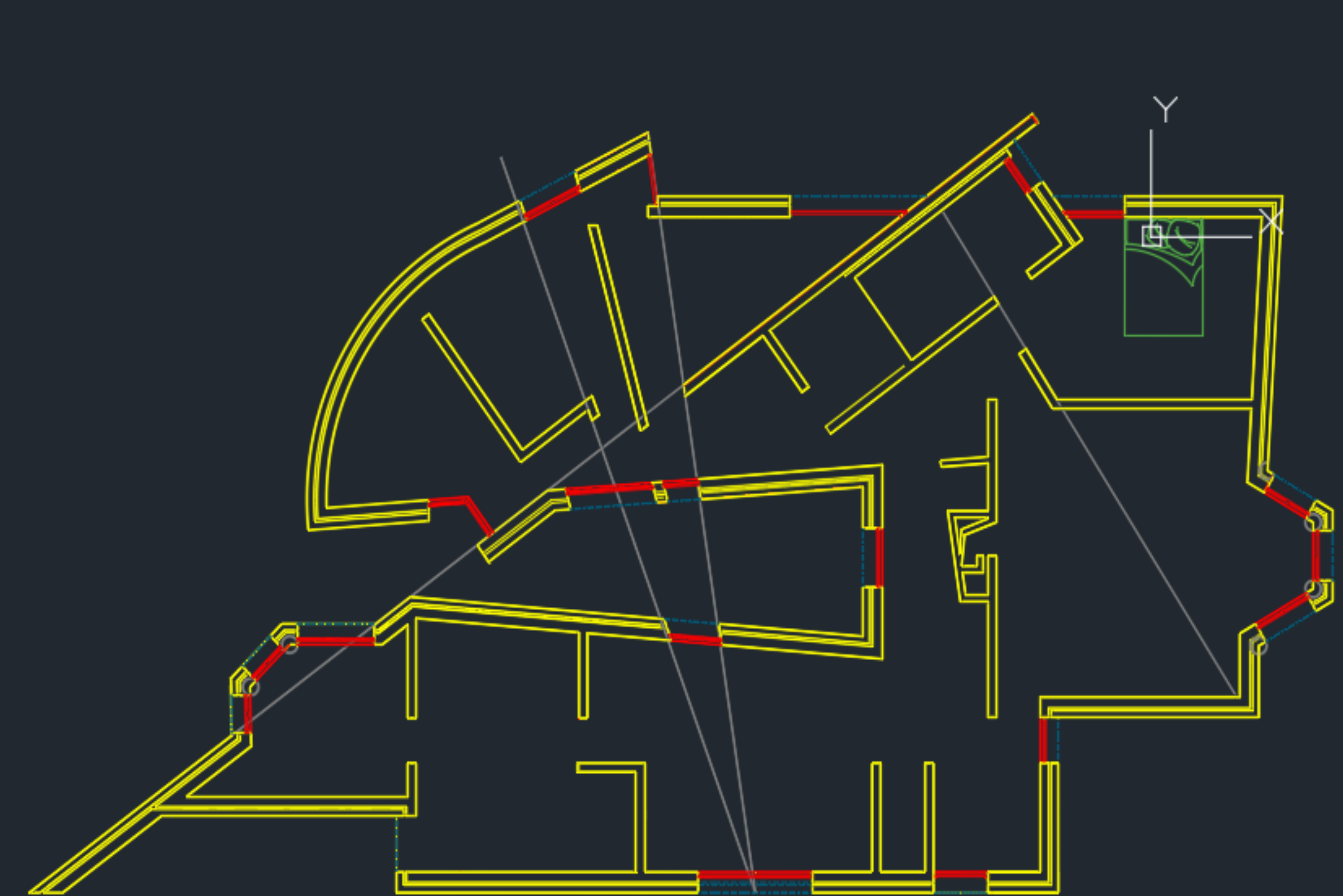
Command: <Object Snap Tracking on>

Command: <Object Snap Tracking off>

Home Insert Annotate Parametric View Manage Output Add-ins Collaborate Express Tools Featured Apps

Line Polyline Circle Arc Move Rotate Trim Copy Mirror Fillet Stretch Scale Array Text Dimension Layer Properties Layers Insert Match Properties Group Measure Paste Base

[-][Top][2D Wireframe]



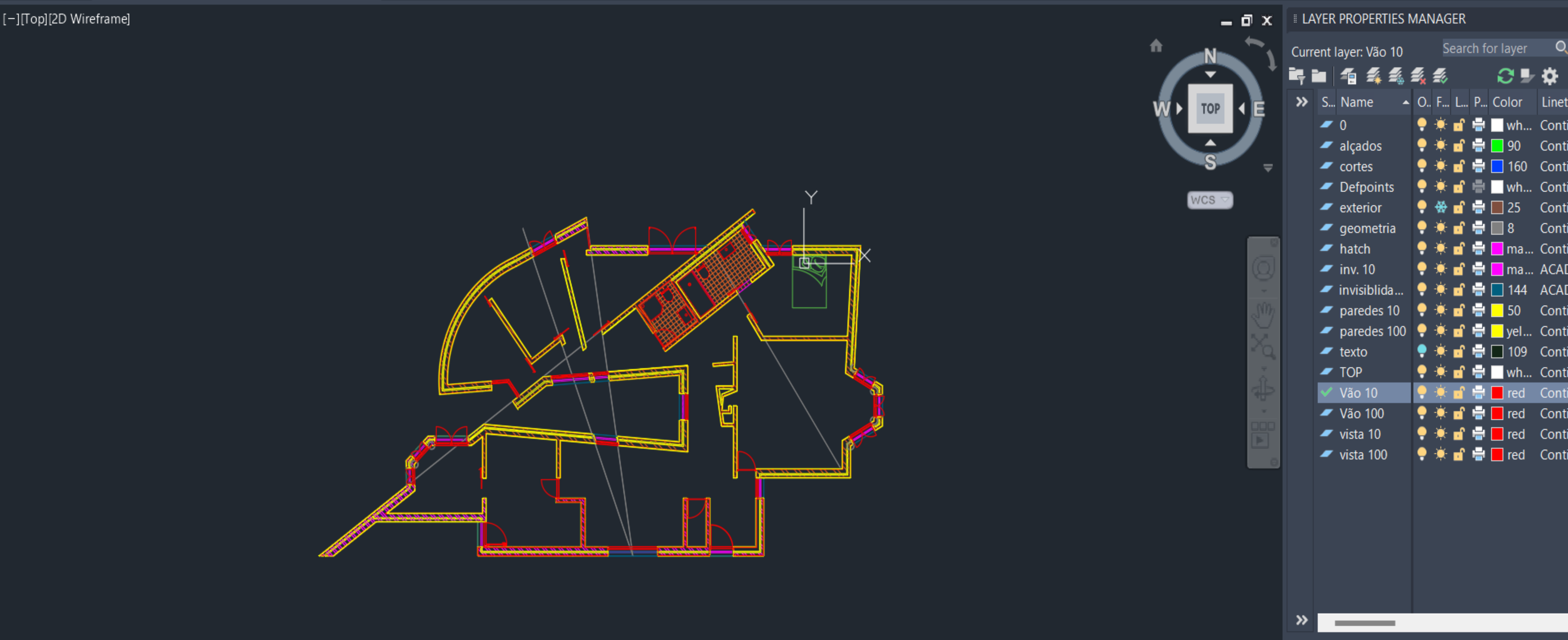
LAYER PROPERTIES MANAGER

Current layer: cortes Search for layer

S...	Name	O...	F...	L...	P...	Color	Linety
0	0	Light	On	Lock	Print	White	Continuous
alçados	alçados	Light	On	Lock	Print	Green	Continuous
cortes	cortes	Light	On	Lock	Print	Blue	Continuous
Defpoints	Defpoints	Light	On	Lock	Print	White	Continuous
exterior	exterior	Light	Off	Lock	Print	Brown	Continuous
geometria	geometria	Light	On	Lock	Print	Grey	Continuous
hatch	hatch	Light	On	Lock	Print	Magenta	Continuous
inv. 10	inv. 10	Light	On	Lock	Print	Magenta	ACAD
invisibla...	invisibla...	Light	On	Lock	Print	Cyan	ACAD
paredes 10	paredes 10	Light	On	Lock	Print	Yellow	Continuous
paredes 100	paredes 100	Light	On	Lock	Print	Yellow	Continuous
texto	texto	Light	On	Lock	Print	Black	Continuous
TOP	TOP	Light	On	Lock	Print	White	Continuous
Vão 10	Vão 10	Light	On	Lock	Print	Red	Continuous
Vão 100	Vão 100	Light	On	Lock	Print	Red	Continuous
vista 10	vista 10	Light	On	Lock	Print	Red	Continuous
vista 100	vista 100	Light	On	Lock	Print	Red	Continuous

Home Insert Annotate Parametric View Manage Output Add-ins Collaborate Express Tools Featured Apps

Line Polyline Circle Arc Move Rotate Trim Copy Mirror Fillet Stretch Scale Array Text Dimension Layer Properties Layers Block Properties Groups Utilities Clipboard View



LAYER PROPERTIES MANAGER

Current layer: Vão 10 Search for layer

S...	Name	O...	F...	L...	P...	Color	Linew...
0	0	On	Off	Lock	Print	wh...	Conti
alçados	alçados	On	Off	Lock	Print	90	Conti
cortes	cortes	On	Off	Lock	Print	160	Conti
Defpoints	Defpoints	On	Off	Lock	Print	wh...	Conti
exterior	exterior	On	Off	Lock	Print	25	Conti
geometria	geometria	On	Off	Lock	Print	8	Conti
hatch	hatch	On	Off	Lock	Print	ma...	Conti
inv. 10	inv. 10	On	Off	Lock	Print	ma...	ACAD
invisibla...	invisibla...	On	Off	Lock	Print	144	ACAD
paredes 10	paredes 10	On	Off	Lock	Print	50	Conti
paredes 100	paredes 100	On	Off	Lock	Print	yel...	Conti
texto	texto	On	Off	Lock	Print	109	Conti
TOP	TOP	On	Off	Lock	Print	wh...	Conti
✓	Vão 10	On	Off	Lock	Print	red	Conti
	Vão 100	On	Off	Lock	Print	red	Conti
	vista 10	On	Off	Lock	Print	red	Conti
	vista 100	On	Off	Lock	Print	red	Conti

Home Insert Annotate Parametric View Manage Output Add-ins Collaborate Express Tools Featured Apps

Line Polyline Circle Arc Move Rotate Trim Copy Mirror Fillet Stretch Scale Array Text Dimension Layer Properties Layers Block Properties Groups Utilities Clipboard View

[-][Top][2D Wireframe]

Comando ARC nos pontos verdes.

Hatch - Ar-sand 0.0008

Hatch - Ar-sand 0.002

Hatch - Ar-sand 0.002

Hatch - Ar-conc 0.0025

offset 0.025

offset 0.05

0.19

0.07

0.005

0.008

0.008

WCS

WCS

WCS

Command: <Object Snap Tracking

Command: <Object Snap Tracking

LAYER PROPERTIES MANAGER

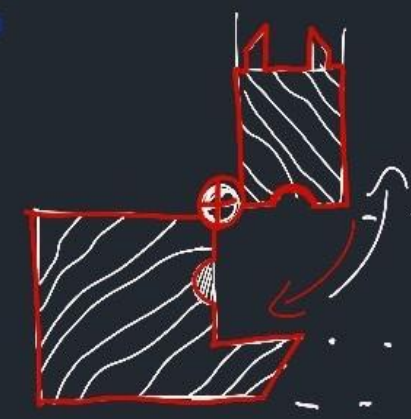
Current layer: paredes 10 Search for layer

S...	Name	O...	F...	L...	P...	Color	Linety
0	0					wh...	Conti
	alçados					90	Conti
	cortes					160	Conti
	Defpoints					wh...	Conti
	exterior					25	Conti
	geometria					8	Conti
	hatch					ma...	Conti
	inv. 10					ma...	ACAD
	invisiblda...					144	ACAD
	paredes 10					50	Conti
	paredes 100					yel...	Conti
	texto					109	Conti
	TOP					wh...	Conti
	Vão 10					red	Conti
	Vão 100					red	Conti
	vista 10					red	Conti
	vista 100					red	Conti

Atualização de comandos

- × ARC
- × Copy
- × Extend
- × Hatch
- × Line
- × Mirror
- × Move
- × Poly line
- × trim
- × scale
- × stretch
- × offset
- × fillet
- × explode
- × Match properties
- × Zoom

Promenor do caixilho



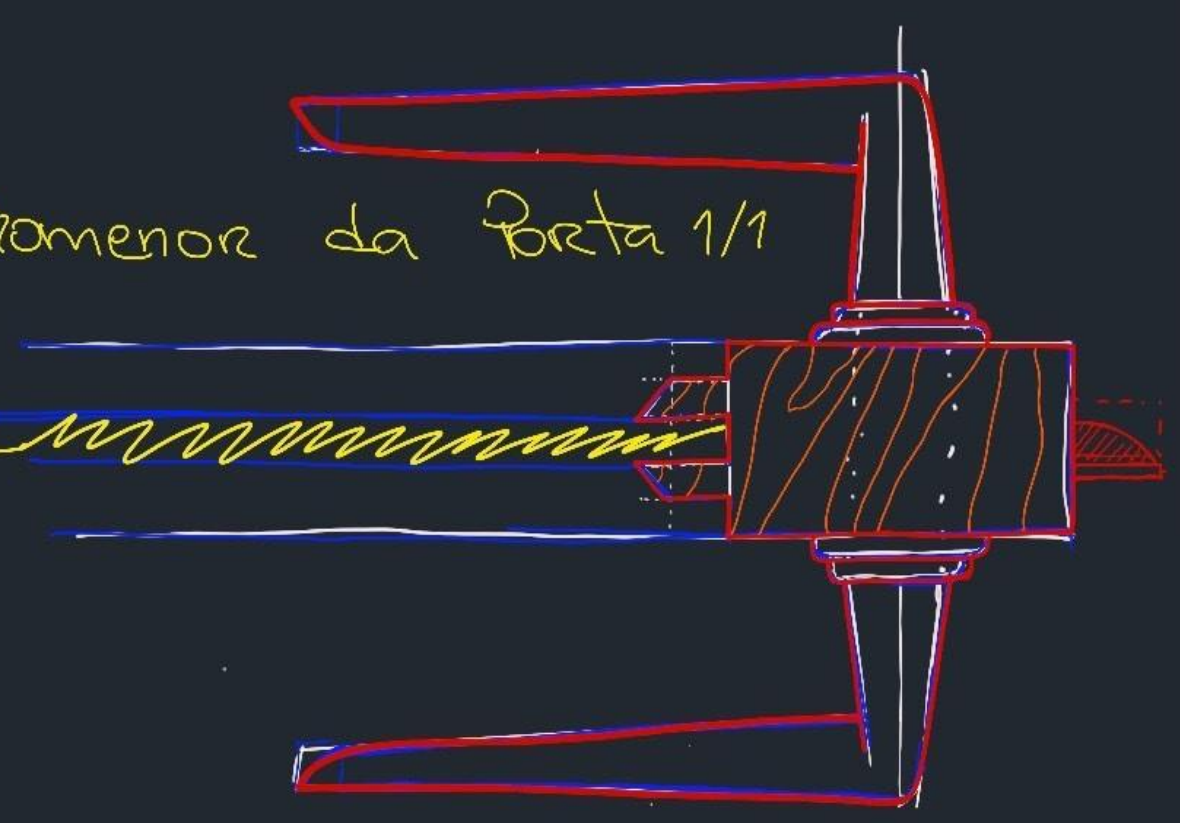
Hatch utilizados

- × Ansi 31
 - densidade: 0.025
 - tijolo
 - × Ar-sand
 - densidade: 0.0008
 - Reboco
 - × Ar-conc
 - densidade: 0.0025
 - Betão
- usado nas paredes
- laje

tem de ser de angulo de forma a que permita a abertura

Promenor da Porta 1/1

vidros



S...	Name	O.	F...	L...	P...	Color	Linety
0						wh...	Conti
	alçados					90	Conti
	cortes					160	Conti
	Defpoints					wh...	Conti
	exterior					25	Conti
	geometria					8	Conti
	hatch					ma...	Conti
	inv. 10					ma...	ACAD
	invisiblid...					144	ACAD
✓	paredes 10					50	Conti
	paredes 100					yel...	Conti
	texto					109	Conti
	TOP					wh...	Conti
	Vão 10					red	Conti
	Vão 100					red	Conti
	vista 10					red	Conti
	vista 100					red	Conti

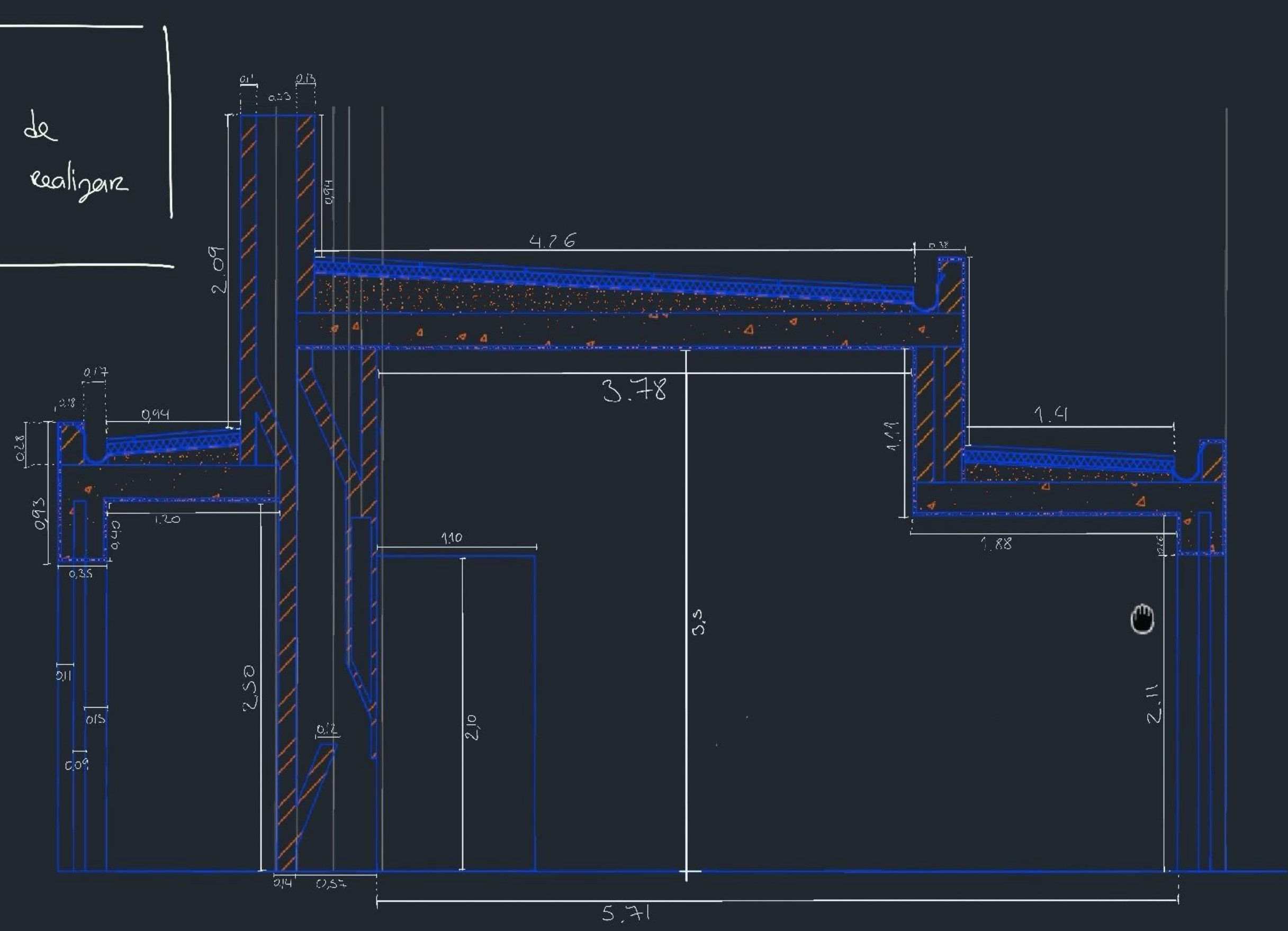
Command: <Object Snap Tracking on>
 Command: <Object Snap Tracking off>

Home Insert Annotate Parametric View Manage Output Add-ins Collaborate Express Tools Featured Apps

Line Polyline Circle Arc Move Rotate Trim Copy Mirror Fillet Stretch Scale Array Text Dimension Layer Properties Layers Block Properties Groups Utilities Clipboard View

[Top][2D Wireframe]

Anotações do corte de forma a conseguir realizar o restante do alçado



LAYER PROPERTIES MANAGER

Current layer: paredes 10

S...	Name	O...	F...	L...	P...	Color	Linety
0	0					wh...	Conti
alçados	alçados					90	Conti
cortes	cortes					160	Conti
Defpoints	Defpoints					wh...	Conti
exterior	exterior					25	Conti
geometria	geometria					8	Conti
hatch	hatch					ma...	Conti
inv. 10	inv. 10					ma...	ACAD
invisibla...	invisibla...					144	ACAD
paredes 10	paredes 10					50	Conti
paredes 100	paredes 100					yel...	Conti
texto	texto					109	Conti
TOP	TOP					wh...	Conti
Vão 10	Vão 10					red	Conti
Vão 100	Vão 100					red	Conti
vista 10	vista 10					red	Conti
vista 100	vista 100					red	Conti

Command: <Object Snap Tracking on
Command: <Object Snap Tracking of

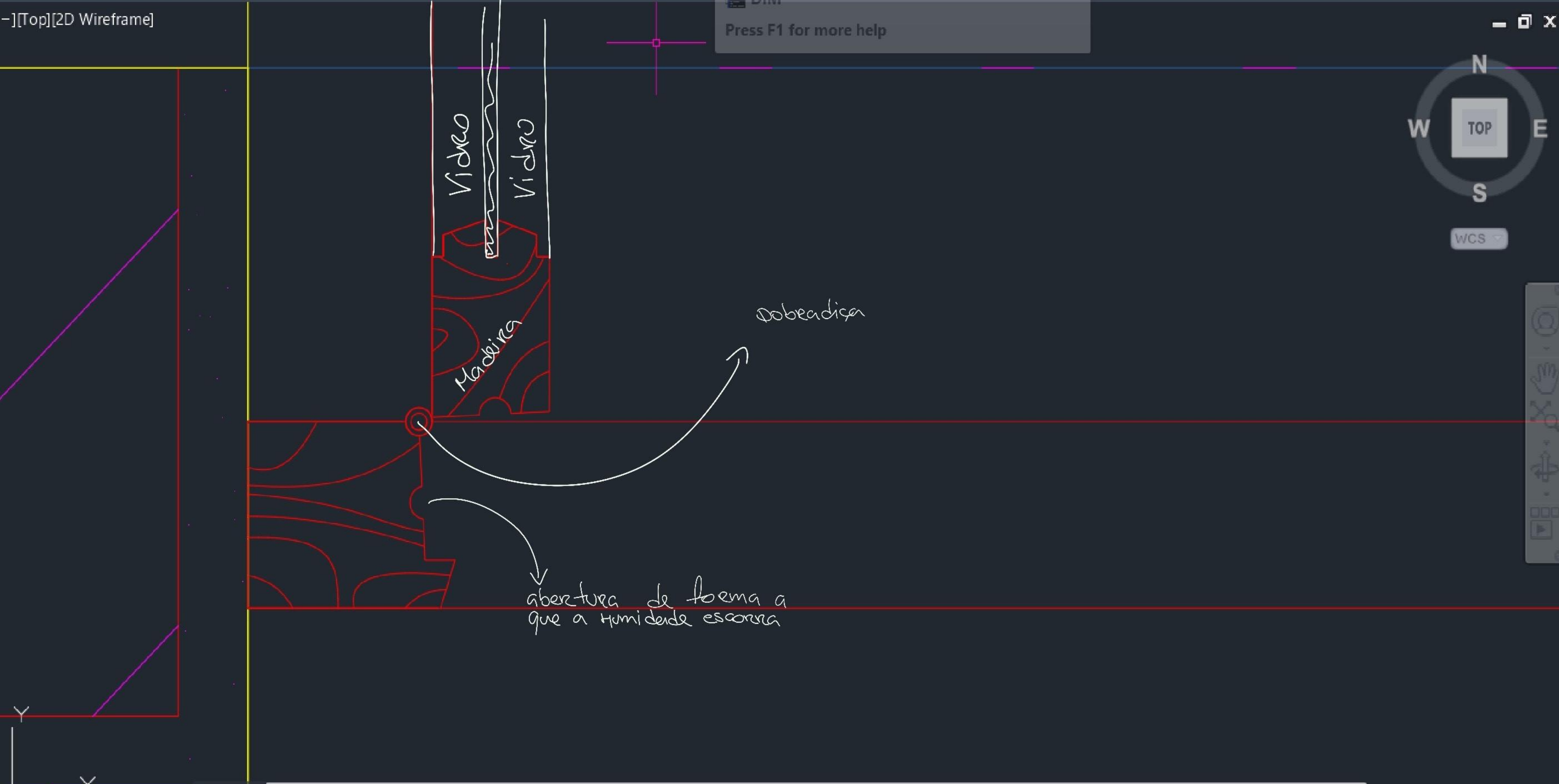
Home Insert Annotate Parametric View Manage Output Add-ins Collaborate Express Tools Featured Apps

Line Polyline Circle Arc Move Rotate Trim Copy Mirror Fillet Stretch Scale Array Text Dimension Layer Properties

Creates multiple types of dimensions within a single command session.

Insert Match Properties Group Measure Paste Base

representação ex ...1_29586_33ab41cd*



LAYER PROPERTIES MANAGER

Current layer: paredes 10

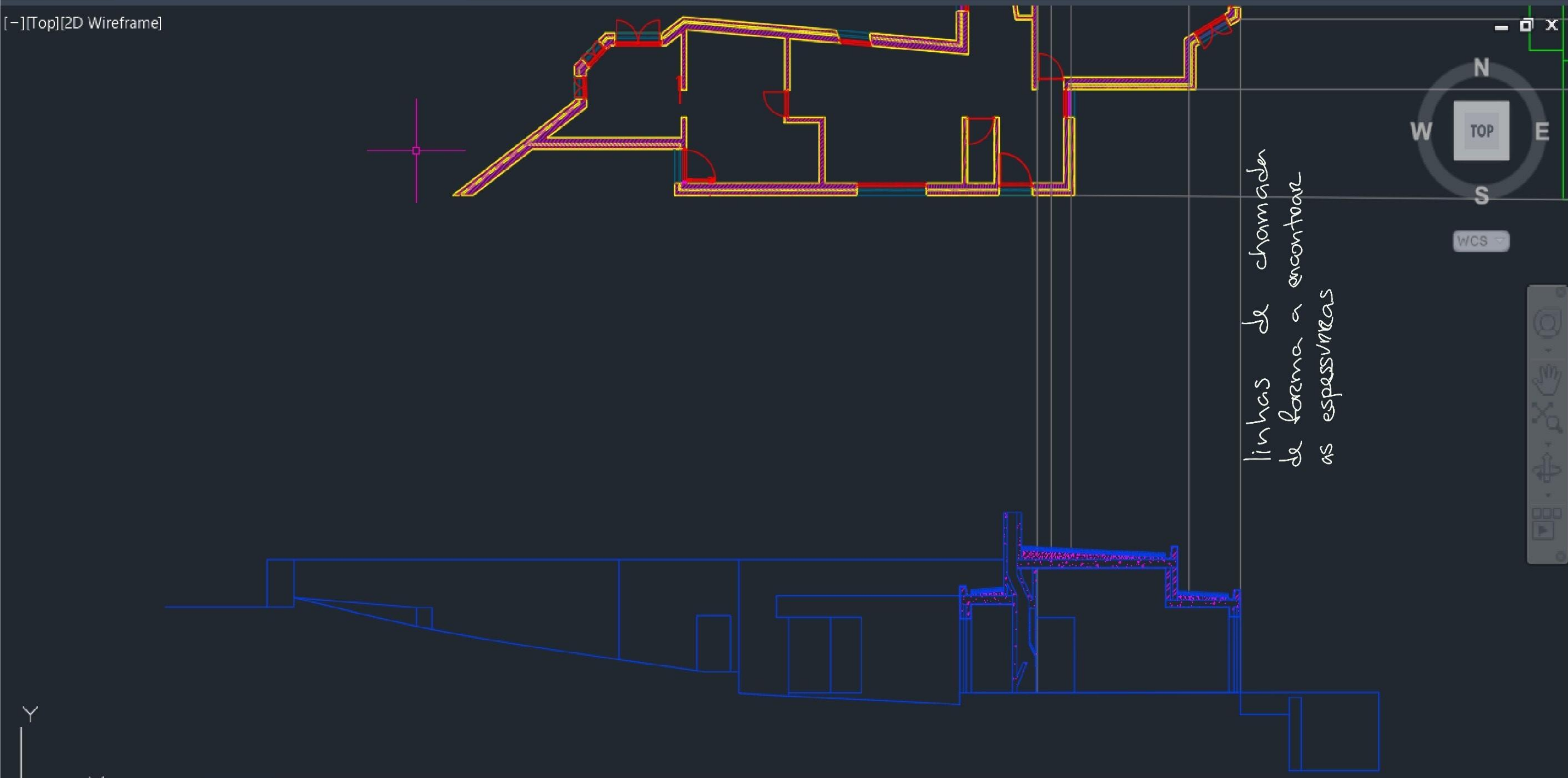
S...	Name	O..	F...	L...	P...	Color	Linetype
0	0	Light	On	Lock	Print	White	Continuous
alçados	alçados	Light	On	Lock	Print	Green	Continuous
cortes	cortes	Light	On	Lock	Print	Blue	Continuous
Defpoints	Defpoints	Light	On	Lock	Print	White	Continuous
exterior	exterior	Light	Off	Lock	Print	Brown	Continuous
geometria	geometria	Light	On	Lock	Print	Grey	Continuous
hatch	hatch	Light	On	Lock	Print	Magenta	Continuous
inv. 10	inv. 10	Light	On	Lock	Print	Magenta	ACAD_IS
invisiblid...	invisiblid...	Light	On	Lock	Print	Cyan	ACAD_IS
paredes 10	paredes 10	Light	On	Lock	Print	Yellow	Continuous
paredes 100	paredes 100	Light	On	Lock	Print	Yellow	Continuous
texto	texto	Light	On	Lock	Print	Black	Continuous
TOP	TOP	Light	On	Lock	Print	White	Continuous
Vão 10	Vão 10	Light	On	Lock	Print	Red	Continuous
Vão 100	Vão 100	Light	On	Lock	Print	Red	Continuous
vista 10	vista 10	Light	On	Lock	Print	Red	Continuous
vista 100	vista 100	Light	On	Lock	Print	Red	Continuous

Type a command

Home Insert Annotate Parametric View Manage Output Add-ins Collaborate Express Tools Featured Apps

Line Polyline Circle Arc Move Rotate Trim Copy Mirror Fillet Stretch Scale Array Text Dimension Layer Properties Layers Insert Match Properties Groups Measure Paste Base

representacao ex ...1_29586_33ab41cd*



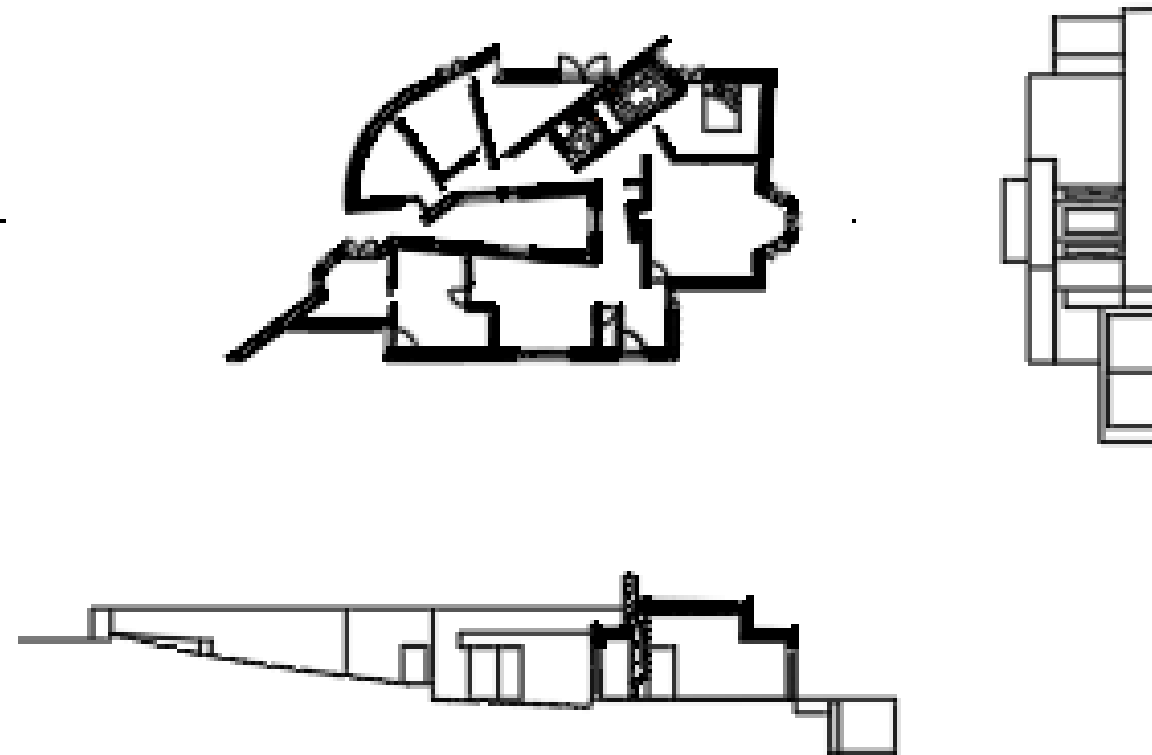
LAYER PROPERTIES MANAGER

Current layer: paredes 10

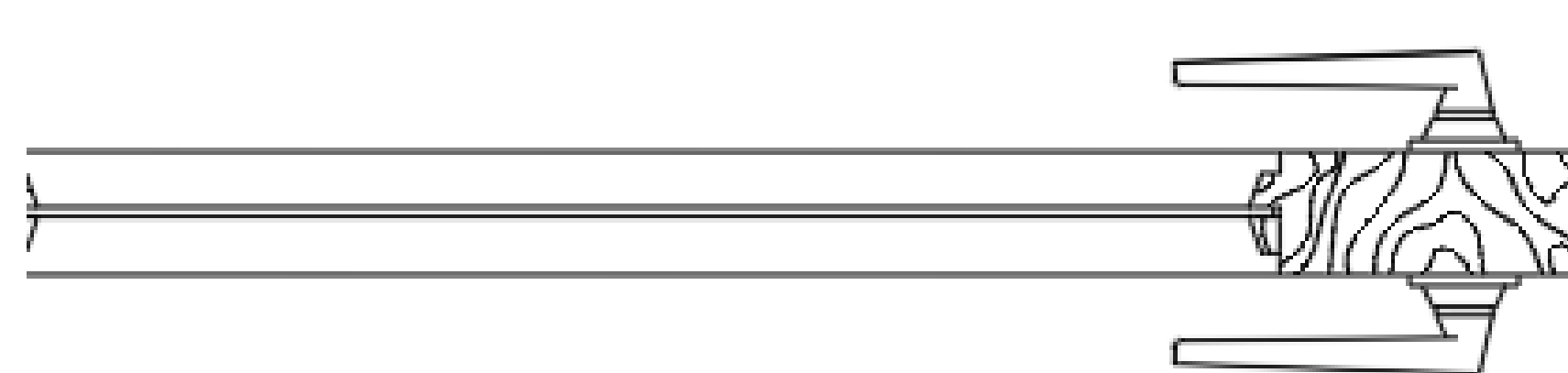
Name	Color	Linetype
0	wh...	Continu...
alçados	90	Continu...
cortes	160	Continu...
Defpoints	wh...	Continu...
exterior	25	Continu...
geometria	8	Continu...
hatch	ma...	Continu...
inv. 10	ma...	ACAD_IS...
invisibla...	144	ACAD_IS...
paredes 10	50	Continu...
paredes 100	yel...	Continu...
texto	109	Continu...
TOP	wh...	Continu...
Vão 10	red	Continu...
Vão 100	red	Continu...
vista 10	red	Continu...
vista 100	red	Continu...

All Used Layers: 17 layers displayed of 17 total la

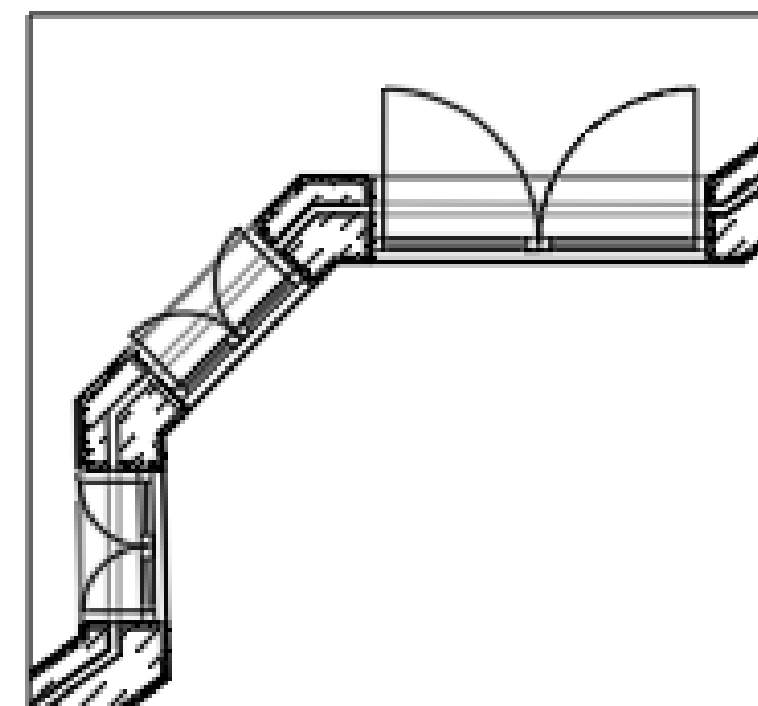
Sistema de Representação FAUL 2023 / 2024
Trabalho 1- Casa António Carlos Siza



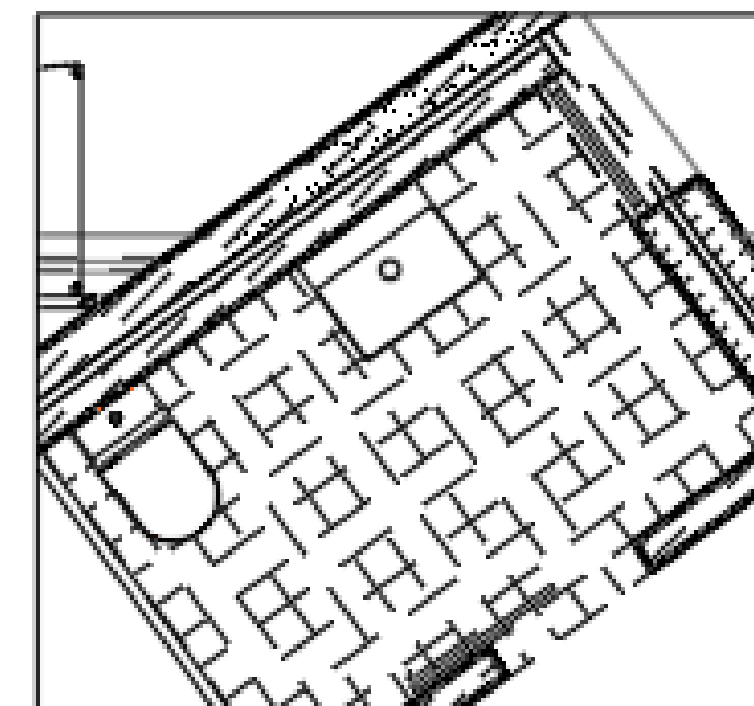
Planta Corte e Alçados_esc:1/100



Pormenor de Porta_esc: 1/1



Pormenor Planta_esc: 1/10



Pormenor Planta_esc: 1/10

File Edit View Insert Format Tools Draw Dimension Modify Parametric Window Help Express

Home Insert Annotate Parametric View Manage Output Add-ins Collaborate Express Tools Featured Apps

Line Polyline Circle Arc Move Rotate Trim Copy Mirror Fillet Stretch Scale Array Text Dimension Layer Properties Layers Insert Match Properties Groups Utilities Clipboard View



LAYER PROPERTIES MANAGER

Current layer: auxiliar Search for layer

S...	Name	O..	F...	L...	P...	Color	Linety
0	0	Light	On	Lock	Print	wh...	Conti
✓	auxiliar	Light	On	Lock	Print	8	Conti
	dodecaedro	Light	On	Lock	Print	200	Conti
	hexaedro	Light	On	Lock	Print	50	Conti
	icosaedro	Light	On	Lock	Print	160	Conti
	octaedro	Light	On	Lock	Print	130	Conti
	tetraedro	Light	On	Lock	Print	40	Conti
	texto	Light	On	Lock	Print	wh...	Conti

Home Insert Annotate Parametric View Manage Output Add-ins Collaborate Express Tools Featured Apps

Line Polyline Circle Arc Move Rotate Trim Copy Mirror Fillet Stretch Scale Array Text Dimension Layer Properties Layers Match Layer Insert Match Properties Groups Measure Utilities Clipboard View



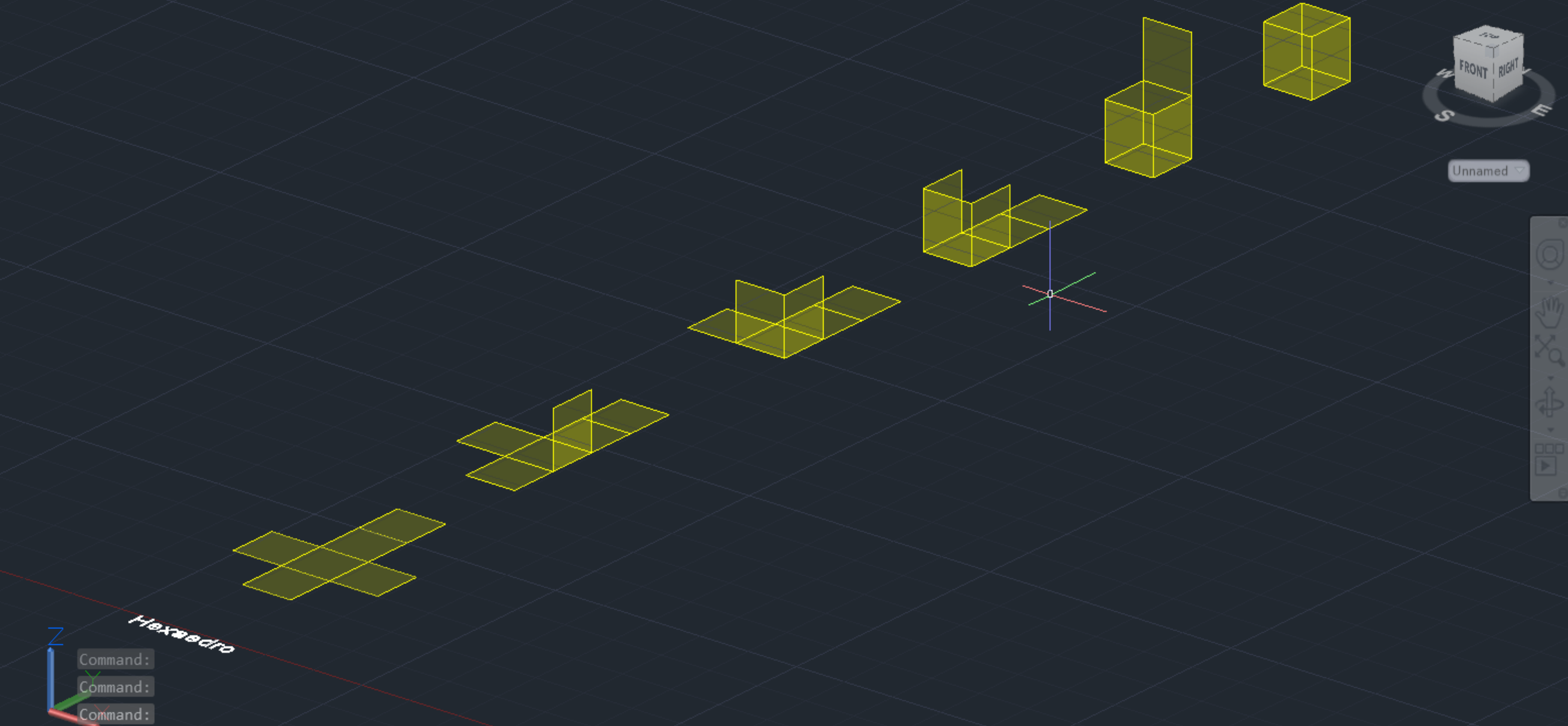
LAYER PROPERTIES MANAGER

Current layer: auxiliar Search for layer

S...	Name	O..	F...	L...	P...	Color	Linety
0	0	Light	On	Lock	Print	wh...	Conti
✓	auxiliar	Light	On	Lock	Print	8	Conti
	dodecaedro	Light	On	Lock	Print	200	Conti
	hexaedro	Light	On	Lock	Print	50	Conti
	icosaedro	Light	On	Lock	Print	160	Conti
	octaedro	Light	On	Lock	Print	130	Conti
	tetraedro	Light	On	Lock	Print	40	Conti
	texto	Light	On	Lock	Print	wh...	Conti

Line Polyline Circle Arc Move Rotate Trim Copy Mirror Fillet Stretch Scale Array Text Dimension Layer Properties Layers Insert Match Properties Group Measure Paste Base

[Custom View][Wireframe]



LAYER PROPERTIES MANAGER

Current layer: 0 Search for layer

S...	Name	O...	F...	L...	P...	Color	Linety
✓	0	☰	☀	🔒	🖨	wh...	Conti
	auxiliar	☰	☀	🔒	🖨	8	Conti
	dodecaedro	☰	☀	🔒	🖨	200	Conti
	hexaedro	☰	☀	🔒	🖨	50	Conti
	icosaedro	☰	☀	🔒	🖨	160	Conti
	octaedro	☰	☀	🔒	🖨	130	Conti
	tetraedro	☰	☀	🔒	🖨	40	Conti
	texto	☰	☀	🔒	🖨	wh...	Conti

Command: Command: Command: Type a command

All: 8 layers displayed of 8 total layers

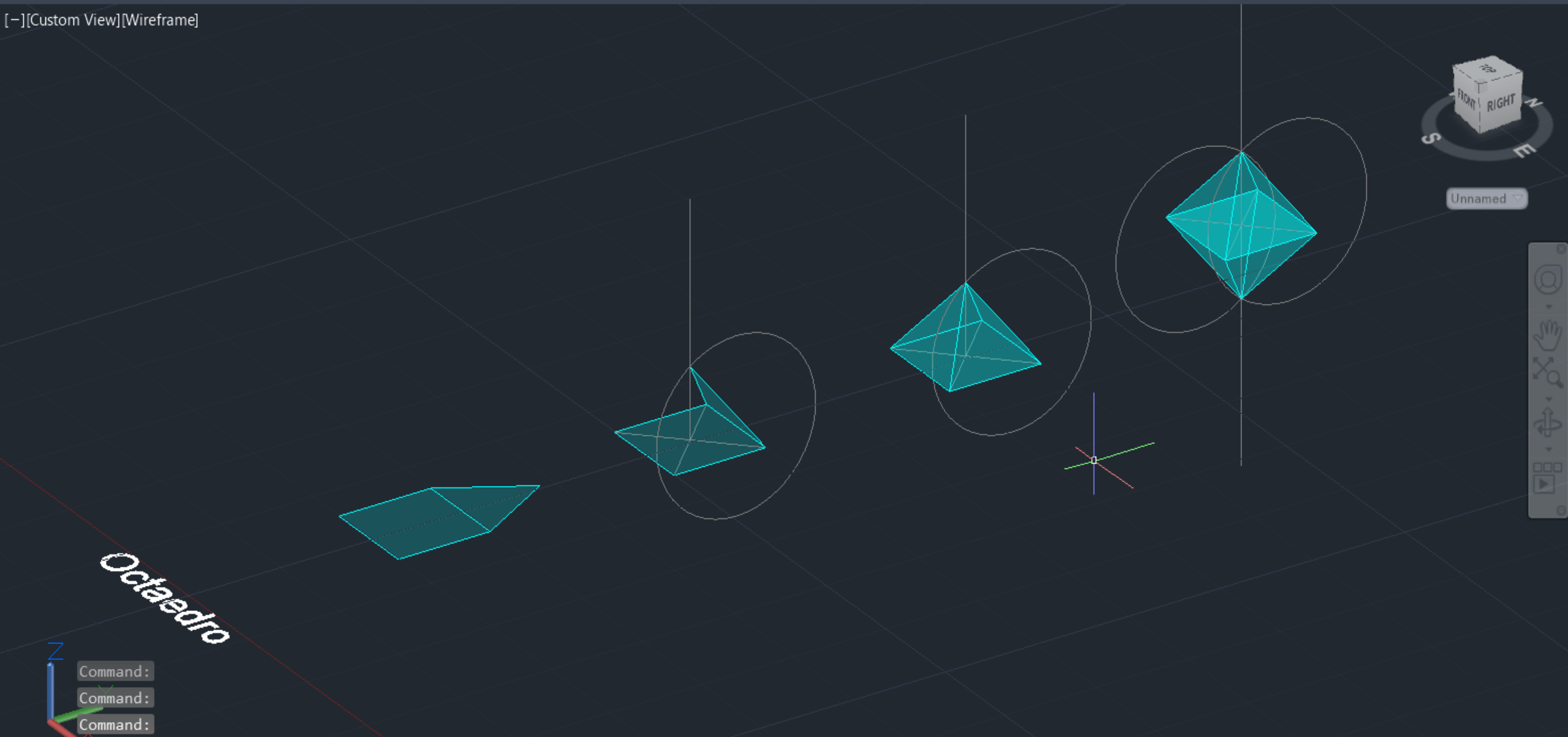
Autodesk AutoCAD 2024 3D doctaedros.dwg

File Edit View Insert Format Tools Draw Dimension Modify Parametric Window Help Express

Home Insert Annotate Parametric View Manage Output Add-ins Collaborate Express Tools Featured Apps

Line Polyline Circle Arc Move Rotate Trim Copy Mirror Fillet Stretch Scale Array Text Dimension Layer Properties Layers Insert Match Properties Groups Measure Paste Base

Start 3D doctaedros* x



LAYER PROPERTIES MANAGER

Current layer: 0 Search for layer

S...	Name	O...	F...	L...	P...	Color	Linety
✓	0	☑	☀	🔒	🖨	wh...	Conti
▬	auxiliar	☑	☀	🔒	🖨	8	Conti
▬	dodecaedro	☑	☀	🔒	🖨	200	Conti
▬	hexaedro	☑	☀	🔒	🖨	50	Conti
▬	icosaedro	☑	☀	🔒	🖨	160	Conti
▬	octaedro	☑	☀	🔒	🖨	130	Conti
▬	tetraedro	☑	☀	🔒	🖨	40	Conti
▬	texto	☑	☀	🔒	🖨	wh...	Conti

Command: Command: Command: Type a command

All: 8 layers displayed of 8 total layers

Model Layout1 Layout2

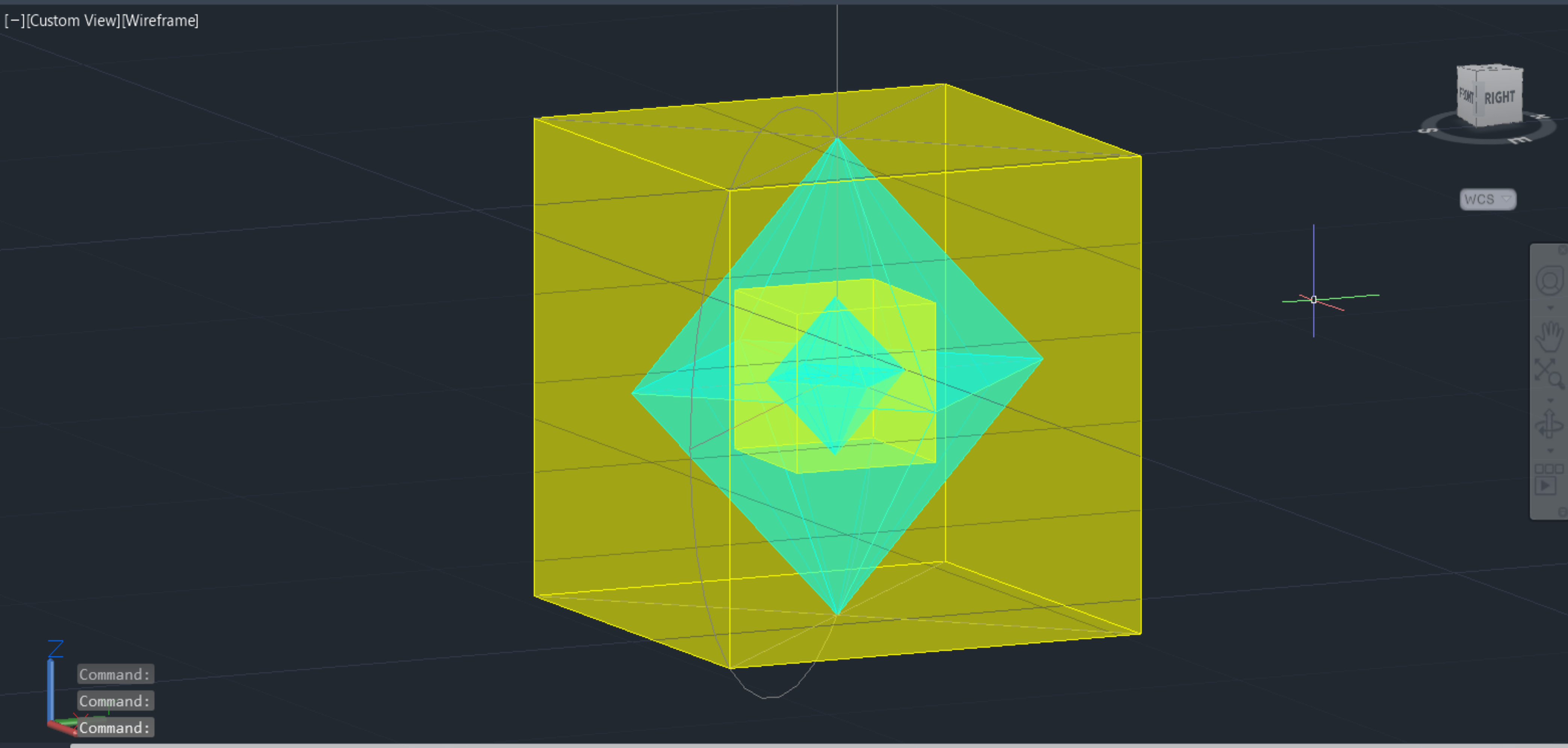
MODEL # 1:1

File Edit View Insert Format Tools Draw Dimension Modify Parametric Window Help Express

Home Insert Annotate Parametric View Manage Output Add-ins Collaborate Express Tools Featured Apps

Line Polyline Circle Arc Move Rotate Trim Copy Mirror Fillet Stretch Scale Array Text Dimension Layer Properties Layers Insert Match Properties Groups Measure Paste Base

Start 3D doctaedros* +



LAYER PROPERTIES MANAGER

Current layer: 0 Search for layer

S...	Name	O.	F...	L...	P...	Color	Linety
✓	0	☰	☀	🔒	🖨	wh...	Conti
	auxiliar	☰	☀	🔒	🖨	8	Conti
	dodecaedro	☰	☀	🔒	🖨	200	Conti
	hexaedro	☰	☀	🔒	🖨	50	Conti
	icosaedro	☰	☀	🔒	🖨	160	Conti
	octaedro	☰	☀	🔒	🖨	130	Conti
	tetraedro	☰	☀	🔒	🖨	40	Conti
	texto	☰	☀	🔒	🖨	wh...	Conti

All: 8 layers displayed of 8 total layers

Type a command

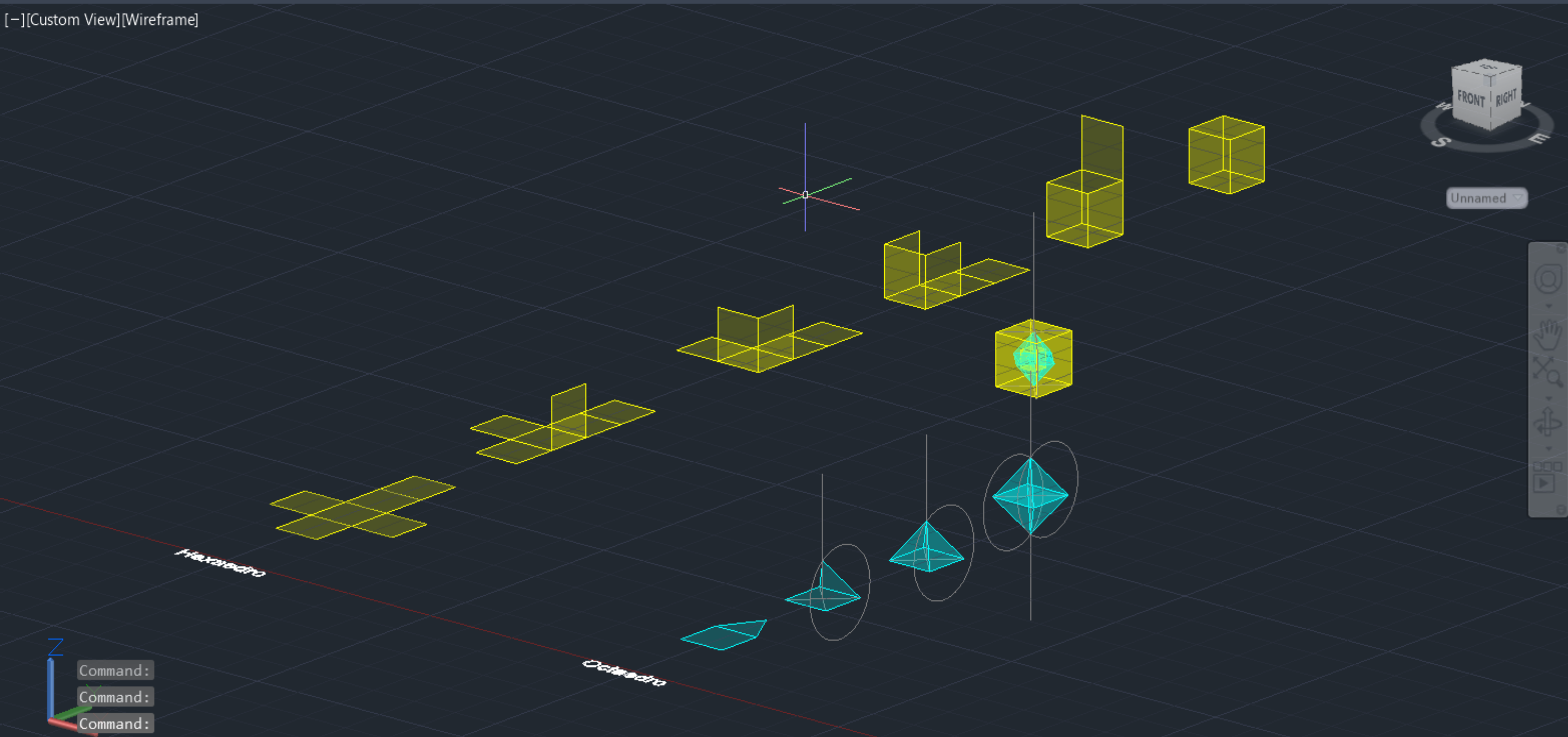
Autodesk AutoCAD 2024 3D doctaedros.dwg

File Edit View Insert Format Tools Draw Dimension Modify Parametric Window Help Express

Home Insert Annotate Parametric View Manage Output Add-ins Collaborate Express Tools Featured Apps

Line Polyline Circle Arc Move Rotate Trim Copy Mirror Fillet Stretch Scale Array Text Dimension Layer Properties Layers Insert Match Properties Groups Measure Paste Base

Start 3D doctaedros* x



LAYER PROPERTIES MANAGER

Current layer: 0 Search for layer

S...	Name	O..	F...	L...	P...	Color	Linety
✓	0	☹	☀	🔒	🖨	wh...	Conti
▸	auxiliar	☹	☀	🔒	🖨	8	Conti
▸	dodecaedro	☹	☀	🔒	🖨	200	Conti
▸	hexaedro	☹	☀	🔒	🖨	50	Conti
▸	icosaedro	☹	☀	🔒	🖨	160	Conti
▸	octaedro	☹	☀	🔒	🖨	130	Conti
▸	tetraedro	☹	☀	🔒	🖨	40	Conti
▸	texto	☹	☀	🔒	🖨	wh...	Conti

Command: Command: Command:

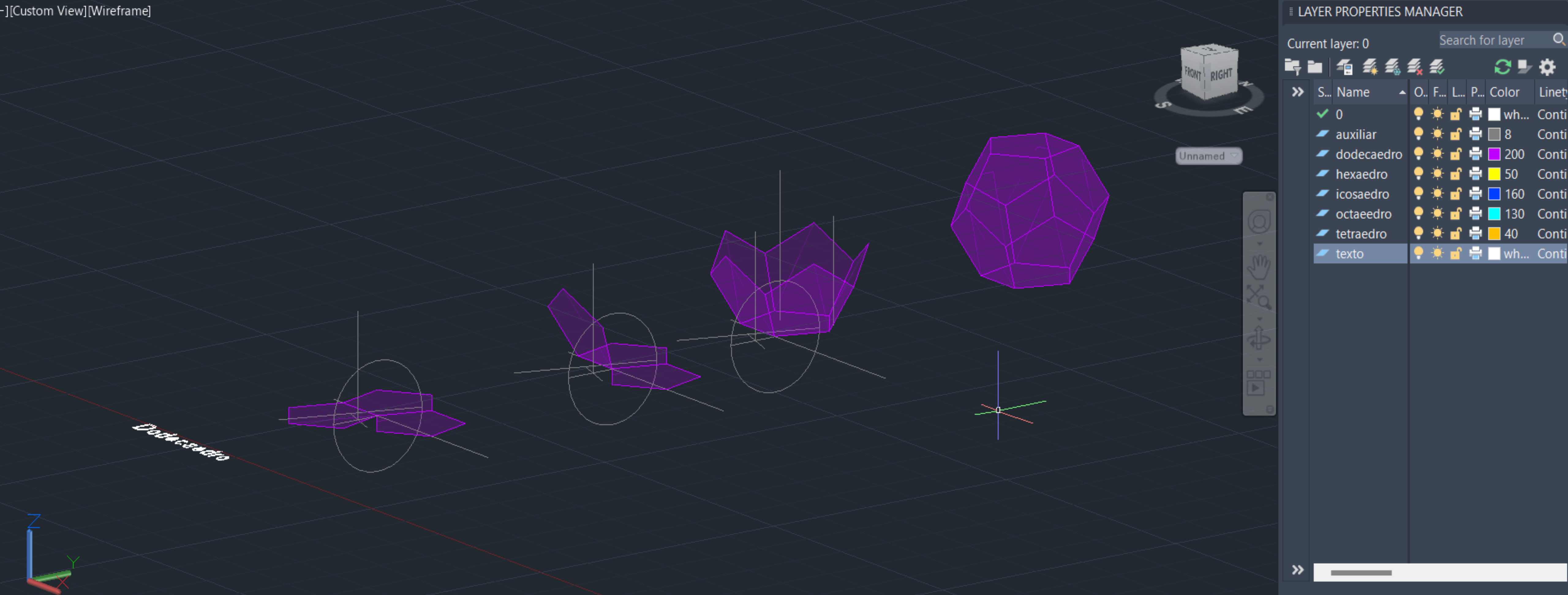
Type a command

All: 8 layers displayed of 8 total layers

Model Layout1 Layout2

MODEL # 1:1

Line Polyline Circle Arc Move Rotate Trim Copy Mirror Fillet Stretch Scale Array Text Dimension Layer Properties Layers Insert Match Properties Groups Utilities Clipboard View



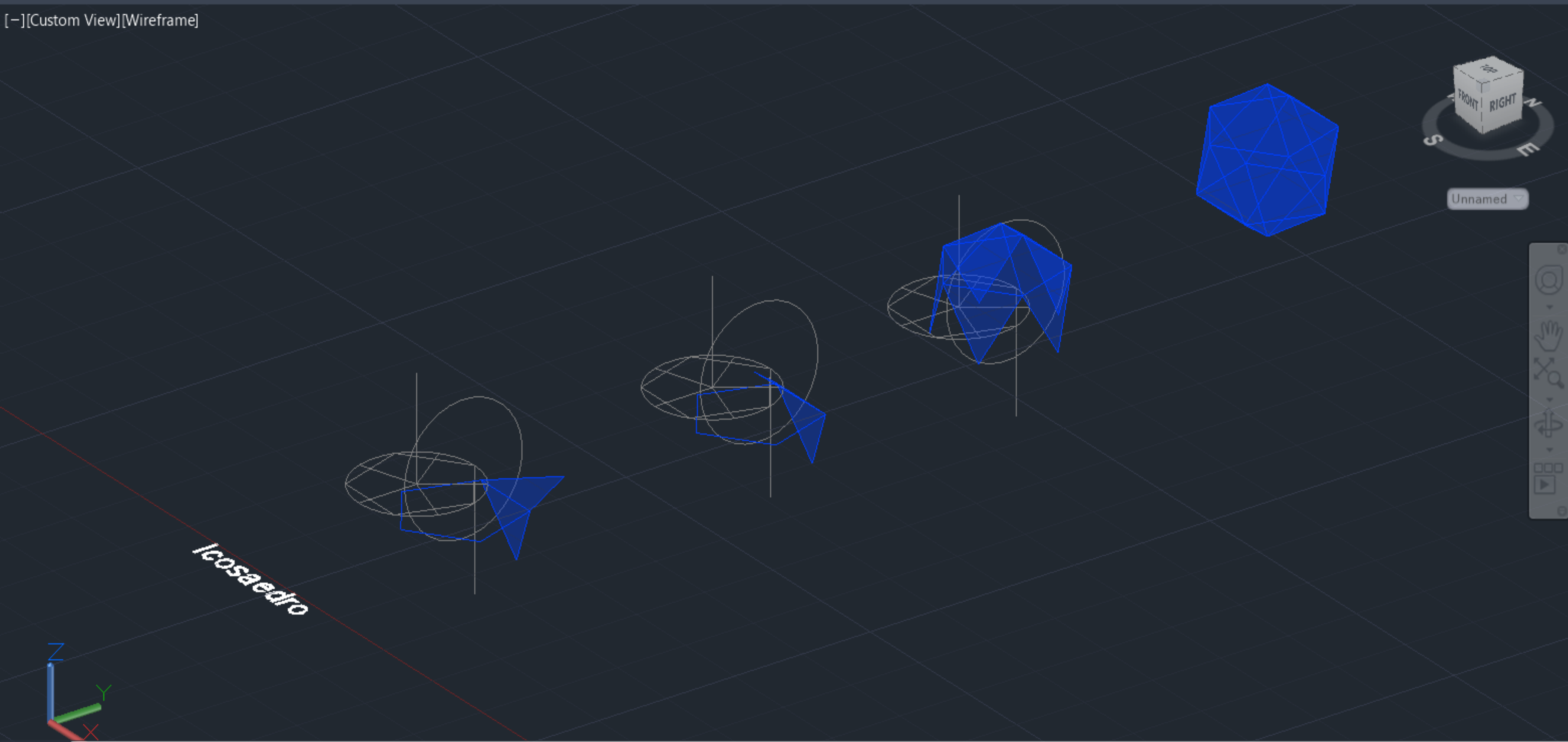
LAYER PROPERTIES MANAGER

Current layer: 0 Search for layer

S...	Name	O..	F...	L...	P...	Color	Linety
✓	0	☑	☑	☑	☑	wh...	Conti
✓	auxiliar	☑	☑	☑	☑	8	Conti
✓	dodecaedro	☑	☑	☑	☑	200	Conti
✓	hexaedro	☑	☑	☑	☑	50	Conti
✓	icosaedro	☑	☑	☑	☑	160	Conti
✓	octaedro	☑	☑	☑	☑	130	Conti
✓	tetraedro	☑	☑	☑	☑	40	Conti
✓	texto	☑	☑	☑	☑	wh...	Conti

All: 8 layers displayed of 8 total layers

Line Polyline Circle Arc Move Rotate Trim Copy Mirror Fillet Stretch Scale Array Text Dimension Layer Properties Layers Insert Match Properties Groups Utilities Clipboard View



LAYER PROPERTIES MANAGER

Current layer: 0 Search for layer

S...	Name	O..	F...	L...	P...	Color	Linety
✓	0	☑	☑	☑	☑	wh...	Conti
	auxiliar	☑	☑	☑	☑	8	Conti
	dodecaedro	☑	☑	☑	☑	200	Conti
	hexaedro	☑	☑	☑	☑	50	Conti
	icosaedro	☑	☑	☑	☑	160	Conti
	octaedro	☑	☑	☑	☑	130	Conti
	tetraedro	☑	☑	☑	☑	40	Conti
	texto	☑	☑	☑	☑	wh...	Conti

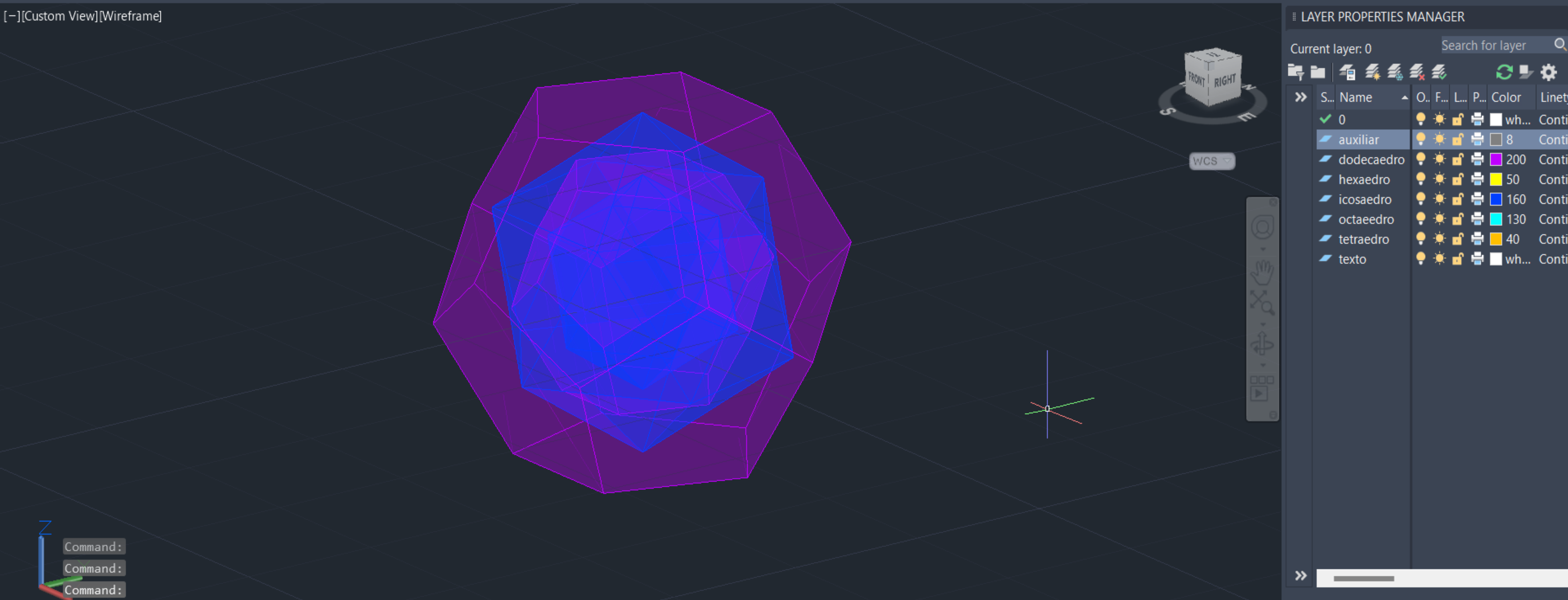
All: 8 layers displayed of 8 total layers

File Edit View Insert Format Tools Draw Dimension Modify Parametric Window Help Express

Home Insert Annotate Parametric View Manage Output Add-ins Collaborate Express Tools Featured Apps

Line Polyline Circle Arc Move Rotate Trim Copy Mirror Fillet Stretch Scale Array Text Dimension Layer Properties Layers Insert Match Properties Groups Measure Paste Base

Start 3D doctaedros* +



LAYER PROPERTIES MANAGER

Current layer: 0 Search for layer

S...	Name	O.	F...	L...	P...	Color	Linety
✓	0	☑	☀	🔒	🖨	wh...	Conti
	auxiliar	☑	☀	🔒	🖨	8	Conti
	dodecaedro	☑	☀	🔒	🖨	200	Conti
	hexaedro	☑	☀	🔒	🖨	50	Conti
	icosaedro	☑	☀	🔒	🖨	160	Conti
	octaedro	☑	☀	🔒	🖨	130	Conti
	tetraedro	☑	☀	🔒	🖨	40	Conti
	texto	☑	☀	🔒	🖨	wh...	Conti

Command:
Command:
Command:

Type a command

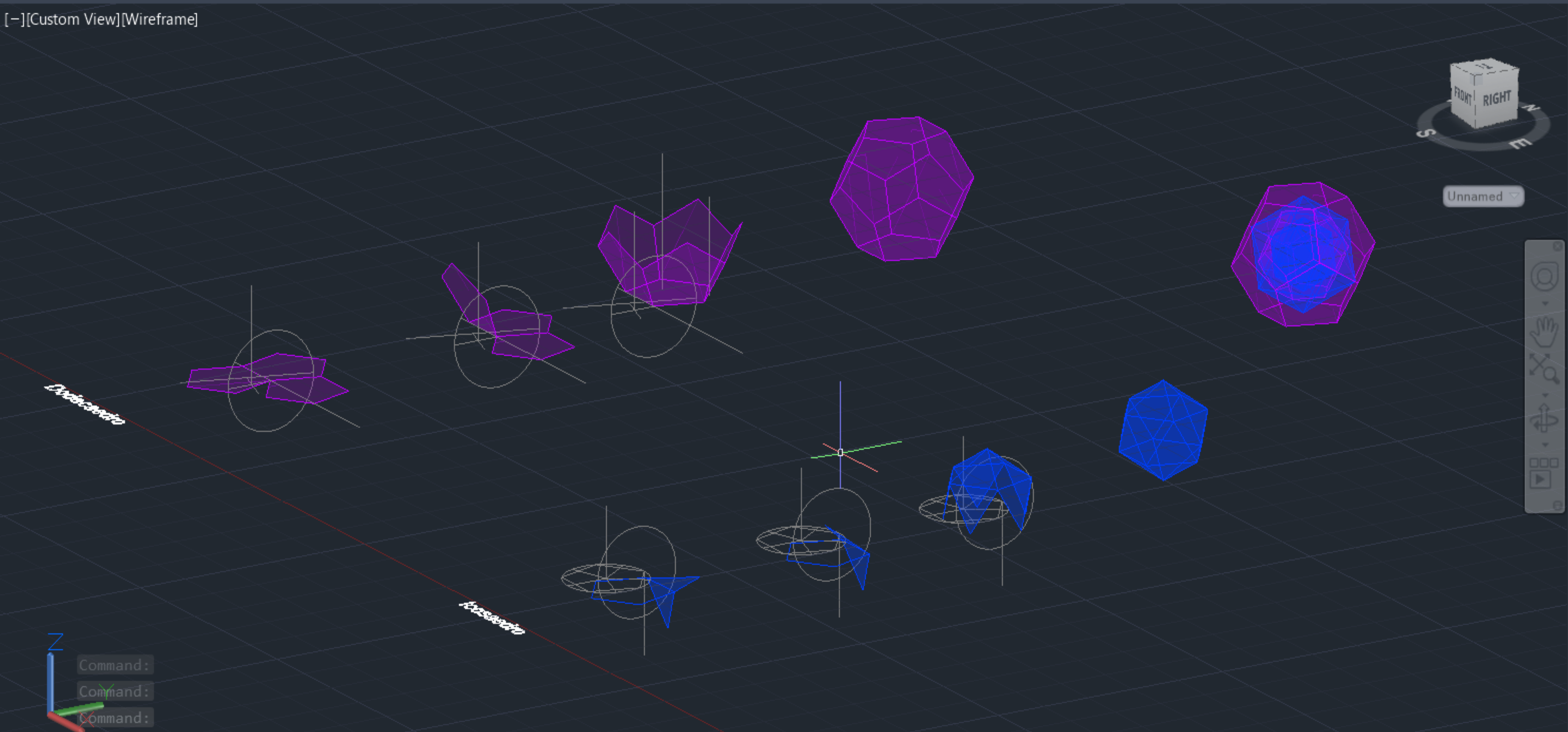
Autodesk AutoCAD 2024 3D doctaedros.dwg

File Edit View Insert Format Tools Draw Dimension Modify Parametric Window Help Express

Home Insert Annotate Parametric View Manage Output Add-ins Collaborate Express Tools Featured Apps

Line Polyline Circle Arc Move Rotate Trim Copy Mirror Fillet Stretch Scale Array Text Dimension Layer Properties Layers Insert Match Properties Groups Utilities Clipboard View

Start 3D doctaedros* x



LAYER PROPERTIES MANAGER

Current layer: 0

S...	Name	O..	F...	L...	P...	Color	Line
✓	0	☑	☀	🔒	🖨	wh...	Cont
▬	auxiliar	☑	☀	🔒	🖨	8	Cont
▬	dodecaedro	☑	☀	🔒	🖨	200	Cont
▬	hexaedro	☑	☀	🔒	🖨	50	Cont
▬	icosaedro	☑	☀	🔒	🖨	160	Cont
▬	octaedro	☑	☀	🔒	🖨	130	Cont
▬	tetraedro	☑	☀	🔒	🖨	40	Cont
▬	texto	☑	☀	🔒	🖨	wh...	Cont

Command: Command: Command: Type a command

Model Layout1 Layout2 + MODEL # 1:1

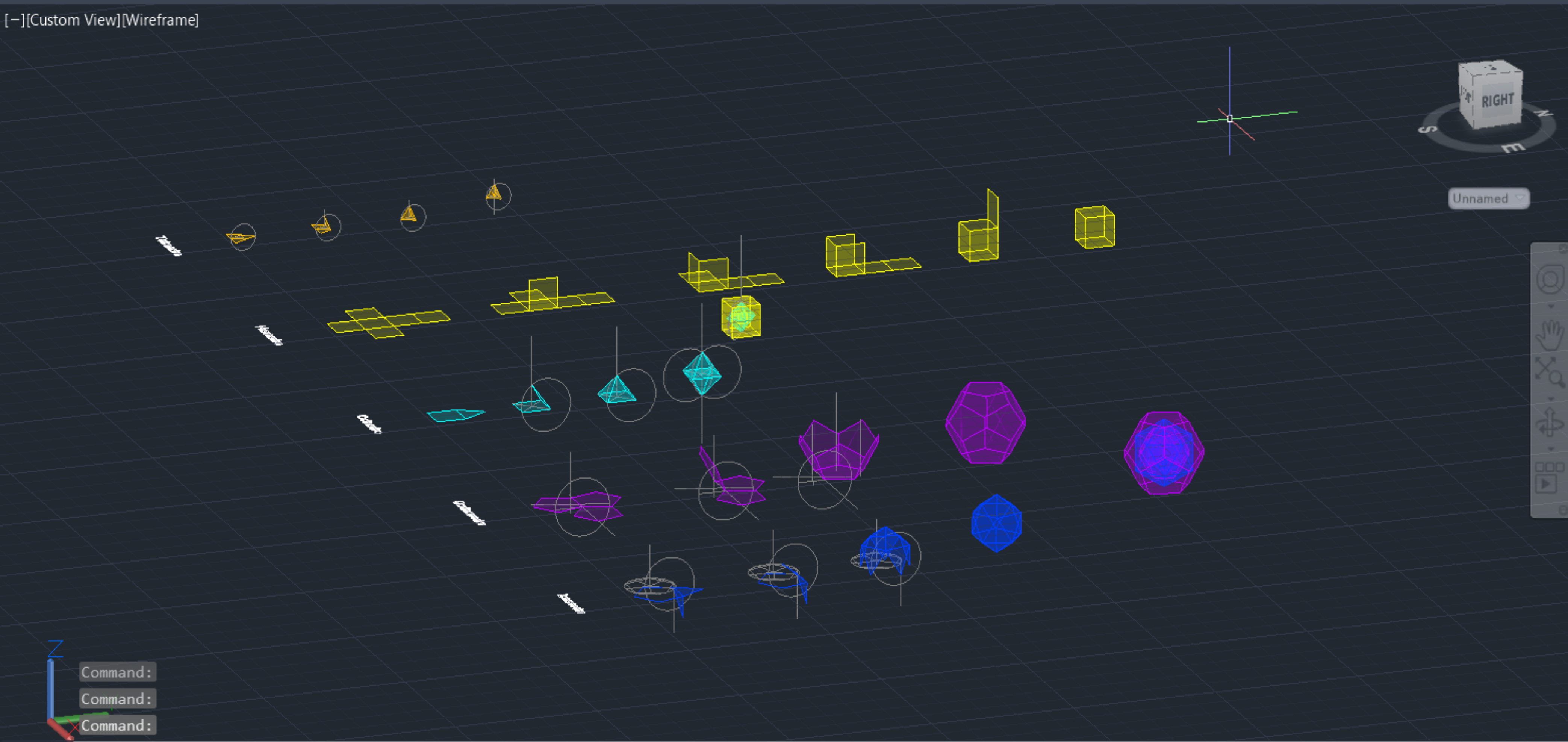
Autodesk AutoCAD 2024 3D doctaedros.dwg

File Edit View Insert Format Tools Draw Dimension Modify Parametric Window Help Express

Home Insert Annotate Parametric View Manage Output Add-ins Collaborate Express Tools Featured Apps

Line Polyline Circle Arc Move Rotate Trim Copy Mirror Fillet Stretch Scale Array Text Dimension Layer Properties Layers Match Layer Insert Match Properties Groups Measure Paste Base

Start 3D doctaedros* x



LAYER PROPERTIES MANAGER

Current layer: auxiliar Search for layer

S...	Name	O...	F...	L...	P...	Color	Linew...
0	0	Light	On	Lock	Print	White	Continuous
✓	auxiliar	Light	On	Lock	Print	Grey	Continuous
	dodecaedro	Light	On	Lock	Print	Magenta	Continuous
	hexaedro	Light	On	Lock	Print	Yellow	Continuous
	icosaedro	Light	On	Lock	Print	Blue	Continuous
	octaedro	Light	On	Lock	Print	Cyan	Continuous
	tetraedro	Light	On	Lock	Print	Orange	Continuous
	texto	Light	On	Lock	Print	White	Continuous

All: 8 layers displayed of 8 total layers

Command: Command: Command:

Type a command

Model Layout1 Layout2

MODEL # 1:1