

# **Laboratório de Arquitectura I**

**1º semestre**

Joana Alves

**PERCORRER  
PERMANECER  
CONTEMPLAR**

**Local de Estudo**

**S.<sup>a</sup> da Graça**

**Proposta**

# Obras

Eduardo Nery:

Sol, 1971

120 x 120 x 5 cm

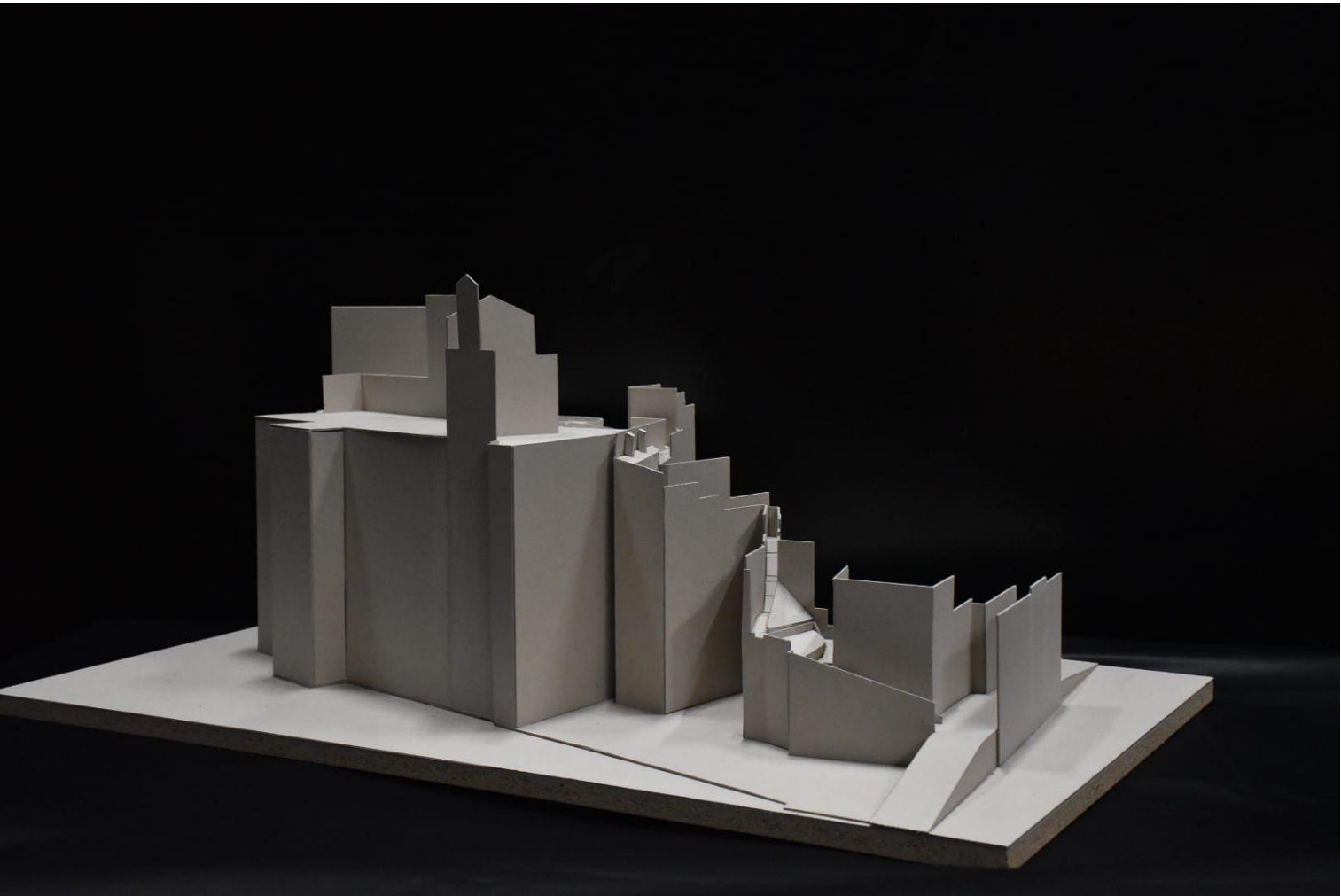


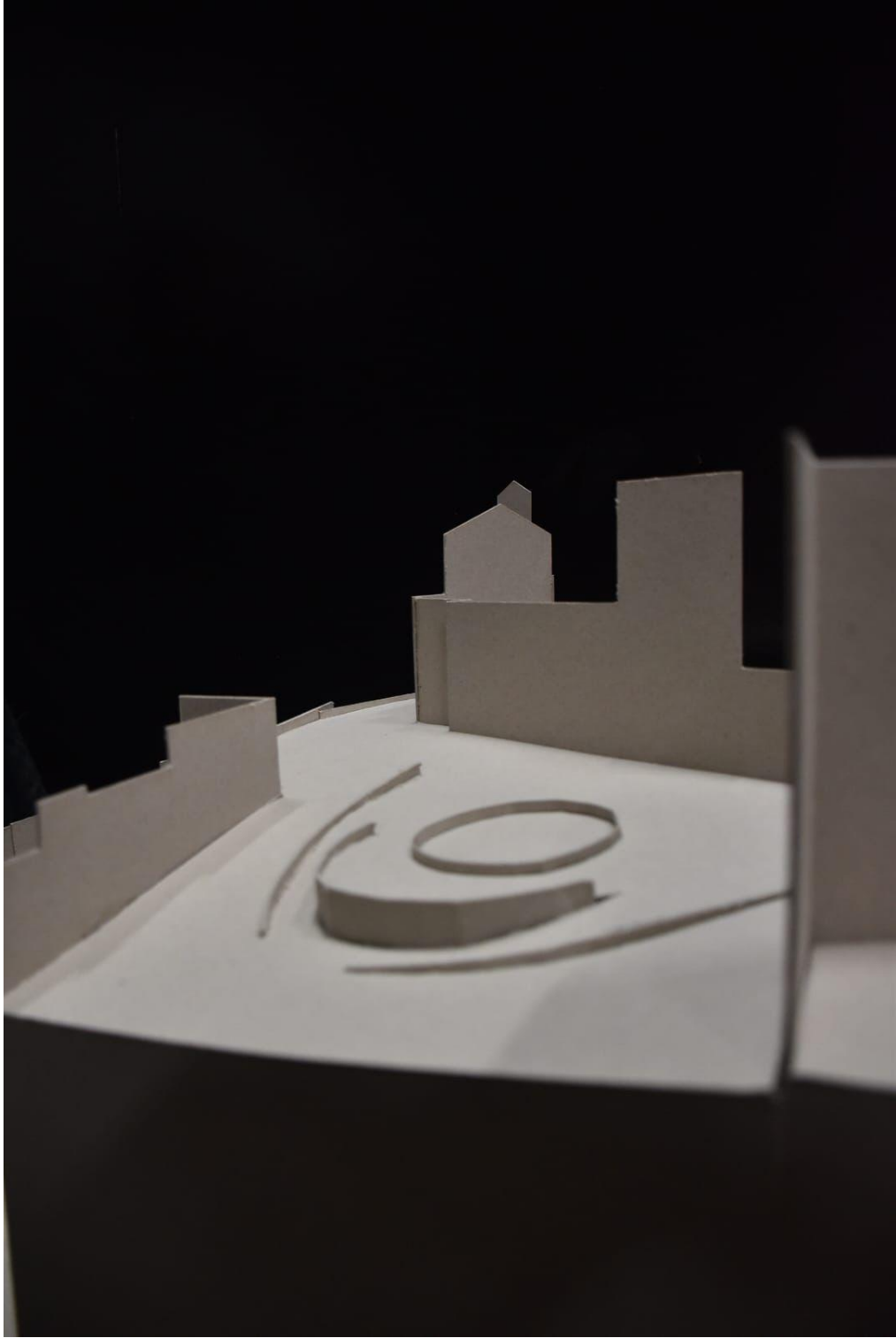
Trânsito celeste,  
1972

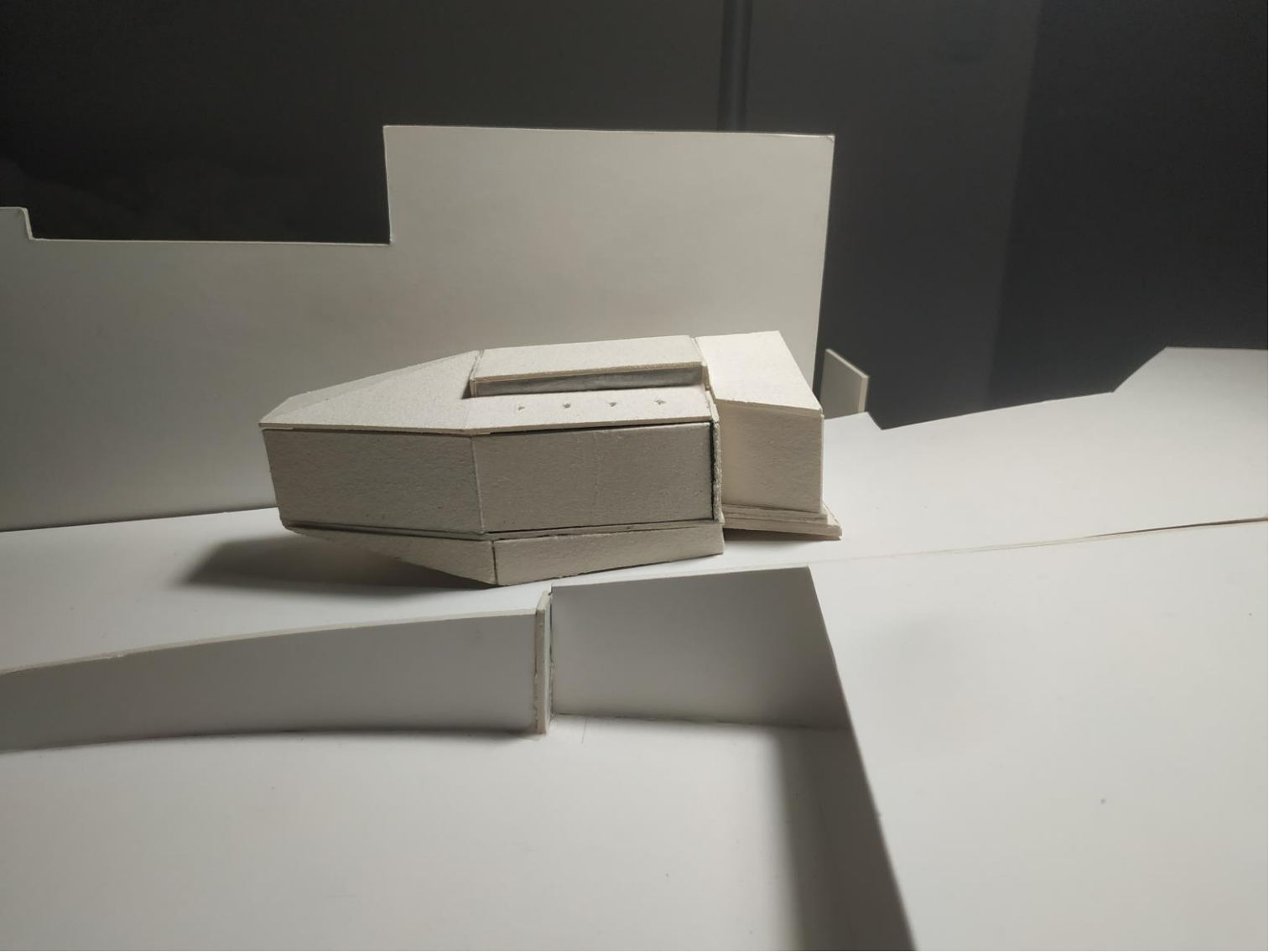
110 x 110 x 6 cm



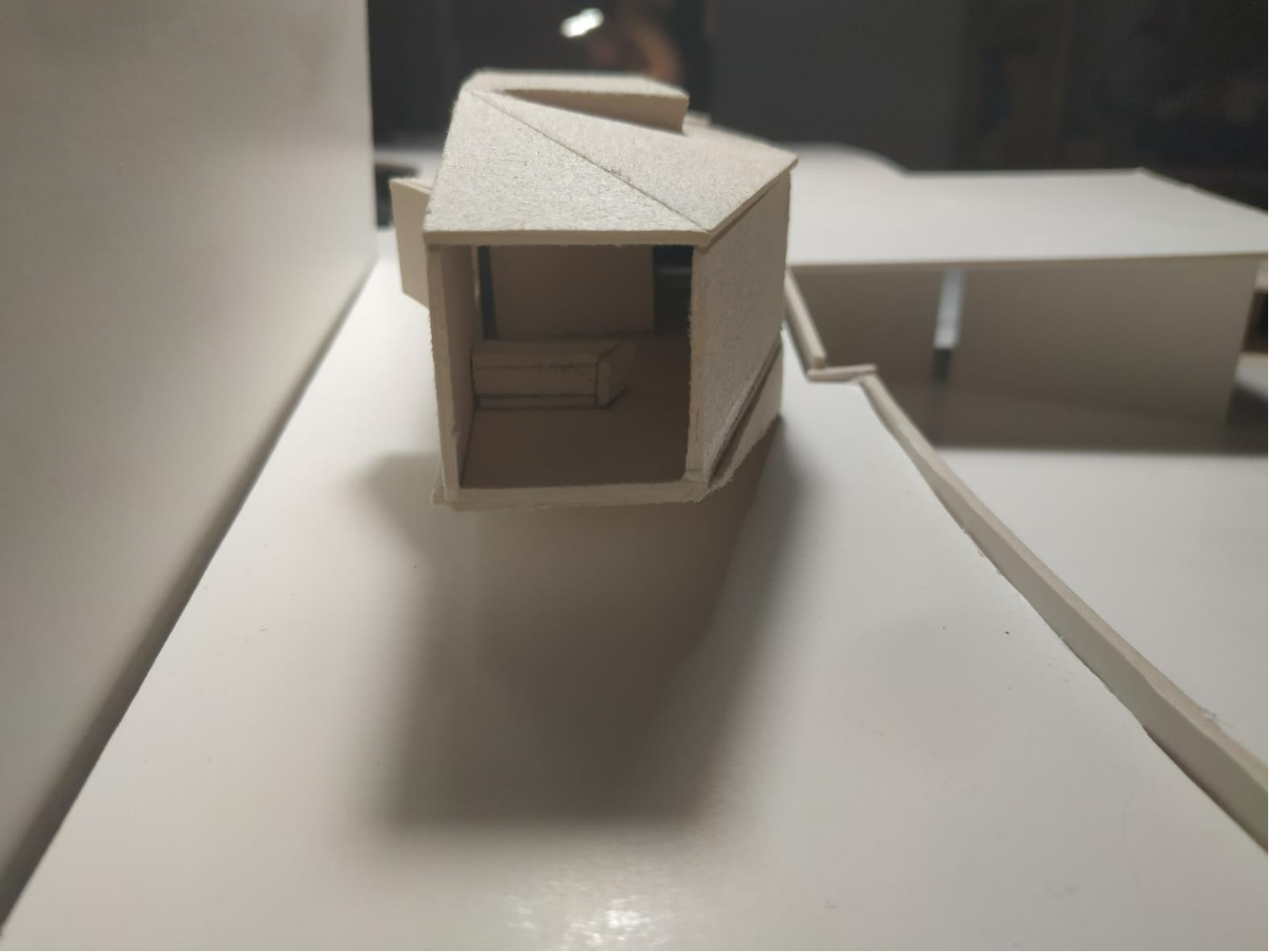
**contexto**













# PROJETO FINAL

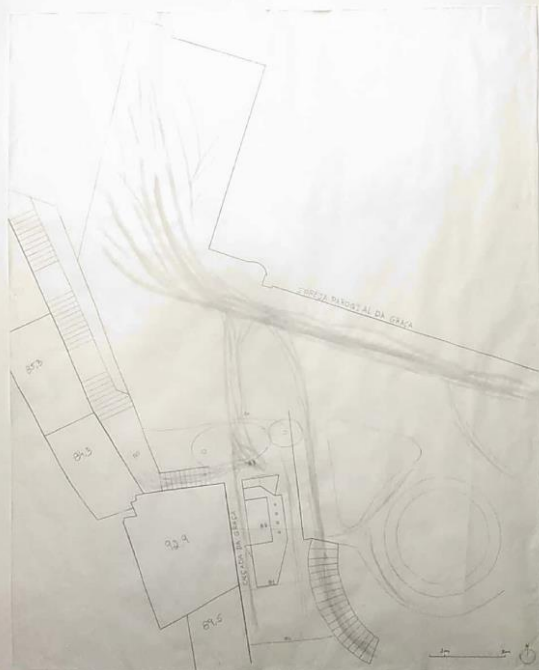


## OBRAS

Eduardo Nery

- SOL, 1971  
(130 x 130 x 5) cm
- Trânsito Celeste, 1972  
(110 x 110 x 6) cm

## LOCAL



**Nota:** os desenhos devem ser uma simples digitalização, ou fotografia devidamente trabalhada graficamente, dos já produzidos em papel esquisso e entregues ao professor

# CARACOL DA GRAÇA



TURMABARQ.Int. Gabriele Almeida, Henrique Soares, João Afonso, Riquel Pinto 2021/2022

**Nota:** os desenhos devem ser uma simples digitalização, ou fotografia devidamente trabalhada graficamente, dos já produzidos em papel esquisso e entregues ao professor

# CARACOL DA GRAÇA



MIRADOURO.

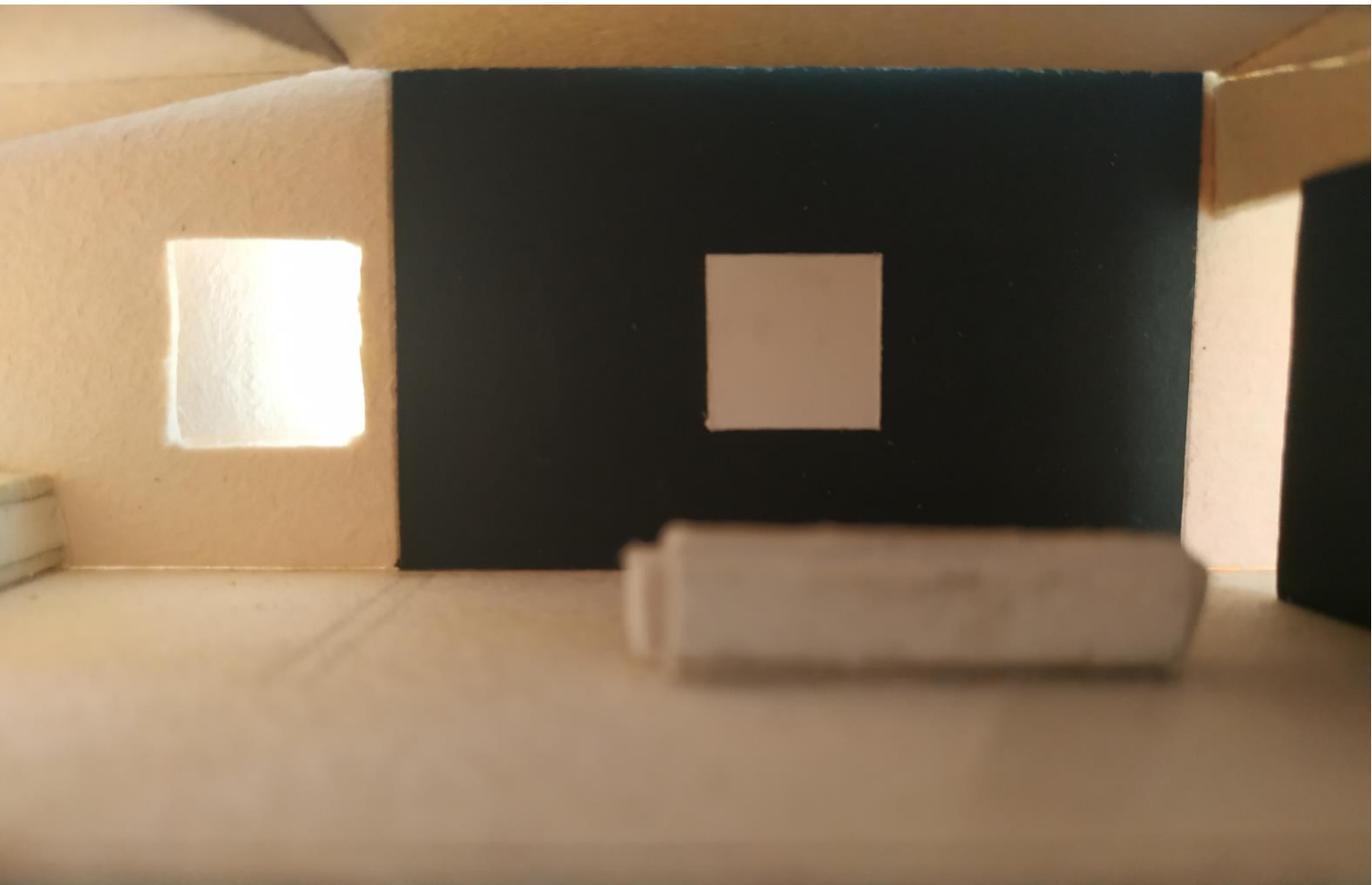


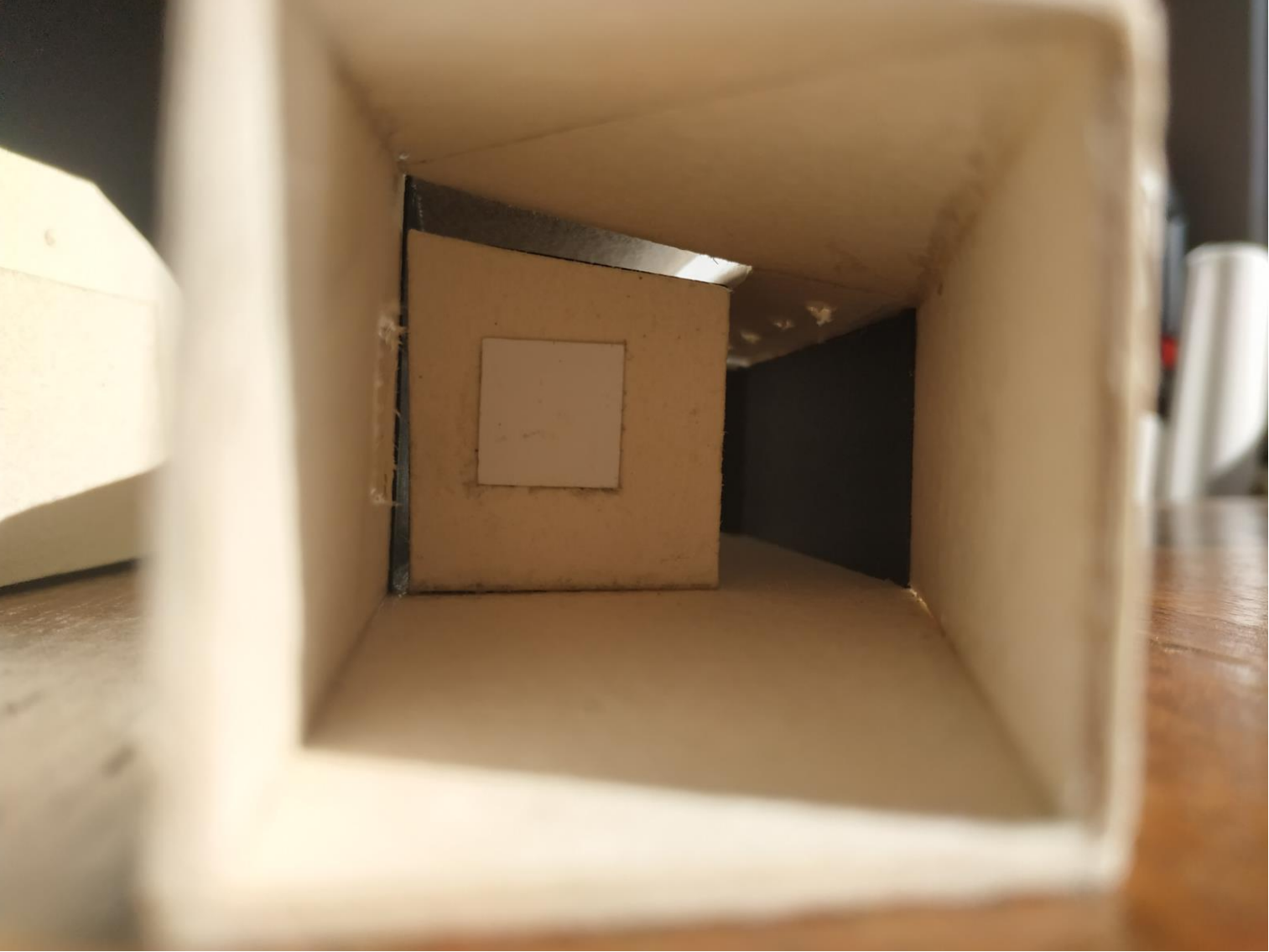
**objecto**

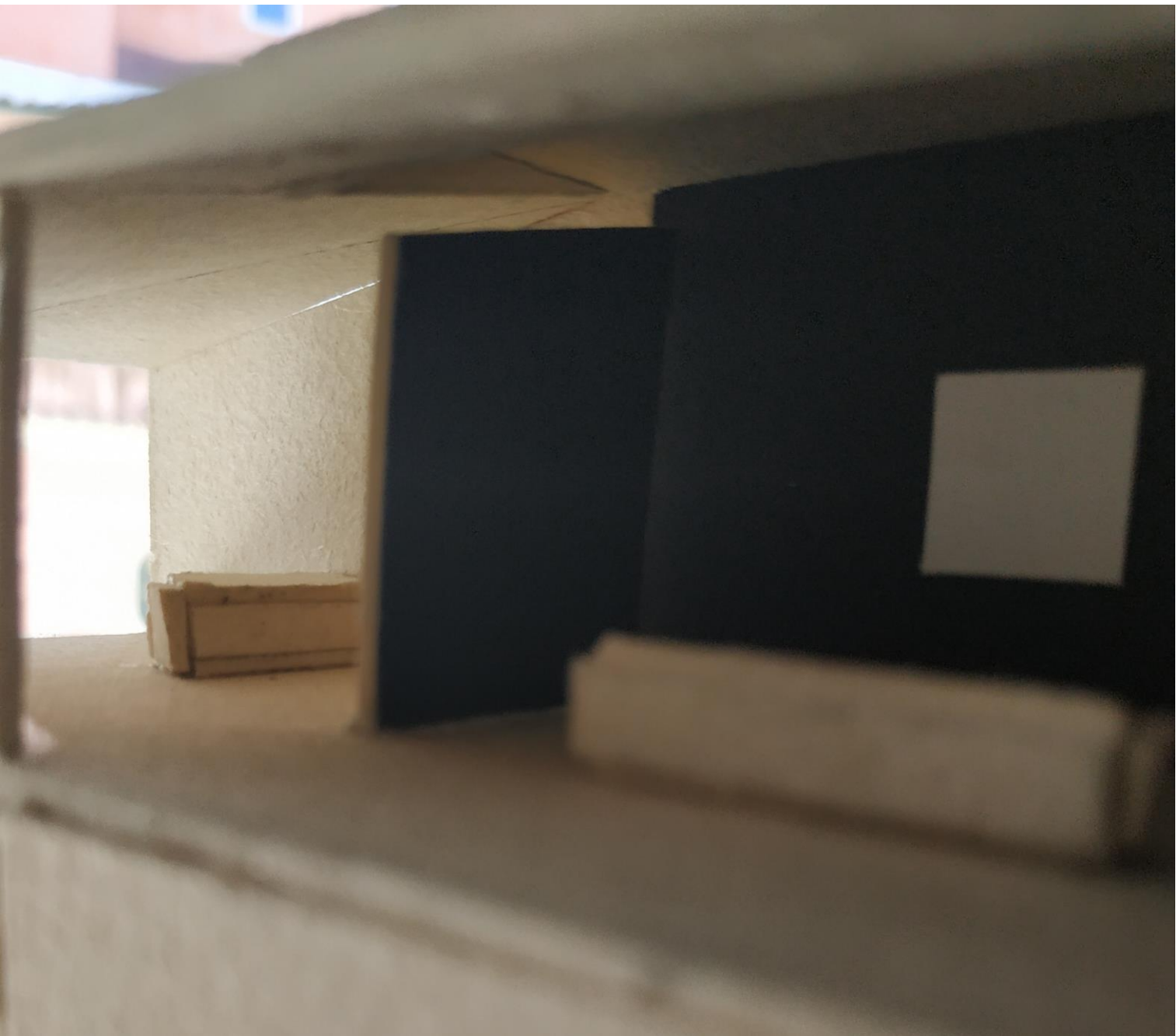






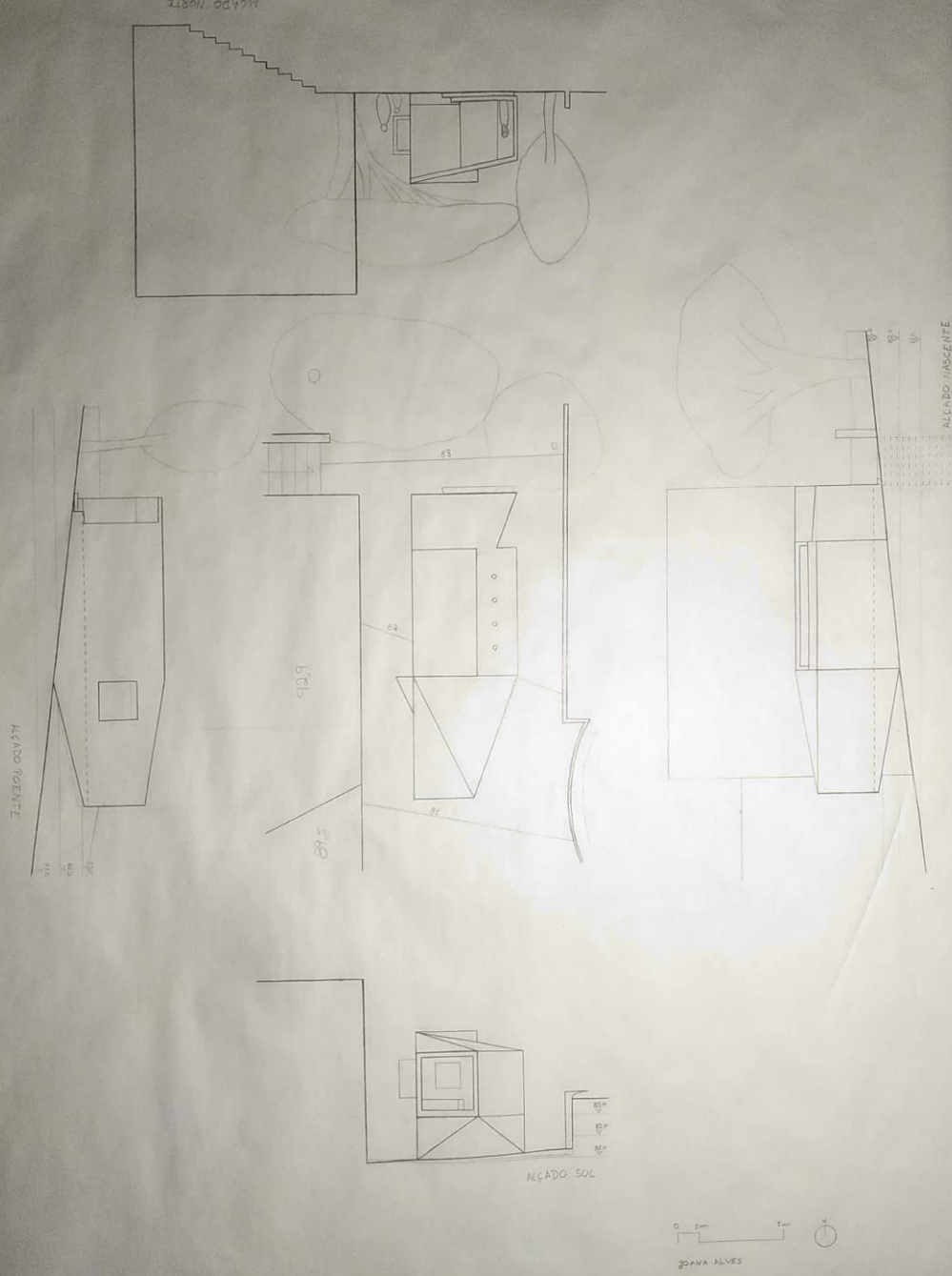






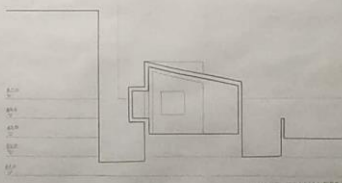
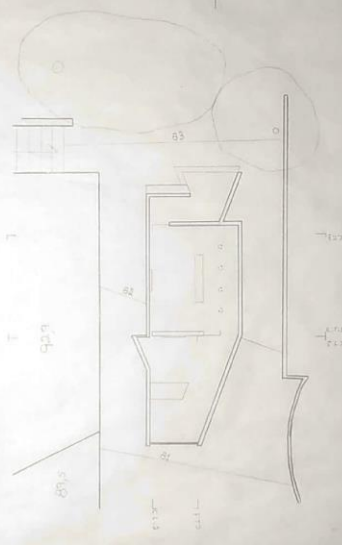
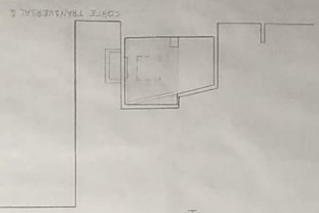
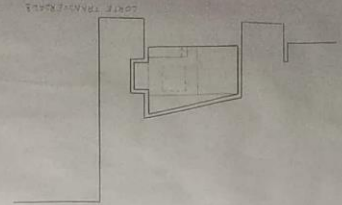






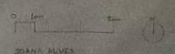
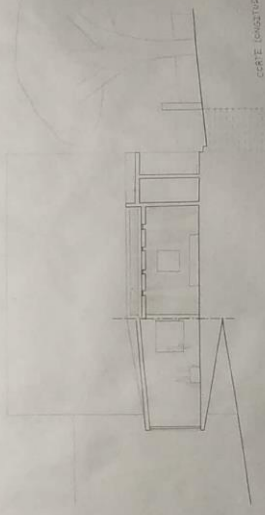
**Nota:** os desenhos devem ser uma simples digitalização, ou fotografia devidamente trabalhada graficamente, dos já produzidos em papel esquisso e entregues ao professor

CORTE LONGITUDINAL 1



CORTE TRANSVERSAL 1

CORTE LONGITUDINAL 2



JOSHA ALVES

