

Anastásia Burneuskaya | nº 20201260
Catarina Freitas | nº 20201329
Hélio Tavares | nº 20201275
Margarida Terras | nº20201228
Rita Valadas | nº 20201246
Turma 3F

MUSEU DE ARTE DE SÃO PAULO

Arquiteta Lina Bo Bardi



Modelação e Visualização Tridimensional em Arquitectura Trabalho Prático – Fase 1 - grupo

20201228

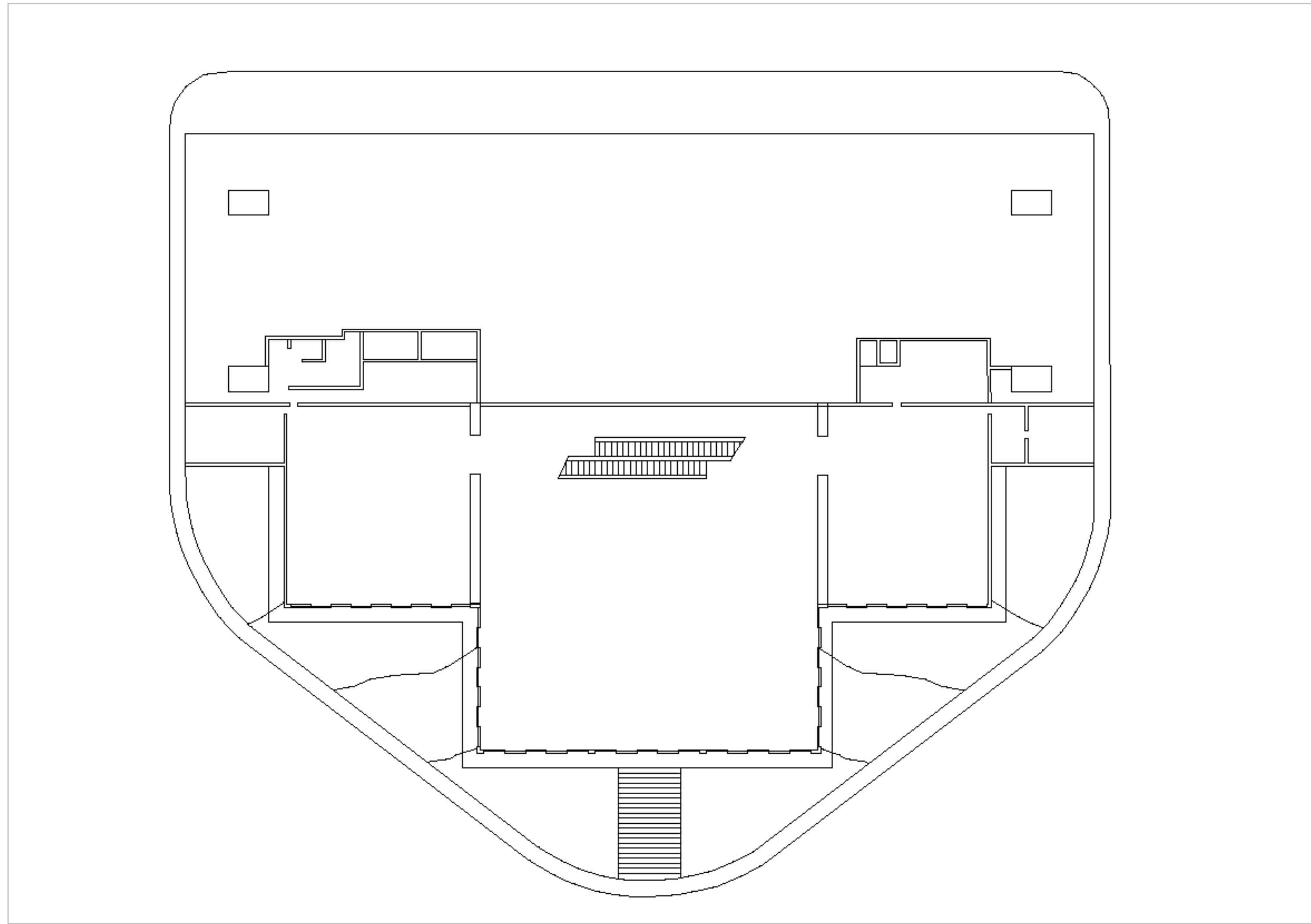


Margarida Terras da Fonseca

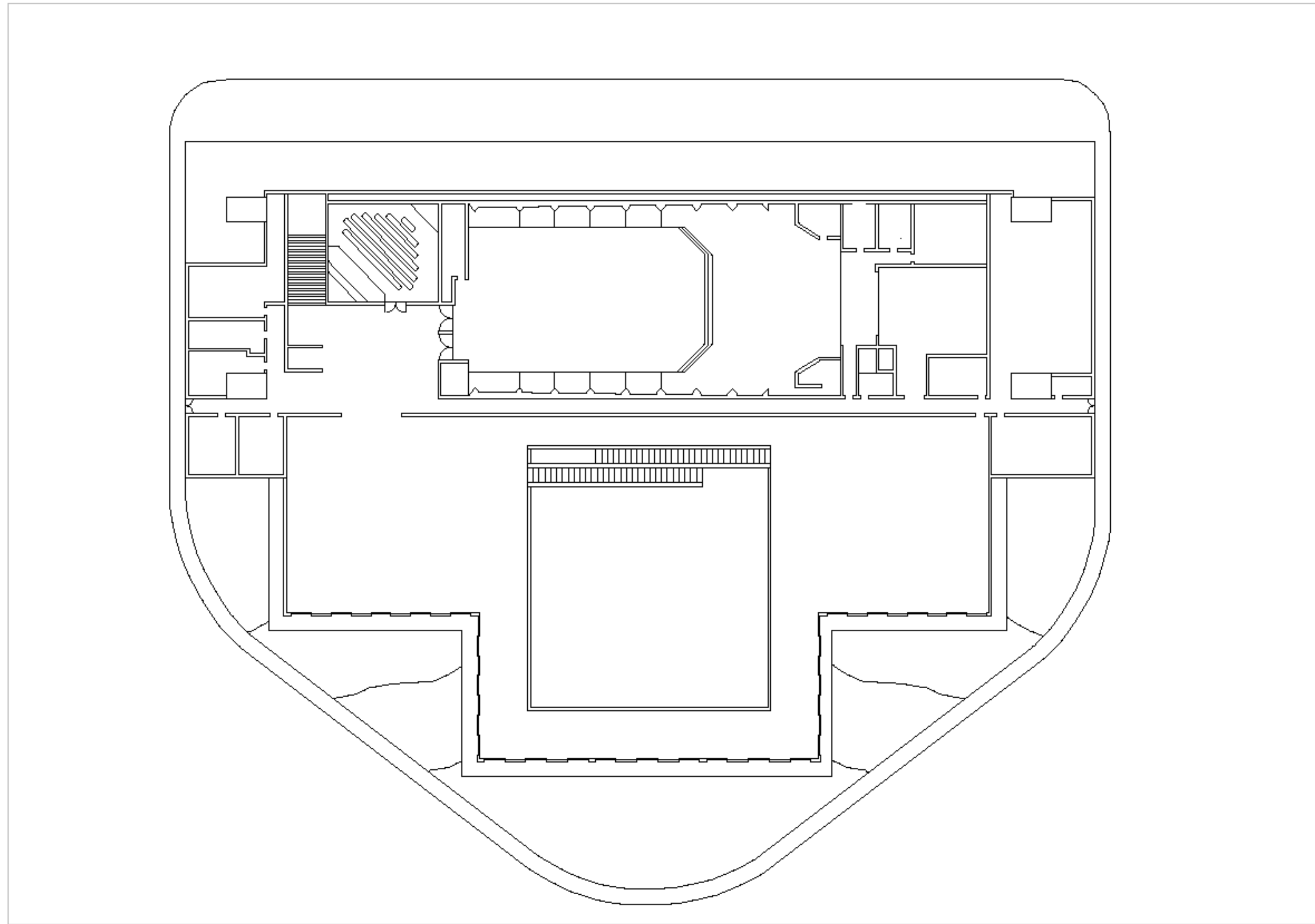
ÍNDICE

- Desenhos técnicos _____ Slides
- Axonometria do conjunto _____ Slide
- 3D do edifício _____ Slide

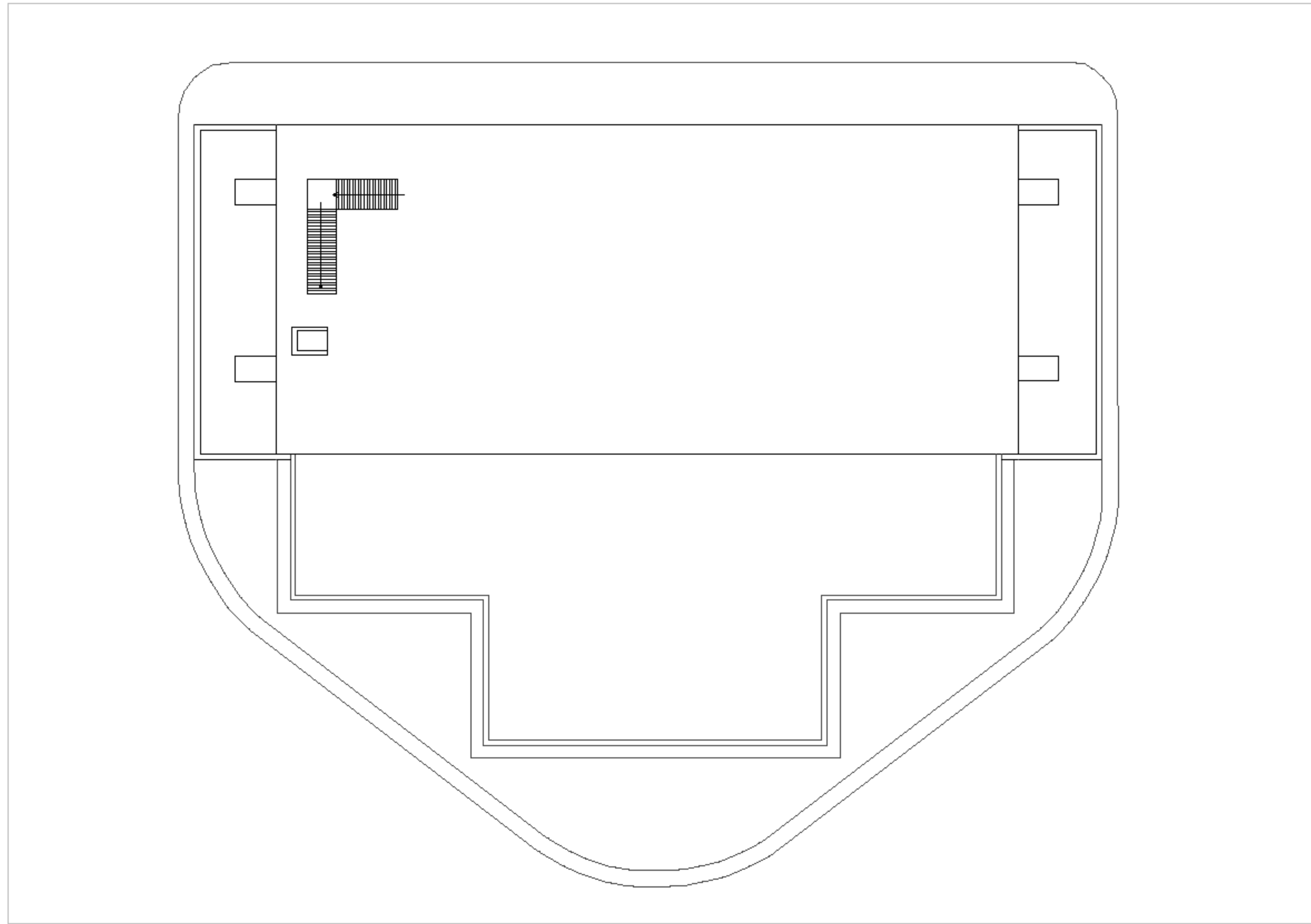
1. Desenhos técnicos



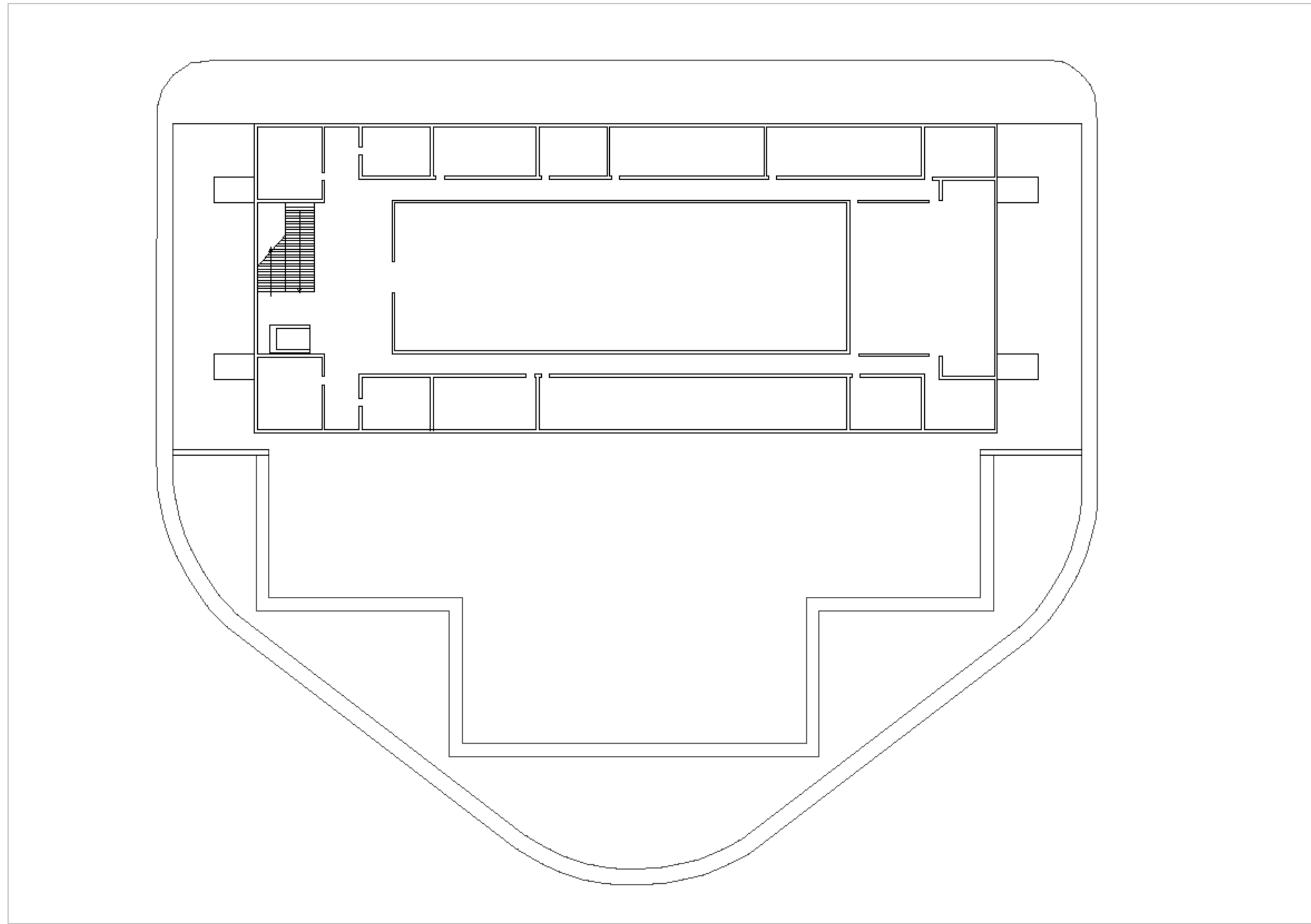
1.1. Planta de piso -2



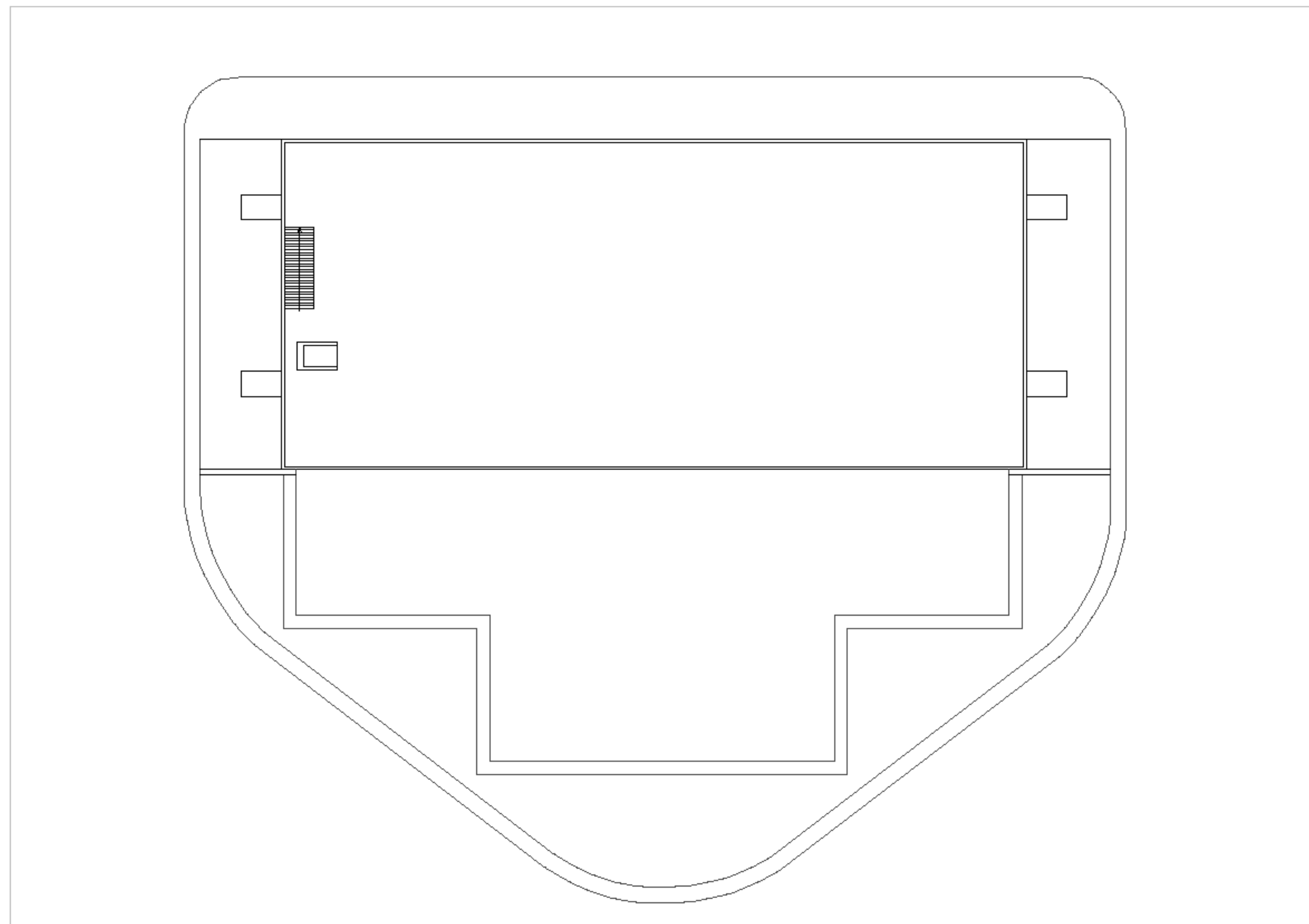
1.2. Planta de piso -1



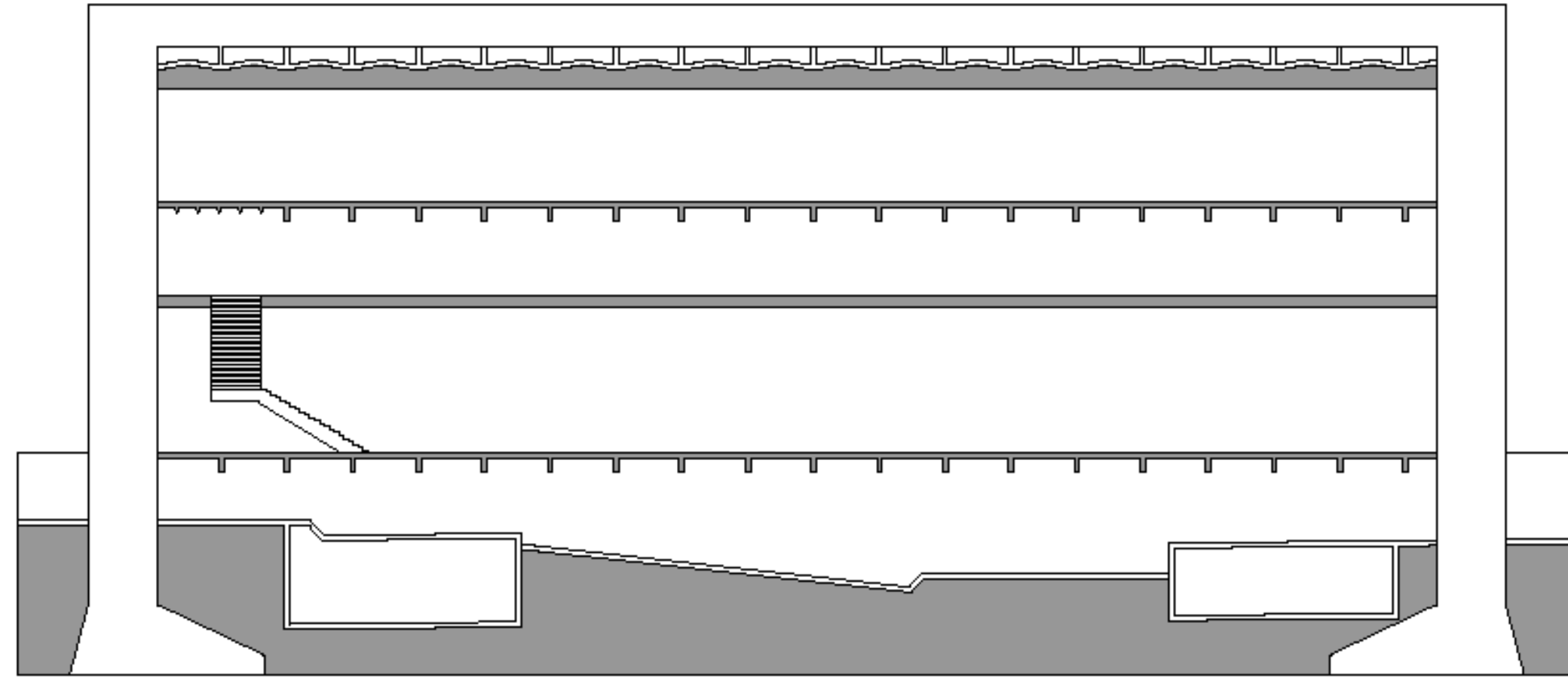
1.3. Planta de piso 0



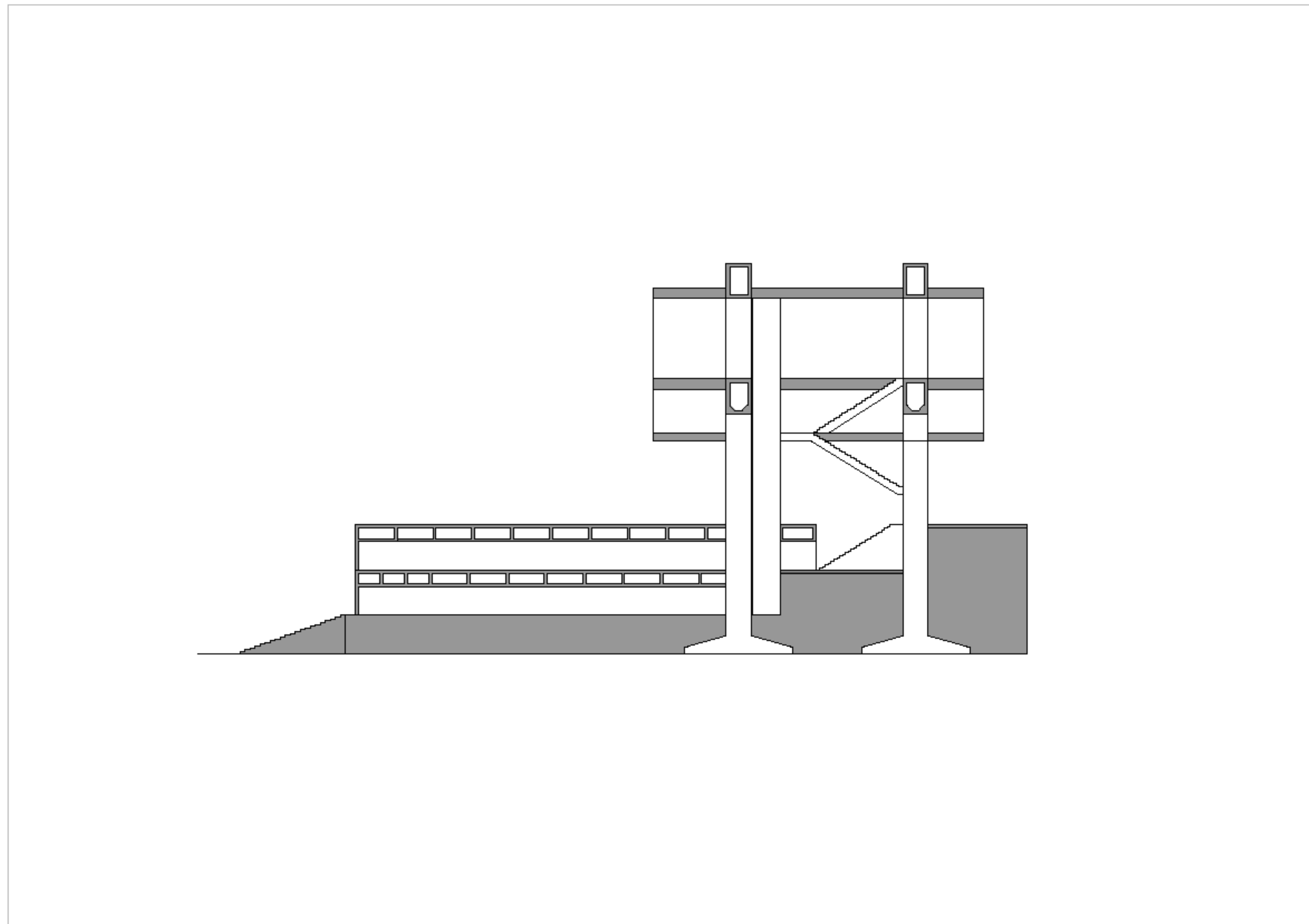
1.4. Planta de piso 1



1.5. Planta de piso 2

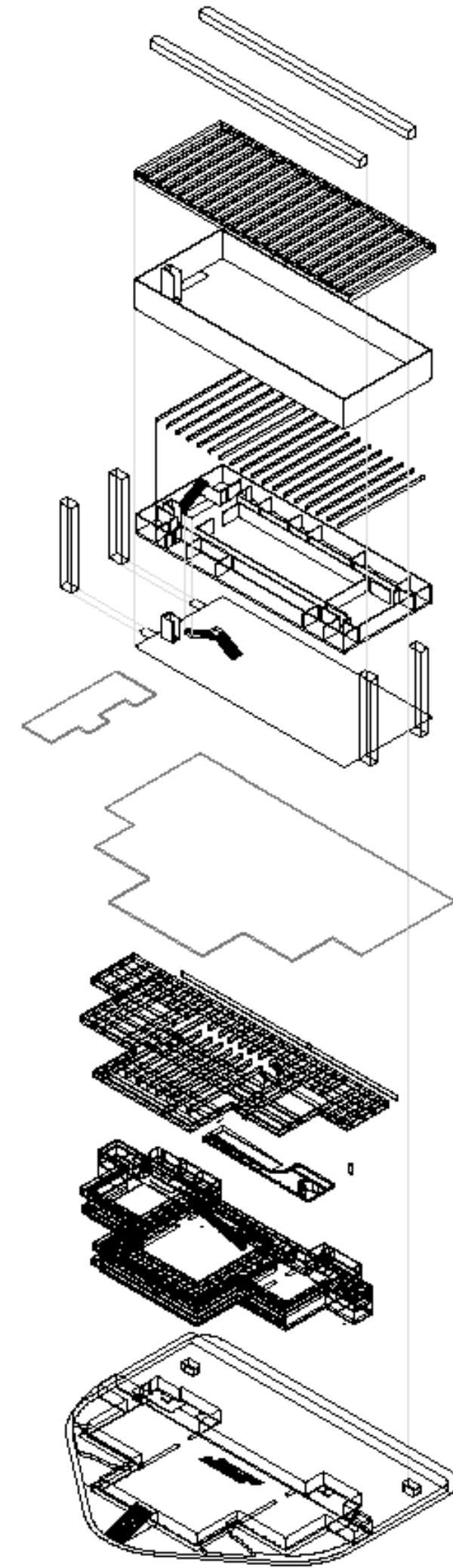


1.6. Corte longitudinal



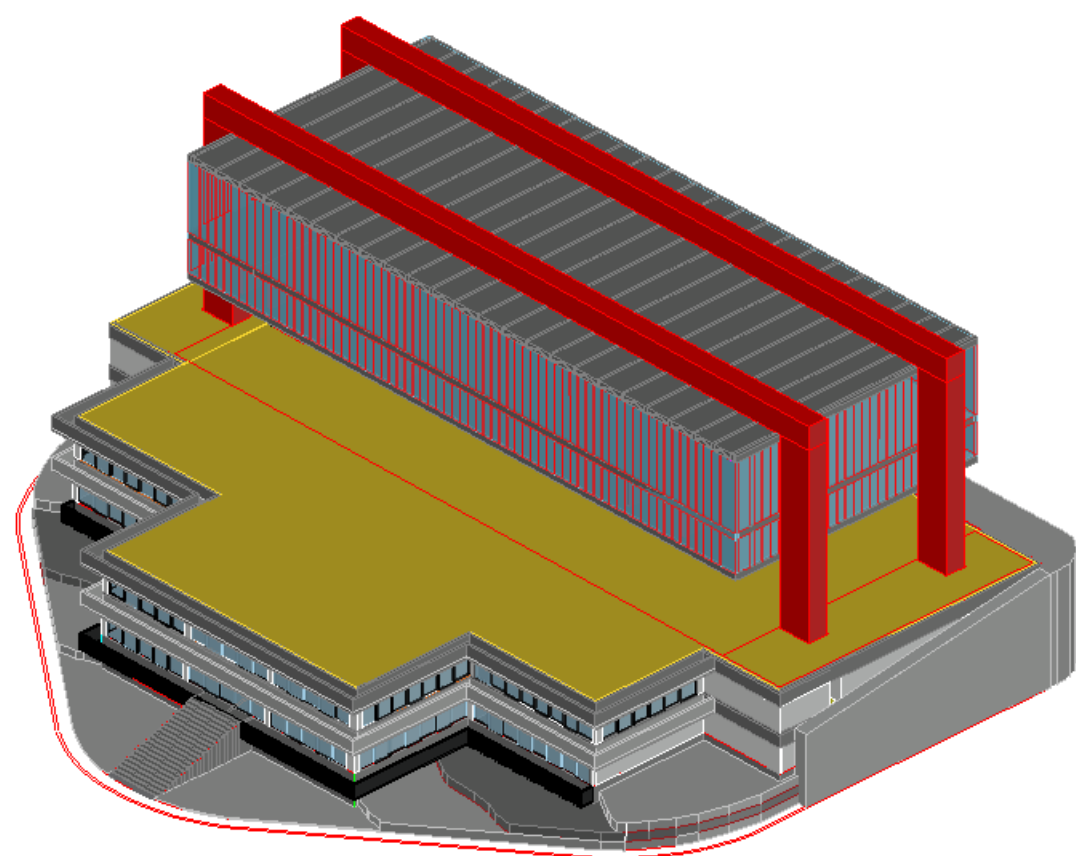
1.5. Corte transversal

2. Axonometria do conjunto

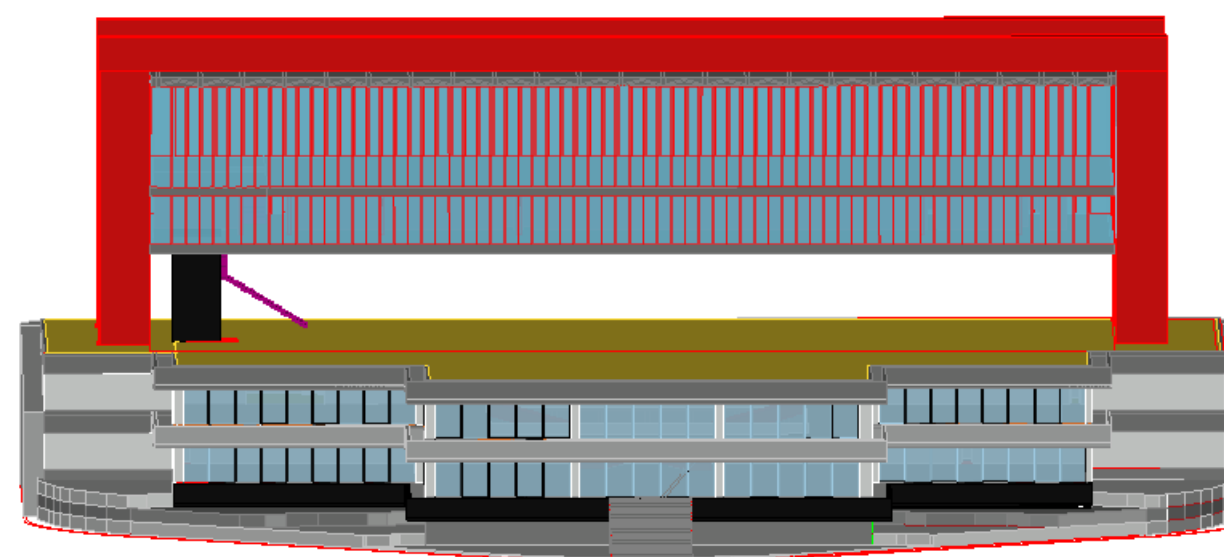


2. Axonometria do conjunto

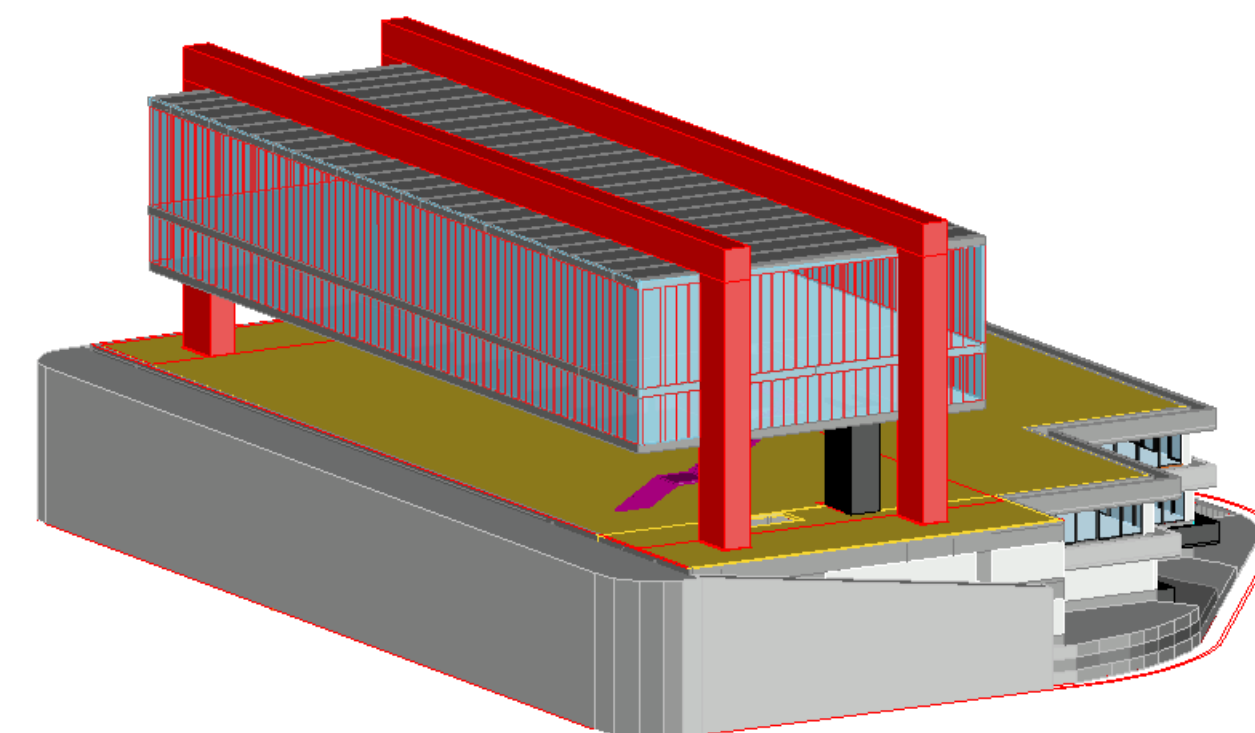
3. 3D do edifício



Vista norte

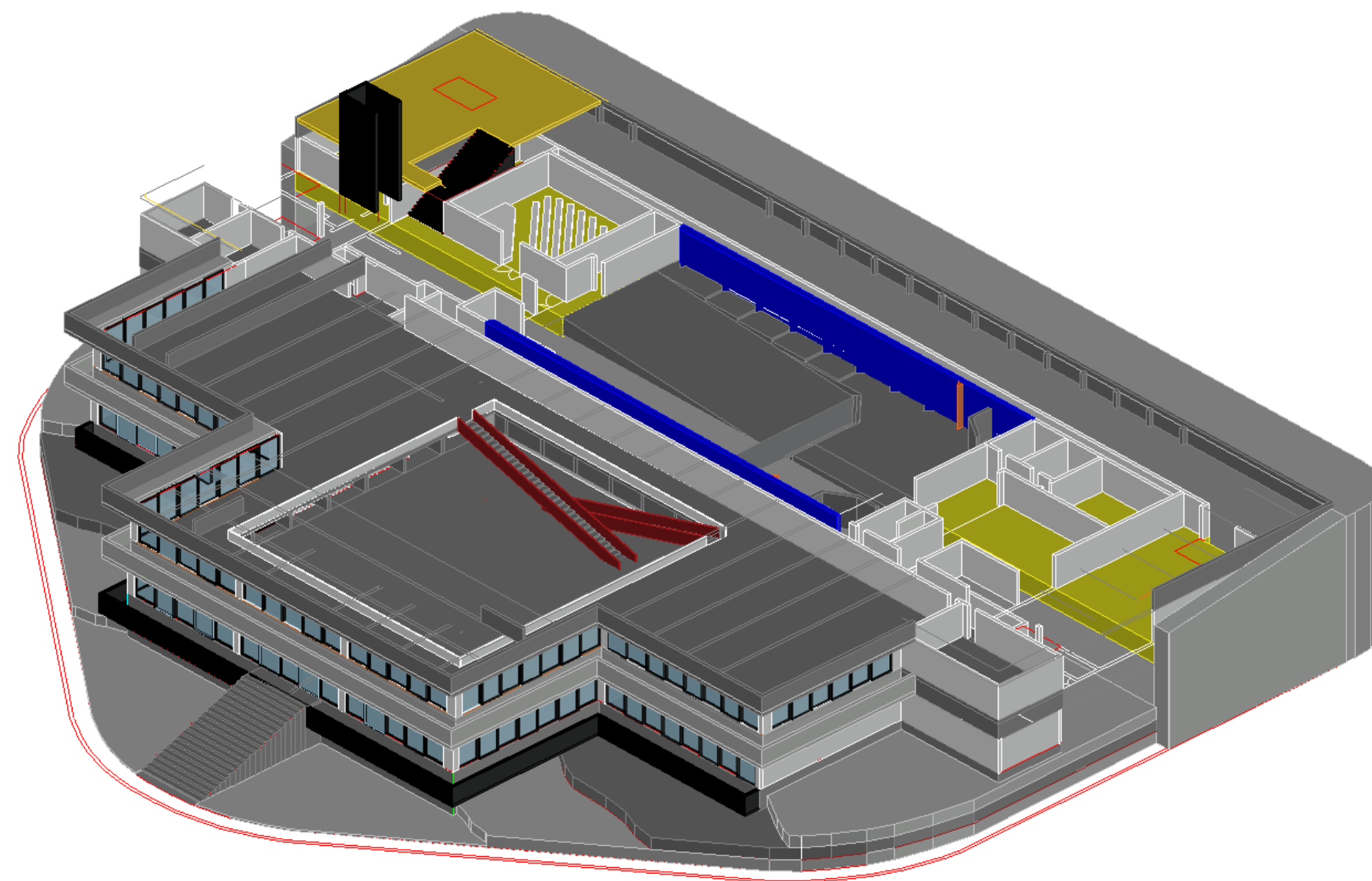


Frente - vista nordeste

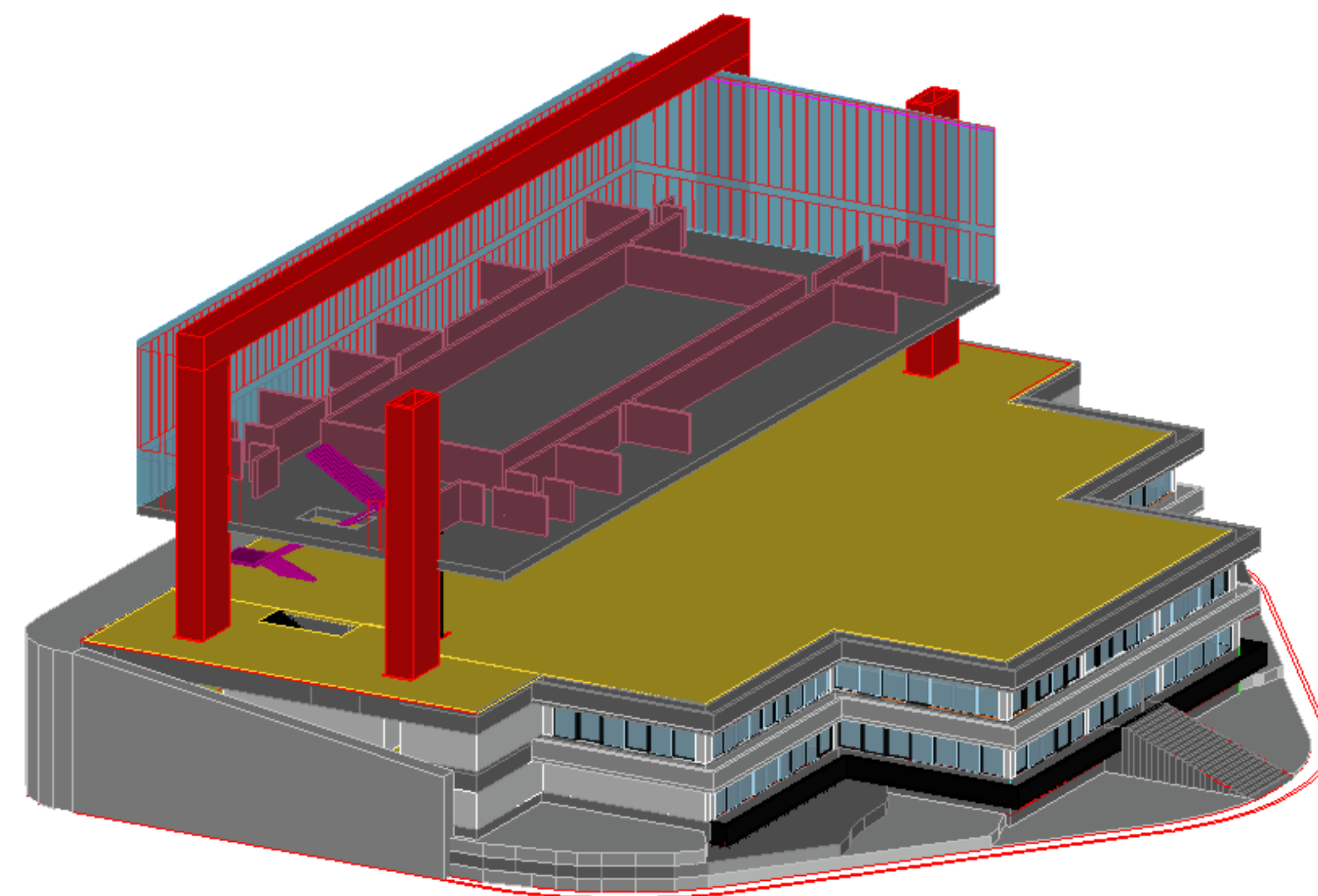


Vista sudoeste

3.1. Exterior — 3 pontos de vista



Piso -1



Piso 1

3.2. Detalhes desconstruídos