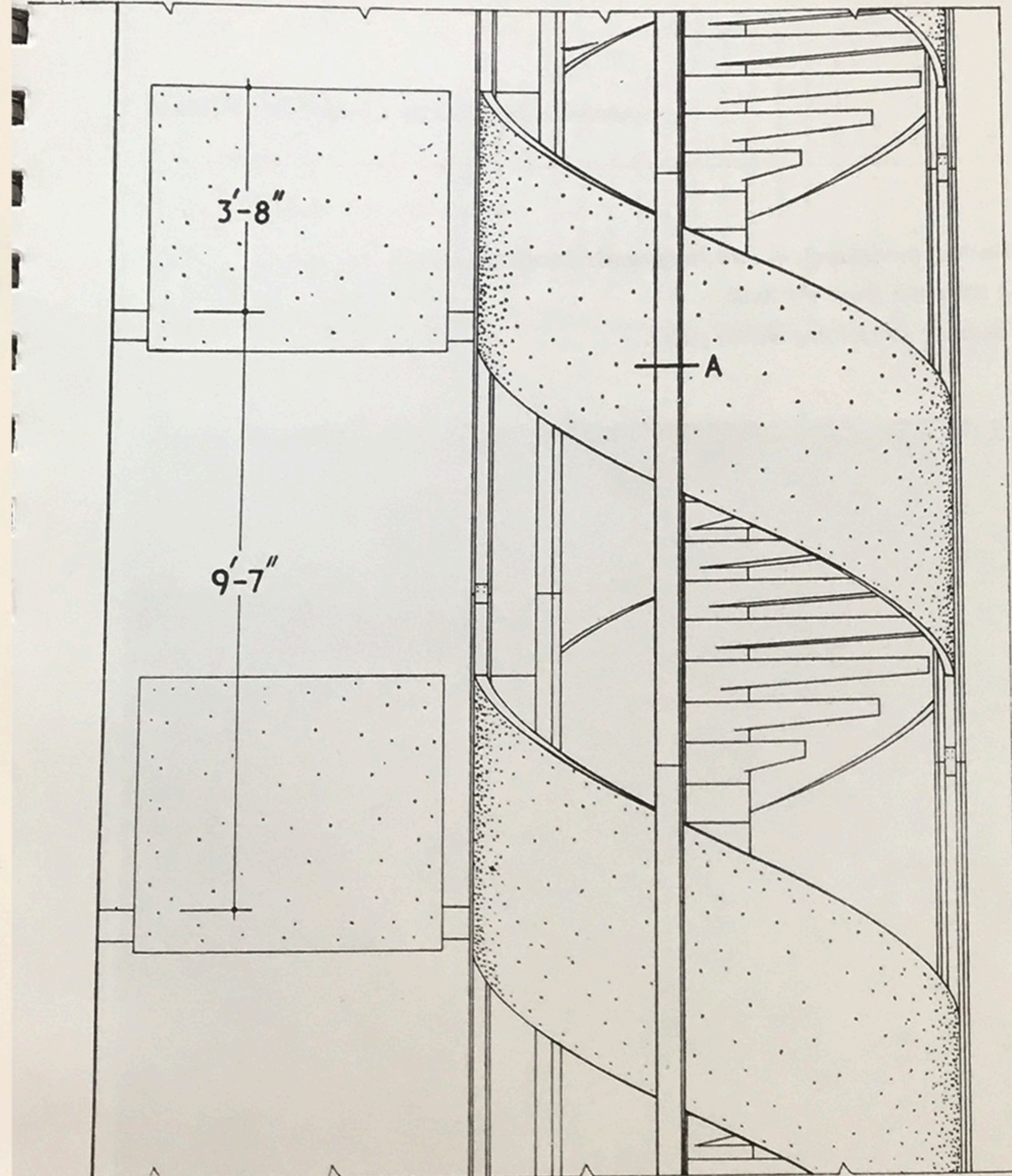


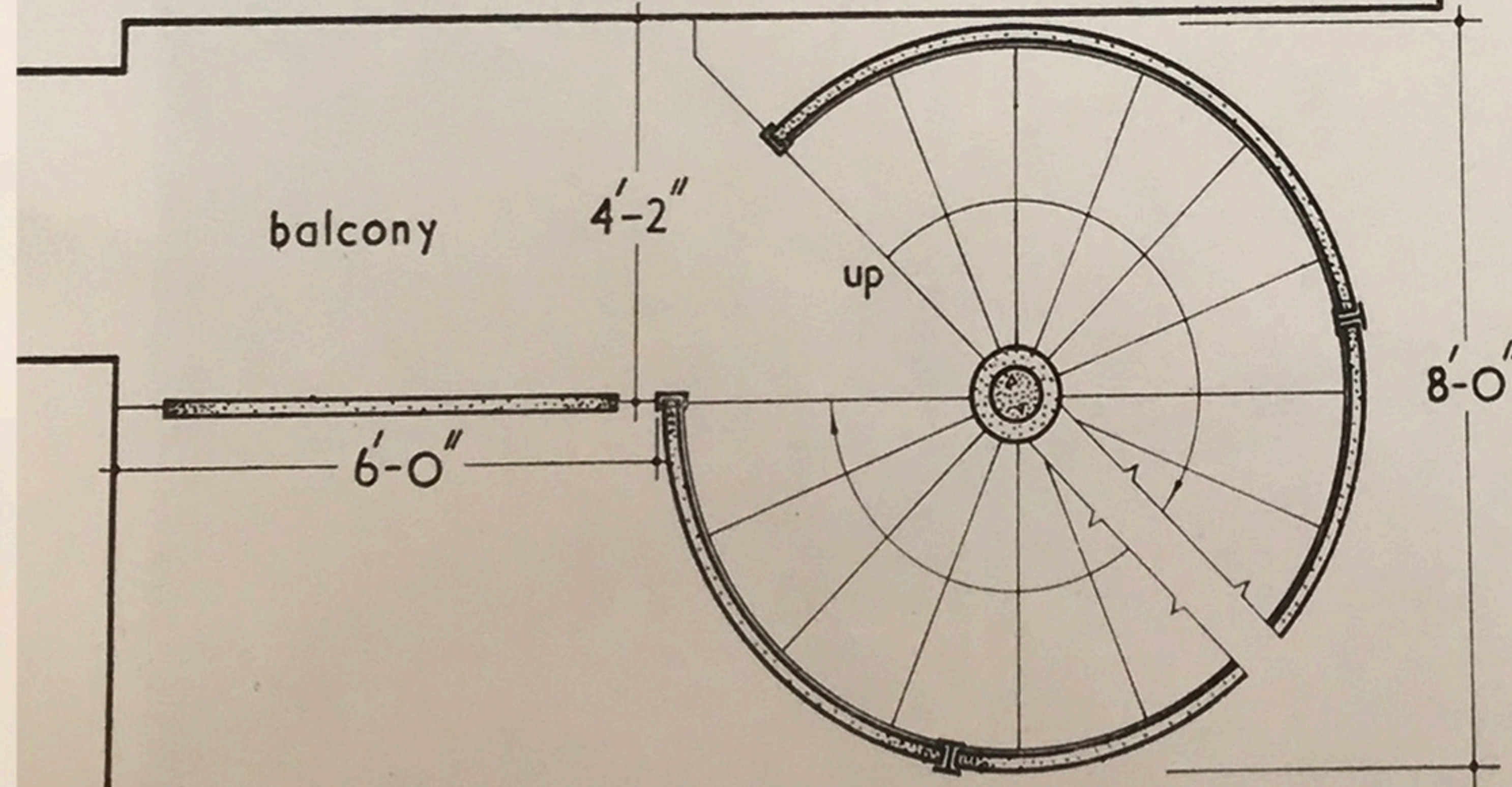
FIRE ESCAPE STAIRCASE: TOWER IN GENEVA, SWITZERLAND
 DESIGNED BY A. BORDIGONI, J. GROS, A. DE SAUSSURE
 AND R. FLEURY

(Material supplied by Dariush Borbor)

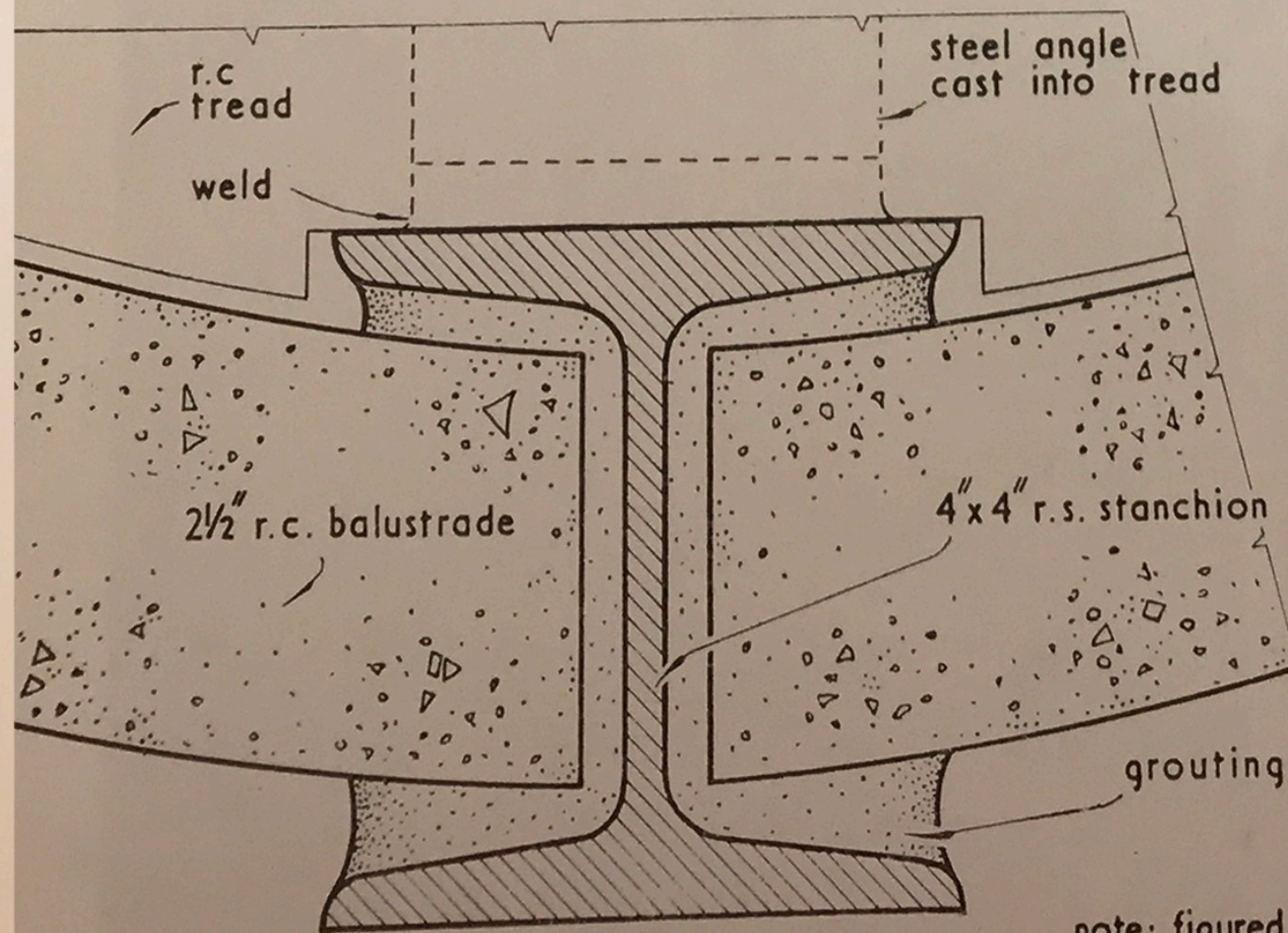
The erection sequence was, first, to fix the precast spiral treads; second, to weld the steel uprights to steel angles cast into the treads taking one rise at a time; third, to lower each curved precast baluster slab on to steel angles welded to the flanges of the uprights and grout in. A further length of steel upright was then bolted on and the cycle repeated. English readers will envy the quality and precision of the curved panels.



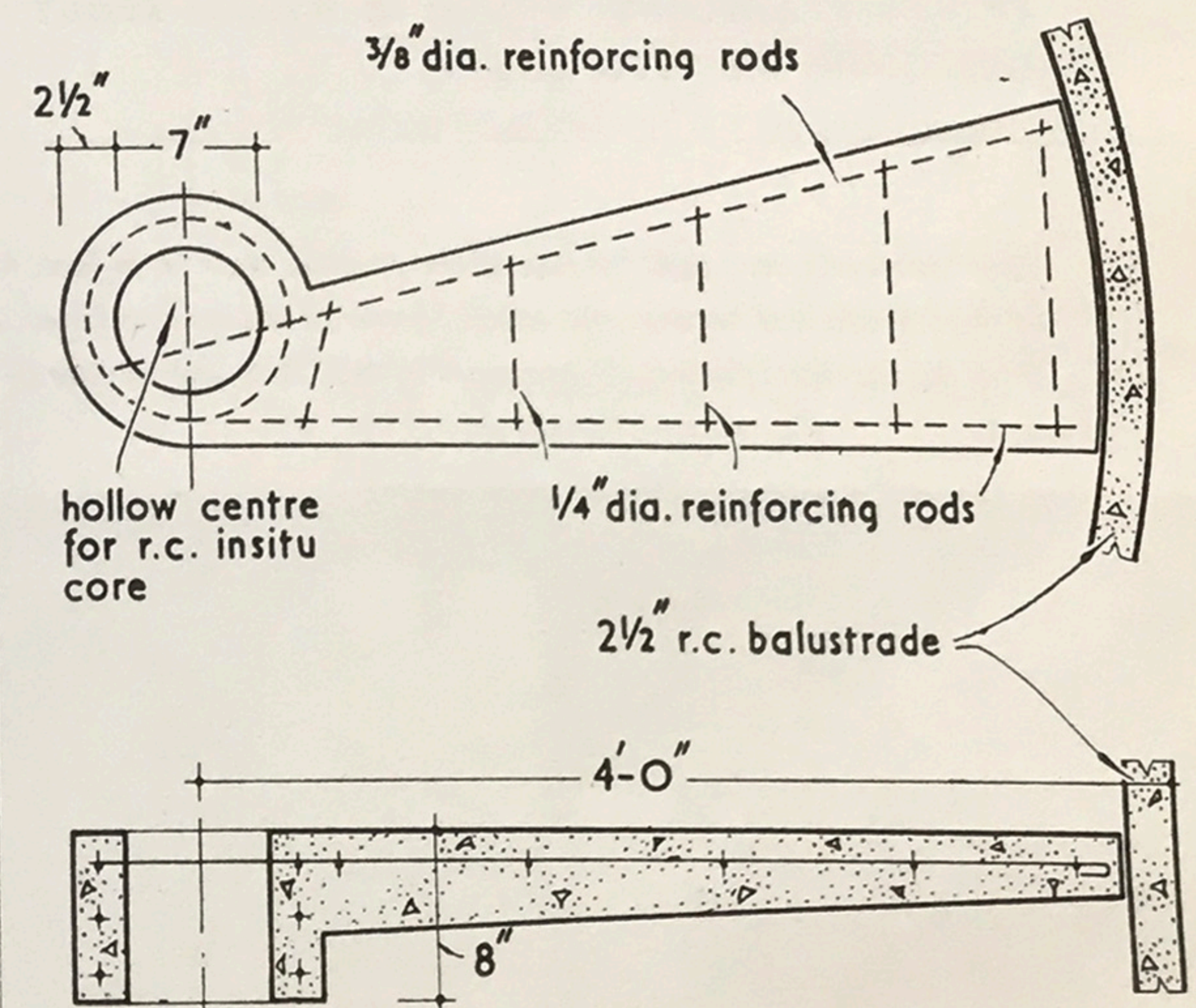
ELEVATION.



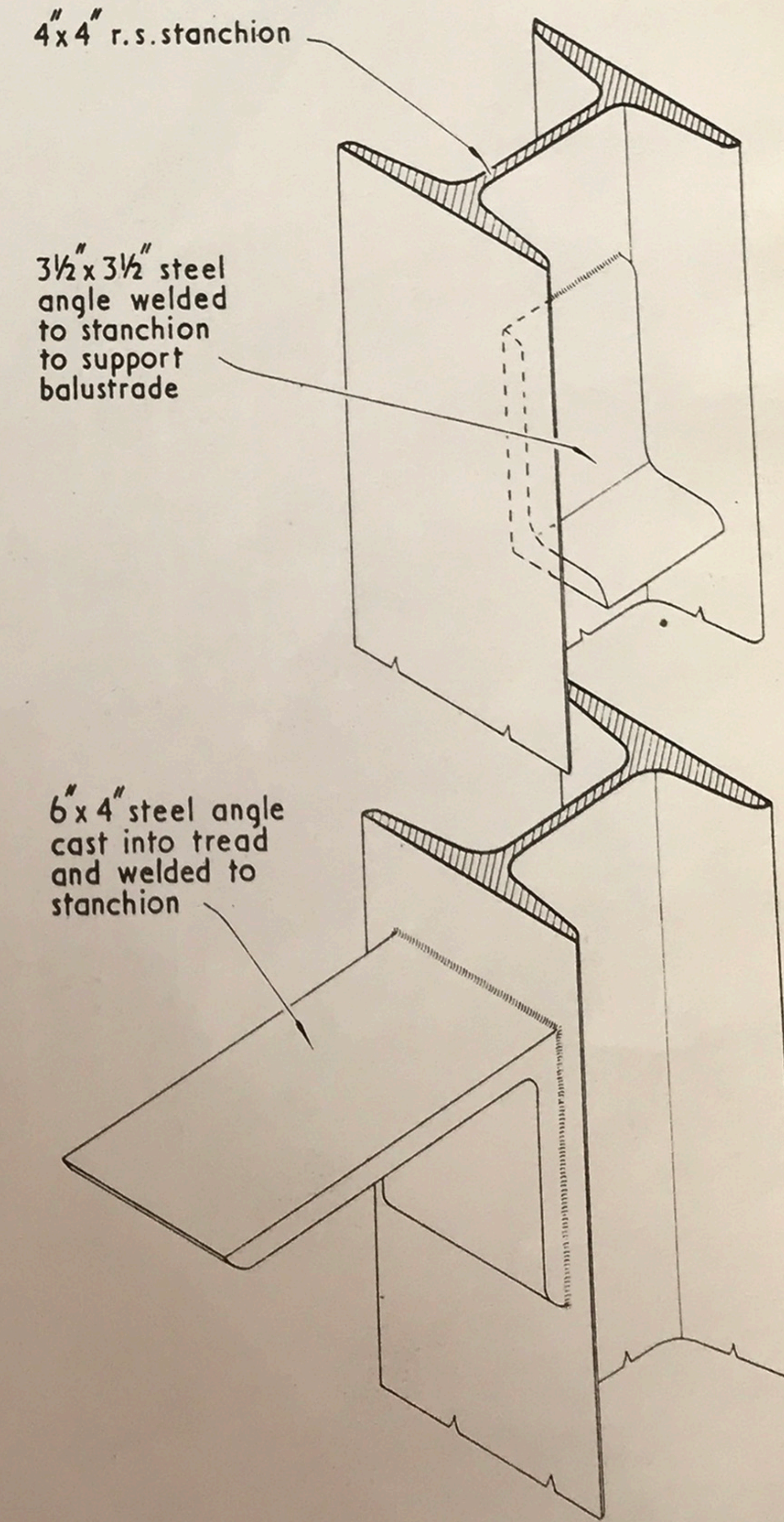
PLAN. scale 1/4" = 1'-0"



PLAN AT A. scale 1/2 full size



PLAN AND SECTION OF TYPICAL TREAD. scale 3/4" = 1'-0"



DETAIL OF STRUCTURAL STEELWORK. scale 1/4 full size

note: figured dimensions in feet and inches are approximate