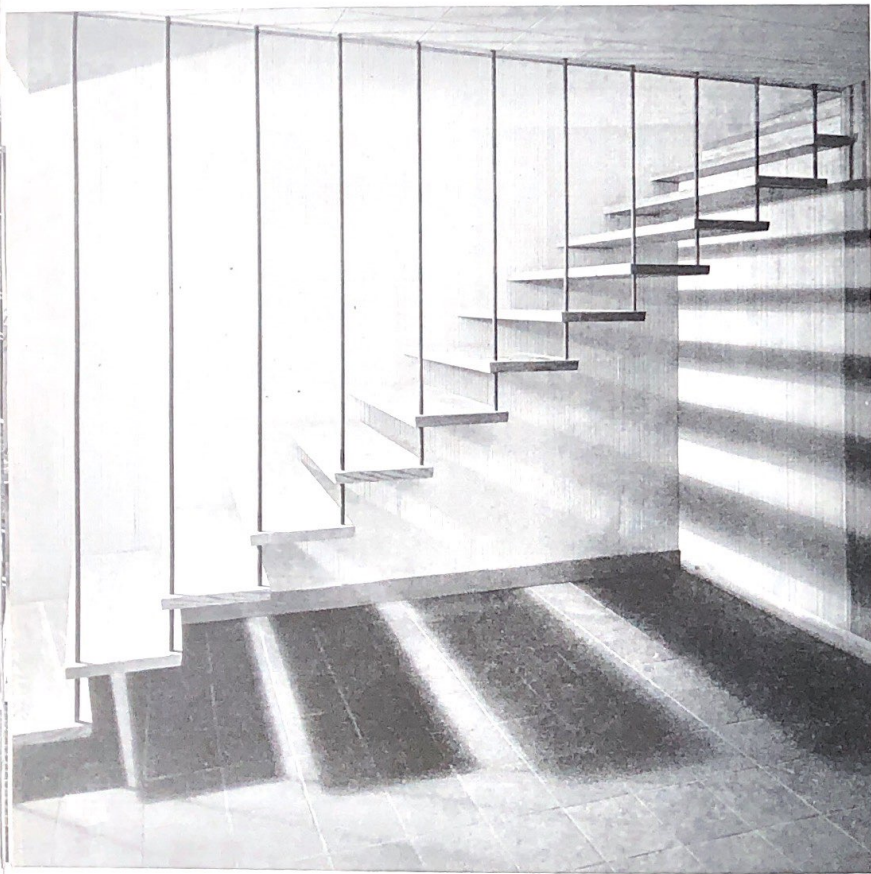


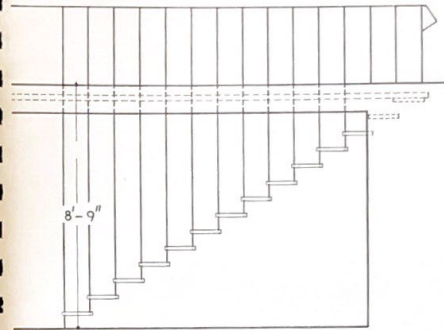
STAIRCASES

STAIRCASE: HOUSE IN HANOVER, NEW HAMPSHIRE
 DESIGNED BY E. H. AND M. K. HUNTER

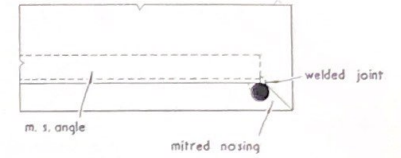
The hardwood treads are supported at the wall on metal angles concealed behind panelling, and at the outer end by painted rods which are continued through the ceiling to act as balusters on the landing above.



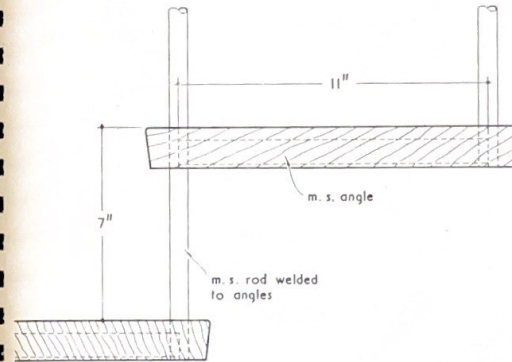
STAIRCASES



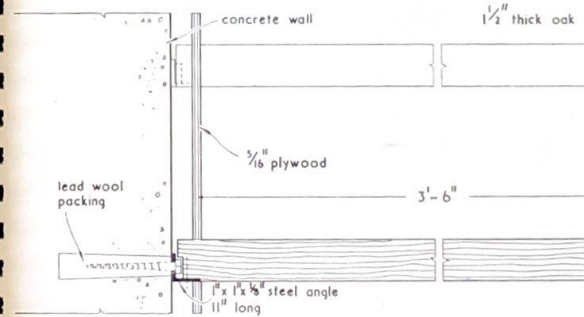
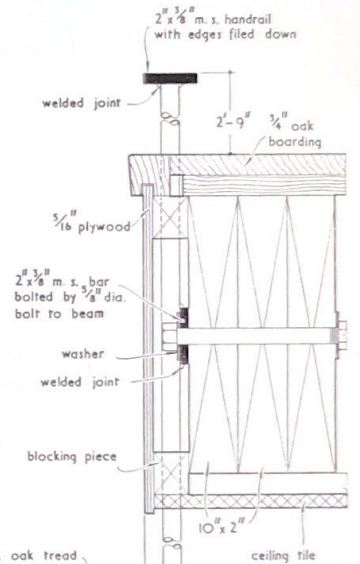
ELEVATION OF STAIR. scale $\frac{1}{4}'' = 1'-0''$



PART PLAN OF TREAD.



LONGITUDINAL SECTION THROUGH STAIR. scale $\frac{1}{4}$ full size



CROSS SECTION THROUGH STAIR AND HANDRAIL. scale $\frac{1}{4}$ full size