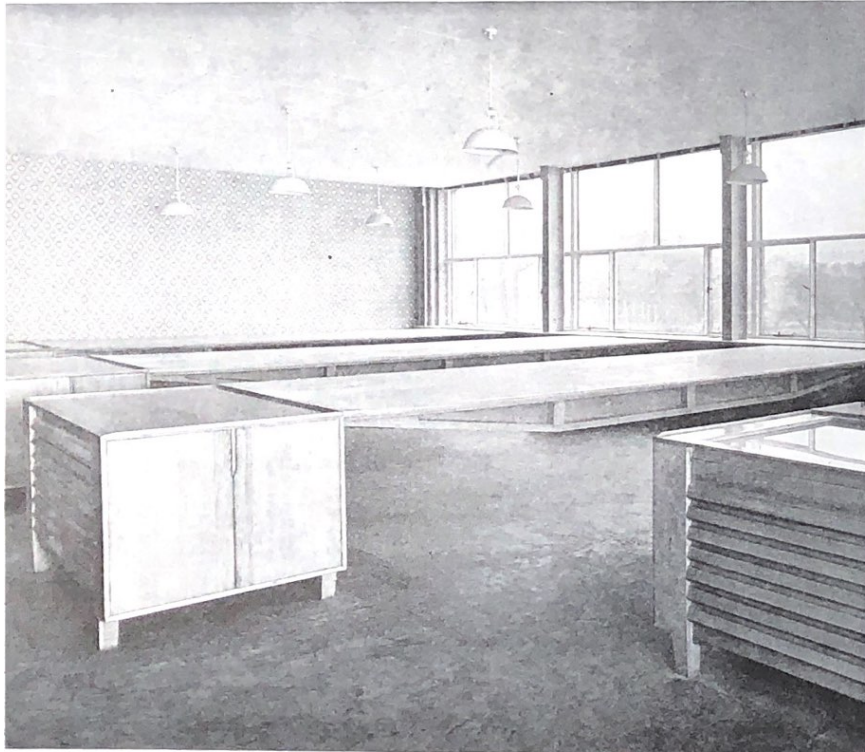


FURNITURE AND FITTINGS

DRAWING TABLES : DEPARTMENT OF CIVIC DESIGN, UNIVERSITY OF LIVERPOOL
 DESIGNED BY R. D. RUSSELL IN COLLABORATION WITH JOHN BROADBENT;
 GORDON STEPHENSON (architect for the University Building); NORMAN KINGHAM (assistant architect)

The long drawing tables, supported at their ends only, have been designed to carry a load of 70 lb./sq. ft.



FURNITURE AND FITTINGS

