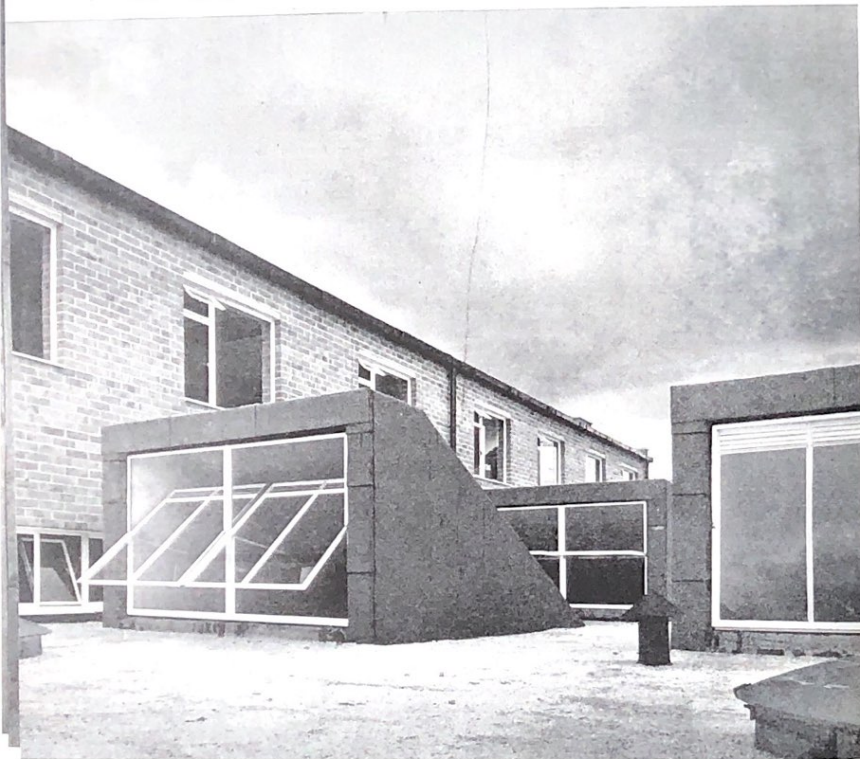


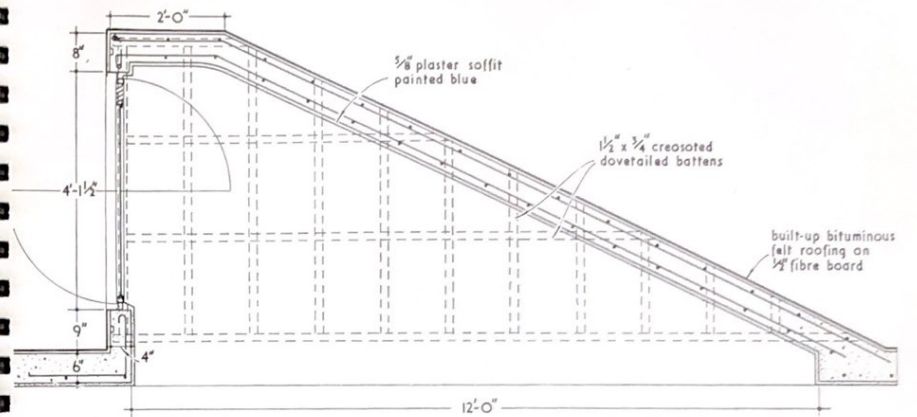
WINDOWS

ROOFLIGHT: WHOLESALE GROCERY DEPOT AT DORCHESTER  
 DESIGNED BY CECIL H. ELSOM AND R. NICHOLLS (architect and chief assistant);  
 S. H. AND D. E. WHITE (consulting engineers)

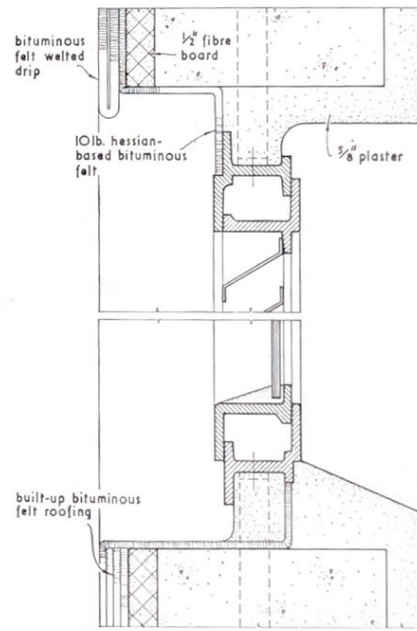
*The top and cheeks of the north light structure are cast in one with the roof slab.*



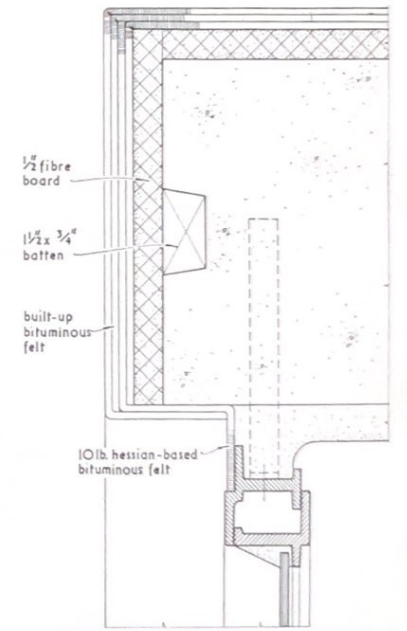
WINDOWS



LONGITUDINAL SECTION AND PART PLAN THRO' CHEEK. scale 1/2" = 1'-0"



DETAIL OF HEAD AND CURB. scale 1/2 full size



DETAIL OF CHEEK. scale 1/2 full size