

BALCONIES

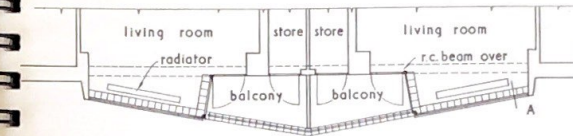
BALCONIES: FLATS IN LONDON, S.W.10

DESIGNED BY EDWARD ARMSTRONG AND FREDERICK MACMANUS; D. J. TRICKER (assistant-in-charge)

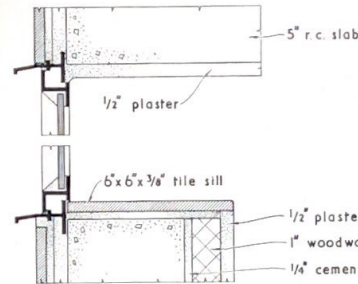
The facing to the balcony walls is of matt-glazed tiles with a waterproof pointing in the wide joints.



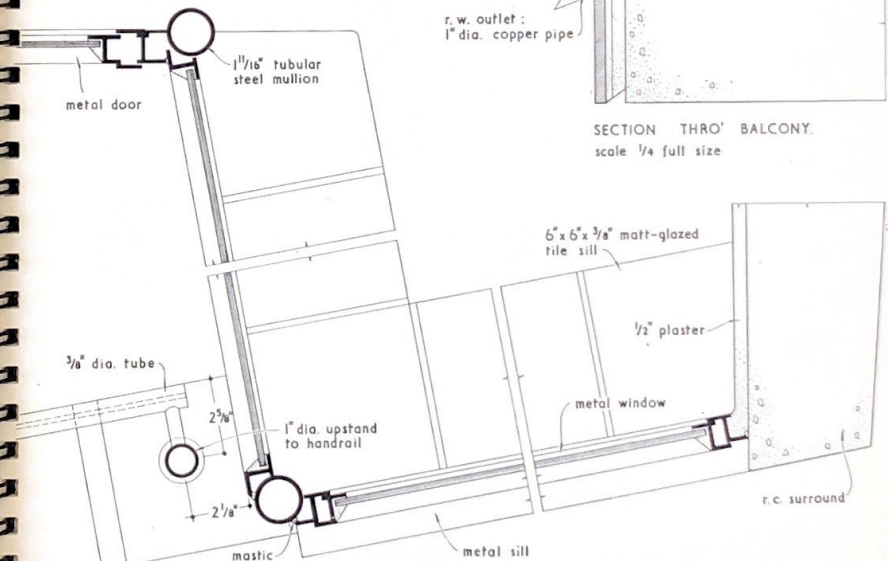
BALCONIES



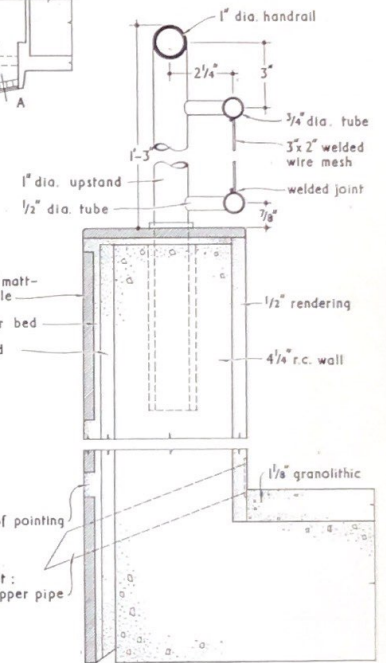
KEY PLAN. scale $\frac{1}{8}'' = 1'-0''$



SECTION THRO' WINDOW AT A. scale $\frac{1}{4}$ full size



PLAN OF WINDOW. scale $\frac{1}{4}$ full size



SECTION THRO' BALCONY. scale $\frac{1}{4}$ full size