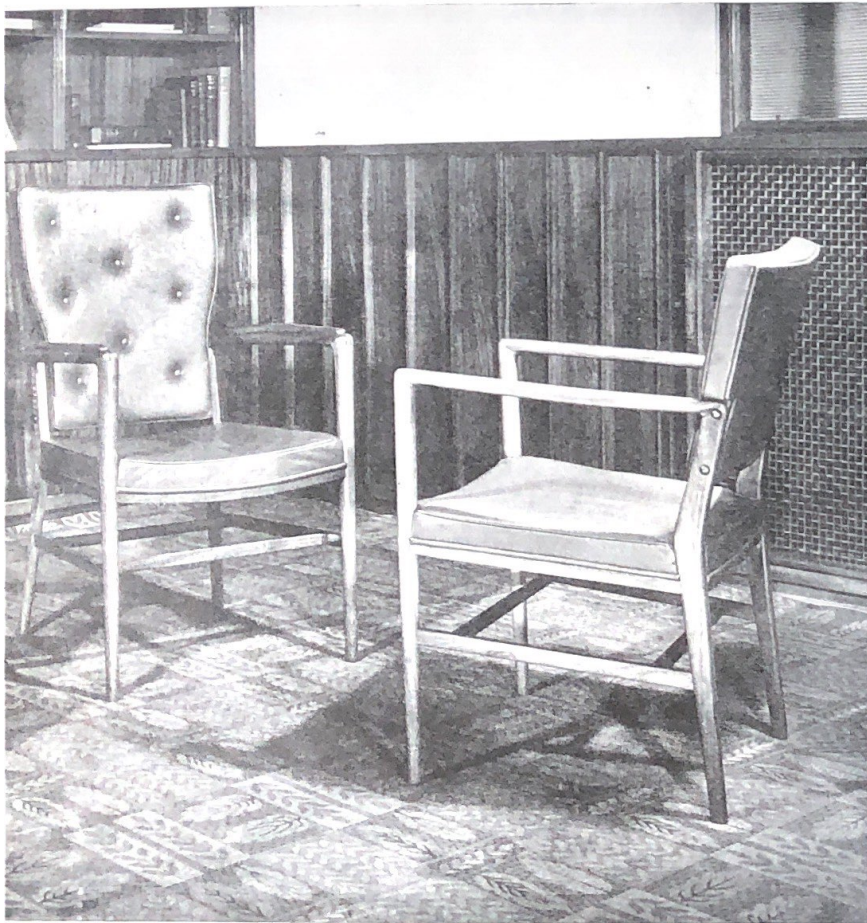


FURNITURE AND FITTINGS

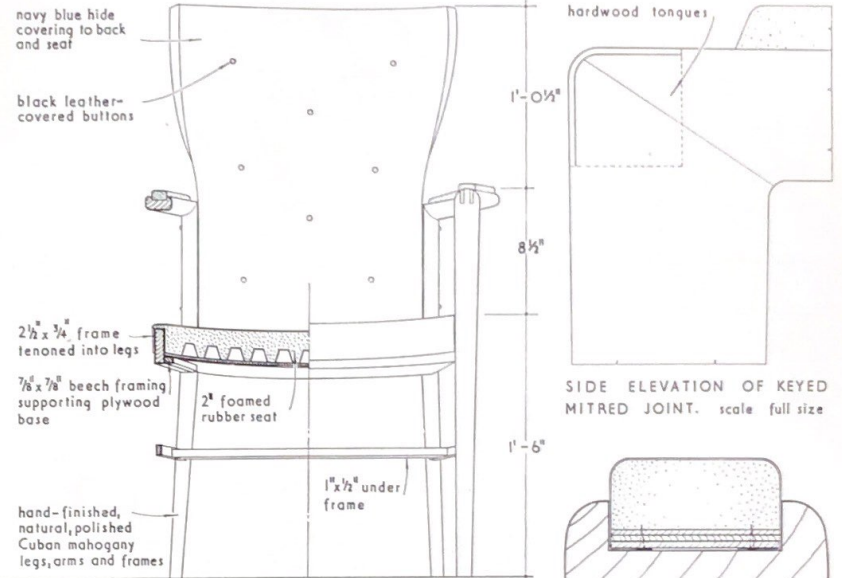
OFFICE CHAIRS: BANK IN LONDON E.C.3

DESIGNED BY WESTWOOD, SONS AND HARRISON; JAMES A. CRABTREE (assistant architect-in-charge)

The chairs are in mahogany and have backs and seats upholstered in foamed rubber covered with hide.

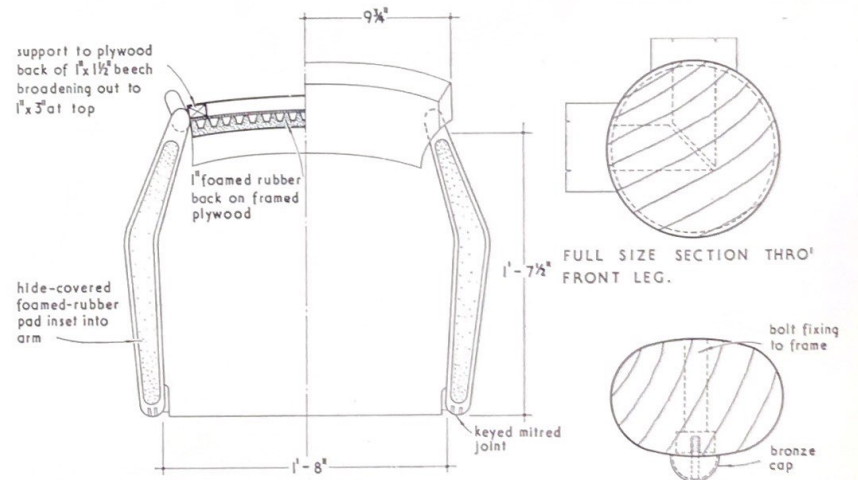


FURNITURE AND FITTINGS



PART SECTION AND FRONT ELEVATION OF CHAIR. scale $1\frac{1}{2}'' = 1'-0''$

FULL SIZE SECTION THRO' ARM.



PART SECTION AND PLAN OF CHAIR. scale $1\frac{1}{2}'' = 1'-0''$

FULL SIZE SECTION THRO' BACK LEG.