

STAIRCASES

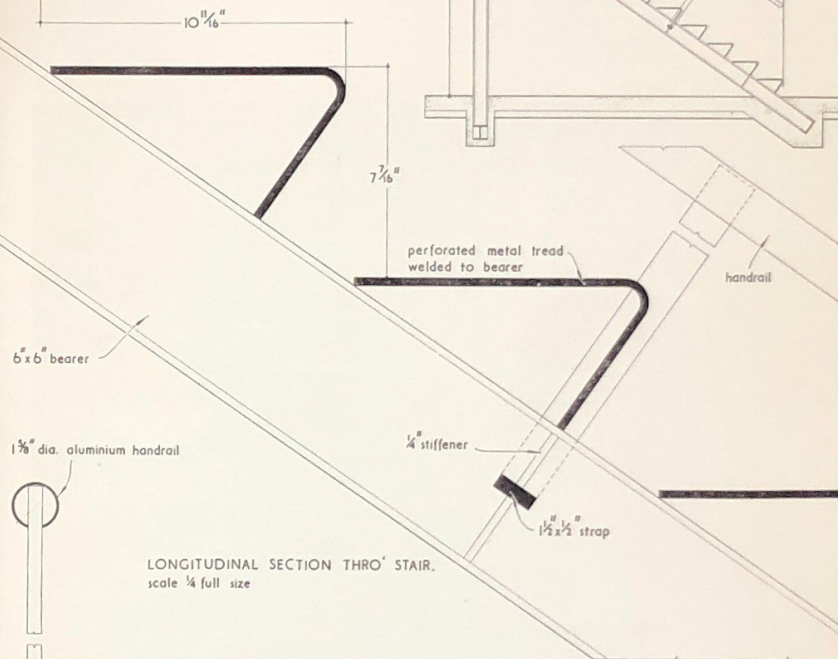
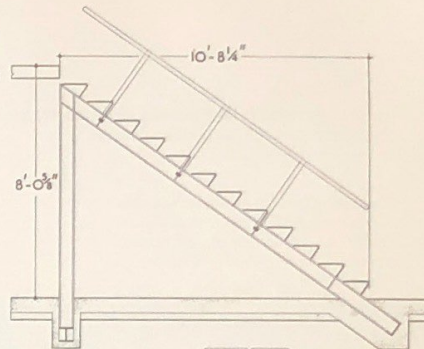
STAIRCASE: ARCHITECT'S OFFICE, LOS ANGELES
DESIGNED BY WILLIAM BECKETT

Each perforated metal stair is welded separately to the central carriage beam which, resting on a vertical support at the top end, enables the staircase to be completely free-standing.

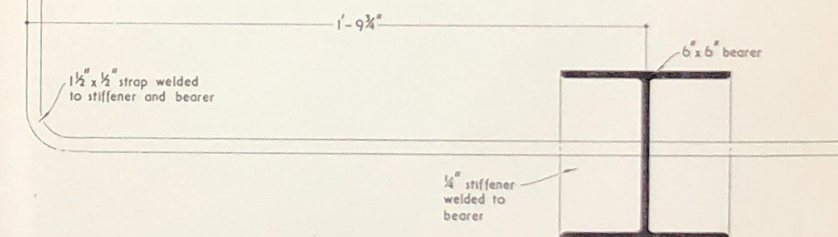


STAIRCASES

LONGITUDINAL SECTION THROUGH STAIRCASE.
scale $\frac{1}{4}'' = 1' - 0''$



LONGITUDINAL SECTION THRO' STAIR.
scale $\frac{1}{4}$ full size



CROSS SECTION THRO' HANDRAIL SHOWING CONNECTION TO BEARER
scale $\frac{1}{4}$ full size